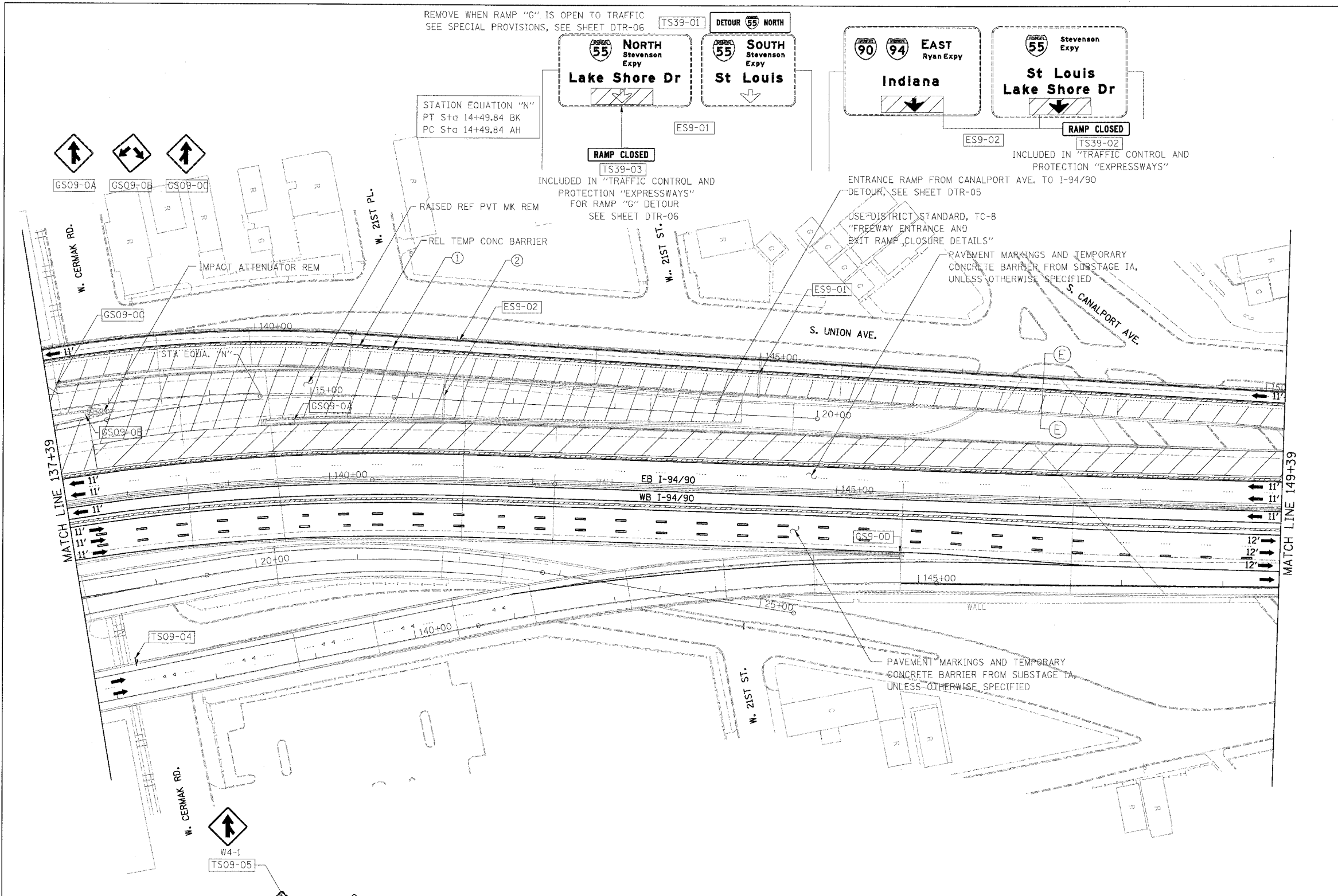


F.A.I.	SECTION	COUNTY	TOTAL SHEETS	SHEET NO.
94/90	2003-0291	COOK	344	69
STA.	TO STA.			
FED. ROAD DIST. NO.	ILLINOIS	FED. AID PROJECT		
62581				



- LEGEND**
- WORK ZONE
 - DIRECTION OF TRAFFIC
 - DRUM OR BARRICADE TYPE II WITH STEADY BURN LIGHT
 - IMPACT ATTENUATORS, TEMPORARY (NON-REDIRECTIVE), TEST LEVEL 3
 - BARRICADE TYPE III
 - TEMPORARY CONCRETE BARRIER
 - ① LINE 4" (YELLOW EDGE LINE)
 - ② LINE 4" (WHITE EDGE LINE)
 - ③ LINE 4" (SKIP DASH, 6' SKIP - 2' DASH, WHITE)
 - ④ LINE 5" (SKIP DASH, 30' SKIP - 10' DASH, WHITE)
 - ⑤ LINE 8" (WHITE LINE)
 - ⑥ LINE 8" (SKIP DASH, 12' SKIP - 3' DASH, WHITE)
 - ⑦ LINE 12" (DIAGONAL, 30' C-C)
 - ⑧ LINE 12" (DIAGONAL, 500' C-C)
 - ⑨ LETTERS AND SYMBOLS
 - EXISTING OVERHEAD OR CANTILEVER SIGNS
 - EXISTING POST MOUNTED SIGNS
 - TEMPORARY SIGNS

REMOVE WHEN RAMP "G" IS OPEN TO TRAFFIC
SEE SPECIAL PROVISIONS, SEE SHEET DTR-06

STATION EQUATION "N"
PT Sta 14+49.84 BK
PC Sta 14+49.84 AH

INCLUDED IN "TRAFFIC CONTROL AND PROTECTION "EXPRESSWAYS" FOR RAMP "G" DETOUR SEE SHEET DTR-06

ENTRANCE RAMP FROM CANALPORT AVE. TO I-94/90
DETOUR, SEE SHEET DTR-05

USE DISTRICT STANDARD, TC-8
"FREEWAY ENTRANCE AND EXIT RAMP CLOSURE DETAILS"

PAVEMENT MARKINGS AND TEMPORARY CONCRETE BARRIER FROM SUBSTAGE 1A, UNLESS OTHERWISE SPECIFIED

PAVEMENT MARKINGS AND TEMPORARY CONCRETE BARRIER FROM SUBSTAGE 1A, UNLESS OTHERWISE SPECIFIED

INCLUDED IN "TRAFFIC CONTROL AND PROTECTION "EXPRESSWAYS" FROM SUBSTAGE 1A

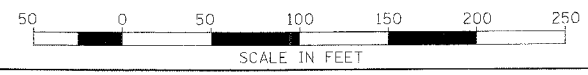
NOTE:
ALL PAVEMENT MARKINGS ON THIS SHEET WILL BE PAVEMENT MARKING TAPE, TYPE III, UNLESS OTHERWISE NOTED. MOT-39

REVISIONS	
NAME	DATE

ILLINOIS DEPARTMENT OF TRANSPORTATION
F.A.I. 94/90 (DAN RYAN EXPRESSWAY)
SB DAN RYAN ELEVATED BRIDGE
REPAIR FROM 15TH TO 28TH STREETS
MAINTENANCE OF TRAFFIC PLAN - SUBSTAGE 1C
STA. 137+39 TO STA. 149+39

SCALE: 1"=50'
DATE: 5/12/2006

DRAWN BY: RA
CHECKED BY: RS



BOWMAN, BARRETT & ASSOCIATES INC.
CONSULTING ENGINEERS
Chicago, Illinois
312.228.0100
www.bbainc.com