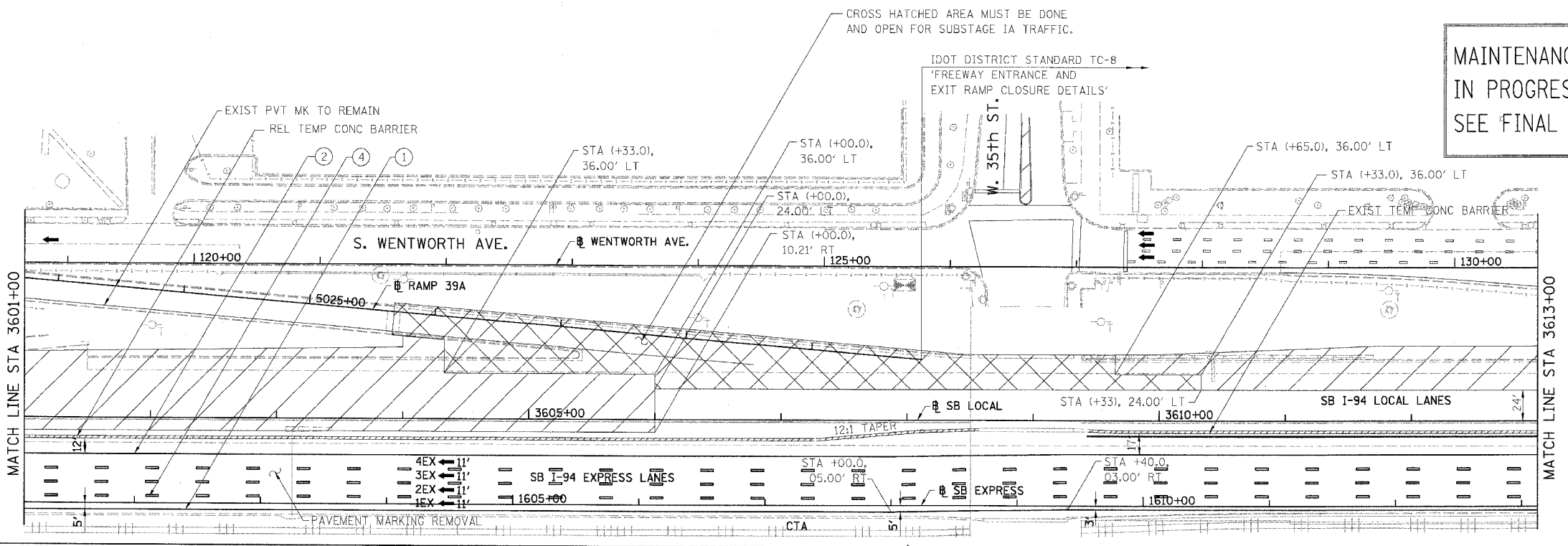


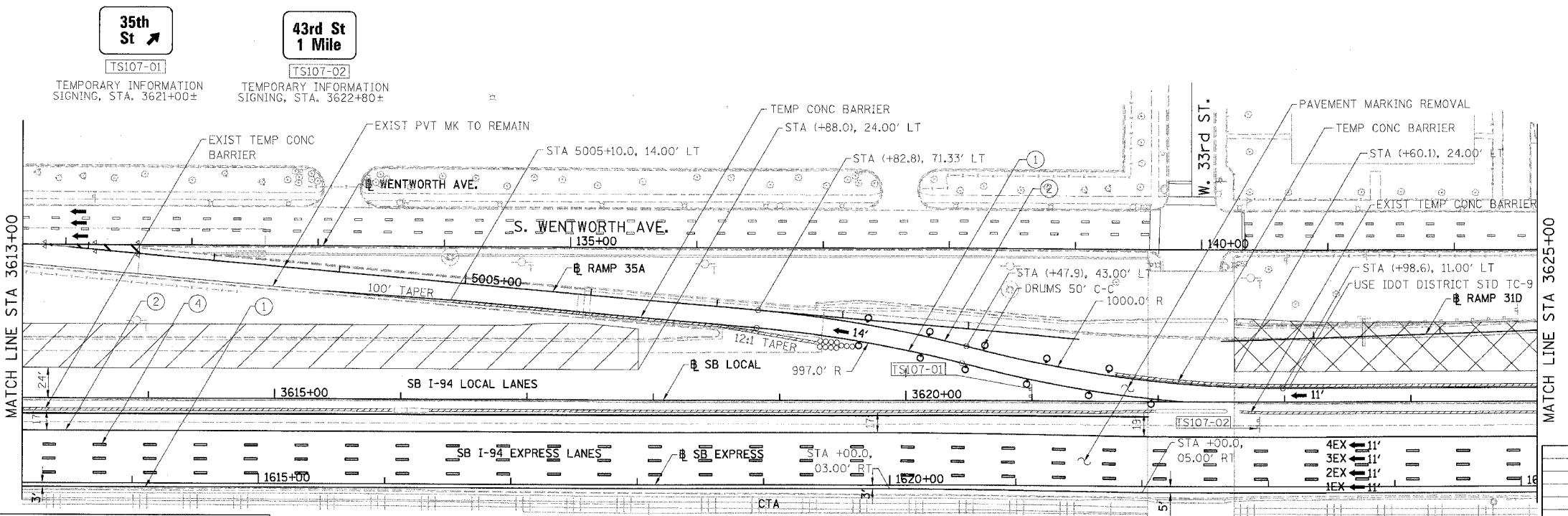
F.A.I.	SECTION	COUNTY	TOTAL SHEETS	SHEET NO.
94/90	*	COOK	344	103
STA.	TO STA.			
FED. ROAD DIST. NO.	ILLINOIS	FED. AID PROJECT		
62303	*(2021-922 PT2 ETC 2324.6-1P) R-11			



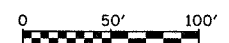
**MAINTENANCE OF TRAFFIC FOR CONTRACT 62303
IN PROGRESS. SHEET FOR REFERENCE ONLY.
SEE FINAL CONTRACT 62303 FOR FINAL INFORMATION.**



- LEGEND:**
- 1 → LANE NUMBER AND DIRECTION OF TRAFFIC
 - ▨ WORK AREA
 - ▨ TEMPORARY PAVEMENT
 - ⊘ IMPACT ATTENUATORS, TEMPORARY (NON-REDIRECTIVE), TEST LEVEL 3
 - ⊘ DRUM OR BARRICADE TYPE II WITH STEADY BURNING LIGHT
 - ⊘ BARRICADE TYPE III
 - ▨ TEMPORARY CONCRETE BARRIER
 - ① LINE 4" (YELLOW EDGE)
 - ② LINE 4" (WHITE EDGE)
 - ③ LINE 4" (SKIP DASH, 6' SKIP - 2' DASH, WHITE)
 - ④ LINE 5" (SKIP DASH, 30' SKIP - 10' DASH, WHITE)
 - ⑤ LINE 8" (WHITE GORE LINE)
 - ⑥ LINE 8" (SKIP DASH, 12' SKIP - 3' DASH, WHITE)
 - ⑦ LINE 12" (DIAGONAL, 30' C-C, WHITE)
 - ⑧ LETTERS AND SYMBOLS
 - ES-XXX-XX EXISTING OVERHEAD OR CANTILEVER SIGNS
 - GS-XXX-XX EXISTING POST MOUNTED SIGNS
 - TS-XXX-XX TEMPORARY SIGNS



+XX.XX STATION PROVIDED FROM THE ± SB I-90/94 EXPRESS LANES
(+XX.XX) STATION PROVIDED FROM THE ± SB I-90/94 LOCAL LANES



MOT-107

REVISIONS	NAME	DATE

ILLINOIS DEPARTMENT OF TRANSPORTATION
F.A.I. 94/90 (DAN RYAN EXPRESSWAY)
GARFIELD BLVD TO 31ST STREET (SB LOCAL LANES)
SUGGESTED STAGES OF CONSTRUCTION
AND TRAFFIC CONTROL
STAGE I

SCALE: 1"=50'
DATE: 5/12/2006

DRAWN BY: RA
CHECKED BY: RS

BOWMAN, BARRETT & ASSOCIATES INC
CONSULTING ENGINEERS
Chicago, Illinois
312.228.0100
www.bbainc.com

SB I-94/90 EXPRESS LANES TEMPORARY PAVEMENT MARKINGS INSTALLED IN STAGE I TO REMAIN TO END OF STAGE 3, UNLESS OTHERWISE SPECIFIED IN SUBSTAGE IA.

5/16/2006 2:56:49 PM