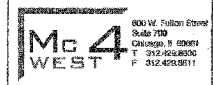
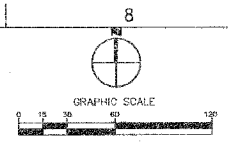
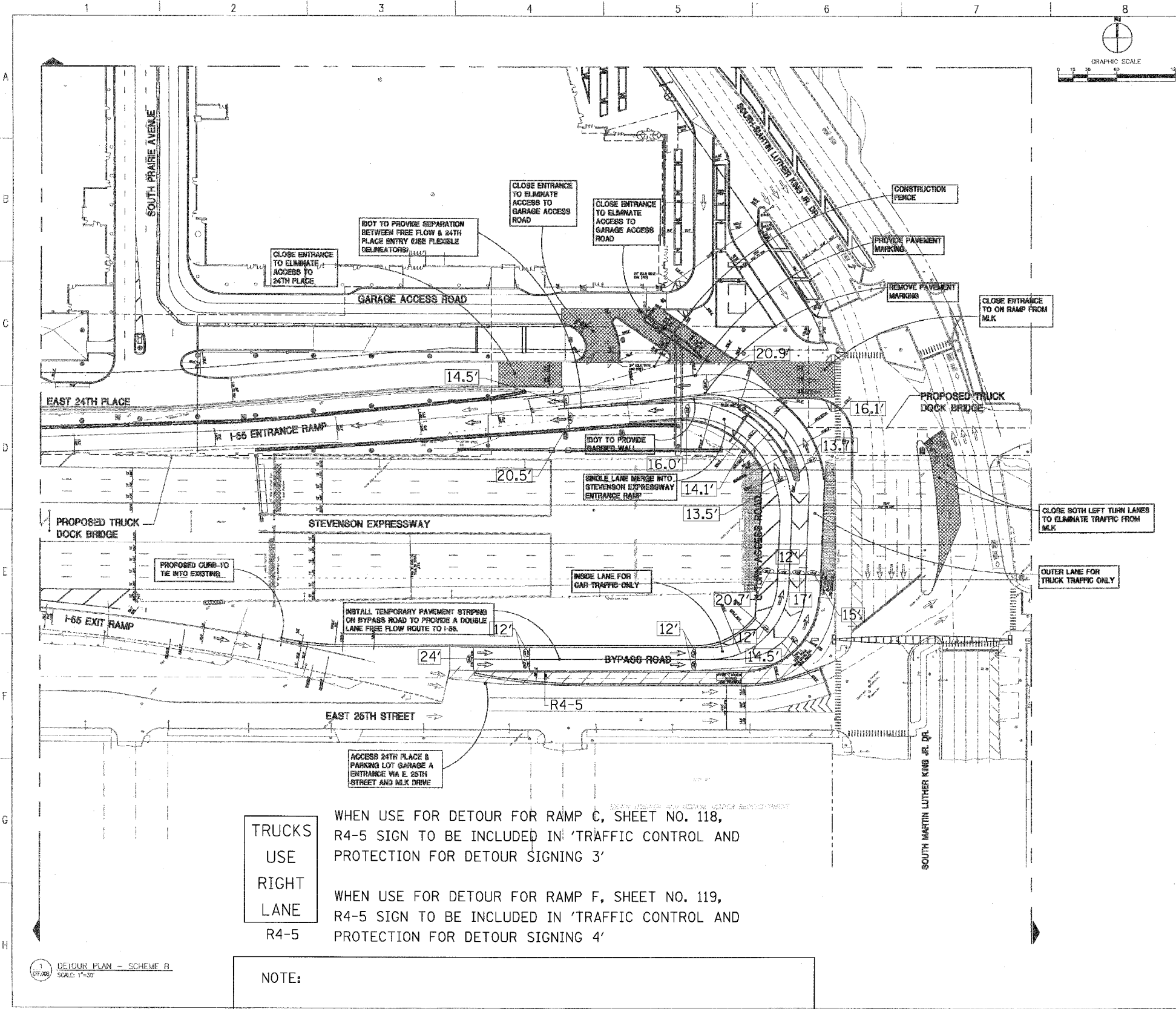
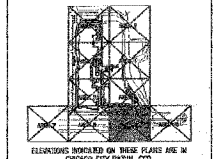


F.A.I.	SECTION	COUNTY	TOTAL SHEETS	SHEET NO.
94/90	2003-0291	COOK	344	122
STA.		TO STA.		
FED. ROAD DIST. NO.	ILLINOIS	FED. AID PROJECT		
62581				



**LEGEND**  
 -> NORMAL TRAFFIC FLOW IN IMPROVED CONDITIONS (NOT PROBABLY MARKING)  
 -> FREE-FLOW TRAFFIC FLOW (SEE NOTES) (SEE PARALLEL MARKING)



ELEVATIONS INDICATED ON THESE PLANS ARE IN CHICAGO CITY ENGINEEING FEET  
 1.00' = 30.48' NEAR THE NEW YORK

1	DATE	DESCRIPTION
2	DATE	DESCRIPTION
3	DATE	DESCRIPTION
4	DATE	DESCRIPTION



DETOUR PLAN  
TWO-LANE FREE FLOW

22026	
VI	VI
06-19-04	
SCALE: 1"=30'	

CFF.00B

**TRUCKS USE RIGHT LANE**  
 WHEN USE FOR DETOUR FOR RAMP C, SHEET NO. 118, R4-5 SIGN TO BE INCLUDED IN 'TRAFFIC CONTROL AND PROTECTION FOR DETOUR SIGNING 3'

**R4-5**  
 WHEN USE FOR DETOUR FOR RAMP F, SHEET NO. 119, R4-5 SIGN TO BE INCLUDED IN 'TRAFFIC CONTROL AND PROTECTION FOR DETOUR SIGNING 4'

**NOTE:**  
 TEMPORARY SIGNING WILL BE PREPARED TO COMMUNICATE ALTERNATE DETOUR ROUTES FOR TRAFFIC THAT IS TEMPORARILY PROHIBITED FROM ACCESSING E. 24TH PLACE AND I-55 (STEVENSON EXPRESSWAY)

FOR INFORMATION ONLY

BOWMAN, BARRETT & ASSOCIATES INC.  
 CONSULTING ENGINEERS  
 Chicago, Illinois  
 312.228.0100  
 www.bbainc.com

REVISIONS NAME	DATE

ILLINOIS DEPARTMENT OF TRANSPORTATION  
 F.A.I. 94/90 (DAN RYAN EXPRESSWAY)  
 SB DAN RYAN ELEVATED BRIDGE  
 REPAIR FROM 15TH TO 28TH STREETS  
 MCCORMICK PLACE WEST EXPANSION

SCALE: =NTS  
 DATE: 5/25/2006

DRAWN BY: RA  
 CHECKED BY: RS

MLK-01  
 5/24/2006