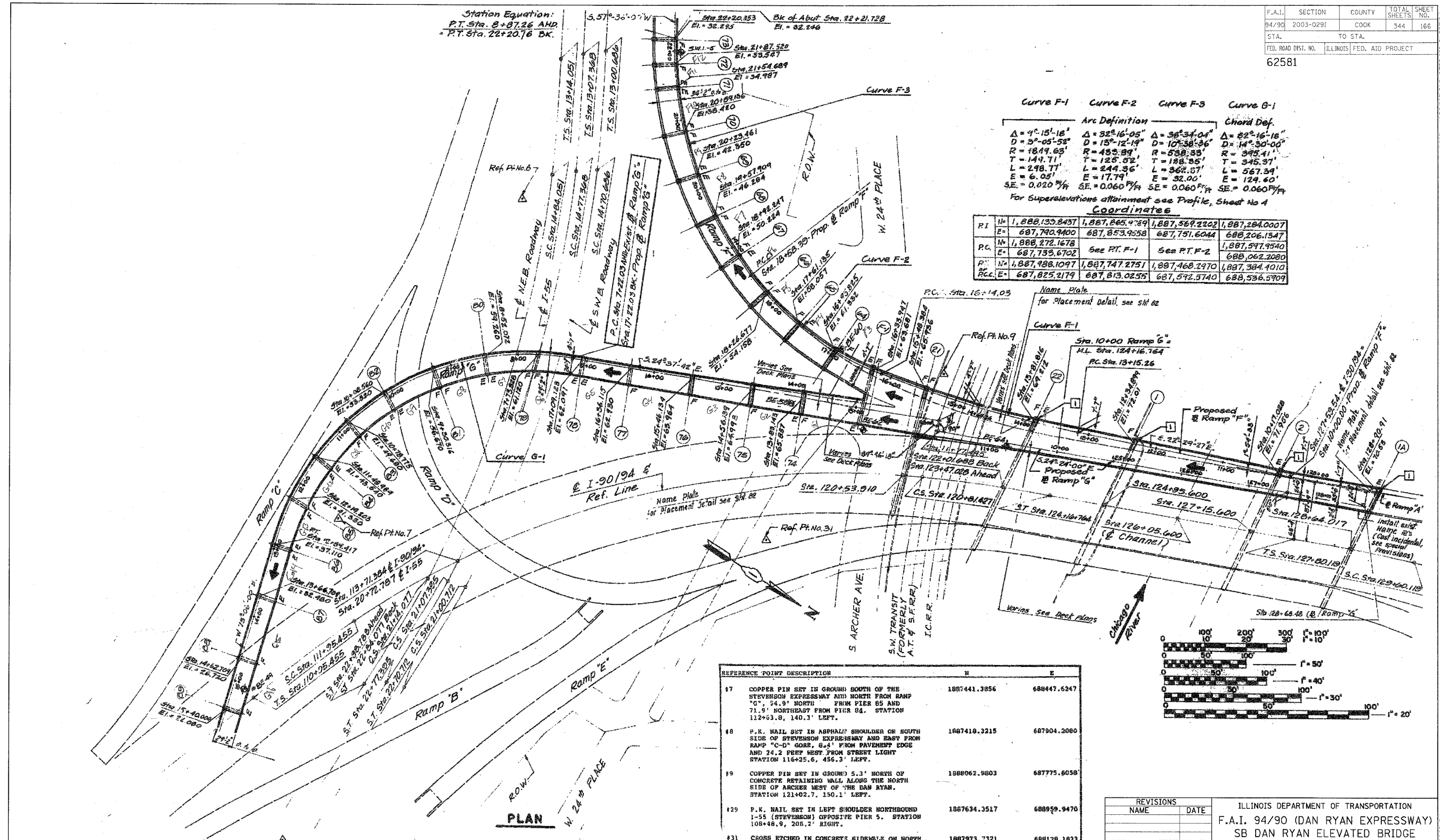


Station Equation:  
 P.T. Sta. 8+87.26 AHD  
 P.T. Sta. 22+20.76 BK.

Curve F-1	Curve F-2	Curve F-3	Curve G-1
Arc Definition			
$\Delta = 9^{\circ}15'18''$	$\Delta = 32^{\circ}16'05''$	$\Delta = 36^{\circ}34'04''$	$\Delta = 82^{\circ}16'18''$
$D = 3^{\circ}05'52''$	$D = 15^{\circ}12'14''$	$D = 10^{\circ}38'36''$	$D = 14^{\circ}30'00''$
$R = 1849.65'$	$R = 453.89'$	$R = 538.35'$	$R = 345.41'$
$T = 144.71'$	$T = 125.52'$	$T = 188.55'$	$T = 345.37'$
$L = 248.77'$	$L = 244.36'$	$L = 366.57'$	$L = 567.39'$
$E = 6.05'$	$E = 17.79'$	$E = 32.00'$	$E = 124.60'$
$SE = 0.020\%$	$SE = 0.060\%$	$SE = 0.060\%$	$SE = 0.060\%$
Chord Def.			
For Superelevations attainment see Profile, Sheet No 4			

Coordinates

RI	N	E	PC	N	E	PT	N	E
1	1,888,133.8457	1,887,865.4789	1	1,887,569.2202	1,887,284.0007			
	687,790.4400	687,853.9538		687,751.6044	688,206.1347			
PC	1,888,272.1678	See RT. F-1		See RT. F-2	1,887,597.9540			
	687,733.6702				688,062.2080			
PT	1,887,988.1097	1,887,747.2751		1,887,468.2970	1,887,384.4010			
PC	687,825.2179	687,813.0255		687,592.5740	688,536.5909			



REFERENCE POINT DESCRIPTION	N	E
17 COPPER PIN SET IN GROUND SOUTH OF THE STEVENSON EXPRESSWAY AND NORTH FROM RAMP "D", 34.9' NORTH FROM PIER 65 AND 71.9' NORTHEAST FROM PIER 64. STATION 112+63.8, 140.3' LEFT.	1887441.3856	688447.6247
18 P.K. NAIL SET IN ASPHALT SHOULDER ON SOUTH SIDE OF STEVENSON EXPRESSWAY AND EAST FROM RAMP "C-D" GORE, 8.4' FROM PAVEMENT EDGE AND 24.2 FEET WEST FROM STREET LIGHT STATION 116+25.6, 456.3' LEFT.	1887416.3215	687904.2080
19 COPPER PIN SET IN GROUND 5.3' NORTH OF CONCRETE RETAINING WALL ALONG THE NORTH SIDE OF ARCHER WEST OF THE DAN RYAN. STATION 121+02.7, 150.1' LEFT.	1988062.9803	687775.6058
129 P.K. NAIL SET IN LEFT SHOULDER NORTHBOUND I-55 (STEVENSON) OPPOSITE PIER 5. STATION 108+48.9, 205.2' RIGHT.	1887634.3517	688959.9470
131 CROSS ETCHED IN CONCRETE SIDEWALK ON NORTH SIDE OF 24TH PLACE ABOUT 126' WEST FROM WALLACE, 7' SOUTH FROM FENCE GATE. STATION 118+34.8, 91.3' RIGHT.	1887973.7321	688129.1823

REVISIONS	
NAME	DATE

ILLINOIS DEPARTMENT OF TRANSPORTATION  
 F.A.I. 94/90 (DAN RYAN EXPRESSWAY)  
 SB DAN RYAN ELEVATED BRIDGE  
 REPAIR FROM 15TH TO 28TH STREETS  
 GENERAL PLAN  
 SN 016-1050, 1062 & 1066  
 SCALE: NTS  
 DATE: 5/25/2006  
 DRAWN BY: MTR  
 CHECKED BY: BLU

BOWMAN, BARRETT & ASSOCIATES INC.  
 CONSULTING ENGINEERS  
 Chicago, Illinois  
 312.228.0100  
 www.bbandainc.com