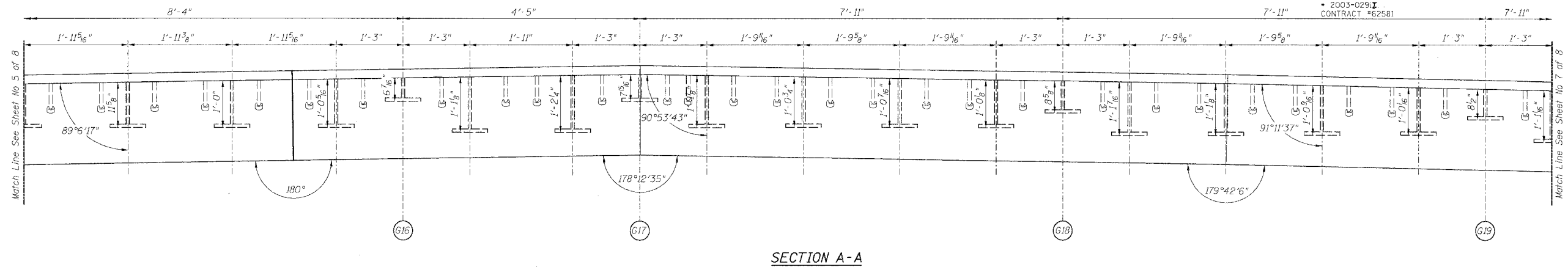


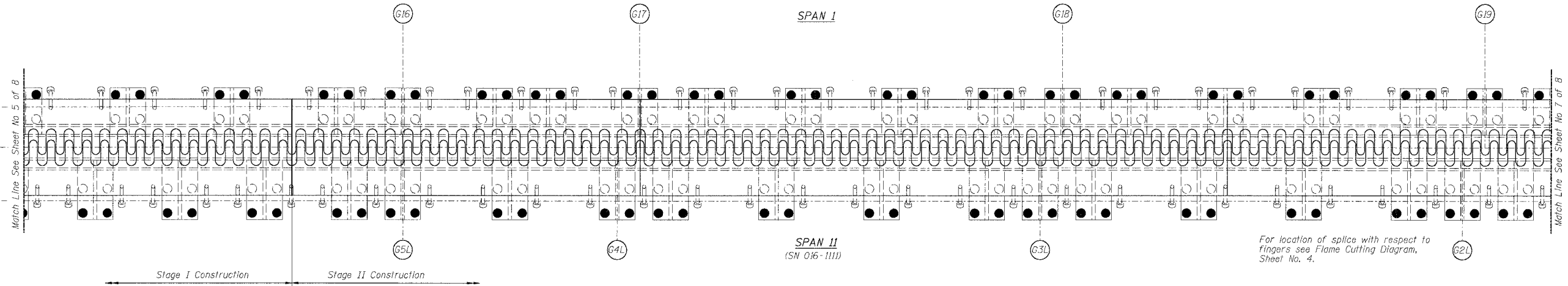
STATE OF ILLINOIS
DEPARTMENT OF TRANSPORTATION

ROUTE NO.	SECTION	COUNTY	TOTAL SHEETS	SHEET NO.
90/94	*	COOK	344	225
FED. ROAD DIST. NO.	ILLINOIS PROJECT			
2003-029 I				
CONTRACT #62581				

Sheet No 6
of 8 Sheets

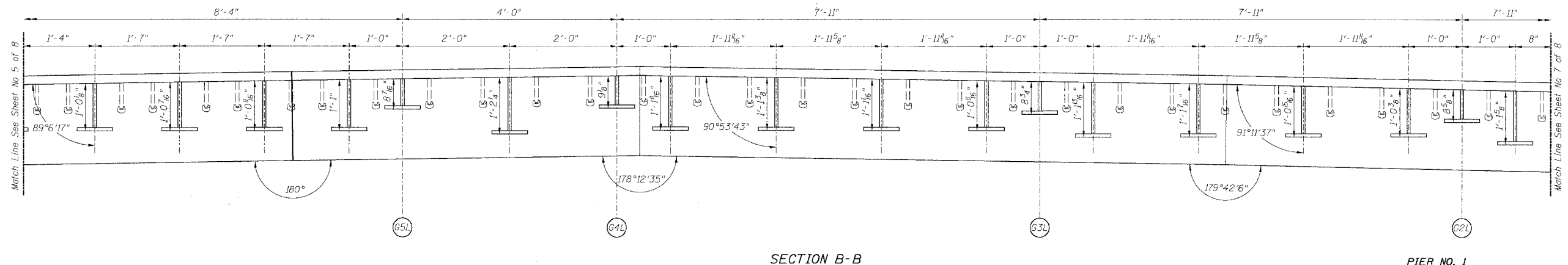


SECTION A-A



SPAN II
(SN 016-1111)

PLAN OF FINGER PLATE AT PIER 1 (SOUTHBOUND)



SECTION B-B

PIER NO. 1

REVISIONS			STATE OF ILLINOIS DEPARTMENT OF TRANSPORTATION DIVISION OF HIGHWAYS		DRAWN BY DATE
1					RLK 5/03
2					SDS 5/03
3					BOOK NUMBER
4					PROJECT NO.
5					4222-3
6					SHEET NO.
7					
8					
9					
10					

Note:
For optional splice detail see
flame cutting diagram on Sheet No. 4

HOMER L. CHASTAIN & ASSOCIATES CONSULTING ENGINEERS
8600 W. BROWN MAJOR AVENUE, SUITE 204, CHICAGO, ILLINOIS 60631, TEL: 773-714-0550, FAX: 773-714-0018