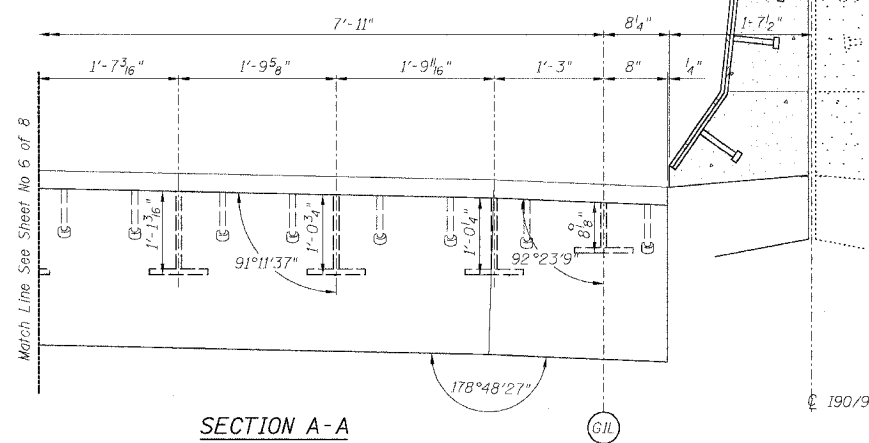


STATE OF ILLINOIS  
DEPARTMENT OF TRANSPORTATION

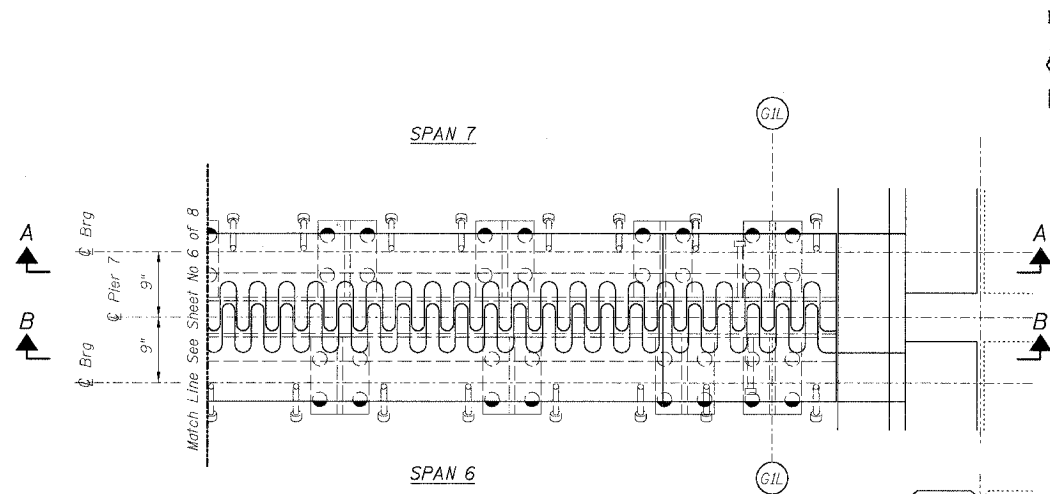
ROUTE NO.	SECTION	COUNTY	TOTAL SHEETS	SHEET NO.
FAI 90/94	*	COOK	344	234
FED. ROAD DIST. NO.	ILLINOIS	PROJECT		

Sheet No 7  
of 8 Sheets

2003-029-I  
CONTRACT #62581

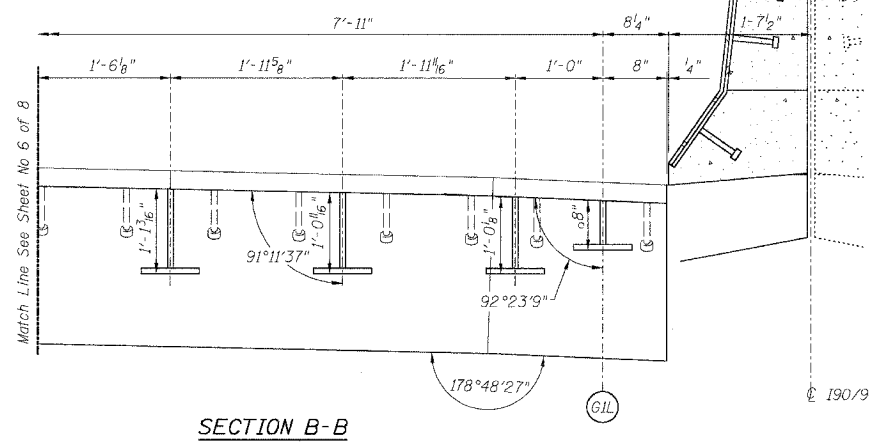


SECTION A-A



SPAN 7

PLAN OF FINGER PLATE AT PIER 7 (SOUTHBOUND)



SECTION B-B

For location of splice with respect to fingers see Flame Cutting Diagram, Sheet No. 4.

Note:  
For optional splice detail see flame cutting diagram on Sheet No. 4

PIER NO. 7

REVISIONS		STATE OF ILLINOIS DEPARTMENT OF TRANSPORTATION DIVISION OF HIGHWAYS		DRAWN BY DATE
1				RLK 5/03
2				CHECKED BY DATE
3				SDS 5/03
4				BOOK NUMBER
5				
6				
7				
8				
9				
0				

FAI RTE 90/94 SB	DAN RYAN EXPRESSWAY	PROJECT No.
SN 016-1111 (SOUTHBOUND)		4222-3
SEC 2003-029-I	COOK COUNTY	SHEET No.

<b>HOMER L. CHASTAIN &amp; ASSOCIATES</b> CONSULTING ENGINEERS	8809 W. BRYN MAWR AVENUE SUITE 204 CHICAGO, ILLINOIS 60618 312-716-0000 FAX 312-716-0005
-------------------------------------------------------------------	------------------------------------------------------------------------------------------------------