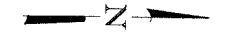


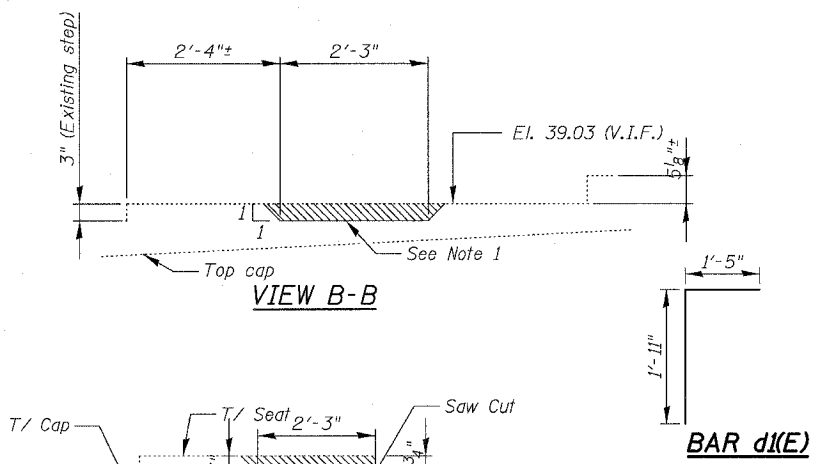
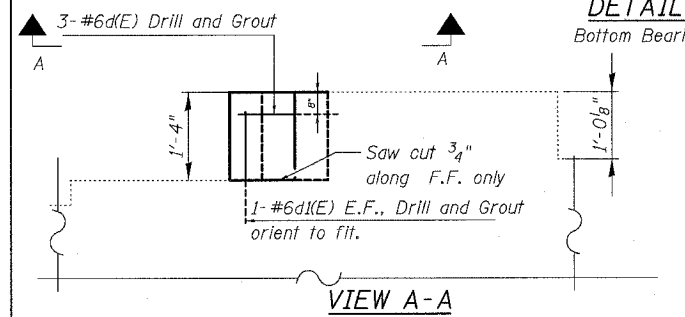
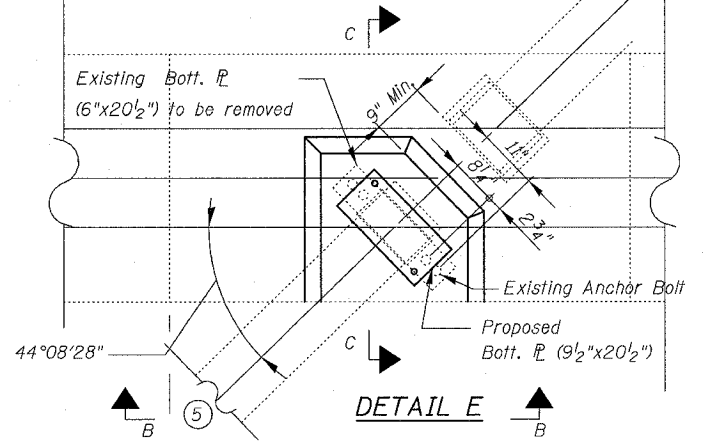
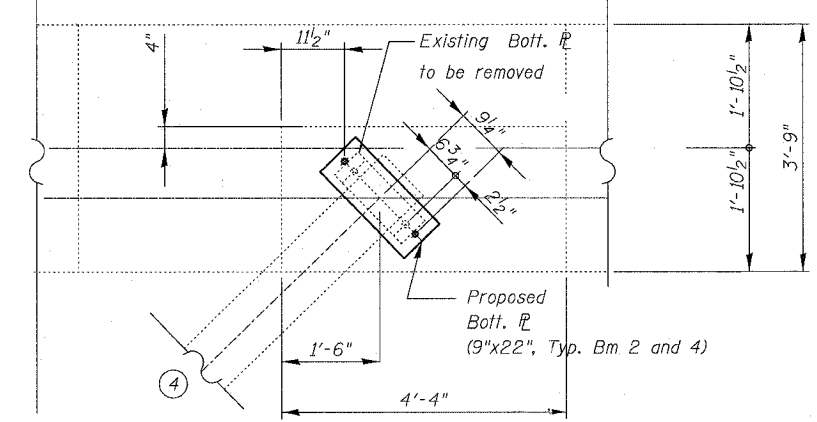
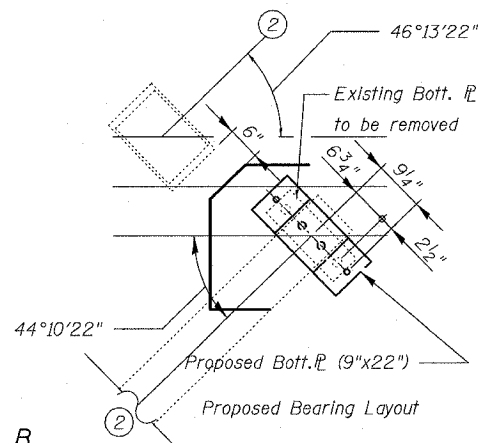
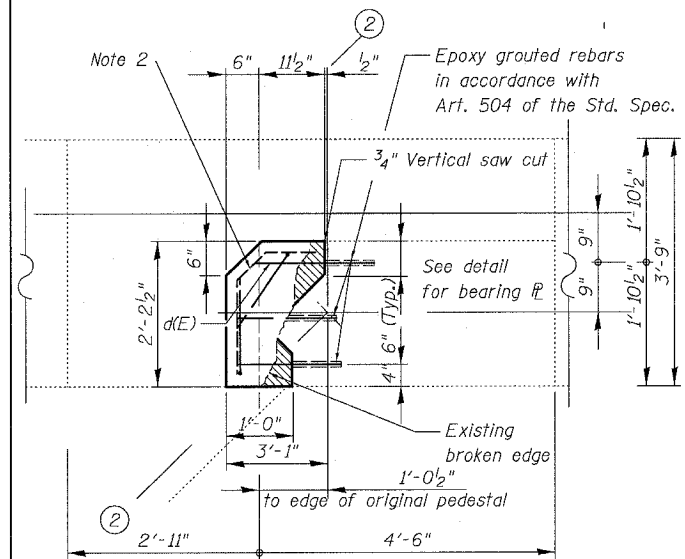
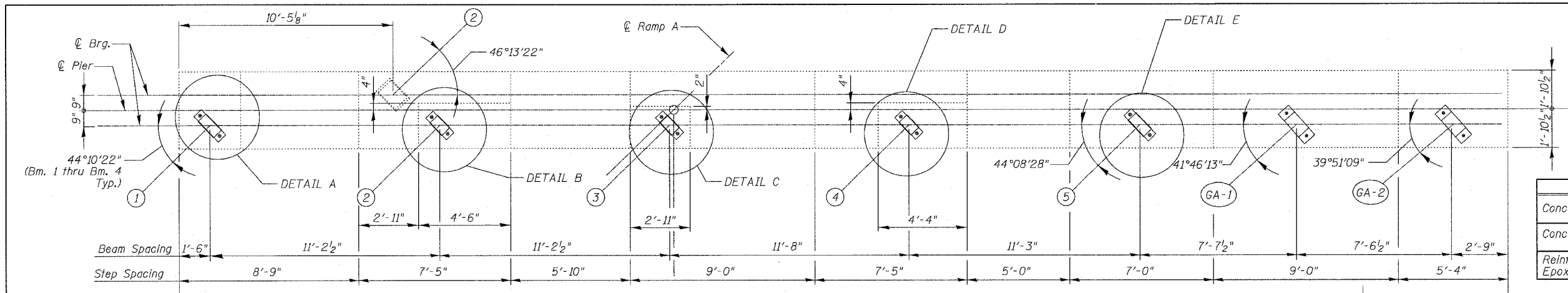
F.A.I.	SECTION	COUNTY	TOTAL SHEETS	SHEET NO.
94/90	2003-029I	COOK	344	275
STA.	TO STA.			
FED. ROAD DIST. NO.	ILLINOIS	FED. AID PROJECT		

62581



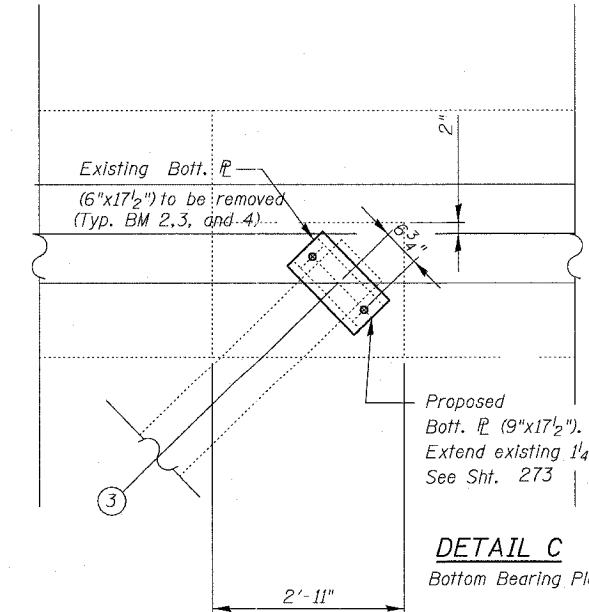
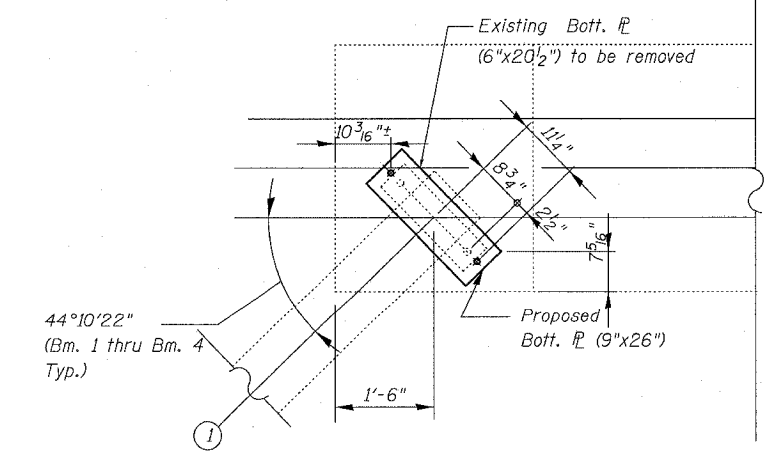
BILL OF MATERIAL

Item	Unit	Total
Concrete Removal	Cu. Yd.	0.1
Concrete Superstructure	Cu. Yd.	0.2
Reinforcement Bars, Epoxy Coated.	Pound	20



NOTE 1:
Remove 3" of existing seat concrete as shown. Saw cut front face. Remove concrete to within 1/2"± of that indicated and finish remaining removal by grinding to obtain a level bearing surface.

NOTE 2:
Provide 6x6-W4.0xW4.0 W.W.F. along side and top faces with 2" cover bend and form to concrete shape as required.



BILL OF BARS

BAR	NO.	SIZE	LENGTH	SHAPE
d(E)	3	#6	1'-10"	—
d(E)	2	#6	3'-4"	┌

REVISIONS	
NAME	DATE

ILLINOIS DEPARTMENT OF TRANSPORTATION
F.A.I. 94/90 (DAN RYAN EXPRESSWAY)
SB DAN RYAN ELEVATED BRIDGE
PIER A13, SN 016-1067
BEARING AND PEDESTAL DETAILS

SCALE: NTS
DATE: 5/25/2006

DRAWN BY: BOC
CHECKED BY: IYL

BOWMAN, BARRETT & ASSOCIATES INC.
CONSULTING ENGINEERS
Chicago, Illinois
312.228.0100
www.bbainc.com

45185 PM 5/25/2006