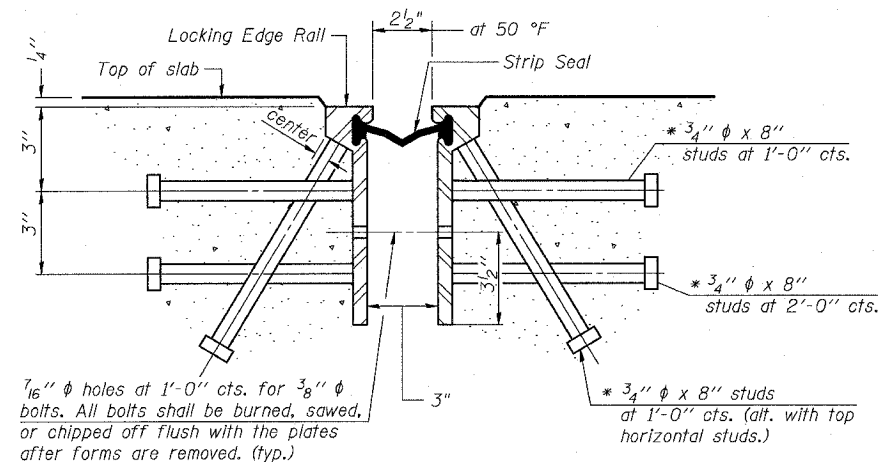
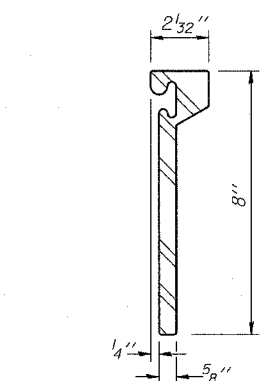


| | | | | |
|---------------------|-----------|------------------|--------------|-----------|
| F.A.I. | SECTION | COUNTY | TOTAL SHEETS | SHEET NO. |
| 94/90 | 2003-0291 | COOK | 344 | 285 |
| STA. | | TO STA. | | |
| FED. ROAD DIST. NO. | ILLINOIS | FED. AID PROJECT | | |

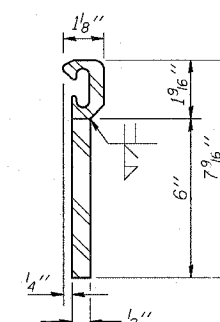
62581



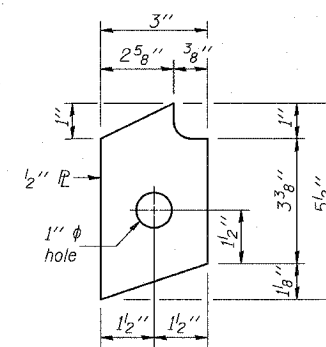
SECTION THRU ROLLED RAIL EXP. JOINT
(17,810*** Studs Required)



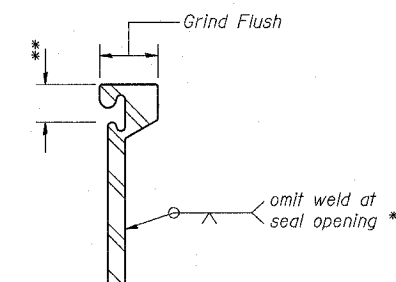
ROLLED (EXTRUDED) RAIL



WELDED RAIL



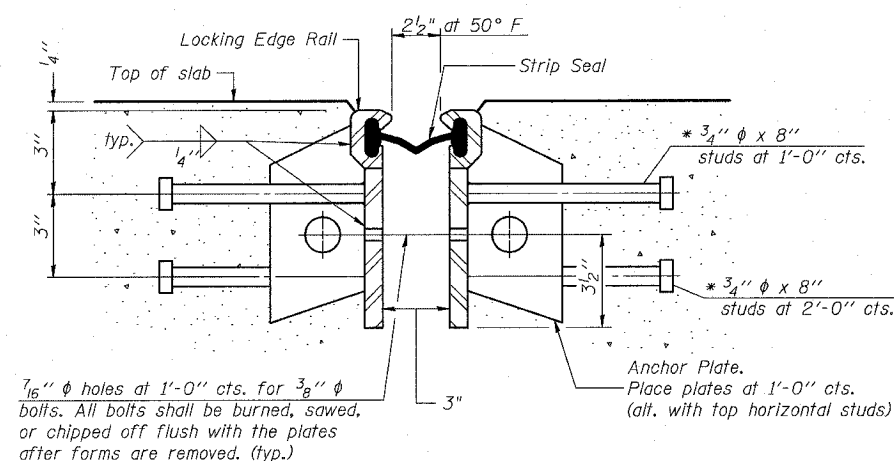
ANCHOR PLATE
(for welded rail)



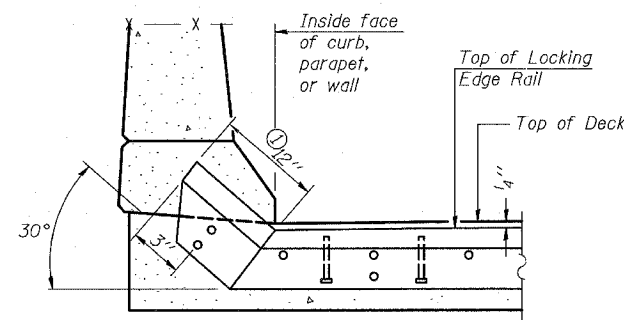
LOCKING EDGE RAIL SPLICE

The inside of the locking edge rail groove shall be free of weld residue.

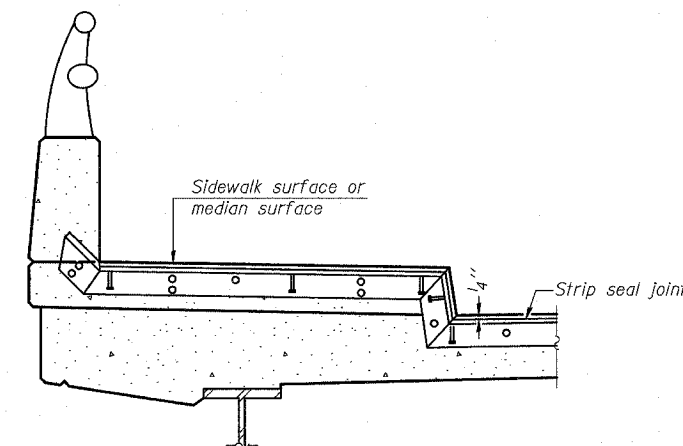
EXPANSION JOINT LOCKING EDGE RAIL DETAILS



SECTION THRU WELDED RAIL EXP. JOINT
(10,900*** Studs Required)
(7,120*** Anchor Plates Required)



AT CURB, PARAPET, OR WALL
① 6" at sidewalk parapet.



AT SIDEWALK OR MEDIAN*
* Shorter plates with a single row of studs at 12" centers may be necessary on medians which are shallower than 9". See manufacturer's recommendation.

TYPICAL END TREATMENTS

GENERAL NOTES

The strip seal shall be made continuous and shall have a minimum thickness of 1/4". The configuration of the strip seal shall match the configuration of the Locking Edge Rails. The height and thickness of the Locking Edge Rails shown are minimum dimensions. The actual configuration of the Locking Edge Rails and matching strip seal may vary from manufacturer to manufacturer. Flanged edge rails will not be allowed. Locking Edge Rails may be spliced at slope discontinuities and stage construction joints. The manufacturer's recommended installation methods shall be followed.

***Number provided is a total for this sheet only (depending on option) and is provided for estimating purposes only. Contractor shall verify based on field verification of joint lengths.

BOWMAN, BARRETT & ASSOCIATES INC.
CONSULTING ENGINEERS
Chicago, Illinois
312.228.0100
www.bbainc.com

* Granular or solid flux filled headed studs conforming to Article 1006.32 of the Std. Specs., automatically end welded.

| REVISIONS | |
|-----------|------|
| NAME | DATE |
| | |
| | |
| | |
| | |
| | |

ILLINOIS DEPARTMENT OF TRANSPORTATION
F.A.I. 94/90 (DAN RYAN EXPRESSWAY)
SB DAN RYAN ELEVATED BRIDGE
REPAIR FROM 15TH TO 28TH STREETS
STRIP SEAL EXPANSION JOINT
ASSEMBLY DETAILS
SCALE: NTS
DATE: 5/25/2006
DRAWN BY: BDC
CHECKED BY: BLU

R:\600\CONTRACTS\21\SHEETS\62581.DWG

5/25/2006 7:43:52 PM