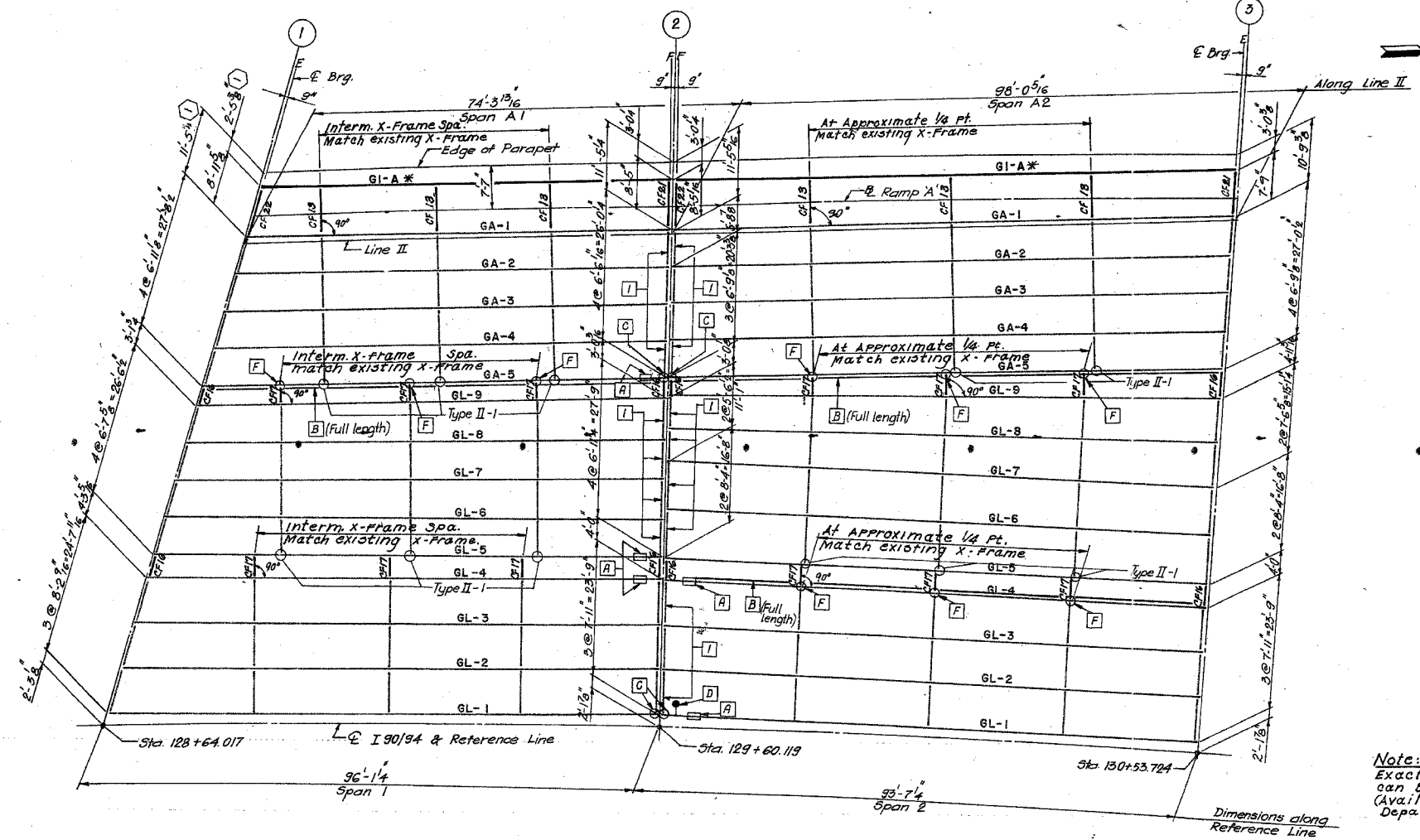


FEDERAL AID ROUTE NO.	SECTION	COUNTY	TOTAL SHEETS	SHEET NO.
90/94	*	COOK	67	15
STA.		TO STA.		
FED. NO. DIST. NO.		ILLINOIS FED. AID PROJECT		
* 1985-082 R				



Note:
Exact location of existing X-Frame can be obtained from Shop Drawings. (Available from State Of Illinois, Department Of Transportation.)

PLAN- SPANS 1 & 2 (S.B.)

Legend:
* New R Girder (For size and length see sheet E22)

TYPE II - Detail Number
Retrofit
Cross Frame at bottom Flange
See Sht. E 26

- (1) End X-Frame, Type 2. See Sht SR-3, Vol. #13 for detail.
- (A) For Repair, Girder Web near Bearing Stiffener. See Sht. SR-5, Vol. #13 for detail.
- (C) For Repair, Web Plate at end of Girder. See Sht. SR-5, Vol. #13 for detail.
- (F) Special Cross Frame Connection at longitudinal Reinforcing. See Sht. SR-6, Vol. #13 for detail.
- (D) For Repair, End Bearing Stiffener (side(s) indicated). See Sht. SR-5, Vol. #13 for detail.
- (B) Longitudinal Reinforcing Repair (side indicated). See Sht. SR-5, Vol. #13 for detail.

ALL NEW MATERIALS SHOWN ON THIS SHEET ARE FURNISHED UNDER A SEPARATE STEEL FABRICATION CONTRACT (SECTION 1985-081F), UNLESS NOTED OTHERWISE.

SHEET E15 OF 67

REVISIONS	
Name	Date
(1) Revision	1-8-88

STATE OF ILLINOIS
DEPARTMENT OF TRANSPORTATION
F.A.I. ROUTE 90/94 (DAN RYAN EXPRESSWAY)
SECTION 1985-082 R-COOK COUNTY
S.B. MAINLINE RECONSTRUCTION
STRUCTURE 016-113 (RAMP A & MAINLINE)
FRAMING PLAN SPANS 1 & 2, A1 & A2

Scale: NONE
Date: AUG. 14, 1987
Drawn By: R.G.
Checked By: M.M.

ENVIRODYNE ENGINEERS INC.
Chicago, Illinois

AS REVISED

BOWMAN, BARRETT & ASSOCIATES INC.
CONSULTING ENGINEERS
Chicago, Illinois
312.228.0100
www.bbendainc.com

FOR INFORMATION ONLY

REVISIONS NAME	DATE

ILLINOIS DEPARTMENT OF TRANSPORTATION
F.A.I. 94/90 (DAN RYAN EXPRESSWAY)
SB DAN RYAN ELEVATED BRIDGE
REPAIR FROM 15TH TO 28TH STREETS
EXISTING PLAN INFORMATION
SN 016-1113

SCALE: NTS
DATE: 5/25/2006
DRAWN BY: MTR
CHECKED BY: BLU

4-33334 PM 5/23/2006