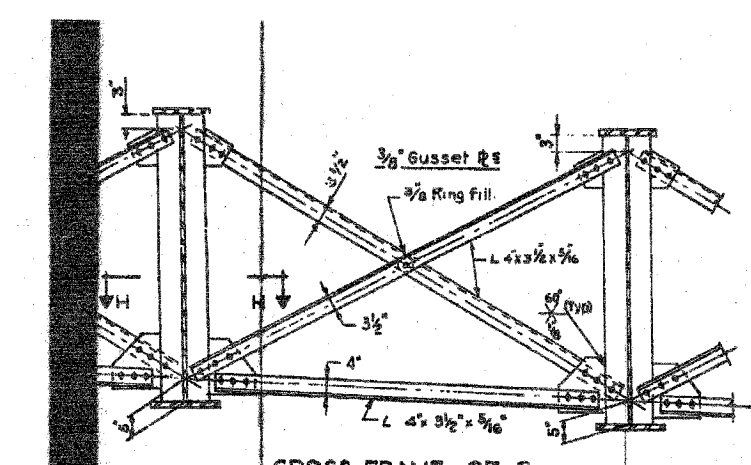
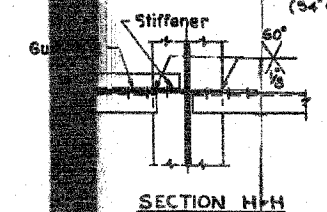


F.A.I.	SECTION	COUNTY	TOTAL SHEETS	SHEET NO.
94/90	2003-0291	COOK	344	312
PROJECT NO.	DATE	DESIGNED BY	CHECKED BY	SCALE
F.A.I. 84	5/25/06	J.H.D.	R.L.F.	NONE
DESIGNED BY	CHECKED BY	DATE	SCALE	
J.H.D.	R.L.F.	5/25/06	NONE	

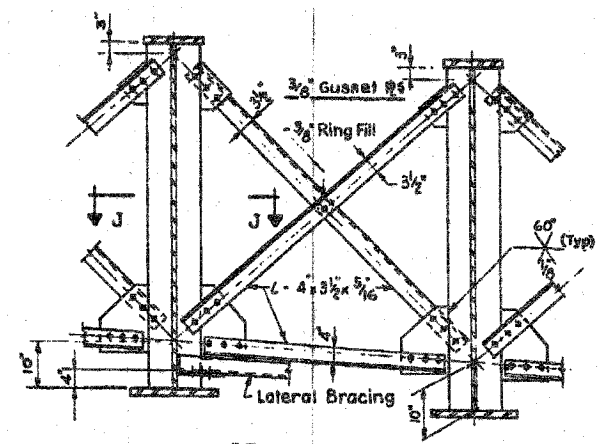


**CROSS FRAME CF-6**  
(54" OR 60" WEB GIRDERS)

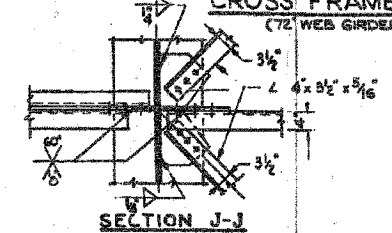


SECTION H-H

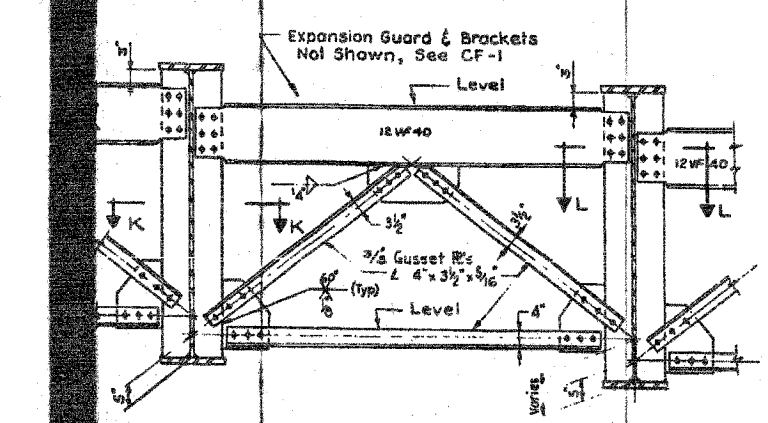
**INTERMEDIATE CROSS FRAMES**  
(SQUARE OR SLIGHTLY SKEWED CONNECTIONS)



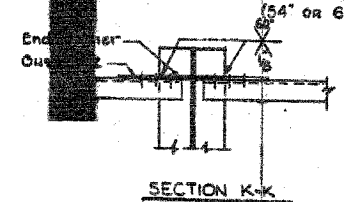
**CROSS FRAME CF-8**  
(72" WEB GIRDERS)



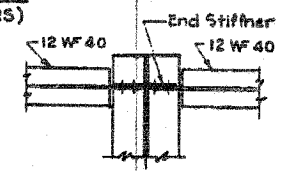
SECTION J-J



**CROSS FRAME CF-7**  
(54" OR 60" WEB GIRDERS)

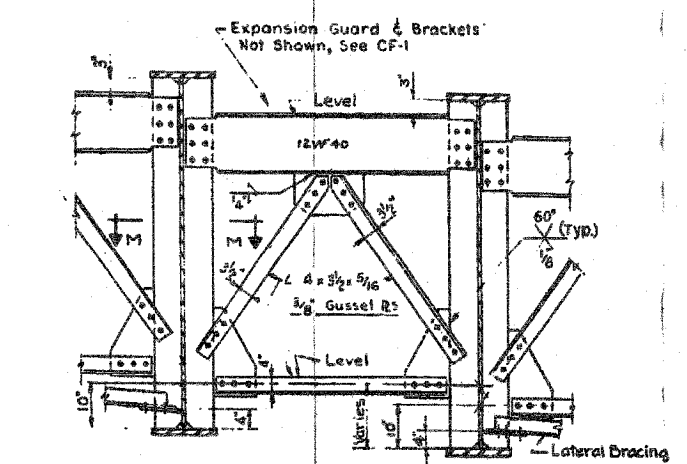


SECTION K-K

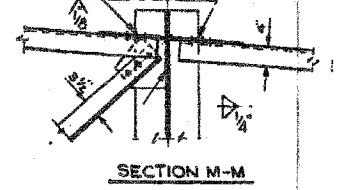


SECTION L-L

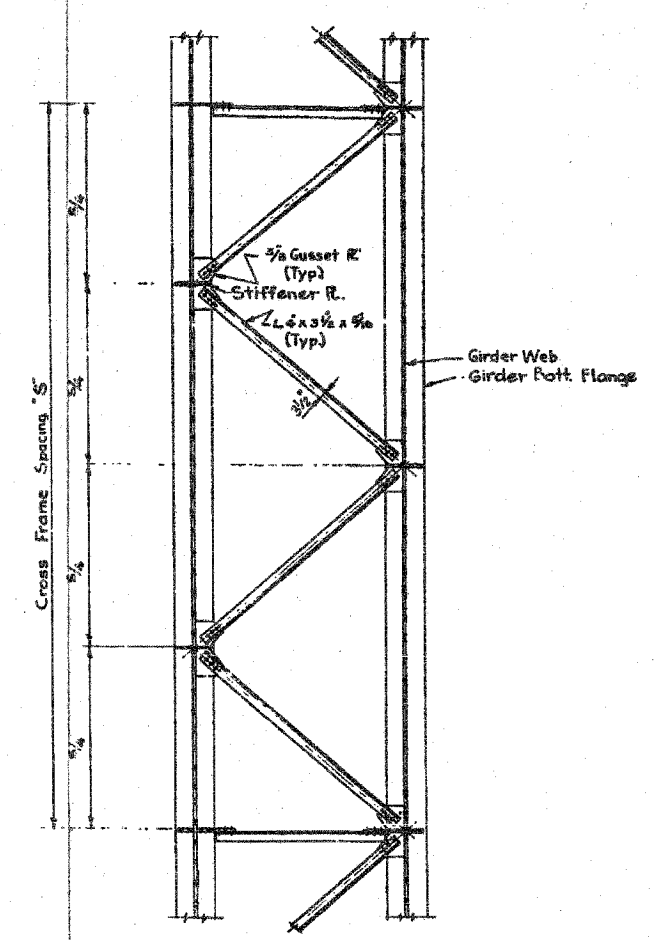
**END CROSS FRAMES**



**CROSS FRAME CF-9**  
(72" WEB GIRDERS)



SECTION M-M



**LATERAL BRACING PLAN**  
(SPANS 10 & A9)

Note: For general layout of lateral bracing, see Framing Plans

CITY OF CHICAGO  
DEPARTMENT OF PUBLIC WORKS  
BUREAU OF ENGINEERING  
**SOUTH ROUTE SUPERHIGHWAY**  
SECTION NO. 13-2424.3-1M  
(S. 2424.3-1M)  
CHICAGO RIVER TO W. CERMAK RD  
**STRUCTURAL STEEL DETAILS**  
CONSOER, TOWNSEND & ASSOCIATES  
CONSULTING ENGINEERS  
CHICAGO, ILLINOIS  
DESIGNED BY I.A.A. CHECKED BY R.L.F.  
DRAWN BY J.H.D. IN CHARGE OF H.S.M.  
SCALE: NONE DATE: 5/20/04

BOWMAN, BARRETT & ASSOCIATES INC.  
CONSULTING ENGINEERS  
Chicago, Illinois  
312.228.0100  
www.bbandainc.com

FOR INFORMATION ONLY

REVISIONS	NAME	DATE

ILLINOIS DEPARTMENT OF TRANSPORTATION  
F.A.I. 94/90 (DAN RYAN EXPRESSWAY)  
SB DAN RYAN ELEVATED BRIDGE  
REPAIR FROM 15TH TO 28TH STREETS  
EXISTING PLAN INFORMATION  
SN 016-1113  
SCALE: NTS  
DATE: 5/25/2006  
DRAWN BY: MTR  
CHECKED BY: BLU

6-60' Standard Bridge on SHEETS 660-21 L.P. 06/13/04