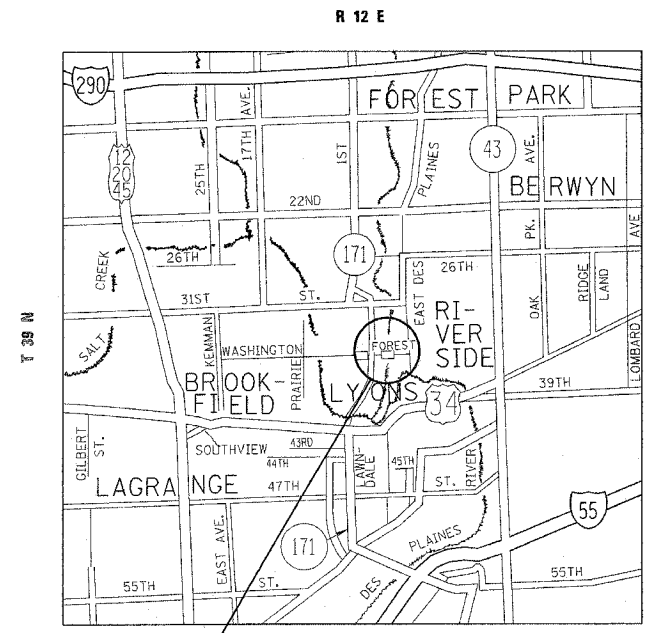
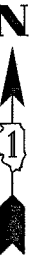


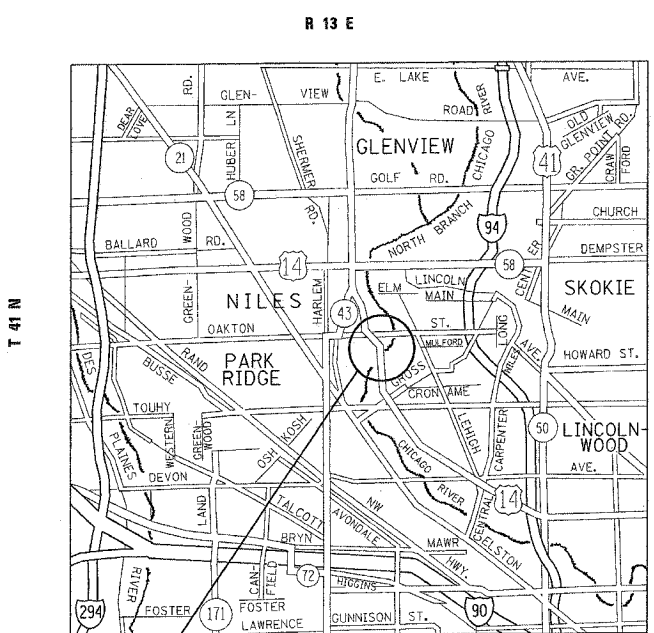
F.A. RTE.	SECTION	COUNTY	TOTAL SHEETS	SHEET NO.
VAR.	2003-067I	VARIOUS	27	4
STA.		TO STA.		
FED. ROAD DIST. NO.	ILLINOIS	FED. AID PROJECT		



LOCATION 1 - COOK COUNTY  
STRUCTURE NUMBER: 016-0874

FOREST AVENUE  
OVER  
THE DES PLAINES RIVER  
LOCATED IN RIVERSIDE TOWNSHIP

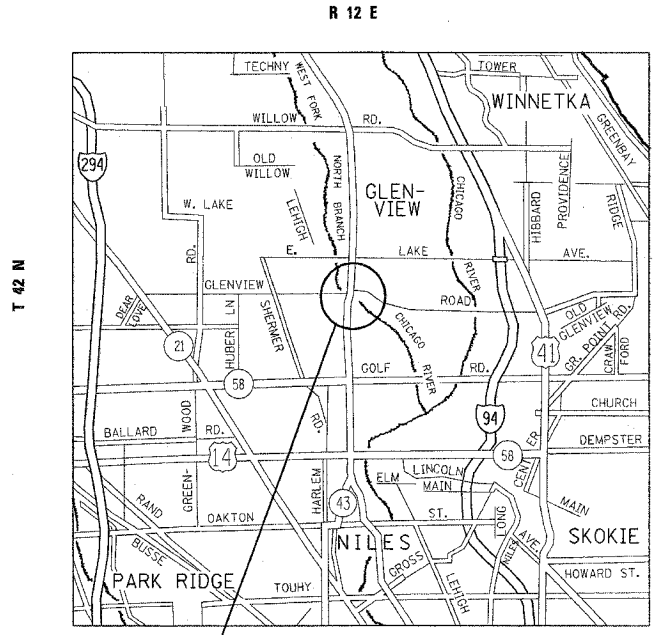
TRAFFIC DATA  
SPEED LIMIT = 25 MPH  
2002 ADT = 4,009



LOCATION 3 - COOK COUNTY  
STRUCTURE NUMBER: 016-0928

U.S. 14, CALDWELL AVENUE OVER THE NORTH BRANCH OF THE CHICAGO RIVER  
LOCATED IN NILES TOWNSHIP

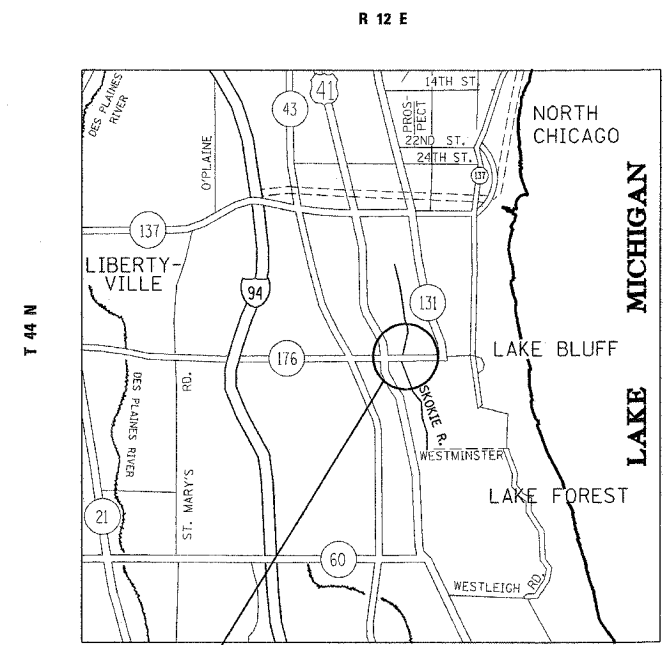
TRAFFIC DATA  
SPEED LIMIT = 40 MPH  
2005 ADT = 19,200



LOCATION 2 - COOK COUNTY  
STRUCTURE NUMBER: 016-0307

IL 43, WAUKEGAN ROAD  
OVER  
THE WEST FORK OF THE NORTH BRANCH OF THE CHICAGO RIVER  
LOCATED IN NORTHFIELD TOWNSHIP

TRAFFIC DATA  
SPEED LIMIT = 40 MPH  
2005 ADT = 29,700



LOCATION 4 - LAKE COUNTY  
STRUCTURE NUMBER: 049-0013

IL 176 OVER THE EAST SKOKIE DITCH  
LOCATED IN SHIELDS TOWNSHIP

TRAFFIC DATA  
SPEED LIMIT = 40 MPH  
2005 ADT = 12,300

REVISIONS	
NAME	DATE

ILLINOIS DEPARTMENT OF TRANSPORTATION

**LOCATION MAPS**

SCALE: VERT. \_\_\_\_\_  
HORIZ. \_\_\_\_\_  
DATE \_\_\_\_\_ DRAWN BY \_\_\_\_\_  
CHECKED BY \_\_\_\_\_

PLOT DATE = 5/19/2005  
FILE NAME = C:\projects\17183\design\shields.dgn  
PLOT SCALE = 1/8" = 100'-0"  
USER NAME = amthkl