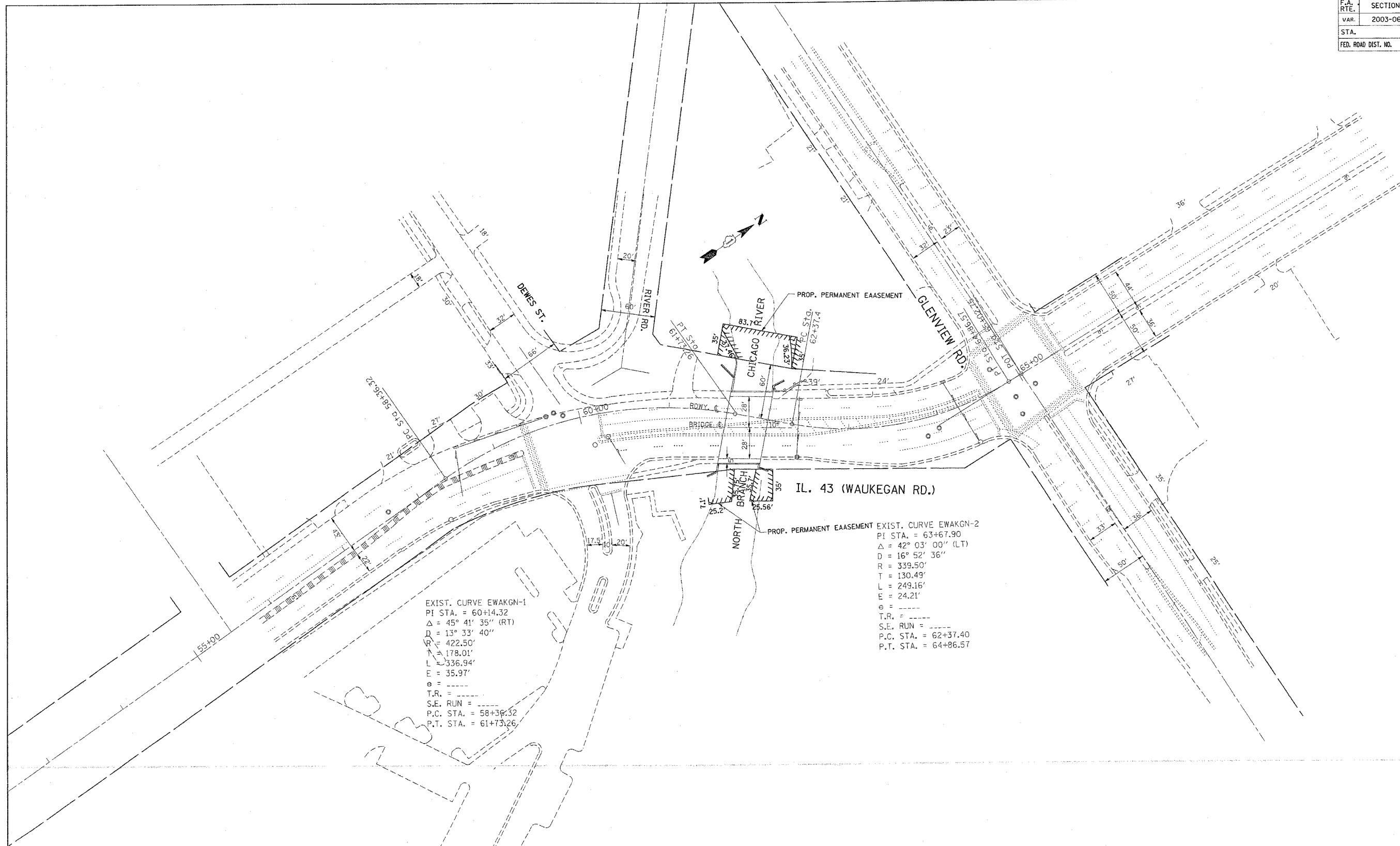
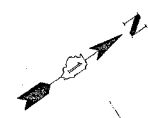


F.A. RTE.	SECTION	COUNTY	TOTAL SHEETS	SHEET NO.
VAR.	2003-0671	VARIOUS	27	9
STA.		TO STA.		
FED. ROAD DIST. NO.		ILLINOIS FED. AID PROJECT		



EXIST. CURVE EWAKGN-1
 PI STA. = 60+14.32
 $\Delta = 45^\circ 41' 35''$ (RT)
 $D = 13^\circ 33' 40''$
 $R = 422.50'$
 $T = 178.01'$
 $L = 336.94'$
 $E = 35.97'$
 $e =$
 T.R. =
 S.E. RUN =
 P.C. STA. = 58+39.32
 P.T. STA. = 61+73.26

EXIST. CURVE EWAKGN-2
 PI STA. = 63+67.90
 $\Delta = 42^\circ 03' 00''$ (LT)
 $D = 16^\circ 52' 36''$
 $R = 339.50'$
 $T = 130.49'$
 $L = 249.16'$
 $E = 24.21'$
 $e =$
 T.R. =
 S.E. RUN =
 P.C. STA. = 62+37.40
 P.T. STA. = 64+86.57



PLOT DATE = 5/12/2006
 FILE NAME = c:\projects\62635\dl1783\design\adgn
 PLOT SCALE = 50.0000 / IN.
 USER NAME = amc

REVISIONS	
NAME	DATE

ILLINOIS DEPARTMENT OF TRANSPORTATION

STR. NO. 016-0307
IL 43 WAUKEGAN RD. OVER
THE WEST FORK OF THE NORTH
BRANCH OF THE CHICAGO RIVER
LOCATION 2

SCALE: VERT. _____
 HORIZ. _____

DATE _____ DRAWN BY _____
 CHECKED BY _____