

**INDEX OF SHEETS**

1. TITLE SHEET
2. SUMMARY OF QUANTITIES
- 3-6. DISTRICT 1 STANDARD TRAFFIC SIGNAL DETAILS
7. ILL. RTE. 132 AT ILL. RTE. 83 TRAFFIC SIGNAL MODERNIZATION PLAN
8. ILL. RTE. 132 AT ILL. RTE. 83:
  - CABLE PLAN
  - PHASE DESIGNATION DIAGRAM
  - SCHEDULE OF QUANTITIES
9. ILL. RTE. 132 AT DEEP LAKE RD. TRAFFIC SIGNAL MODERNIZATION PLAN
10. ILL. RTE. 132 AT DEEP LAKE RD.:
  - CABLE PLAN
  - PHASE DESIGNATION DIAGRAM
  - EMERGENCY VEHICLE PREEMPTION SEQUENCE
  - SCHEDULE OF QUANTITIES
11. ILL. RTE. 132 AT MUNN RD. TRAFFIC SIGNAL MODERNIZATION PLAN
12. ILL. RTE. 132 AT MUNN RD.:
  - CABLE PLAN
  - PHASE DESIGNATION DIAGRAM
  - EMERGENCY VEHICLE PREEMPTION SEQUENCE
  - SCHEDULE OF QUANTITIES
13. ILL. RTE. 132 AT GRANADA BLVD. TRAFFIC SIGNAL MODERNIZATION PLAN
14. ILL. RTE. 132 AT GRANADA BLVD.:
  - CABLE PLAN
  - PHASE DESIGNATION DIAGRAM
  - EMERGENCY VEHICLE PREEMPTION SEQUENCE
  - SCHEDULE OF QUANTITIES
15. ILL. RTE. 132 AT SAND LAKE RD. TRAFFIC SIGNAL MODERNIZATION PLAN
16. ILL. RTE. 132 AT SAND LAKE RD.:
  - CABLE PLAN
  - PHASE DESIGNATION DIAGRAM
  - EMERGENCY VEHICLE PREEMPTION SEQUENCE
  - SCHEDULE OF QUANTITIES
17. INTERCONNECT PLAN
18. INTERCONNECT PLAN
19. INTERCONNECT SCHEMATIC PLAN

**STANDARDS**

701006-02701011-01 701101-01 701301-02814001  
 702001-06424001-04 857001 880006 701801-03

**STATE OF ILLINOIS**

**DEPARTMENT OF TRANSPORTATION**

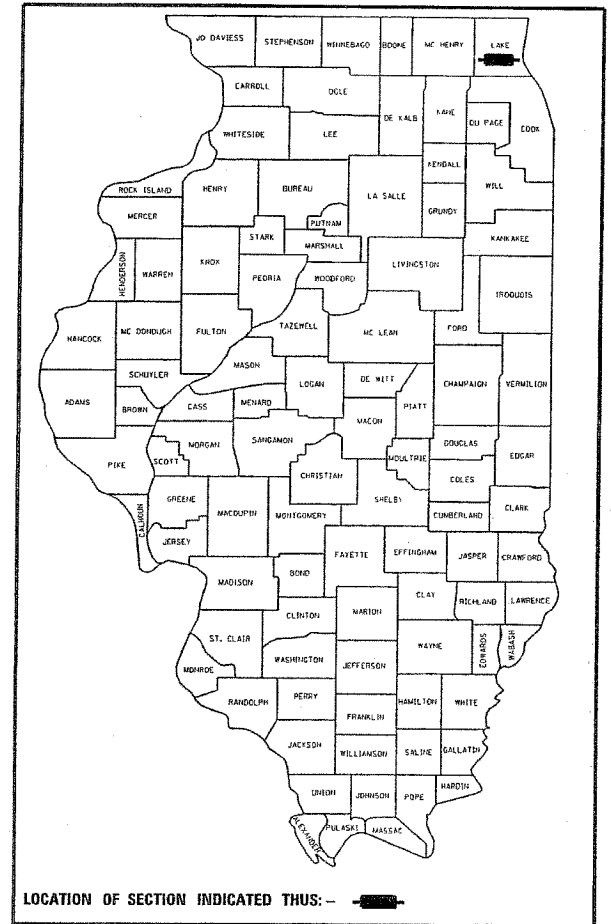
**DIVISION OF HIGHWAYS**

**PLANS FOR PROPOSED FEDERAL AID HIGHWAY**

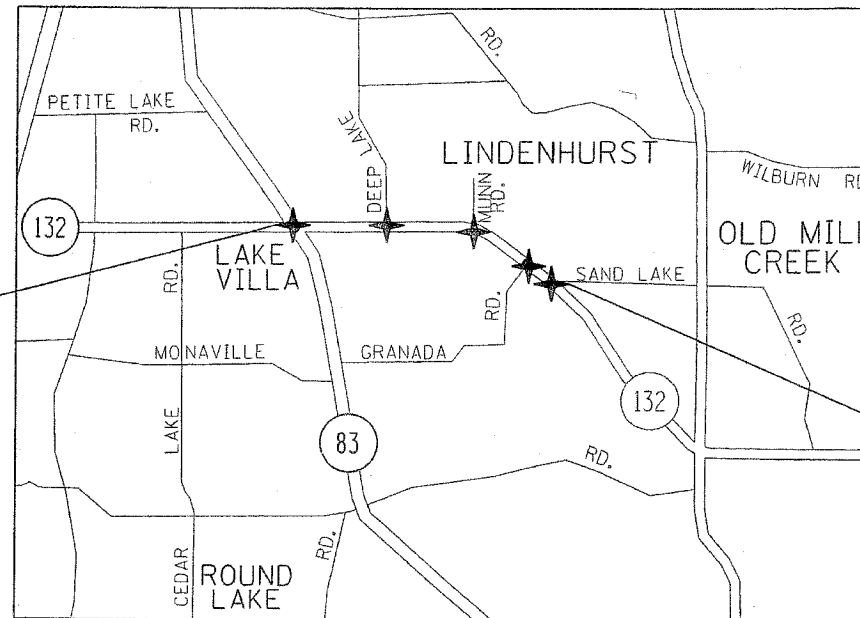
**DISTRICT 1  
 CONGESTION MITIGATION AIR QUALITY  
 FIBER OPTIC COMMUNICATION NETWORKS  
 FAP ROUTE 541 ILL. RTE 132 (GRAND AVE.) FROM  
 ILL. RTE. 83 TO SAND LAKE RD.  
 SECTION 2004-121 TS  
 LAKE COUNTY  
 C-91-077-05  
 PROJECT: CMF-0541(011)**

F.A.P. RTE.	SECTION	COUNTY	TOTAL SHEETS	SHEET NO.
541	2004-121 TS	LAKE	19	1

CONTRACT NO. 62887  
 D-91-007-05



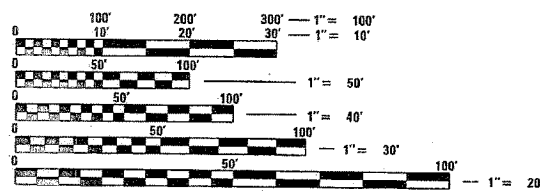
**LOCATION MAP  
 (NOT TO SCALE)**



IMPROVEMENT LOCATED IN THE VILLAGE OF LAKE VILLA AND LINDENHURST

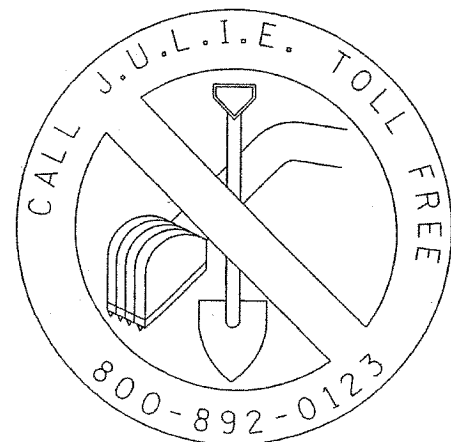
PROJECT ENDS

PROJECT BEGIN



FULL SIZE PLANS HAVE BEEN PREPARED USING STANDARD ENGINEERING SCALES. REDUCED SIZED PLANS WILL NOT CONFORM TO STANDARD SCALES. IN MAKING MEASUREMENTS ON REDUCED PLANS, THE ABOVE SCALES MAY BE USED.

Prepared by Steve Tawin, P.E. Traffic Engineer  
 Date May 13, 2006



LAKE VILLA AND LINDENHURST TOWNSHIP  
 LOCATION MAP

STATE OF ILLINOIS  
 DEPARTMENT OF TRANSPORTATION  
 DIVISION OF HIGHWAYS

SUBMITTED May 19, 2006

Kevin M. O'Keefe, P.E.  
 DEPUTY DIRECTOR OF HIGHWAYS, REGION ENGINEER

June 30, 2006  
Mike Hinojosa, P.E.  
 ENGINEER OF DESIGN AND ENVIRONMENT

June 30, 2006  
Rutton L. Sees, P.E.  
 DIRECTOR OF HIGHWAYS, CHIEF ENGINEER

**PRINTED BY THE AUTHORITY  
 OF THE STATE OF ILLINOIS**

DISTRICT ONE - BUREAU OF TRAFFIC - STEVE TRAVIA/DARYLE DREW (847) 705-4420