

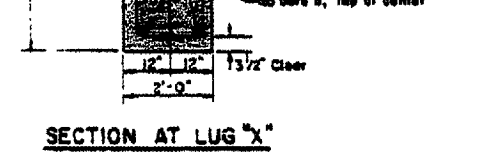
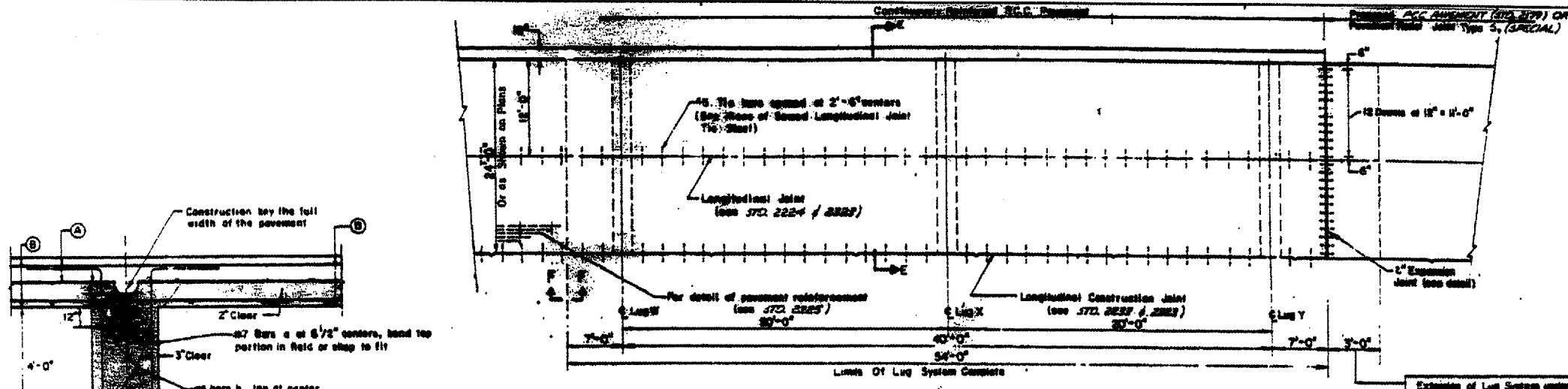
TOTAL SHEETS	SHEET NUMBER
16	11

62962

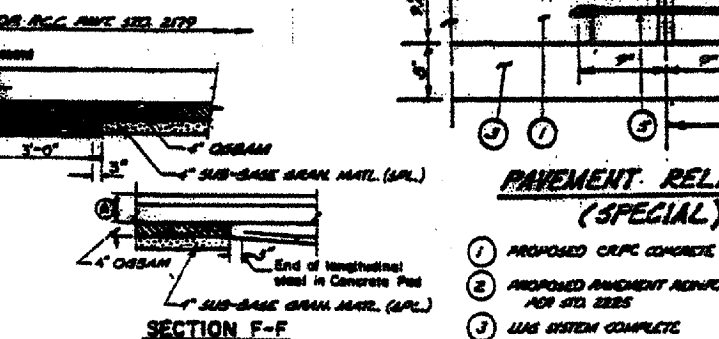
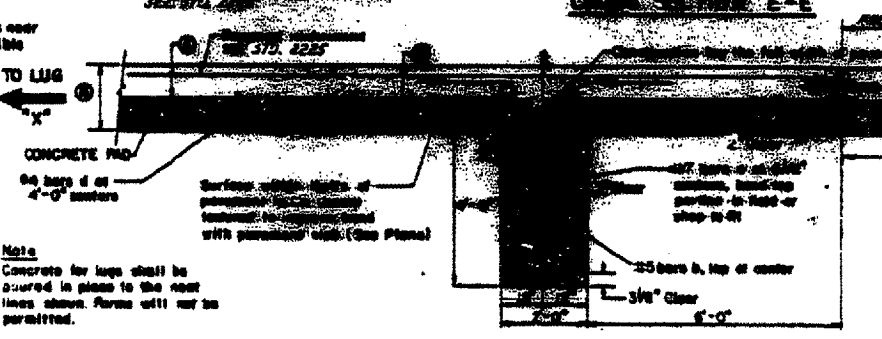
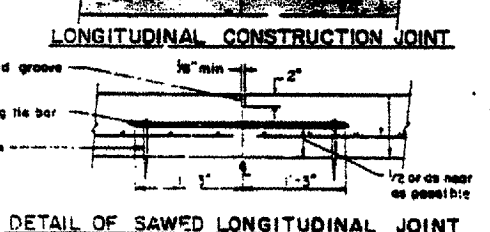
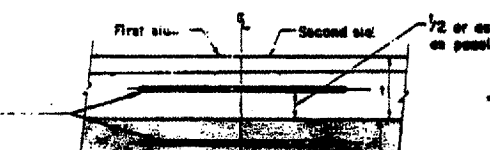
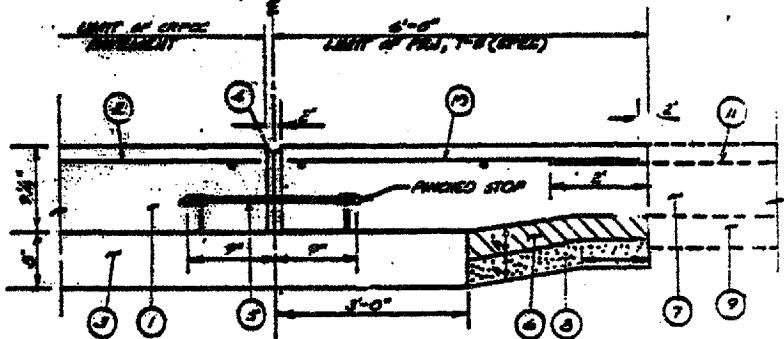
LOCATION OF LUG SYSTEMS COMPLETE

LOCATION	PAVEMENT WIDTH
STA. 463+00 TO 463+54 LT	36'
STA. 463+00 TO 463+54 RT	36'
STA. 491+08 TO 491+62 RT	24'
STA. 803+71.93 TO 804+82.93 LT	24'

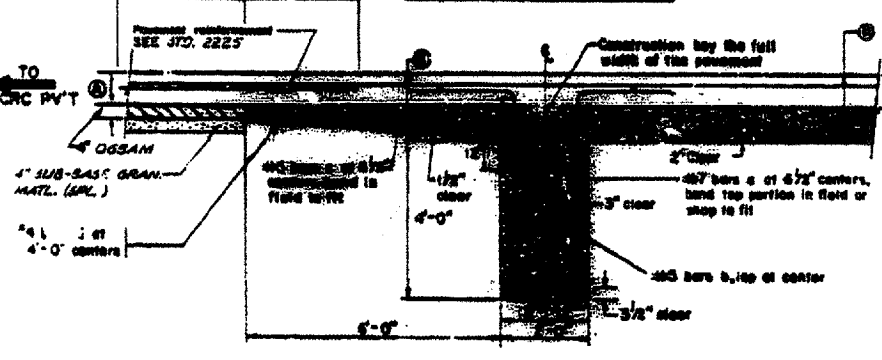
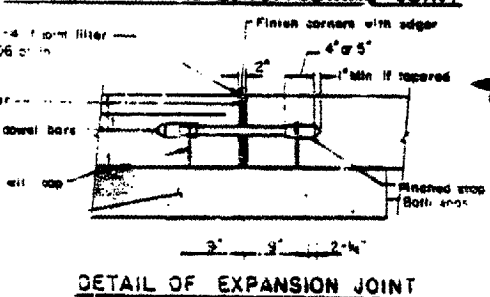
* MEET EXISTING CRP PAVEMENT. USE PAVEMENT RELIEF JOINT TYPE 5. (SPECIAL).



NOTE: SEE TYPICAL SECTIONS FOR PAVEMENT WIDTHS / CROSS SLOPES.



- GENERAL NOTES**
- PROPOSED CRPC CONCRETE PAVEMENT
 - PROPOSED PAVEMENT REINFORCEMENT FOR STD. 2225
 - LUG SYSTEM COMPLETE
 - PROPOSED IMPROVED EXPANSION JOINT
 - PROPOSED 1/2" x 1/2" PRECASTED SMOOTH CONCRETE ASSEMBLIES @ 12" C-C
 - PROPOSED OCSA
 - EXISTING CRP PAVEMENT 8"
 - PROPOSED 4" SUB-BASE GRAN. MATL. (SPECIAL)
 - EXISTING STABILIZED SUB-BASE 4"
 - REINFORCING STEEL SHALL BE INCIDENTAL TO PAVEMENT RELIEF JOINT, TYPE 5 (SPECIAL) AND SHALL BE SPACED AS PER CRPC PAVEMENT.
 - EXIST. CRP PAVEMENT REINFORCEMENT



When a slip form paver is used, the OCSA shall be constructed to a width 6 inches wider than the width from outside to outside of the slip form paver tracks. When this results in a width greater than shown on the plans, such extended width will not be measured for payment, but shall be considered incidental to OPEN GRADED SYNTHETIC AGGREGATE MIXTURE.

When it is required that the concrete pad be extended beyond the width shown in SECTION E-E, such extended width will not be measured for payment, but shall be considered incidental to LUG SYSTEM COMPLETE.

For pavement reinforcement see STANDARD 2225.

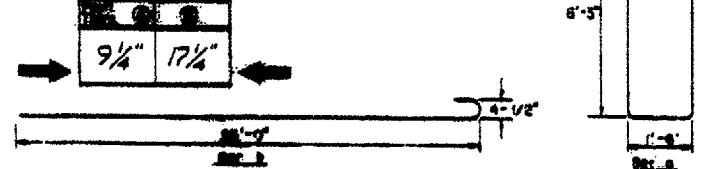
LUG SYSTEM COMPLETE shall be performed in accordance with applicable portions of Section 409 of the STANDARD SPECIFICATIONS. The CRP Pavement over the lugs will be paid for as CRP Pavement.

Expansion joint shall be considered incidental to the cost of CRP Pavement.

All Reinforcing Steel shall be epoxy coated. Devel Bar Assembly shall be epoxy or plastic coated.

In locations where the Proposed CRP Pavement meets existing Pavement, the construction of a Pavement Relief Joint shall be required as detailed in the Plans.

INFORMATION ONLY



ILLINOIS DEPARTMENT OF TRANSPORTATION
 IL ROUTE 53 EXTENSION
 PAVEMENT RELIEF JOINT
 (INFORMATION ONLY)