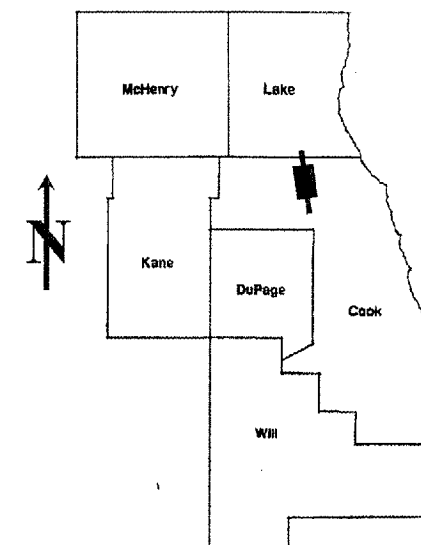


ROUTE	SECTION	COUNTY	TOTAL SHEETS	SHEET NUMBER
FAP 342	530CRC-PP	COOK	16	1

STATE OF ILLINOIS
DEPARTMENT OF TRANSPORTATION
DIVISION OF HIGHWAYS
DISTRICT ONE
PROPOSED HIGHWAY PLANS

CONTRACT NO. 62962

D-91-215-05



LOCATION OF IMPROVEMENT INDICATED THUS:

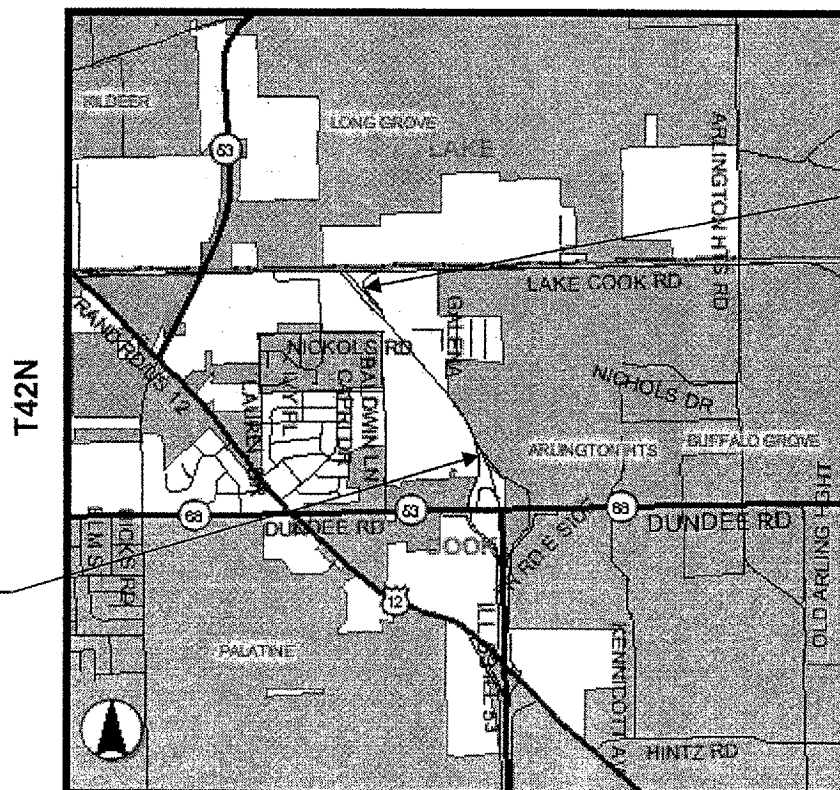
FOR INDEX OF SHEETS SEE SHEET 2

IMPROVEMENT LOCATED IN THE VILLAGE OF ARLINGTON HEIGHTS

FAP 342: IL 53 EXTENTION
 IL RTE. 68(DUNDEE RD.) TO LAKE-COOK RD
 SECTION: 530CRC-PP
 *CRC PAVEMENT PATCHING
 COOK COUNTY
 C-91-215-05

* BITUMINOUS CLASS D
 PATCHING OF CRC PAVEMENT

R10E



**IMPROVEMENT ENDS:
STA. 492+00**

**IMPROVEMENT BEGINS:
STA. 443+00**

TRAFFIC DATA

SPEED LIMIT = 55 MPH
 2003 ADT = 71,300

CONTRACT NO. 62962

GROSS LENGTH OF IMPROVEMENT = 4,900 FT = 0.93 MILES
 NET LENGTH OF IMPROVEMENT = 4,900 FT = 0.93 MILES

STATE OF ILLINOIS
 DEPARTMENT OF TRANSPORTATION
 DIVISION OF HIGHWAYS
 SUBMITTED: Oct. 27 2005
Diane M. O'Keefe
 DEPUTY DIRECTOR OF HIGHWAYS, REGION ENGINEER
December 9, 2005
Mike Hine
 ENGINEER OF DESIGN AND ENVIRONMENT
December 9, 2005
Eric Hain
 DEPUTY DIRECTOR, DIVISION OF HIGHWAYS

**PRINTED BY THE AUTHORITY
 OF THE STATE OF ILLINOIS**

**J.U.L.I.E.: JOINT UTILITY LOCATION
 INFORMATION FOR EXCAVATION
 (800)892-0123**

DISTRICT ONE - DESIGN - PLAN PREPARATION ENGINEER:
 KEN ENG / ROBERT BORO (847) 705-4178

ROUTE	SECTION	COUNTY	TOTAL SHEETS	SHEET NUMBER
FAP 342	530CRC-PP	COOK	16	2

CONTRACT 62962

INDEX OF SHEETS

STATE STANDARDS

<u>SHEET NO.</u>	<u>DESCRIPTION</u>
1	TITLE SHEET
2	INDEX OF SHEETS, STATE STANDARDS
3	GENERAL NOTES
4	SUMMARY OF QUANTITIES
5	TYPICAL SECTION
6 - 7	PAVEMENT PATCHING SCHEDULE
8 - 10	TRAFFIC CONTROL PLAN
11	PAVEMENT JOINT DETAIL
12	FREEWAY ENTRANCE AND EXIT RAMP CLOSURE DETAILS
13	TRAFFIC CONTROL DETAILS FOR FREEWAY SINGLE & MULTI-LANE WEAVE
14 - 15	MULTI-LANE FREEWAY PAVEMENT MARKING DETAILS
16	TRAFFIC CONTROL DETAILS FOR FREEWAY SHOULDER CLOSURES & PARTIAL RAMP CLOSURES

442201 - 01	CLASS D PATCHES
701400 - 02	APPROACH TO LANE CLOSURE, FREEWAY / EXPRESSWAY
701401 - 03	LANE CLOSURE, FREEWAY / EXPRESSWAY
701411 - 03	LANE CLOSURE, MULTILANE, AT ENTRANCE OR EXIT RAMP, FOR SPEEDS \geq 45 MPH
701446	TWO LANE CLOSURE, FREEWAY / EXPRESSWAY
702001 - 06	TRAFFIC CONTROL DEVICES

ILLINOIS DEPARTMENT OF TRANSPORTATION

**INDEX OF SHEETS
STATE STANDARDS**

ROUTE	SECTION	COUNTY	TOTAL SHEETS	SHEET NUMBER
FAP 342	530CRC-PP	COOK	16	3

CONTRACT 62962

GENERAL NOTES

BEFORE STARTING ANY EXCAVATION, THE CONTRACTOR SHALL CALL "J.U.L.I.E." AT (800) 892-0123 FOR FIELD LOCATIONS OF BURIED ELECTRIC, TELEPHONE AND GAS UTILITIES. (48 HOUR NOTIFICATION IS REQUIRED).

THE CONTRACTOR SHALL COORDINATE CONSTRUCTION ACTIVITIES WITH UTILITY COMPANIES.

THE CONTRACTOR WILL NOT BE ALLOWED TO SET UP A YARD OR FIELD OFFICE ON STATE PROPERTY WITHOUT WRITTEN PERMISSION FROM THE DEPARTMENT.

WHEN ARTIFICIAL LIGHTING IS UTILIZED IN NIGHT OPERATIONS, THE CONTRACTOR SHALL EXERCISE THE UTMOST PRECAUTIONS IN PREVENTING ADVERSE VISIBILITY TO THE MOTORING PUBLIC AND ADJOINING RESIDENTIAL AREAS.

BEFORE BEGINNING ANY WORK, THE CONTRACTOR SHALL RETAIN AND RECORD FOR FUTURE REFERENCES ALL EXISTING PAVEMENT MARKING LINES AND RAISED REFLECTIVE PAVEMENT MARKERS IN ORDER THAT THESE LOCATIONS CAN BE RE-ESTABLISHED FOR STRIPING. EXACT LOCATION OF ALL PAVEMENT MARKINGS SHALL BE AS DIRECTED BY THE ENGINEER.

IT SHALL BE THE CONTRACTOR'S RESPONSIBILITY TO VERIFY ALL DIMENSIONS AND CONDITIONS EXISTING IN THE FIELD PRIOR TO CONSTRUCTION AND ORDERING OF MATERIALS.

THE CONTRACTOR SHALL CONTACT THE DISTRICT ONE TRAFFIC CONTROL SUPERVISOR AT (847) 705-4151 A MINIMUM OF 72 HOURS IN ADVANCE OF BEGINNING WORK.

THE ENGINEER SHALL CONTACT WALTER CZARNY, AREA TRAFFIC FIELD ENGINEER AT (773) 685-8386 TWO (2) WEEKS PRIOR TO THE PLACEMENT OF PERMANENT PAVEMENT MARKING.

ALL DAMAGE TO EXISTING PAVEMENT MARKINGS ~~OR RAISED REFLECTIVE PAVEMENT MARKERS~~ OUTSIDE THE REMOVAL LINE SHOWN ON THE PLANS SHALL BE REPLACED AT THE CONTRACTOR'S EXPENSE.

THESE PLANS HAVE BEEN PREPARED FROM NOTES RECEIVED FROM THE BUREAU OF MAINTENANCE.

THE ENGINEER SHALL OBTAIN APPROVAL FROM THE DISTRICT ONE BUREAU CHIEF OF MAINTENANCE FOR ANY PROPOSED REVISIONS IN THE SCHEDULED PAVEMENT PATCHING LOCATIONS.

DO NOT SCALE PLANS FOR CONSTRUCTION DIMENSIONS.

NO PATCHING WORKS SHALL BE DONE AT LOCATIONS WHERE INDUCTIVE LOOP DETECTORS ARE LOCATED. ALL DAMAGE TO EXISTING LOOPS OR LUG SYSTEM SHOWN ON SHEET 9 SHALL BE REPLACED AT THE CONTRACTOR'S EXPENSE.

ALL EXISTING LANE LINE PAVEMENT MARKINGS REMOVED BY PATCHING OPERATIONS SHALL BE REPLACED IN WHOLE EVEN IF OPERATION REMOVES ONLY PART OF THE LANE LINE PAVEMENT MARKING.

THE CONTRACTOR SHALL BE RESPONSIBLE FOR THE NOTIFICATION OF ALL EMERGENCY SERVICES, SCHOOL DISTRICTS, I.D.O.T.'S COMMUNICATIONS CENTER, SPRINGFIELD TRUCK PERMIT SECTION AND OTHER AGENCIES AFFECTED BY THE CLOSURE. THE CONTRACTOR SHALL ALSO BE RESPONSIBLE FOR POSTING SIGNS THAT WILL INDICATE THE DATES THE CLOSURE WILL BE IN PLACE.

MIXTURE REQUIREMENTS

CLASS D PATCH	MIXTURE TYPE	AC/PG TYPE	MAX RAP %	AIR VOIDS (%)
TOP 2"	POLYMERIZED BITUMINOUS SURFACE COURSE, SUPERPAVE, IL-9.5mm, N90, MIX F, 2"	SBS/SBR PG 70-22	10%	4% @ 90 GYR
BOTTOM 7-1/2"	POLYMERIZED BITUMINOUS BINDER COURSE, SUPERPAVE, IL-19, N90, 7-1/2"	SBS/SBR PG 70-22	10%	4% @ 90 GYR

ILLINOIS DEPARTMENT OF TRANSPORTATION

GENERAL NOTES

ROUTE	SECTION	COUNTY	TOTAL SHEETS	SHEET NUMBER
FAP 342	530CRC-PP	COOK	16	4

CONTRACT 62962

SUMMARY OF QUANTITIES

*100% STATE
URBAN*

CODE NUMBER	DESCRIPTION	UNIT	CONSTRUCTION TYPE CODE 1000 TOTAL QUANTITY
X4420092	CLASS D PATCHES, TYPE II, 9 1/2"	SQ YD	235.3
X4420093	CLASS D PATCHES, TYPE III, 9 1/2"	SQ YD	317.3
X4420099	CLASS D PATCHES, TYPE IV, 9 1/2"	SQ YD	1913.3
67000400	ENGINEER'S FIELD OFFICE, TYPE A	CAL MO	3
67100100	MOBILIZATION	L SUM	1
X7011015	TRAFFIC CONTROL AND PROTECTION (EXPRESSWAYS)	L SUM	1
* 78008210	POLYUREA PAVEMENT MARKING TYPE I - 4"	FOOT	1200
* 78008220	POLYUREA PAVEMENT MARKING TYPE I - 5"	FOOT	1040
* 78008240	POLYUREA PAVEMENT MARKING TYPE I - 8"	FOOT	420
* 78100100	RAISED REFLECTIVE PAVEMENT MARKER	EACH	120

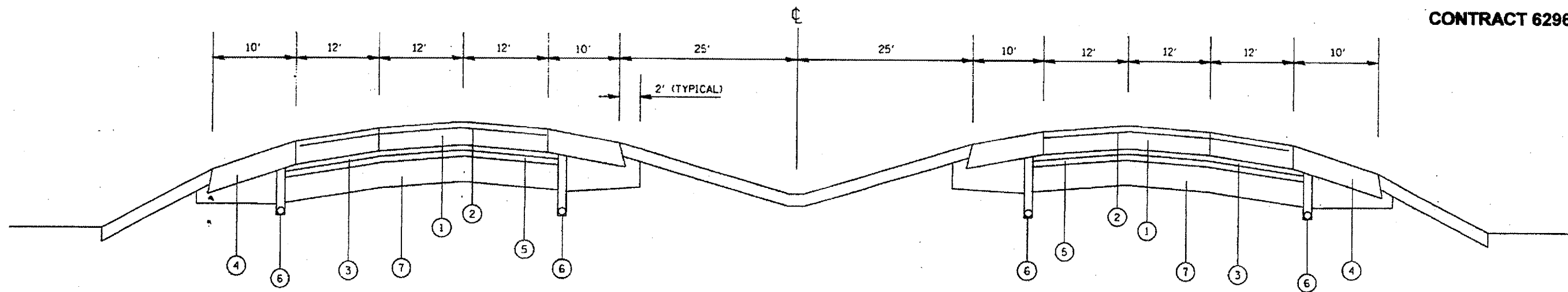
** SPECIALTY ITEMS*

ILLINOIS DEPARTMENT OF TRANSPORTATION

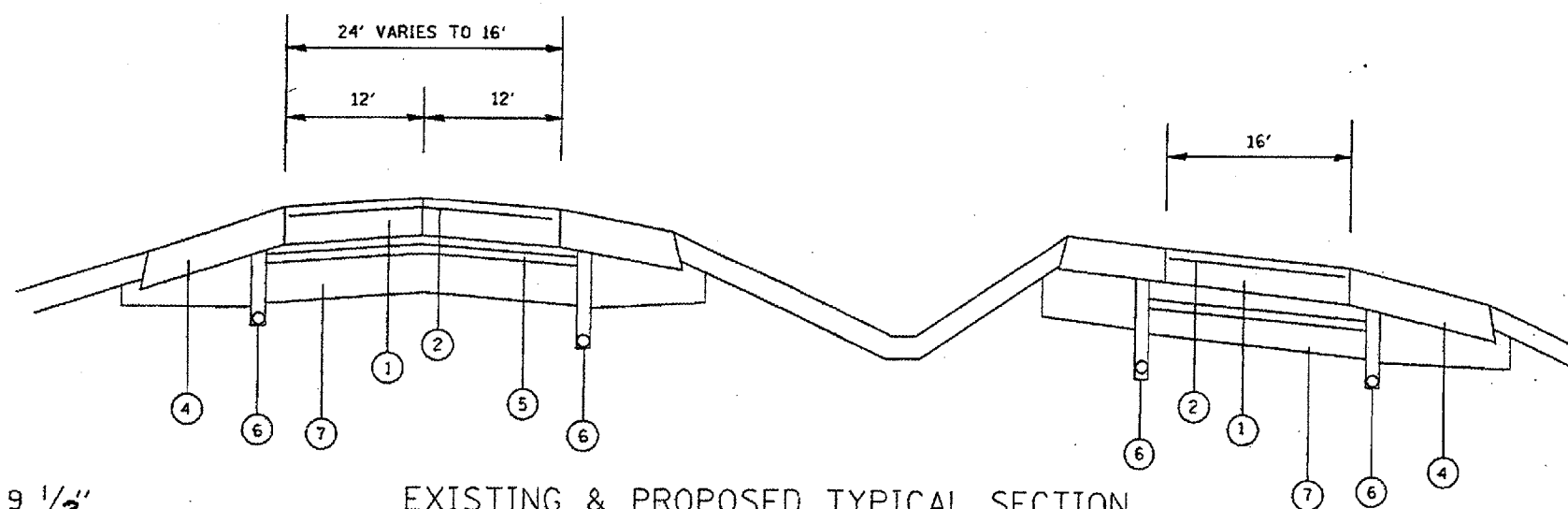
IL RTE. 53 EXTENSION
SUMMARY OF QUANTITIES

ROUTE	SECTION	COUNTY	TOTAL SHEETS	SHEET NUMBER
FAP 342	530CRC-PP	COOK	16	5

CONTRACT 62962



EXISTING & PROPOSED TYPICAL SECTION
IL RTE 53 EXTENSION



EXISTING & PROPOSED TYPICAL SECTION
IL RTE 53 EXTENSION
@ LAKE-COOK ROAD EXIT

LEGEND

1. CONTINUOUSLY REINFORCED P.C. CONCRETE PAVEMENT, 9 1/2"
2. PAVEMENT REINFORCEMENT
3. OPEN GRADED BITUMINOUS AGGREGATE MIXTURE
4. BITUMINOUS SHOULDER
5. SUB-BASE GRANULAR MATERIAL
6. PIPE UNDERDRAIN
7. POROUS GRANULAR EMBANKMENT

ILLINOIS DEPARTMENT OF
TRANSPORTATION
IL RTE 53 EXTENSION
TYPICAL SECTION

ROUTE	SECTION	COUNTY	TOTAL SHEETS	SHEET NUMBER
FAP 342	530CRC-PP	COOK	16	6

CONTRACT 62962

NORTHBOUND IL RTE. 53 EXTENSION

PATCH LOCATION NUMBER	STATION	LANE	Northbound			TYPE
			SIZE (L X W)	AREA (SQ. YD.)		
1	445+17	3	265 x 12	353.3	IV	
2	444+50	1	100 x 12	133.3	IV	
3	444+50	2	100 x 12	133.3	IV	
4			x			
5	447+67	1	50 x 6	33.3	IV	
6	448+50	1	40 x 12	53.3	IV	
7			x			
8	453+40	2	40 x 12	53.3	IV	
9	453+40	3	40 x 12	53.3	IV	
10	454+40	3	30 x 12	40.0	IV	
11	458+23	3	15 x 12	20.0	III	
12	462+79	2	8 x 12	10.7	II	
12A	462+79	3	8 x 12	10.7	II	
13	463+50	2	20 x 12	26.7	IV	
14	466+61	1	12 x 12	16.0	III	
15	466+67	2	42 x 12	56.0	IV	
16	469+95	1	20 x 12	26.7	IV	
17	469+95	2	20 x 12	26.7	IV	
18	471+55	2	20 x 12	26.7	IV	
19	471+53	1	6 x 12	8.0	II	
20	471+78	1	6 x 12	8.0	II	
21	474+77	2	15 x 12	20.0	III	
22	475+54	1	8 x 12	10.7	II	
23	475+96	2	12 x 12	16.0	III	
24	476+47	2	25 x 12	33.3	IV	
25	477+17	2	15 x 6	10.0	II	

PATCH LOCATION NUMBER	STATION	LANE	Northbound			TYPE
			SIZE (L X W)	AREA (SQ. YD.)		
26	478+00	2	30 x 12	40.0	IV	
27	479+25	2	40 x 6	26.7	IV	
28	479+37	1	15 x 12	20.0	III	
29	479+79	2	8 x 12	10.7	II	
30	480+97	1	6 x 12	8.0	II	
31	481+52	2	15 x 12	20.0	III	
32	482+02	1	8 x 12	10.7	II	
33	482+62	1	35 x 12	46.7	IV	
34	482+62	2	35 x 12	46.7	IV	
35	483+74	1	8 x 12	10.7	II	
36	486+13	3/Ramp*	12 x 12	16	III	
37	486+09	2	8 x 12	10.7	II	
38	486+58	1	20 x 12	26.7	IV	
39	486+58	2	20 x 12	26.7	IV	
40	486+85	1	10 x 12	13.3	II	
41	487+60	1	30 x 12	40.0	IV	
42	489+45	1	10 x 12	13.3	II	
43	489+45	2	10 x 12	13.3	II	
44	489+76	1	12 x 12	16.0	III	
45	489+76	2	12 x 12	16.0	III	
46	491+59	1/Ramp*	12 x 12	16.0	II	
47	491+60	2/Ramp*	12 x 12	16.0	II	

* SEE JOINT DETAILS (SHEET #11). THE COST OF PAVEMENT RELIEF JOINT SHALL BE INCIDENTAL TO CLASS A PATCHING.

- CENTER LINE OF IL RTE. 68 (DUNDEE) : STA. 435+44
- ALL STATIONINGS ARE CENTER OF EACH PATCHING LOCATIONS.

ILLINOIS DEPARTMENT OF TRANSPORTATION
**IL ROUTE 53 EXTENSION
PAVEMENT PATCHING SCHEDULE
1 OF 2**

ROUTE	SECTION	COUNTY	TOTAL SHEETS	SHEET NUMBER
FAP 342	530CRC-PP	COOK	16	7

CONTRACT 62962

SOUTHBOUND IL RTE. 53 EXTENSION

PATCH LOCATION NUMBER	LANE	STATION	Southbound		
			SIZE (L X W)	AREA (SQ. YD.)	TYPE
1	2	489+25	8 x 12	10.7	II
2	2	487+30	6 x 12	8.0	II
3	2	484+96	14 x 12	18.7	III
4	2	482+53	26 x 12	34.7	IV
5	2	481+62	40 x 12	53.3	IV
6	2	480+98	12 x 12	16.0	III
7	2	480+31	62 x 12	82.7	IV
8	2	479+64	14 x 12	18.7	III
9	2	479+31	14 x 12	18.7	III
10	2	478+40	40 x 12	53.3	IV
11	2	477+36	132 x 12	176.0	IV
12	2	475+95	32 x 12	42.7	IV
13	2	474+95	10 x 12	13.3	II
14	2	473+67	14 x 12	18.7	III
15	2	473+26	10 x 12	13.3	II
16	2	472+48	106 x 12	141.3	IV
17	2	471+31	14 x 12	18.7	III
18	2	469+80	10 x 12	13.3	II
19	2	468+53	6 x 12	8.0	II
20	2	468+04	20 x 12	26.7	IV
21	2	467+43	6 x 12	8.0	II
22	2	464+79	9 x 12	12.0	II
23	2	462+93	12 x 12	16.0	III

SCHEDULE TOTALS

CLASS D PATCHES, TYPE II	235 SQ YD
CLASS D PATCHES, TYPE III	317 SQ YD
CLASS D PATCHES, TYPE IV	1913 SQ YD
SAW CUTS	2712 FT

ILLINOIS DEPARTMENT OF TRANSPORTATION

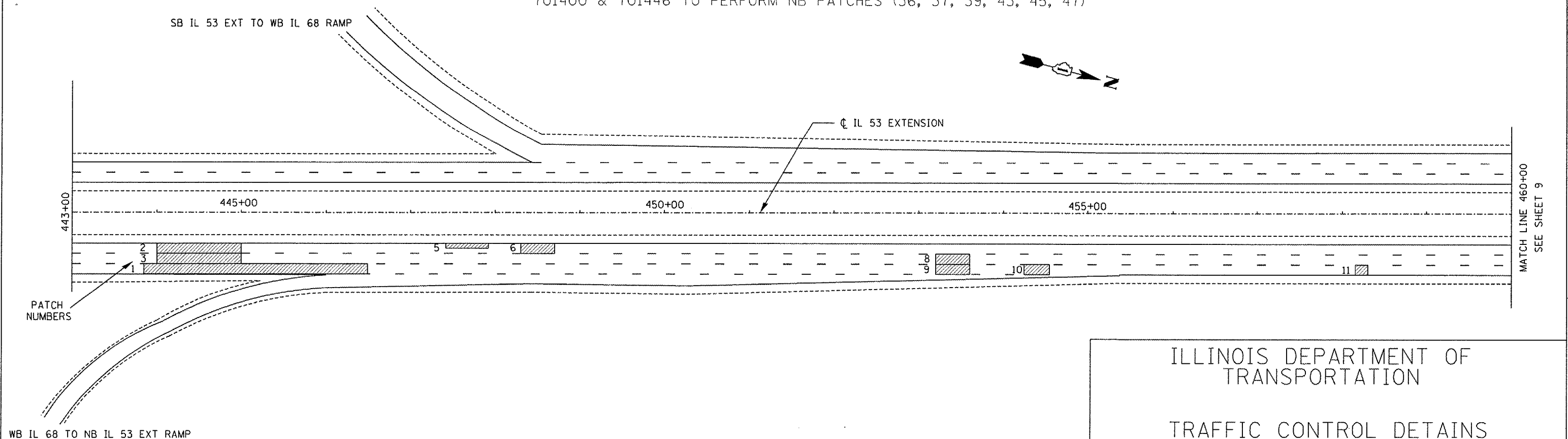
**IL ROUTE 53 EXTENSION
PAVEMENT PATCHING SCHEDULE
2 OF 2**

ROUTE	SECTION	COUNTY	TOTAL SHEETS	SHEET NUMBER
FAP 342	530 CRC-PP	COOK	16	8

CONTRACT 62962

STAGING NOTES

- SB STAGE I CLOSE EB LAKE-COOK RD TO SB IL 53 EXT ENTRANCE RAMP & CLOSE RIGHT LANE OF WB LAKE-COOK RD TO SB IL 53 EXT RAMP (SEE NOTE 1 ON SHEET 10) BEFORE SB PATCH #1 IN ORDER TO PERFORM SB PATCHES (#1 THRU #9). SMALL DETOUR SIGNS SHALL BE SET UP AHEAD OF HICKS ROAD TO FOLLOW ACTUAL IL 53. RAMP SHALL BE OPENED AFTER PATCHES ARE POURED USING TRAFFIC CONTROL DETAILS SHOWN ON SHEET 10.
- SB STAGE II CLOSE SB IL 53 EXT LANES #2 & #3 AS SHOWN ON THE STAGING PLAN & PERFORM SB PATCHES (#10 THRU #23) (SEE DETAILS SHEET 10)
- NB STAGE I CLOSE NB IL 53 EXT LANES #1 & #2 PER STATE STANDARDS 701400 & 701446 IN ORDER TO PATCH NB LANES (2, 3, 5, 6, 8, & 12 THRU 20)
- NB STAGE II CLOSE WB IL 68 TO NB IL 53 EXTENSION ENTRANCE RAMP & CLOSE LANE #3 PER STANDARDS 701400 & 701401 PROIR TO NB PATCH #1 IN ORDER TO PATCH NB LANES (1, 9, 10, 11, AND 12A)
- NB STAGE III CLOSE NB IL 53 EXT LANES #1 & #2 PROIR TO PATCH #21 \$ UP TO PATCH #35 PER STATE STANDARDS 701400 & 710446 & PERFORM NB PATCHES (21 THRU 34) AND CLOSE LANE 1 TO PERFORM NB PATCHES (35, 38, 40, 41, 42, 44, 46)
- NB STAGE IV CLOSE IL 53 EXT NB EXIT RAMP TO LAKE-COOK ROAD EB & LANE 2 #3 PER STANDARDS 701400 & 701446 TO PERFORM NB PATCHES (36, 37, 39, 43, 45, 47)

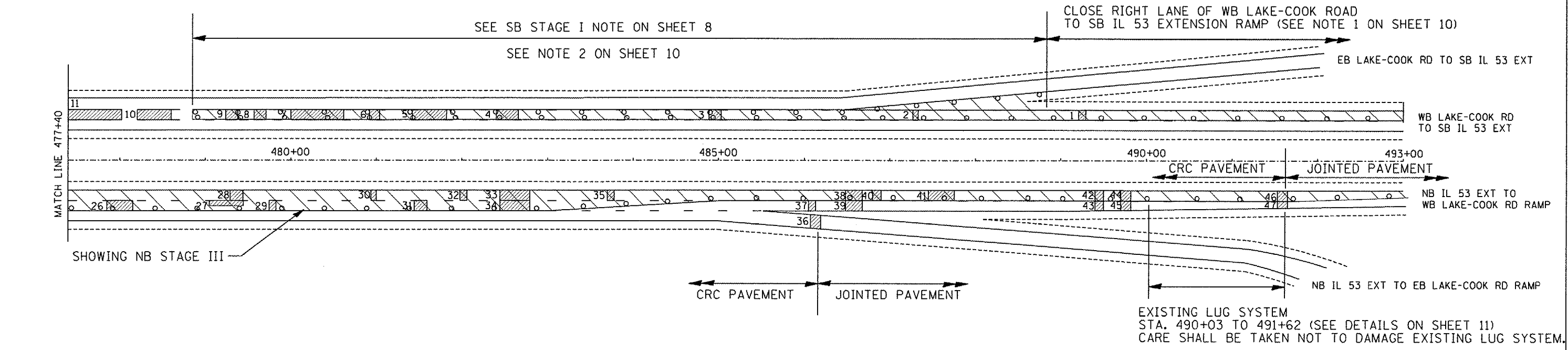
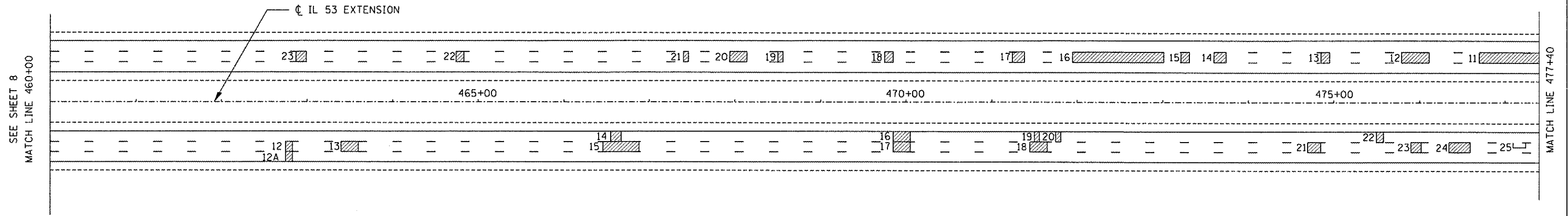
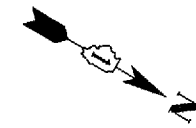


ILLINOIS DEPARTMENT OF
TRANSPORTATION

TRAFFIC CONTROL DETAILS
IL ROUTE 53 EXTENSION
1 OF 3

ROUTE	SECTION	COUNTY	TOTAL SHEETS	SHEET NUMBER
FAP 342	530 CRC-PP	COOK	16	9

CONTRACT 62962



EXISTING LUG SYSTEM
 STA. 490+03 TO 491+62 (SEE DETAILS ON SHEET 11)
 CARE SHALL BE TAKEN NOT TO DAMAGE EXISTING LUG SYSTEM.

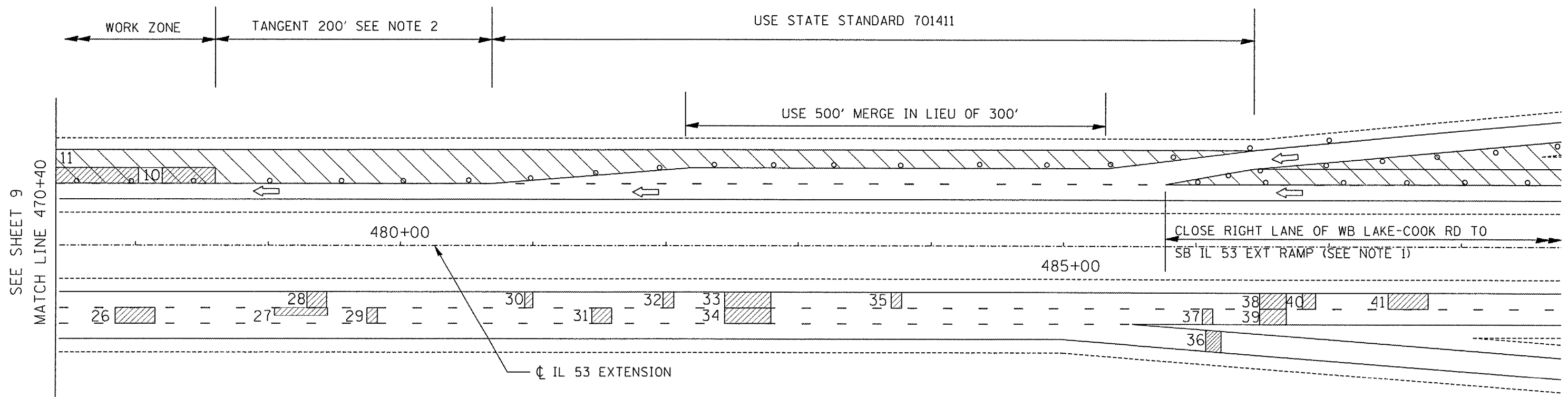
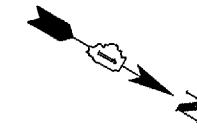
ILLINOIS DEPARTMENT OF
 TRANSPORTATION

TRAFFIC CONTROL DETAILS
 IL ROUTE 53 EXTENSION
 2 OF 3

ROUTE	SECTION	COUNTY	TOTAL SHEETS	SHEET NUMBER
FAP 342	530 CRC-PP	COOK	16	10

CONTRACT 62962

SOUTHBOUND STAGE II DETAIL



- NOTE 1: USE DIRECTION INDICATOR BARRICADES WITH STEADY BURNING MONODIRECTIONAL LIGHTS @ 50' CTS
- NOTE 2: USE TYPE II BARRICADES, DRUMS OR VERTICAL BARRICADES WITH STEADY BURNING MONODIRECTIONAL LIGHTS @ 50' CTS

ILLINOIS DEPARTMENT OF
TRANSPORTATION

TRAFFIC CONTROL DETAILS
IL ROUTE 53 EXTENSION
3 OF 3

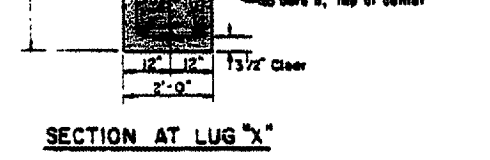
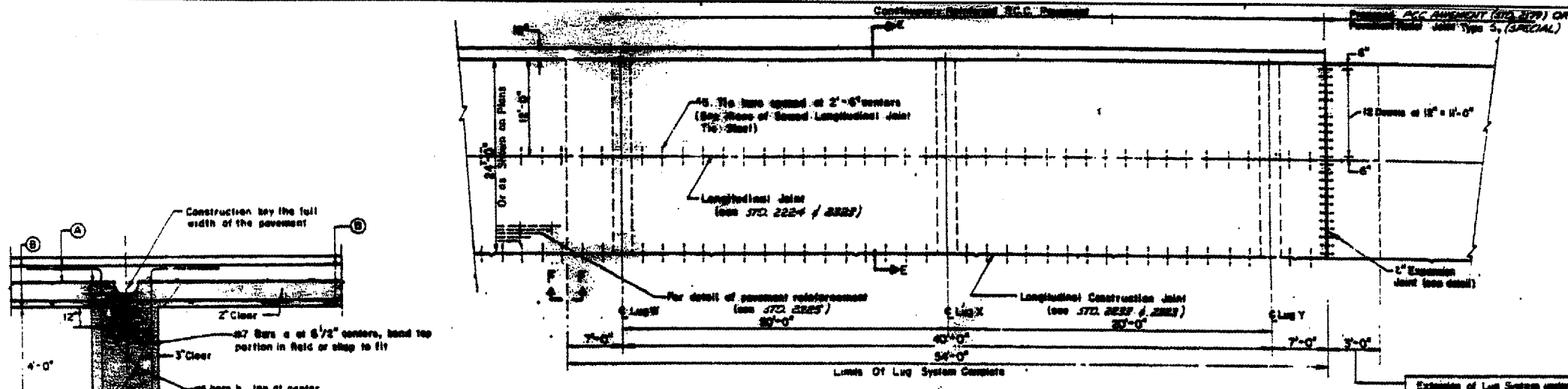
TOTAL SHEETS	SHEET NUMBER
16	11

62962

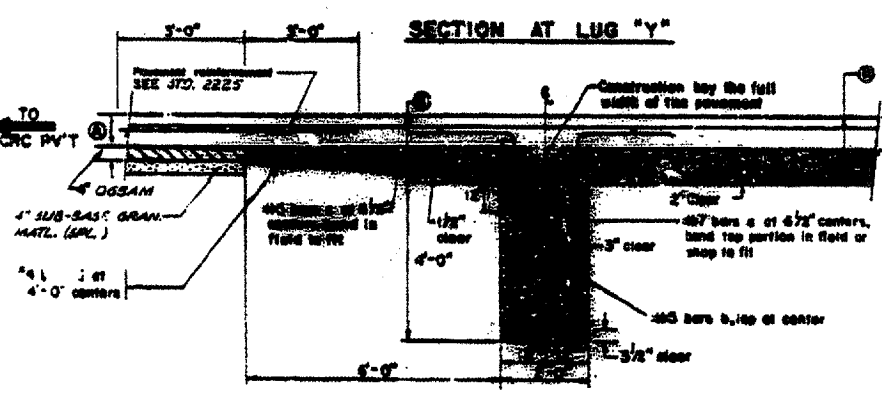
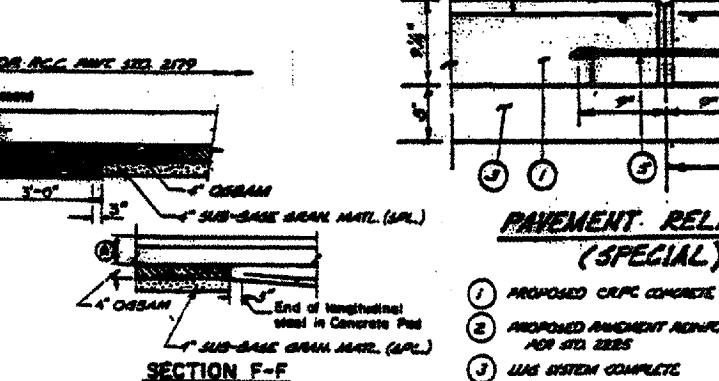
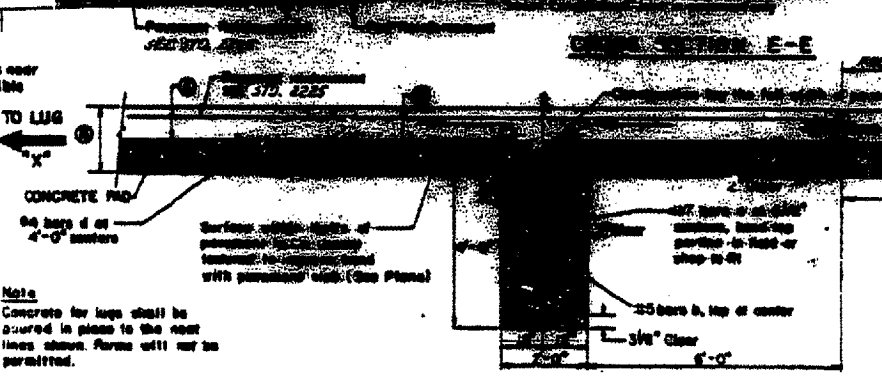
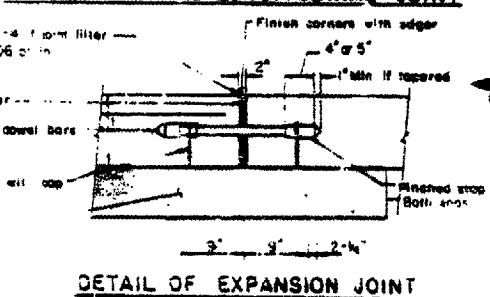
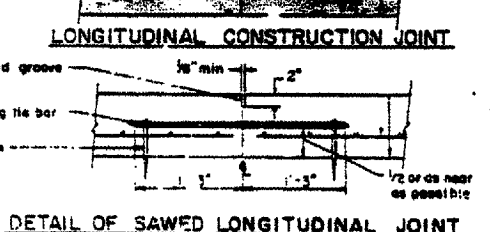
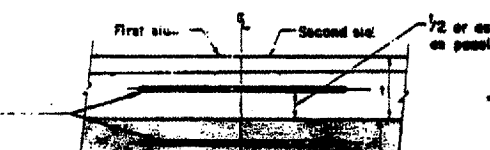
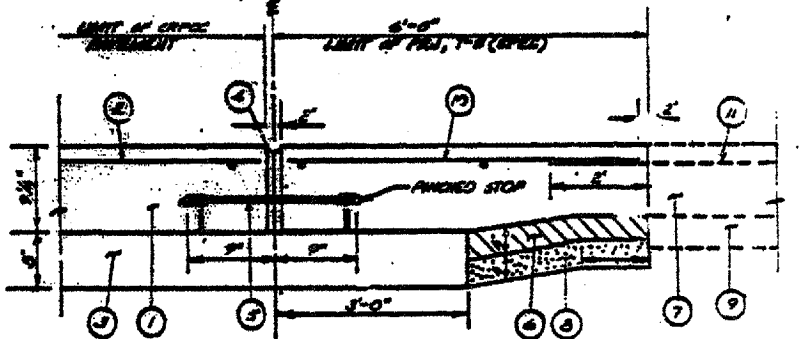
LOCATION OF LUG SYSTEMS COMPLETE

LOCATION	PAVEMENT WIDTH
STA. 463+00 TO 463+54 LT	36'
STA. 463+00 TO 463+54 RT	36'
STA. 491+08 TO 491+62 RT	24'
STA. 803+71.93 TO 804+82.93 LT	24'

* MEET EXISTING CRP PAVEMENT. USE PAVEMENT RELIEF JOINT TYPE 5. (SPECIAL).



NOTE: SEE TYPICAL SECTIONS FOR PAVEMENT WIDTHS / CROSS SLOPE.



- GENERAL NOTES**
- PROPOSED CRP CONCRETE PAVEMENT
 - PROPOSED PAVEMENT REINFORCEMENT FOR STD. 2225
 - LUG SYSTEM COMPLETE
 - PROPOSED IMPROVED EXPANSION JOINT
 - PROPOSED 1/2" x 1/2" PRECASTED SMOOTH CONCRETE ASSEMBLIES @ 12" C-C
 - PROPOSED CURB
 - EXISTING CRP PAVEMENT 8"
 - PROV. 4" SUB-BASE GRAN. MATL. (SPECIAL)
 - EXISTING STABILIZED SUB-BASE 4"
 - REINFORCING STEEL SHALL BE INCIDENTAL TO PAVEMENT RELIEF JOINT, TYPE 5 (SPECIAL) AND SHALL BE SPACED AS PER CRPCC PAVEMENT.
 - EXIST. CRP PAVEMENT REINFORCEMENT

When a slip form paver is used, the OCSA shall be constructed to a width 6 inches wider than the width from outside to outside of the slip form paver tracks. When this results in a width greater than shown on the plans, such extended width will not be measured for payment, but shall be considered incidental to OPEN GRADED SYNTHETIC AGGREGATE MIXTURE.

When it is required that the concrete pad be extended beyond the width shown in SECTION E-E, such extended width will not be measured for payment, but shall be considered incidental to LUG SYSTEM COMPLETE.

For pavement reinforcement see STANDARD 2225

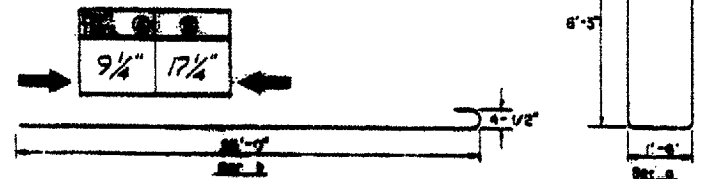
LUG SYSTEM COMPLETE shall be performed in accordance with applicable portions of Section 409 of the STANDARD SPECIFICATIONS. The CRP Pavement over the lugs will be paid for as CRP Pavement.

Expansion joint shall be considered incidental to the cost of CRP Pavement.

All Reinforcing Steel shall be epoxy coated. Devel Bar Assembly shall be epoxy or plastic coated.

In locations where the Proposed CRP Pavement meets existing Pavement, the construction of a Pavement Relief Joint shall be required as detailed in the Plans.

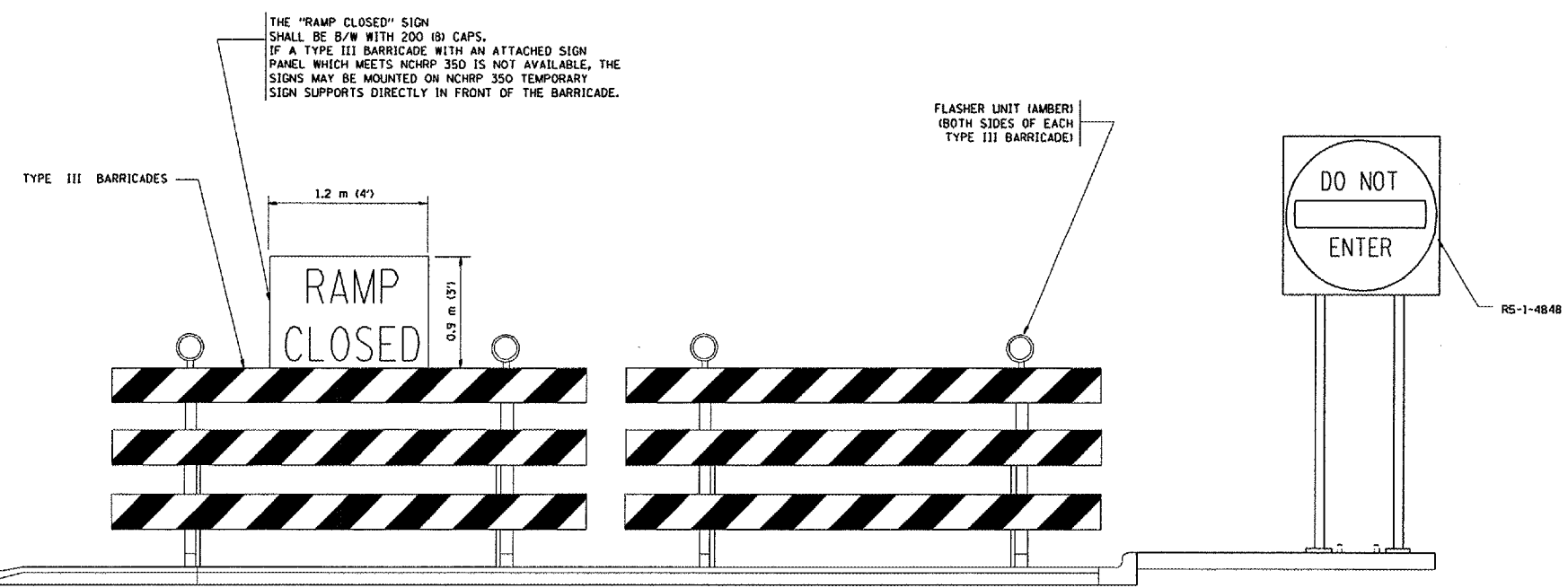
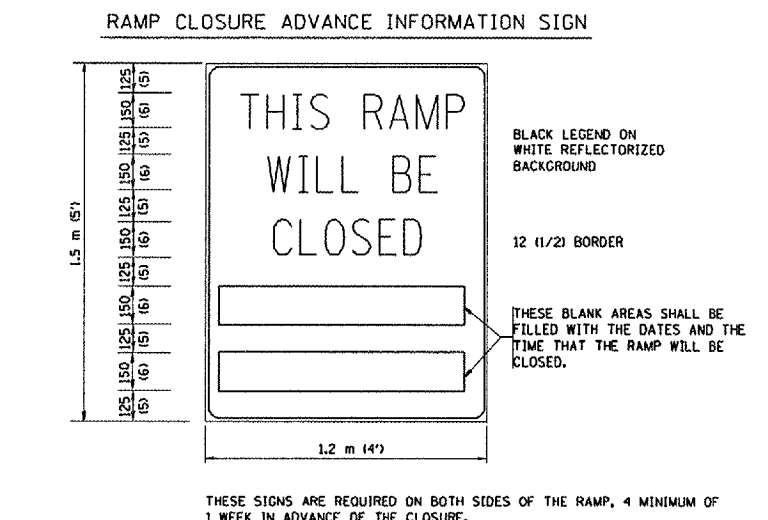
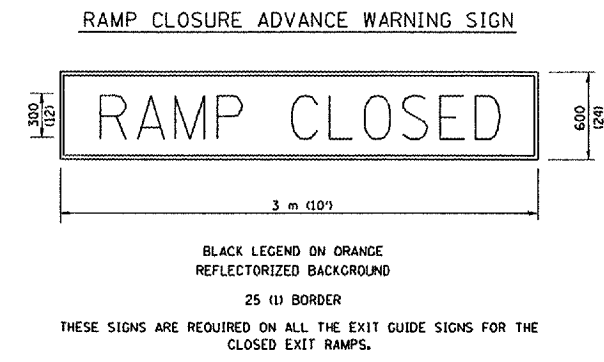
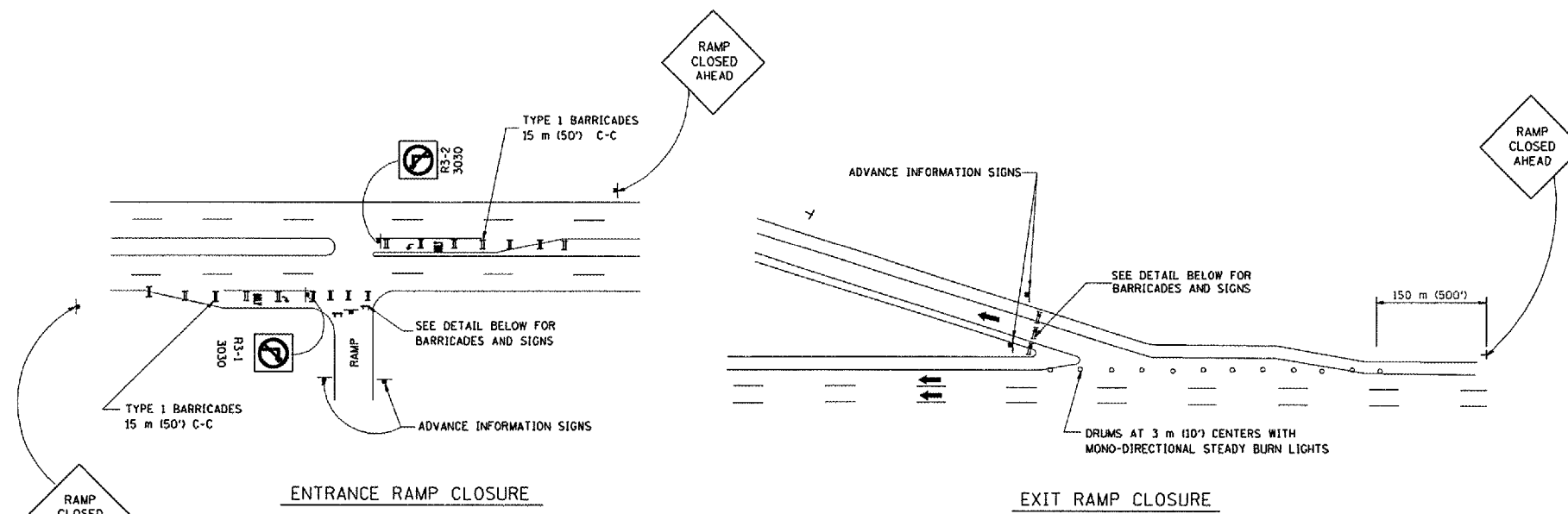
INFORMATION ONLY



ILLINOIS DEPARTMENT OF TRANSPORTATION

IL ROUTE 53 EXTENSION
PAVEMENT RELIEF JOINT
(INFORMATION ONLY)

F.A.P. RTE.	SECTION	COUNTY	TOTAL SHEETS	SHEET NO.
342	530CR-PP	COOK	16	12
STA.	TO STA.			
FED. ROAD DIST. NO.	ILLINOIS	FED. AID PROJECT		



THE "RAMP CLOSED" SIGN SHALL BE B/W WITH 200 (8) CAPS. IF A TYPE III BARRICADE WITH AN ATTACHED SIGN PANEL WHICH MEETS NCHRP 350 IS NOT AVAILABLE, THE SIGNS MAY BE MOUNTED ON NCHRP 350 TEMPORARY SIGN SUPPORTS DIRECTLY IN FRONT OF THE BARRICADE.

FLASHER UNIT (AMBER) (BOTH SIDES OF EACH TYPE III BARRICADE)

RS-1-4848

- GENERAL NOTES:
1. CONES MAY BE SUBSTITUTED FOR DRUMS OR TYPE II BARRICADES DURING DAY OPERATIONS. CONES SHALL BE A MINIMUM OF 700 (28) HIGH.
 2. STEADY BURN LIGHTS WILL NOT BE REQUIRED FOR DAY OPERATIONS.
 3. A FLAGGER SHALL BE POSITIONED AT EACH CLOSED RAMP THAT IS OPEN TO CONSTRUCTION VEHICLES.
 4. FOR DAYTIME RAMP CLOSURES, LASTING 6 HOURS OR LESS, THE CONTRACTOR MAY ELIMINATE THE ADVANCE WARNING SIGNS ON THE EXIT GUIDE SIGNS.
 5. ALL ROUTE MARKERS AND TRAILBLAZER ASSEMBLIES WHICH DIRECT MOTORISTS TO A CLOSED ENTRANCE RAMP SHALL BE COVERED.
 6. THE SIGNING AND BARRICADING WHICH IS REQUIRED BY THIS DETAIL SHALL BE CONSIDERED INCIDENTAL TO TRAFFIC CONTROL AND PROTECTION.
 7. AUTHORIZATION FROM THE DISTRICT'S BUREAU OF TRAFFIC IS REQUIRED FOR ALL RAMP CLOSURES.

- NOTES:
1. CONES MAY BE SUBSTITUTED FOR TYPE I AND TYPE II BARRICADES DURING DAY OPERATIONS. CONES SHALL BE A MINIMUM OF 28" IN HEIGHT.
 2. STEADY BURN LIGHTS WILL NOT BE REQUIRED FOR DAY OPERATIONS.
 3. THE RAMP CLOSURE ADVANCE INFORMATION SIGNS SHALL BE ERECTED IF THE CLOSURE TIME EXCEEDS TWENTY-FOUR (24) HOURS.
 4. ADDITIONAL ADVANCE WARNING SIGNS ON EXIT GUIDE SIGNING WILL BE REQUIRED FOR EXIT RAMP CLOSURES THAT EXCEED TWENTY FOUR (24) HOURS IN LENGTH.

REVISIONS	
NAME	DATE
DWS	2-83
DWS	1/90
DWS	9/94
DWS	12/94
DWS/JAF	12/02
Revise devices to meet NCHRP 350	4/03

ALL DIMENSIONS ARE IN MILLIMETERS (INCHES) UNLESS OTHERWISE SHOWN.

ILLINOIS DEPARTMENT OF TRANSPORTATION

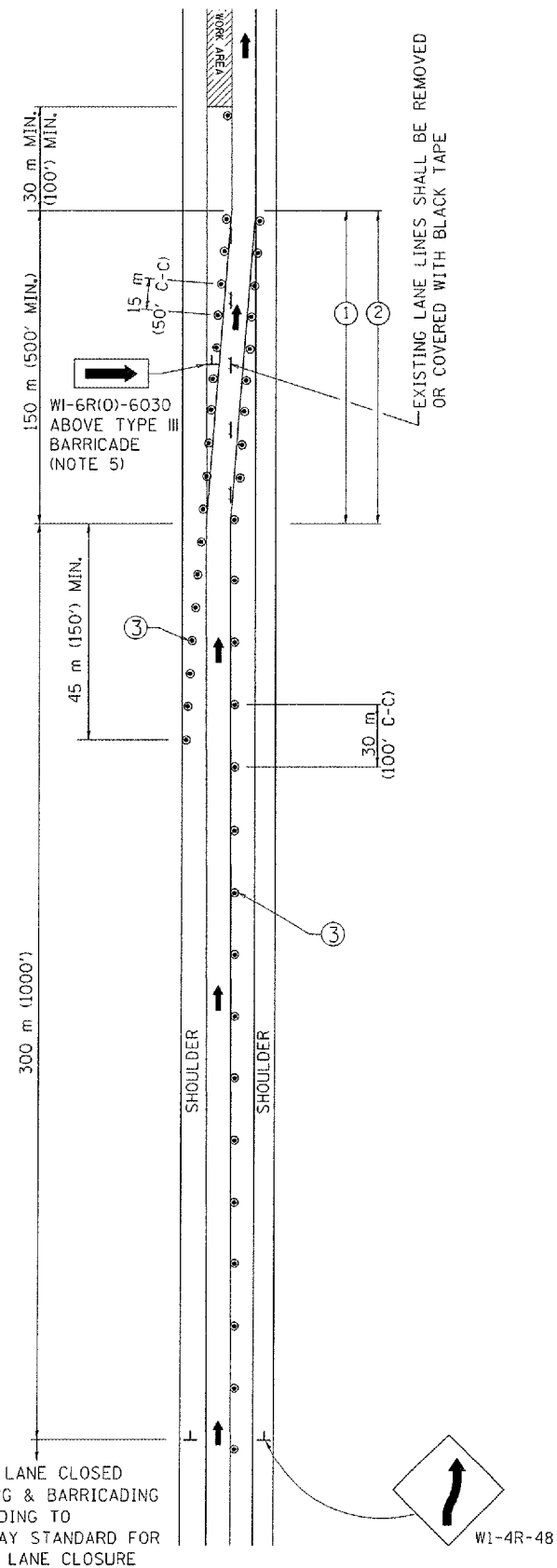
FREWAY ENTRANCE AND EXIT RAMP CLOSURE DETAILS

SCALE: NONE
DATE: 05/06/2003

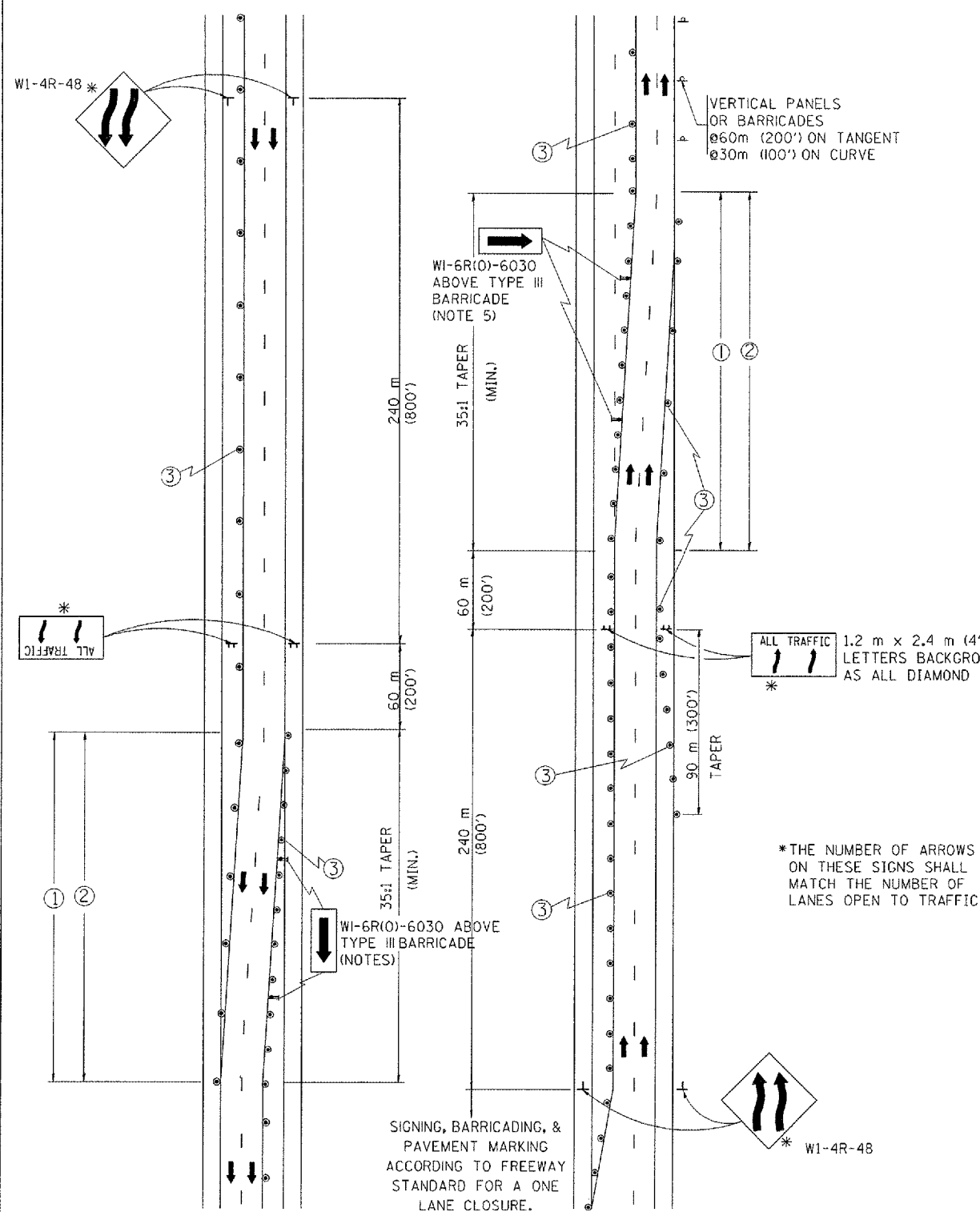
DRAWN BY: TC-8
CHECKED BY: TC-8

F.A.P. RITE	SECTION	COUNTY	TOTAL SHEETS	SHEET NO.
242520CR-PP	COOK		16	13
STA. _____		TO STA. _____		
FED. ROAD DIST. NO. _____		ILLINOIS FED. AID PROJECT		

SINGLE LANE WEAVE



MULTI-LANE WEAVE



- GENERAL NOTES**
- EXISTING CONFLICTING PAVEMENT MARKING LINES SHALL BE REMOVED OR COVERED WITH BLACK TAPE. PAVEMENT MARKING REMOVAL OR BLACK TAPE SHALL NOT BE REQUIRED FOR LANE CLOSURES UNDER 24 HOURS IN DURATION.
 - CONTINUOUS REFLECTIVE TEMPORARY PAVEMENT MARKING TAPE SHALL BE PLACED THROUGHOUT THE TAPER AND FOR 90 m (300') ALONG SIDE THE WORK AREA WHERE THE CLOSURE TIME IS GREATER THAN FOURTEEN DAYS. THE LEFT EDGE LINE SHALL BE YELLOW AND THE RIGHT EDGE LINE SHALL BE WHITE. FOR MULTI-LANE WEAVE LANE LINES SHALL BE 3 M-9 M (10'-30') SKIP DASH, WHITE.
 - PLASTIC DRUMS WITH STEADY BURN LIGHTS AT 15 m (50') C-C SPACING IN TAPERS AND 30 m (100') C-C SPACING IN TANGENTS.
 - ALL SIGNS SHALL BE POST MOUNTED IF THE CLOSURE TIME EXCEEDS FOUR DAYS.
 - IF A TYPE III BARRICADE WITH AN ATTACHED SIGN PANEL WHICH MEETS NCHRP 350 IS NOT AVAILABLE, THE SIGNS MAY BE MOUNTED ON NCHRP 350 TEMPORARY SIGN SUPPORTS DIRECTLY IN FRONT OF THE BARRICADE.

- SYMBOLS**
- ↑ DIRECTION OF TRAFFIC
 - ▨ WORK AREA
 - ┌ SIGN ON PORTABLE OR PERMANENT SUPPORT
 - ⊙ DRUM WITH MONO-DIRECTIONAL STEADY BURNING LIGHT

RIGHT LANE CLOSED
SIGNING & BARRICADING
ACCORDING TO
FREEWAY STANDARD FOR
A ONE LANE CLOSURE

REVISIONS	
NAME	DATE
DWS	2/87
DWS	1/90
DWS	12/27/94
DWS	11/96
JAF	4/03

ALL DIMENSIONS ARE IN MILLIMETERS
(INCHES) UNLESS OTHERWISE SHOWN

ILLINOIS DEPARTMENT OF TRANSPORTATION

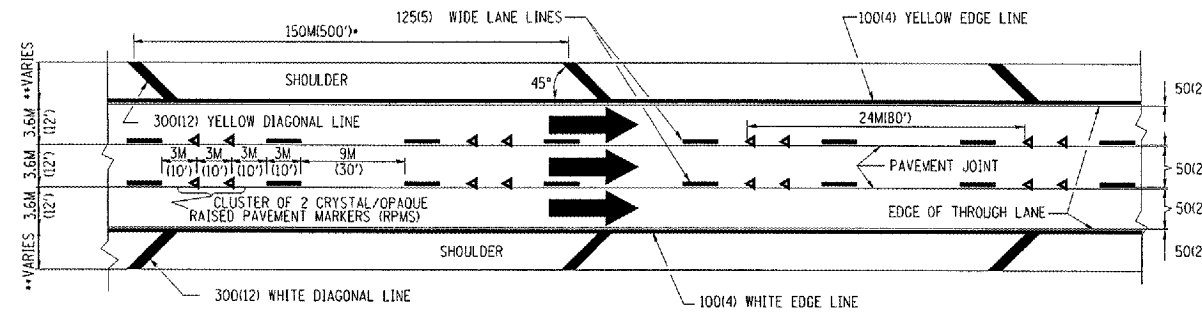
**TRAFFIC CONTROL DETAILS
FOR FREEWAY
SINGLE & MULTI-LANE WEAVE**

SCALE: NONE
DATE: 05/12/2003

DRAWN BY R.H.
CHECKED BY
TC-9

P.A.#	SECTION	COUNTY	TOTAL SHEETS	SHEET NO
342530CR-C-PP	COOK	16	14	
STA.	TO STA.			
FED. ROAD DIST. NO. 1	ILLINOIS	FED. AID PROJECT		

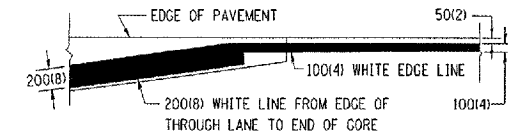
- THE DIAGONAL LINES SHALL BE SPACED AT 12M (40') C-C ACROSS ALL STRUCTURES WHICH ARE 150M (500') OR LESS IN LENGTH
- THE DIAGONAL LINES ARE NOT REQUIRED ON SHOULDERS WHICH ARE 1.8M (6') OR LESS IN WIDTH



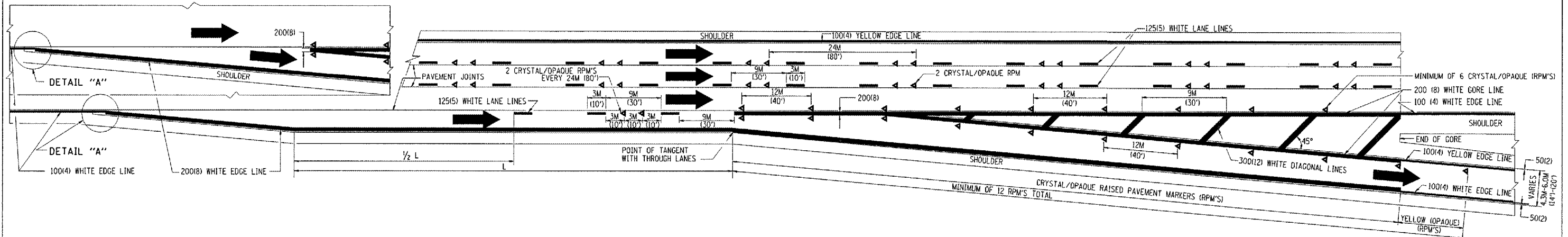
TYPICAL EDGE LINES & LANE LINES

NOTES:

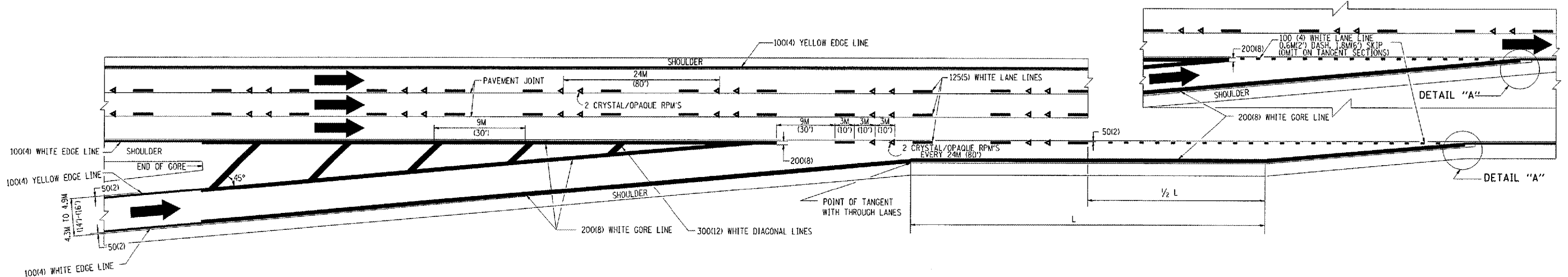
1. THERMO PLASTIC PAVEMENT MARKING LINE SHALL BE USED FOR THE EDGE LINES, GORE LINES, AND DIAGONAL LINES ON BITUMINOUS PAVEMENT ONLY.
2. PREFORMED PLASTIC PAVEMENT MARKING LINE SHALL BE USED FOR ALL LANE LINES
3. PREFORMED PLASTIC PAVEMENT MARKING LINE SHALL BE USED ON PCC PAVEMENT.



DETAIL "A"



TYPICAL EXIT RAMP PAVEMENT MARKINGS



TYPICAL ENTRANCE RAMP PAVEMENT MARKINGS

REVISIONS	
NAME	DATE
DWS	1/90
DWS	5/91
AH	3/96
DWS	7/96

ILLINOIS DEPARTMENT OF TRANSPORTATION

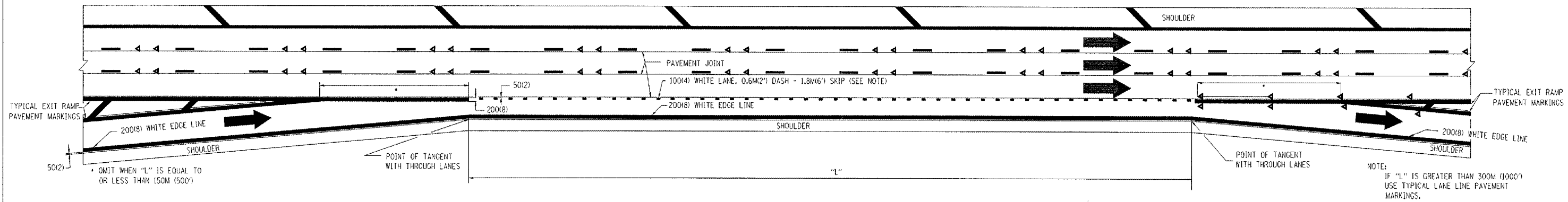
MULTI-LANE FREEWAY PAVEMENT MARKING DETAILS

SCALE: NONE
DATE: 10/18/2002

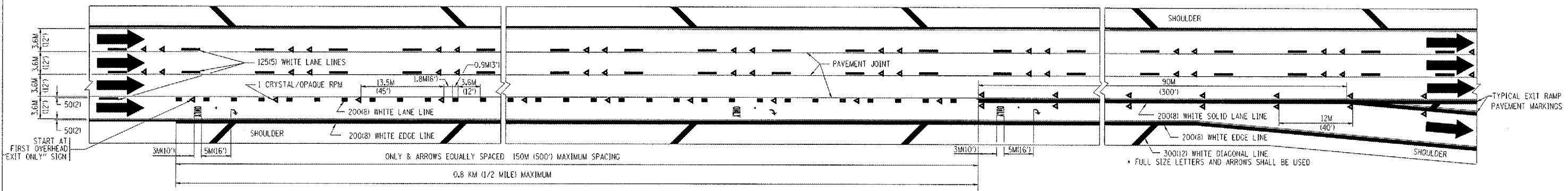
DRAWN BY C.A.D.D.
CHECKED BY

TC12 SHEET 1 OF 2
REVISION DATE: 01/01/86

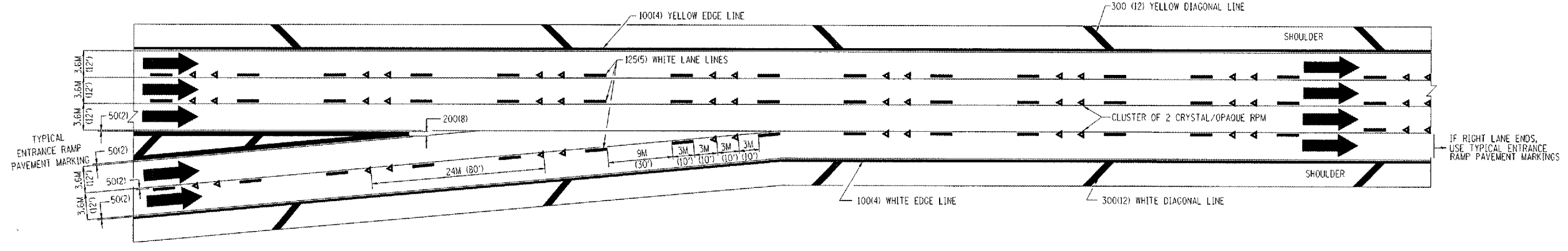
P.A.P. DIST.	SECTION	COUNTY	TOTAL SHEETS	SHEET NO.
242-500RCP-PP	COOK	16	15	
STA.	TO STA.			
FED. ROAD DIST. NO. 1	ILLINOIS	FED. AID PROJECT		



TYPICAL ENTRANCE/EXIT RAMP COMBINATION PAVEMENT MARKINGS



TYPICAL EXIT ONLY LANE PAVEMENT MARKINGS



TYPICAL TWO LANE ENTRANCE RAMP PAVEMENT MARKINGS

DATE-TIME
DGN-SPEC
VIT-02

REVISIONS	
NAME	DATE
DWS	1/90
DWS	5/91

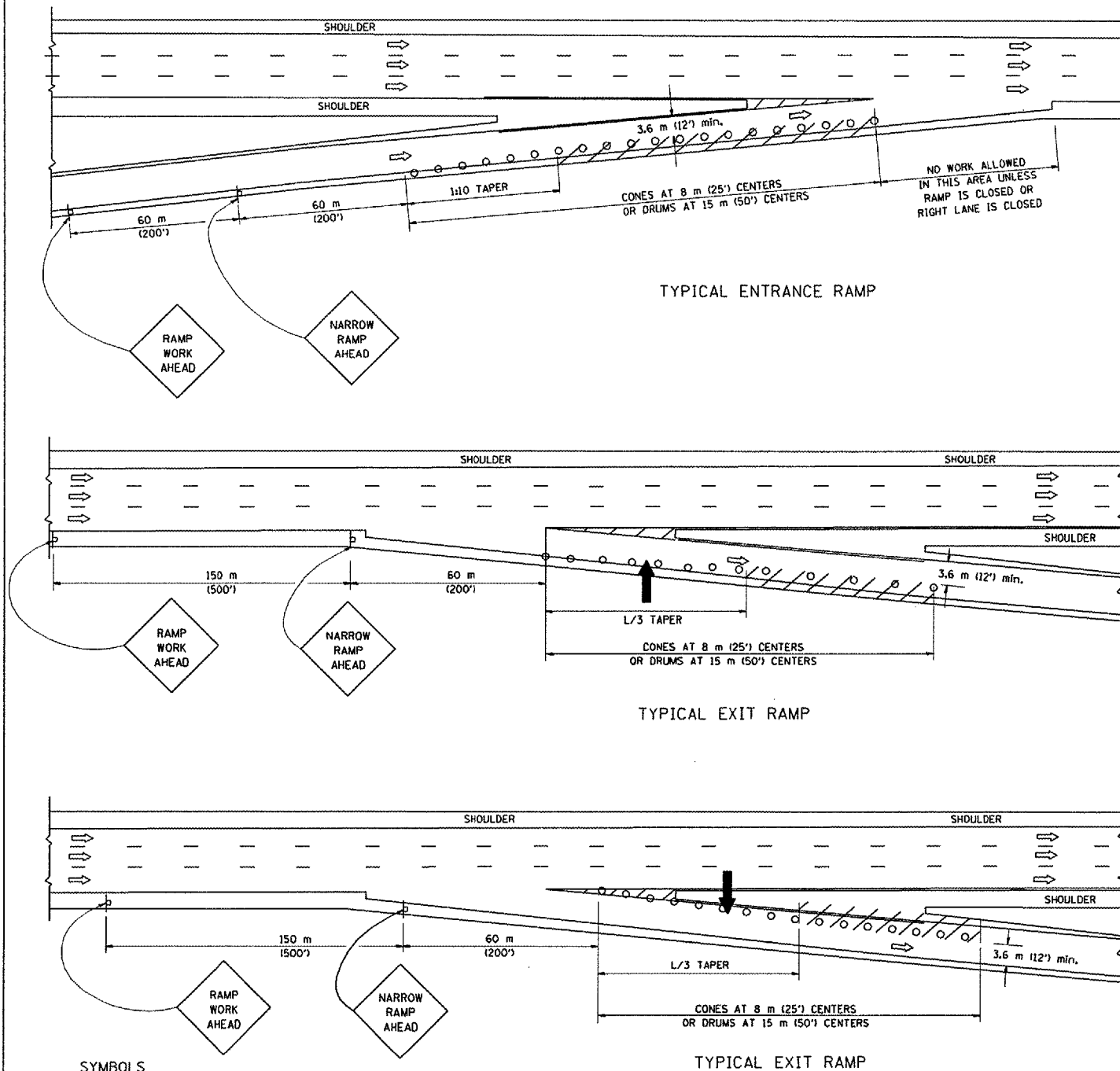
ILLINOIS DEPARTMENT OF TRANSPORTATION

MULTI-LANE FREEWAY PAVEMENT MARKING DETAILS

SCALE: NONE
DATE: 10/18/2002

DRAWN BY C.A.D.D.
CHECKED BY
TC12 SHEET 2 OF 2
REVISION DATE: 01/01/96

PARTIAL RAMP CLOSURE DETAILS



SYMBOLS

- ARROWBOARD
- WORK AREA
- SIGN ON PORTABLE OR PERMANENT SUPPORT
- FLAGGER WITH CONTROL SIGN
- DRUM WITH MONO-DIRECTIONAL STEADY BURNING LIGHT
- CONES - 700 (28) IN HEIGHT

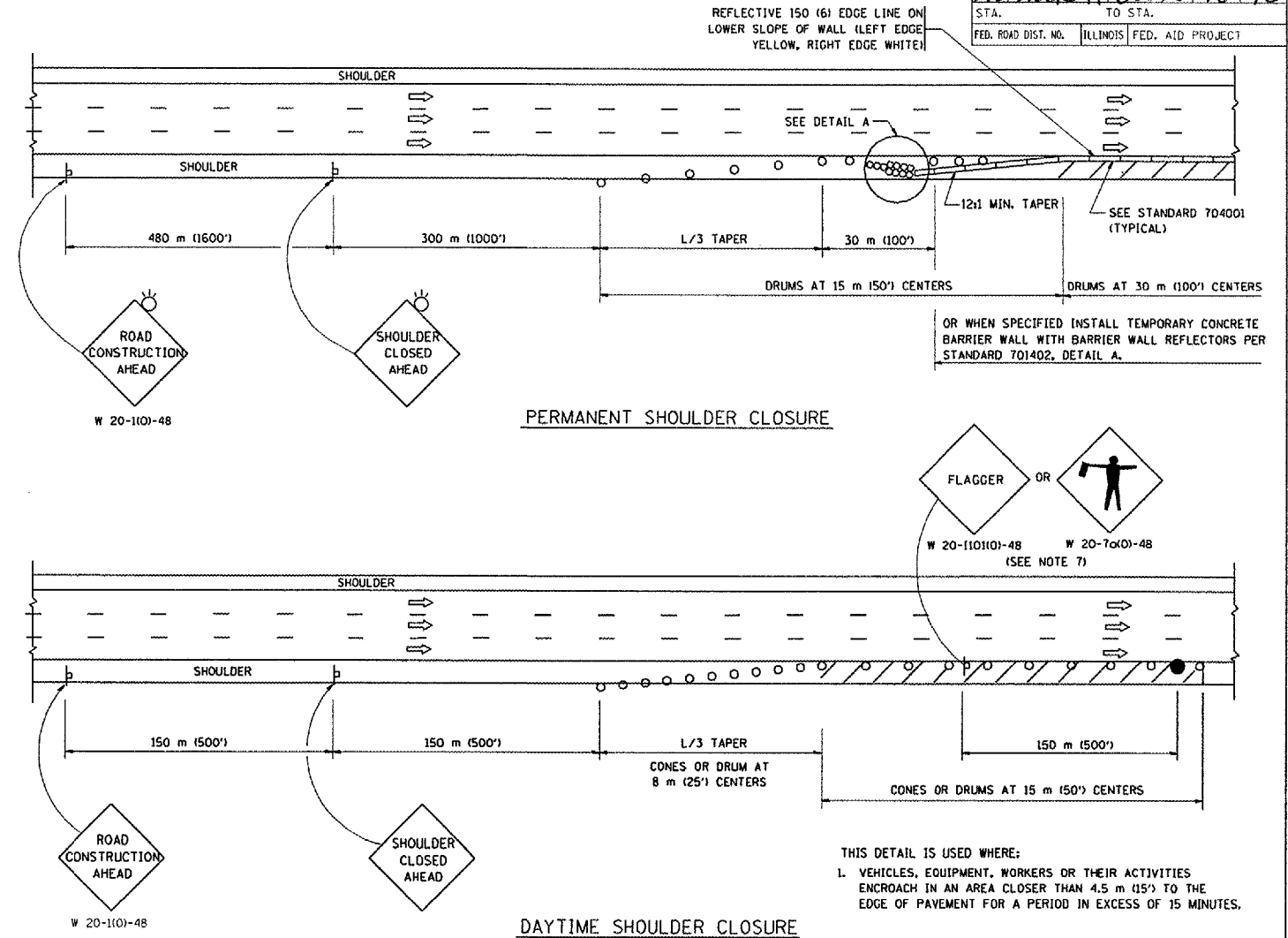
GENERAL NOTES

1. THE "L" DISTANCE EQUALS:

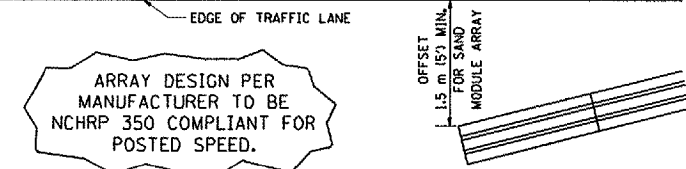
SPEED LIMIT	FORMULAS
80 km/h (45 mph)	METRIC ENGLISH
OR GREATER:	$L=0.65(W)(S)$ $L=(W)(S)$

W = WIDTH OF OFFSET IN METERS (FEET)
S = NORMAL POSTED SPEED KM/H (MPH)
2. PLASTIC DRUMS WITH HIGH PERFORMANCE REFLECTIVE SHEETING AND STEADY BURNING LIGHTS ARE REQUIRED FOR ALL NIGHTTIME CLOSURES.
3. ALL SIGNS SHALL BE POST MOUNTED IF THE CLOSURE TIME EXCEEDS FOUR DAYS.
4. FLASHING LIGHTS SHALL BE USED DURING THE HOURS OF DARKNESS AND SHALL BE INSTALLED ABOVE THE FIRST TWO SETS OF SIGNS.
5. THE IMPACT ATTENUATOR, TEMPORARY IS NOT REQUIRED WHEN THE TEMPORARY CONCRETE BARRIER WALL IS OUTSIDE THE CLEAR ZONE OR IS TIED INTO THE EXISTING GUARDRAIL. IF OFFSET IS LESS THAN 5 FEET USE "TRAFFIC BARRIER TERMINAL, TYPE III, TEMPORARY" DEVICE TO MEET NCHRP350 FOR POSTED SPEED.
6. AUTHORIZATION FROM THE DISTRICT'S BUREAU OF TRAFFIC IS REQUIRED FOR ALL FREEWAY CLOSURES.
7. THE FLAGGER AND FLAGGER SIGN ARE REQUIRED AT THE ABOVE WORK SITES WHEN:
 - a. FOUR OR MORE WORK VEHICLES ENTER THE TRAFFIC LANES IN A ONE HOUR PERIOD.
 - b. THE WORK ACTIVITY REQUIRES FREQUENT ENCROACHMENT INTO THE LANE OPEN TO TRAFFIC.
 THE FLAGGER SHALL BE STATIONED APPROXIMATELY 30 m (100') TO 60 m (200') IN ADVANCE OF THE WORKERS.

SHOULDER CLOSURE DETAILS



F.A.P. RTE.	SECTION	COUNTY	TOTAL SHEETS	SHEET NO.
342500R-PP	COOK		16	16
STA.	TO STA.			
FED. ROAD DIST. NO.	ILLINOIS	FED. AID PROJECT		



DETAIL "A"
IMPACT ATTENUATOR, TEMPORARY
(SEE NOTE 5)

ALL DIMENSIONS ARE IN MILLIMETERS (INCHES) UNLESS OTHERWISE SHOWN.
ILLINOIS DEPARTMENT OF TRANSPORTATION

REVISIONS	
NAME	DATE
DWS	11/96
JAF	12/02
NCHRP 350	04/03

TRAFFIC CONTROL DETAILS FOR FREEWAY SHOULDER CLOSURES PARTIAL RAMP CLOSURES

SCALE: NONE
DATE: 05/06/2003

DRAWN BY: DWS
DESIGNED BY: DWS
CHECKED BY: TC-17