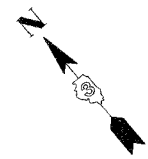
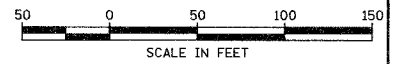


F.A.S. RTE.	SECTION	COUNTY	TOTAL SHEETS	SHEET NO.
1517	(2)RS-3 (3)RS-4	MCLEAN	223	41
STA. _____ TO STA. _____		ILLINOIS FED. AID PROJECT		
66383				



• 200' OF CURB AND GUTTER PROVIDED TO PREVENT VEHICLE ENCRoACHMENT ONTO U.S. ROUTE 150.

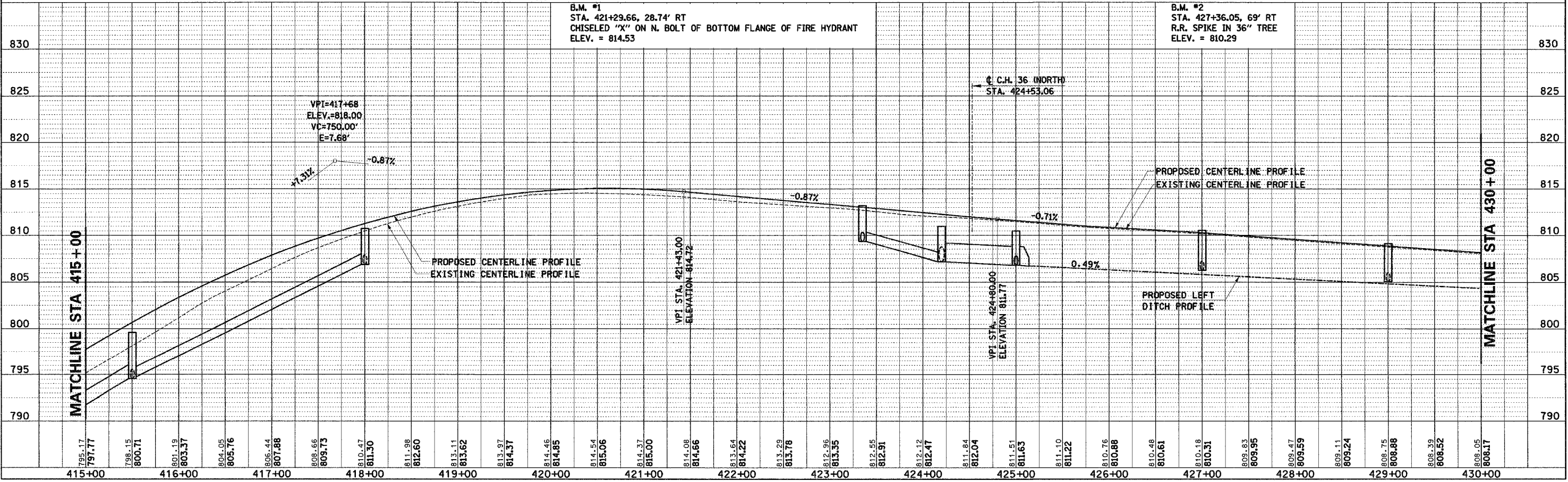
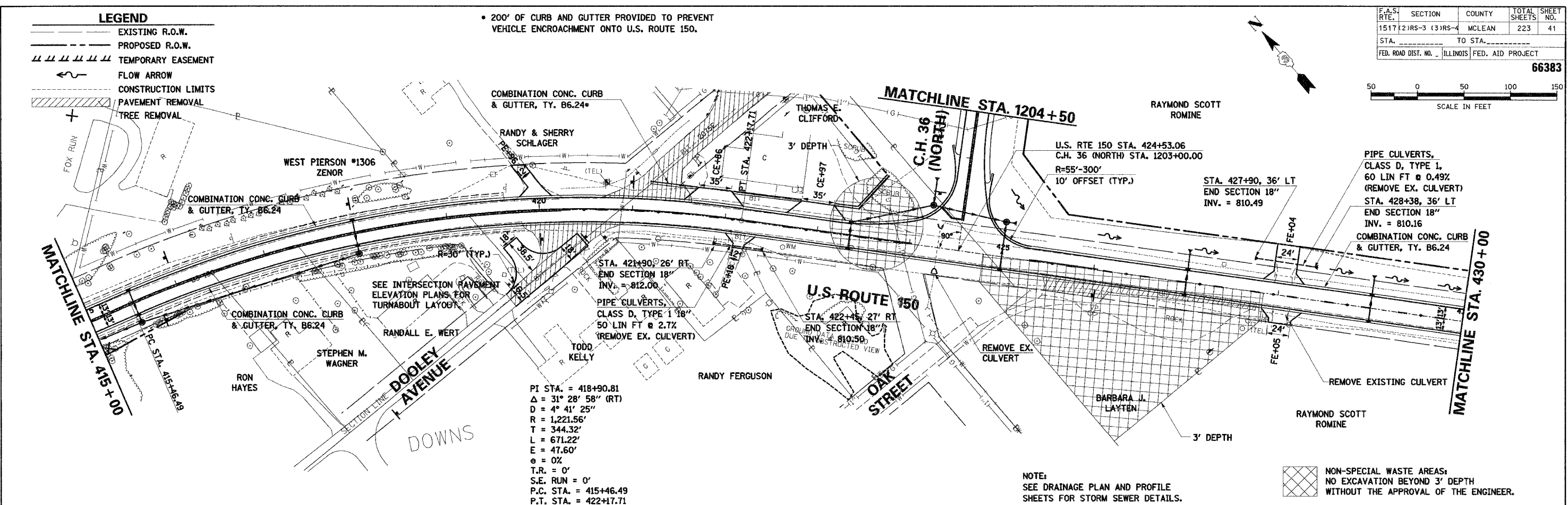
LEGEND

- EXISTING R.O.W.
- - - PROPOSED R.O.W.
- ||||| TEMPORARY EASEMENT
- FLOW ARROW
- - - CONSTRUCTION LIMITS
- ▨ PAVEMENT REMOVAL
- ⊕ TREE REMOVAL

DATE	BY
DATE	BY
DATE	BY
DATE	BY

DATE	BY
DATE	BY
DATE	BY
DATE	BY

COMPANY NAME: SEC. INC.
 PROJECT CONTACT: TONY SIMMONS
 CLIENT: IDOT
 7/14/2005 12:23:11 PM
 T:\0303\Smith\2005\0602\41\cadd\plan\cadd\1517-063\241-pln-1502.dgn



NOTE:
 SEE DRAINAGE PLAN AND PROFILE SHEETS FOR STORM SEWER DETAILS.

▨ NON-SPECIAL WASTE AREAS;
 NO EXCAVATION BEYOND 3' DEPTH WITHOUT THE APPROVAL OF THE ENGINEER.

U.S. ROUTE 150 STA. 415+00 TO STA. 430+00 - PLAN AND PROFILE

REVISED
 7-17-06
 SHEETS