

COMPANY NAME: #CONTRACT NUMBER
 PROJECT CONTACT: #PROJECT CONTACT #
 CLIENT: #CLIENT #
 DATE: #DATE #
 FILE #

PROFILE SURVEYED
 DATE
 NOTE BOOK
 NO. OF PAGES
 STRUCTURE NOTATIONS CHFD

PLAN SURVEYED
 DATE
 NOTE BOOK
 NO. OF PAGES
 ROAD FILE NAME

80% 100%
 20% 50% 100%
 TIME

CODE NUMBER	PAY ITEMS	UNIT	TOTAL QUANTITY	1000-2A	SFTY-2A
20100110	TREE REMOVAL (6 TO 15 UNITS DIAMETER)	UNIT	268	268	
20100210	TREE REMOVAL (OVER 15 UNITS DIAMETER)	UNIT	559	559	
20200100	EARTH EXCAVATION	CU YD	79371	79371	
20700110	POROUS GRANULAR EMBANKMENT	TON	1015	1015	
20800150	TRENCH BACKFILL	CU YD	892	892	
21301052	EXPLORATION TRENCH 52" DEPTH	FOOT	49500	49500	
25000100	SEEDING, CLASS 1	ACRE	7.2	7.2	
25000200	SEEDING, CLASS 2	ACRE	33.4	33.4	
25000400	NITROGEN FERTILIZER NUTRIENT	POUND	3006	3006	
25000500	PHOSPHORUS FERTILIZER NUTRIENT	POUND	3006	3006	
25000600	POTASSIUM FERTILIZER NUTRIENT	POUND	3006	3006	
25100115	MULCH, METHOD 2	ACRE	40.6	40.6	
25100830	EROSION CONTROL BLANKET	SQ YD	2348	2348	
28000250	TEMPORARY EROSION CONTROL SEEDING	POUND	20300	20300	
28000300	TEMPORARY DITCH CHECKS	EACH	286	286	
28000400	PERIMETER EROSION BARRIER	FOOT	4800	4800	
28000500	INLET AND PIPE PROTECTION	EACH	100	100	
28100907	STONE DUMPED RIPRAP, CLASS A4	TON	1101	1101	
28200200	FILTER FABRIC	SQ YD	1209	1209	
31100300	SUB-BASE GRANULAR MATERIAL, TYPE A 4"	SQ YD	12363	12363	
31102000	AGGREGATE BASE COURSE, TYPE B 8"	SQ YD	2047	2047	
40200800	AGGREGATE SURFACE COURSE, TYPE B	TON	1989	1989	
40600100	BITUMINOUS MATERIALS (PRIME COAT)	GAL	10156	10156	
40600300	AGGREGATE (PRIME COAT)	TON	188.4	188.2	0.2
40600895	CONSTRUCTING TEST STRIP	EACH	2	2	
40600980	BITUMINOUS SURFACE REMOVAL - BUTT JOINT	SQ YD	728	728	
40600990	TEMPORARY RAMP	SQ YD	114	114	
40800040	INCIDENTAL BITUMINOUS SURFACING	TON	218	218	
42300200	PORTLAND CEMENT CONCRETE DRIVEWAY PAVEMENT, 6"	SQ YD	588	588	
42300400	PORTLAND CEMENT CONCRETE DRIVEWAY PAVEMENT, 8"	SQ YD	210	210	
44000030	BITUMINOUS SURFACE REMOVAL (VARIABLE DEPTH)	SQ YD	82883	82883	76
44000100	PAVEMENT REMOVAL	SQ YD	4185	4185	
44000200	DRIVEWAY PAVEMENT REMOVAL	SQ YD	1780	1780	
44000500	COMBINATION CONCRETE CURB AND GUTTER REMOVAL	FOOT	2245	2245	
44001430	BITUMINOUS SHOULDER REMOVAL	SQ YD	12612	12598	14
44201165	CLASS D PATCHES, TYPE II, 10 INCH	SQ YD	979	979	
44201769	CLASS D PATCHES, TYPE III, 10 INCH	SQ YD	386	386	
44201771	CLASS D PATCHES, TYPE IV, 10 INCH	SQ YD	1195	1195	
48101200	AGGREGATE SHOULDERS, TYPE B	TON	11771	11759	12
48202410	BITUMINOUS SHOULDERS SUPERPAVE 6 1/2"	SQ YD	22730	22709	21
60105200	REMOVE EXISTING CULVERTS	EACH	64	64	
60800105	REINFORCEMENT BARS	POUND	5310	5310	
64001002	BOX CULVERT END SECTION, CULVERT NO. 2	EACH	2	2	
64001003	BOX CULVERT END SECTION, CULVERT NO. 3	EACH	2	2	
64001004	BOX CULVERT END SECTION, CULVERT NO. 4	EACH	2	2	
64001005	BOX CULVERT END SECTION, CULVERT NO. 5	EACH	2	2	
64001006	BOX CULVERT END SECTION, CULVERT NO. 6	EACH	2	2	
64003000	CONCRETE BOX CULVERTS	CU YD	24	24	
64010503	PRECAST CONCRETE BOX CULVERT 5' X 3'	FOOT	54.0	54.0	
64010804	PRECAST CONCRETE BOX CULVERT 9' X 4'	FOOT	102.0	102.0	
64011004	PRECAST CONCRETE BOX CULVERT 10' X 4'	FOOT	54.0	54.0	
642A0223	PIPE CULVERTS, CLASS A, TYPE 1 18"	FOOT	440	440	
642D0223	PIPE CULVERTS, CLASS D, TYPE 1 18"	FOOT	2024	2024	
642D0229	PIPE CULVERTS, CLASS D, TYPE 1 24"	FOOT	195	195	
642D0235	PIPE CULVERTS, CLASS D, TYPE 1 30"	FOOT	60	60	
642D5473	PIPE CULVERTS, CLASS D, TYPE 1 EQUIVALENT ROUND-SIZE 18"	FOOT	170	170	
642D5485	PIPE CULVERTS, CLASS D, TYPE 1 EQUIVALENT ROUND-SIZE 30"	FOOT	52	52	
64207573	PIPE CULVERTS, TYPE 1, REINFORCED CONCRETE - ARCH, EQUIVALENT ROUND - SIZE 18"	FOOT	326	326	
64207591	PIPE CULVERTS, TYPE 1, REINFORCED CONCRETE - ARCH, EQUIVALENT ROUND - SIZE 36"	FOOT	219	219	
64213453	END SECTIONS 18"	EACH	76	76	
64213459	END SECTIONS 24"	EACH	6	6	
64213465	END SECTIONS 30"	EACH	2	2	
64213657	PRECAST REINFORCED CONCRETE FLARED END SECTIONS 12"	EACH	5	5	
64213663	PRECAST REINFORCED CONCRETE FLARED END SECTIONS 18"	EACH	12	12	
64213669	PRECAST REINFORCED CONCRETE FLARED END SECTIONS 24"	EACH	2	2	
64214293	END SECTIONS, EQUIVALENT ROUND-SIZE 18"	EACH	8	8	
64214305	END SECTIONS, EQUIVALENT ROUND-SIZE 30"	EACH	2	2	

* SPECIALTY ITEM

ILLINOIS DEPARTMENT OF TRANSPORTATION
 F.A.S. 1517 (U.S. ROUTE 150)
 SUMMARY OF QUANTITIES
 (SHEET 1 OF 2)

SCALE: VERT. _____
 HORIZ. _____
 DATE _____

DRAWN BY _____
 CHECKED BY _____

F.A.S. SECTION	COUNTY	TOTAL SHEETS	SHEET NO.
1517 (2)RS-3 (3)RS-4	MCLEAN	223	4
STA. TO STA.	TO STA.		
FED. ROAD DIST. NO.	ILLINOIS	FED. AID PROJECT	

66383

REVIS
 7-17-06

COMPANY NAME: #COMPANY NAME#
 PROJECT CONTACT: #PROJECT_CONTACT#
 CLIENT: #CLIENT#
 #DATE# #TIME#
 #FILES

PROFILE SURVEYED BY DATE
 GRADES CHECKED
 NOTE BOOK #/NOTED
 #PROJECT# #NOTARY# CH#

PLAN SURVEYED BY DATE
 NOTE BOOK #/NOTED
 #PROJECT# #NOTARY# CH#

← 80% 80% STAKE →

CODE NUMBER	PAY ITEMS	UNIT	TOTAL QUANTITY	1000-2A	SFTY-2A
54214923	PRECAST REINFORCED CONCRETE FLARED END SECTIONS - ARCH, EQUIVALENT ROUND-SIZE 18"	EACH	6	6	
54214941	PRECAST REINFORCED CONCRETE FLARED END SECTIONS - ARCH, EQUIVALENT ROUND-SIZE 36"	EACH	8	8	
54247130	GRATING FOR CONCRETE FLARED END SECTION 24"	EACH	2	2	
54248160	GRATING FOR CONCRETE FLARED END SECTION EQUIVALENT ROUND-SIZE 36"	EACH	8	8	
550A0050	STORM SEWERS, CLASS A, TYPE 1, 12"	FOOT	771	771	
550A0070	STORM SEWERS, CLASS A, TYPE 1, 15"	FOOT	500	500	
550A0090	STORM SEWERS, CLASS A, TYPE 1, 18"	FOOT	688	688	
550A0120	STORM SEWERS, CLASS A, TYPE 1, 24"	FOOT	106	106	
60218400	MANHOLES, TYPE A, 4-DIAMETER, TYPE 1 FRAME, CLOSED LID	EACH	7	7	
60220230	MANHOLES, TYPE A, 4-DIAMETER, SPECIAL FRAME AND GRATE	EACH	6	6	
60235700	INLETS, TYPE A, TYPE 3 FRAME AND GRATE	EACH	2	2	
60236200	INLETS, TYPE A, TYPE 8 GRATE	EACH	2	2	
60238700	INLETS, TYPE A, WITH SPECIAL FRAME AND GRATE	EACH	12	12	
60240301	INLETS, TYPE B, TYPE 8 GRATE	EACH	1	1	
60240385	INLETS, TYPE B, WITH SPECIAL FRAME AND GRATE	EACH	10	10	
60255500	MANHOLES TO BE ADJUSTED	EACH	1	1	
60500050	REMOVING CATCH BASINS	EACH	2	2	
60500060	REMOVING INLETS	EACH	2	2	
60600005	CONCRETE CURBS, TYPE B	FOOT	200	200	
60605000	COMBINATION CONCRETE CURB AND GUTTER, TYPE B-6.24	FOOT	6858	6858	
61133100	FIELD TILE JUNCTION VAULTS, 2' DIA.	EACH	60	60	
61139800	STORM SEWERS, SPECIAL 4"	FOOT	600	600	
61139900	STORM SEWERS, SPECIAL 6"	FOOT	600	600	
61140000	STORM SEWERS, SPECIAL 8"	FOOT	600	600	
61140100	STORM SEWERS, SPECIAL 10"	FOOT	600	600	
61140200	STORM SEWERS, SPECIAL 12"	FOOT	600	600	
63000005	STEEL PLATE BEAM GUARD RAIL, TYPE B	FOOT	100	100	
63100087	TRAFFIC BARRIER TERMINAL, TYPE 6A	EACH	2	2	
63100167	TRAFFIC BARRIER TERMINAL TYPE 1, SPECIAL (TANGENT)	EACH	1	1	
63100169	TRAFFIC BARRIER TERMINAL TYPE 1, SPECIAL (FLARED)	EACH	1	1	
63200310	GUARDRAIL REMOVAL	FOOT	163	163	
64002000	NON-SPECIAL WASTE DISPOSAL	CY/D	42	42	
66000105	FURNISHING AND ERECTING RIGHT-OF-WAY MARKERS	EACH	166	166	
66000450	SPECIAL WASTE PLANS AND REPORTS	L SUM	1	1	
66700205	PERMANENT SURVEY MARKERS, TYPE 1	EACH	44	44	
66800530	SOIL DISPOSAL ANALYSIS	EACH	2	2	
67000400	ENGINEER'S FIELD OFFICE, TYPE A	CAL MO	12	12	
67100100	MOBILIZATION	L SUM	1	1	
70100450	TRAFFIC CONTROL AND PROTECTION, STANDARD 701201	L SUM	1	1	
70100460	TRAFFIC CONTROL AND PROTECTION, STANDARD 701306	L SUM	1	1	
70103815	TRAFFIC CONTROL SURVEILLANCE	CAL DA	20	20	
70300100	SHORT-TERM PAVEMENT MARKING	FOOT	10686	10686	
70300210	TEMPORARY PAVEMENT MARKING - LETTERS AND SYMBOLS	SQ FT	36	36	
70300220	TEMPORARY PAVEMENT MARKING - LINE 4"	FOOT	243843	243843	
70300240	TEMPORARY PAVEMENT MARKING - LINE 6"	FOOT	24060	24060	
70300250	TEMPORARY PAVEMENT MARKING - LINE 8"	FOOT	258	258	
70301000	WORK ZONE PAVEMENT MARKING REMOVAL	SQ FT	32430	32430	
72000100	SIGN PANEL - TYPE 1	SQ FT	372	372	
72000200	SIGN PANEL - TYPE 2	SQ FT	10	10	
72400800	RELOCATE SIGN PANEL ASSEMBLY - TYPE B	EACH	3	3	
72500100	OBJECT MARKER - TYPE 1	EACH	2	2	
73000100	WOOD SIGN SUPPORT	FOOT	1010	1010	
73502000	RELOCATE GROUND MOUNTED SIGN SUPPORT	EACH	16	16	
78000100	THERMOPLASTIC PAVEMENT MARKING - LETTERS AND SYMBOLS	SQ FT	36	36	
78000200	THERMOPLASTIC PAVEMENT MARKING - LINE 4"	FOOT	81281	81281	
78000400	THERMOPLASTIC PAVEMENT MARKING - LINE 6"	FOOT	8020	8020	
78000500	THERMOPLASTIC PAVEMENT MARKING - LINE 8"	FOOT	156	156	
78000650	THERMOPLASTIC PAVEMENT MARKING - LINE 24"	FOOT	281	281	
78100100	RAISED REFLECTIVE PAVEMENT MARKER	EACH	437	437	
78200410	GUARDRAIL MARKERS, TYPE A	EACH	10	10	
78201000	TERMINAL MARKER - DIRECT APPLIED	EACH	2	2	
78300200	RAISED REFLECTIVE PAVEMENT MARKER REMOVAL	EACH	450	450	
X3550215	BITUMINOUS BASE COURSE SUPERPAVE 5 3/4"	SQ YD	4921	4921	
X3560130	BITUMINOUS CONCRETE BASE COURSE WIDENING, SUPERPAVE 9 INCH	SQ YD	2266	2266	
X4086414	BITUMINOUS CONCRETE SURFACE COURSE, SUPERPAVE, MIX "C", N50	TON	9862	9862	
X4086814	BITUMINOUS CONCRETE BINDER COURSE, SUPERPAVE, IL-19.0, N50	TON	621	621	
X4086765	LEVELING BINDER (MACHINE METHOD), SUPERPAVE N50	TON	8274	8274	
X8083800	COMBINATION CONCRETE CURB AND GUTTER, TYPE III-4.24	FOOT	154	154	
Z0000990	AGGREGATE FOR TEMPORARY ACCESS	TON	2900	2900	
Z0064225	SEALING ABANDONED WATER WELLS	EACH	1	1	
X0325321	PRECAST CONCRETE BOX CULVERT 6' X 2.5'	FOOT	54.0	54.0	
X0325331	PRECAST CONCRETE BOX CULVERT 8' X 3.5'	FOOT	54.0	54.0	

REVISIONS
 7-17-06

ILLINOIS DEPARTMENT OF TRANSPORTATION
 F.A.S. 1517 (U.S. ROUTE 150)
 SUMMARY OF QUANTITIES
 (SHEET 2 OF 2)
 SCALE: VERT. 1"=40'
 HORIZ. 1"=40'
 DATE: 7-17-06
 DRAWN BY: []
 CHECKED BY: []

F.A.S. RTE.	SECTION	COUNTY	TOTAL SHEETS	SHEET NO.
1517	(2)RS-3 (3)RS-4	MCLEAN	223	5
STA.	TO STA.			
FED. ROAD DIST. NO.	ILLINOIS	FED. AID PROJECT		

MIX DESIGN

	SUPERPAVE BINDER	SUPERPAVE LEVEL BINDER	SUPERPAVE SURFACE	SUPERPAVE BASE COURSE	SUPERPAVE SHOULDERS
PG GRADE	PG64-22	PG64-22	PG64-22	PG64-22	PG58-22
MAX % RAP ALLOWABLE**	25%	25%	15%	25%	40%
DESIGN AIR VOIDS	4.0% @ N50	4.0% @ N50	4.0% @ N50	4.0% @ N50	2.0% @ N30
MIXTURE COMPOSITION	IL 19.0	IL 9.5	IL 12.5 OR IL 9.5	IL 19.0	BAM
FRICTION AGGREGATE			MIXTURE C		
PLANT CONTROL LIMITS	CLASS I	CLASS I	CLASS I	CLASS I	NON-CLASS I
DENSITY CONTROL METHOD	CORES/CORRELATION	•	CORRELATION	•	•

* MATERIAL SHALL BE COMPACTED TO 93-97 PERCENT OF THE MAXIMUM THEORETICAL DENSITY, EXCEPT THAT THE BOTTOM LIFT SHALL BE COMPACTED TO A MINIMUM OF 91.0 PERCENT. THE MAXIMUM THEORETICAL DENSITY SHALL BE DETERMINED FROM THE MOVING AVERAGE AS SPECIFIED IN THE QC/QA SPECIFICATION.

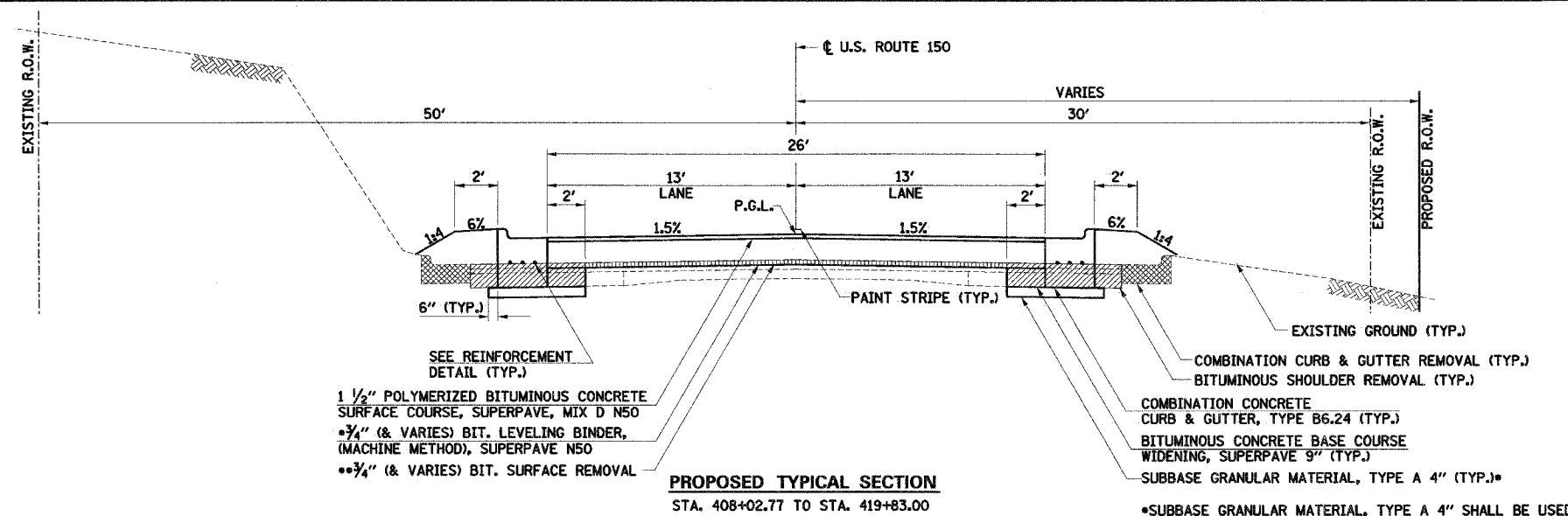
** IF MORE THAN 15 PERCENT RAP IS USED IN THE SHOULDERS, BASE COURSE AND LEVELING BINDER MIXES, THE GRADE OF ASPHALT CEMENT SHALL BE PG58-28.

NOTES:

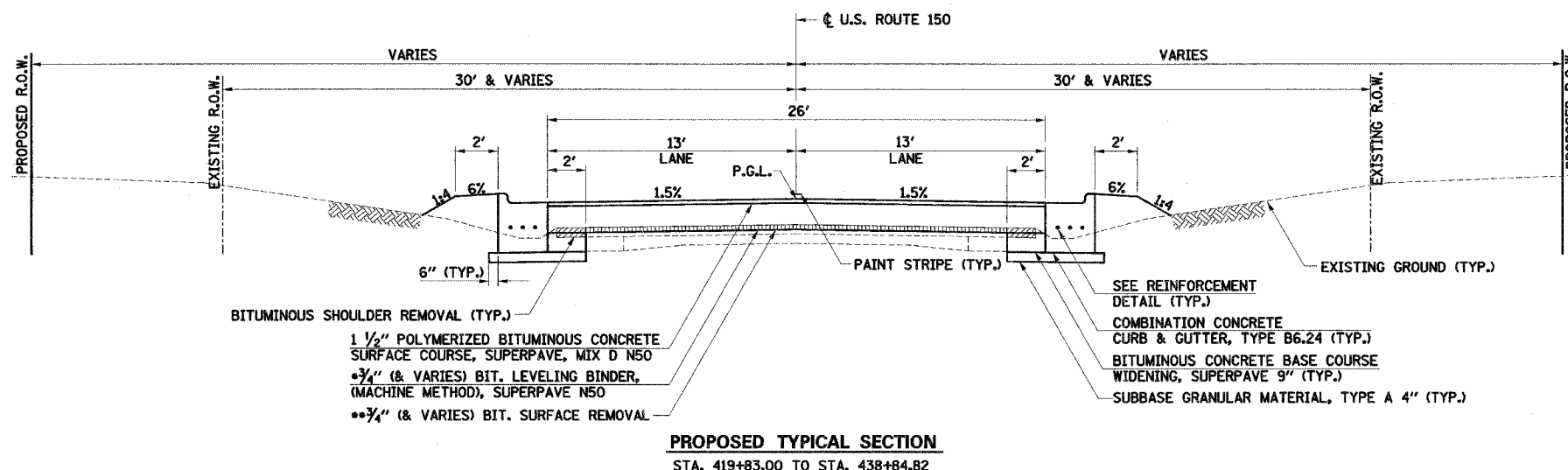
STA. 437+43.00 TO STA. 438+84.82 - SUPERELEVATION TRANSITION.
STA. 438+84.82 TO STA. 439+84.82 - LANE WIDTH TRANSITIONS FROM 13' TO 11'.

• BITUMINOUS LEVELING BINDER (MACHINE METHOD), SUPERPAVE N50 SHALL MEET THE SPECIFICATIONS OF BITUMINOUS CONCRETE BINDER COURSE, SUPERPAVE, IL-19.0, N50 WHEN LIFTS OF 2 1/4" OR MORE CAN BE PLACED. SEE SPECIAL PROVISIONS.

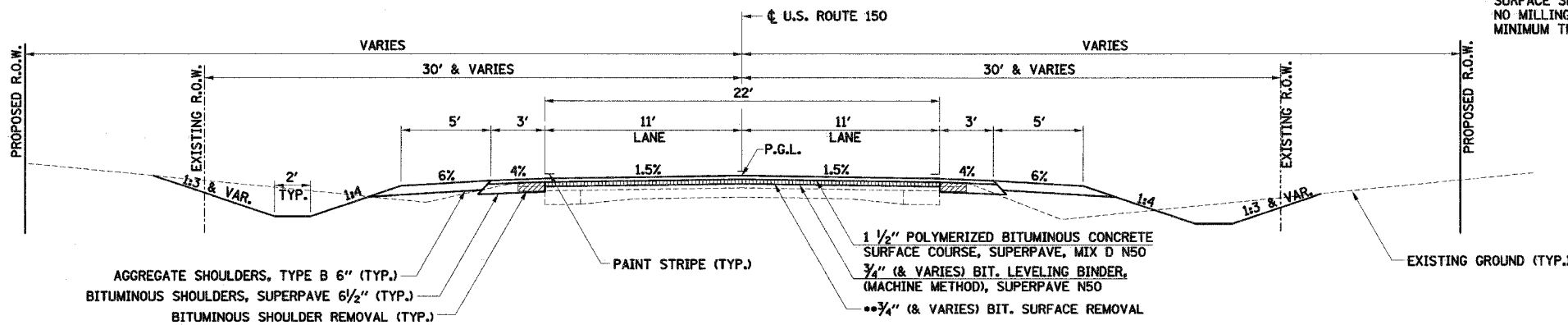
** BITUMINOUS SURFACE REMOVAL DEPTH SHALL BE 3/4" AT THE CENTERLINE. MILLED SURFACE SHALL MAINTAIN THE PROPOSED PAVEMENT CROSS-SLOPE AT THAT LOCATION. NO MILLING REQUIRED WHEN THE EXISTING CROSS-SLOPE ALLOWS FOR THE 3/4" MINIMUM THICKNESS OF LEVELING BINDER TO BE PLACED.



PROPOSED TYPICAL SECTION
STA. 408+02.77 TO STA. 419+83.00



PROPOSED TYPICAL SECTION
STA. 419+83.00 TO STA. 438+84.82



PROPOSED TYPICAL SECTION
STA. 448+86.41 TO STA. 472+60.68
STA. 482+51.13 TO STA. 490+25.44
STA. 497+45.62 TO STA. 503+72.72
STA. 512+35.04 TO STA. 524+61.64
STA. 534+41.59 TO STA. 619+14.45
STA. 629+47.77 TO STA. 639+42.70
STA. 647+06.99 TO STA. 678+82.59
STA. 688+72.06 TO STA. 706+80.30
STA. 716+85.63 TO STA. 737+22.73
STA. 745+05.09 TO STA. 755+00.00

DATE: _____
BY: _____
SURVEYED: _____
ALIGNED: _____
CHECKED: _____
PLANNED: _____
NO. _____

DATE: _____
BY: _____
SURVEYED: _____
GRADES CHECKED: _____
NOTE BOOK: _____
NO. _____

COMPANY NAME: SEC, INC.
PROJECT CONTACT: TONY SIMMONS
CLIENT: IDOT
7/11/2006 6:08:36 PM
T:\Jobs\11111\2006\00241\cadd\fr-imp\24e-tpy2.dgn

ILLINOIS DEPARTMENT OF TRANSPORTATION
F.A.S. 1517 (U.S. ROUTE 150)
PROPOSED TYPICAL SECTIONS

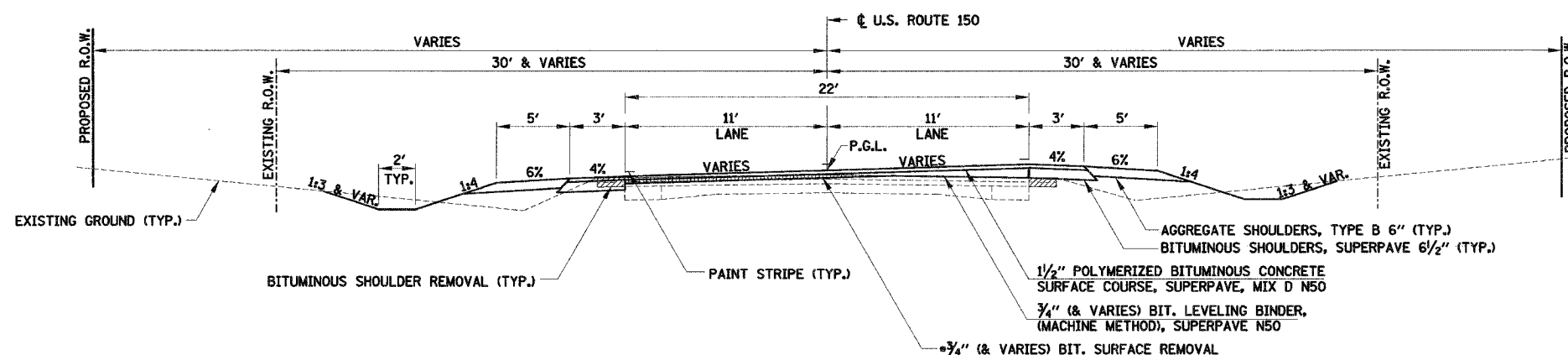
SCALE: VERT. _____
HORIZ. _____
DATE _____

DRAWN BY _____
CHECKED BY _____

REVISED
7-17-06
SHEETS

F.A.S. RTE.	SECTION	COUNTY	TOTAL SHEETS	SHEET NO.
1517	2)RS-3 (3)RS-4	MCLEAN	223	8
STA. _____ TO STA. _____				
FED. ROAD DIST. NO. - ILLINOIS FED. AID PROJECT				

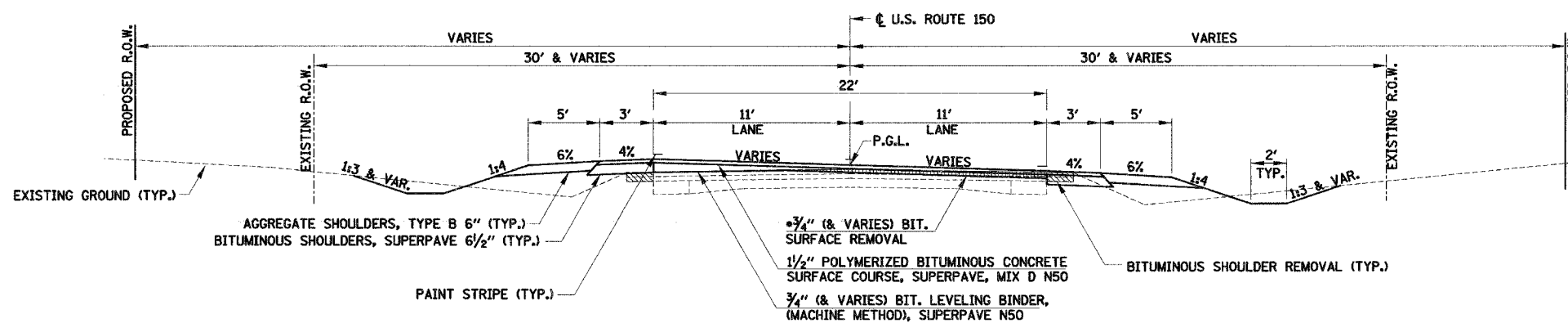
66383



PROPOSED TYPICAL SECTION

STA. 438+84.82 TO STA. 448+86.41
 STA. 490+25.44 TO STA. 497+45.62
 STA. 524+61.64 TO STA. 534+41.59
 STA. 619+14.45 TO STA. 629+47.77
 STA. 678+82.59 TO STA. 688+72.06
 STA. 737+22.73 TO STA. 745+05.09

SUPERELEVATION TRANSITIONS:
 STA. 437+43.00 TO STA. 438+84.82
 STA. 448+86.41 TO STA. 450+28.00
 STA. 489+11.00 TO STA. 490+25.44
 STA. 497+45.62 TO STA. 498+60.00
 STA. 523+12.00 TO STA. 524+61.64
 STA. 534+41.59 TO STA. 535+92.00
 STA. 618+22.00 TO STA. 619+14.45
 STA. 629+47.77 TO STA. 630+40.00
 STA. 677+65.00 TO STA. 678+82.59
 STA. 688+72.06 TO STA. 689+90.00
 STA. 735+69.00 TO STA. 737+22.73
 STA. 745+05.09 TO STA. 746+59.00



PROPOSED TYPICAL SECTION

STA. 472+60.68 TO STA. 482+51.13
 STA. 503+72.72 TO STA. 512+35.04
 STA. 639+42.70 TO STA. 647+06.99
 STA. 706+80.30 TO STA. 716+85.63

SUPERELEVATION TRANSITIONS:
 STA. 471+25.00 TO STA. 472+60.68
 STA. 482+51.13 TO STA. 483+87.00
 STA. 502+26.00 TO STA. 503+72.72
 STA. 512+35.04 TO STA. 513+82.00
 STA. 638+51.00 TO STA. 639+42.70
 STA. 647+06.99 TO STA. 647+99.00
 STA. 705+37.00 TO STA. 706+80.30
 STA. 716+85.63 TO STA. 718+29.00

• BITUMINOUS SURFACE REMOVAL DEPTH SHALL BE 3/4" AT THE CENTERLINE. MILLED SURFACE SHALL MAINTAIN THE PROPOSED PAVEMENT CROSS-SLOPE. NO MILLING SHALL BE REQUIRED WHEN THE EXISTING CROSS-SLOPE ALLOWS FOR THE 3/4" MINIMUM THICKNESS OF LEVELING BINDER TO BE PLACED.

NOTE:
 SEE SUPERELEVATION TRANSITION DETAILS FOR SUPERELEVATION RATES AND EDGE BREAKPOINT LOCATIONS.

ILLINOIS DEPARTMENT OF TRANSPORTATION
 F.A.S. 1517 (U.S. ROUTE 150)
 PROPOSED TYPICAL SECTIONS

REVISED
 7-17-06
 SHEET

SCALE: VERT.
 HORIZ.
 DATE

DRAWN BY
 CHECKED BY

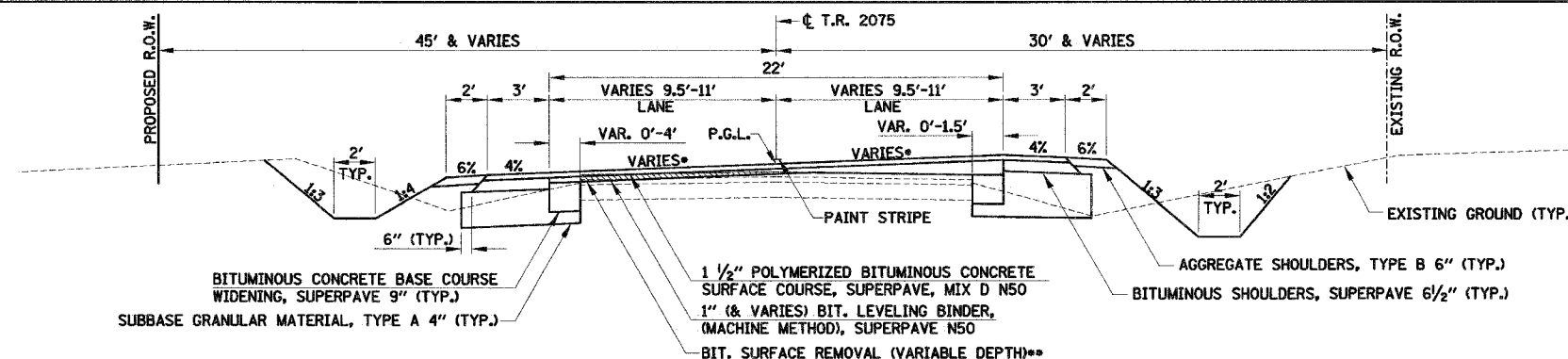
DATE	BY
PLAN	NO. _____
SURVEYED	BY _____
ALIGNED	BY _____
CHECKED	BY _____
BY NEW	DATE _____
FILE	NO. _____

DATE	BY
PROFILE	NO. _____
SURVEYED	BY _____
GRADES	BY _____
CHECKED	BY _____
BY	DATE _____
FILE	NO. _____

COMPANY NAME: SEC, INC.
 PROJECT CONTACT: TONY SIMONS
 CLIENT: DD7
 7/17/2006 6:01:02 PM
 T:\Users\simon\12000-0022\1517\1517-06\1517-06\2-11-tp5.dgn

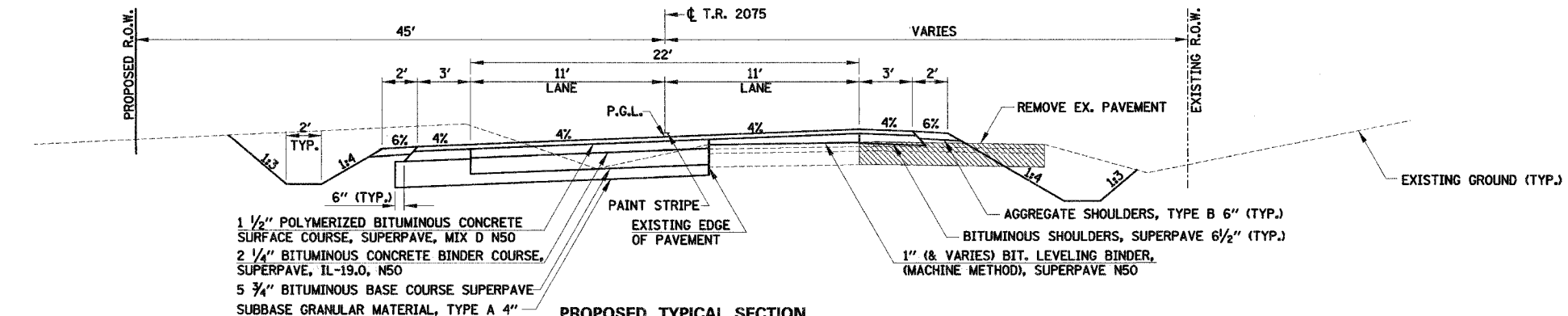
F.A.S. RTE.	SECTION	COUNTY	TOTAL SHEETS	SHEET NO.
1517	(2)RS-3 (3)RS-4	MCLEAN	223	10
STA. _____ TO STA. _____		FED. ROAD DIST. NO. _____ ILLINOIS FED. AID PROJECT		

66383

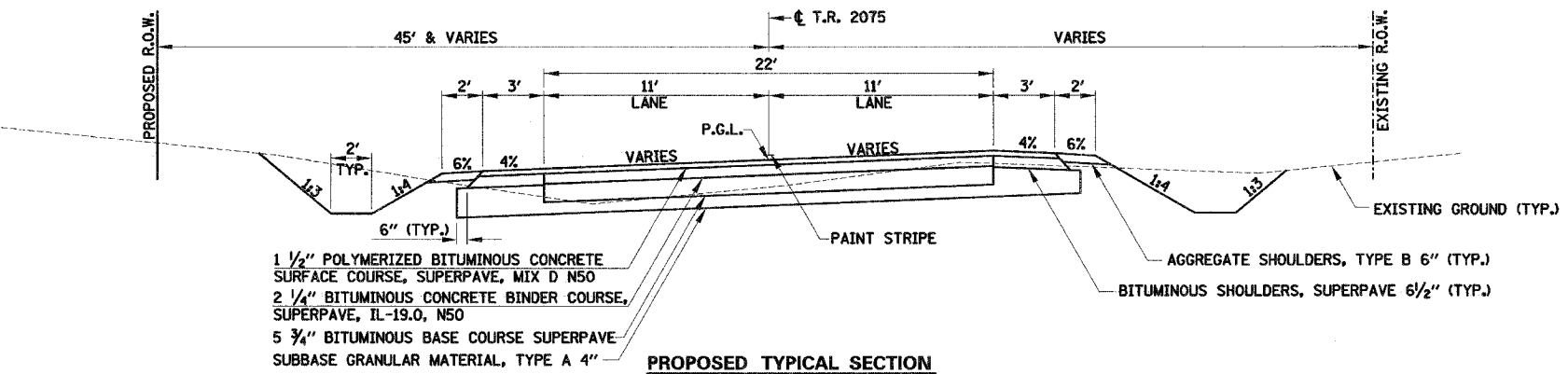


PROPOSED TYPICAL SECTION
T.R. 2075 - STA. 1300+20 TO STA. 1301+95

- NORMAL CROWN FROM STA. 1300+20 TO STA. 1300+47.
- MINIMUM LEVELING BINDER THICKNESS SHALL BE 1".

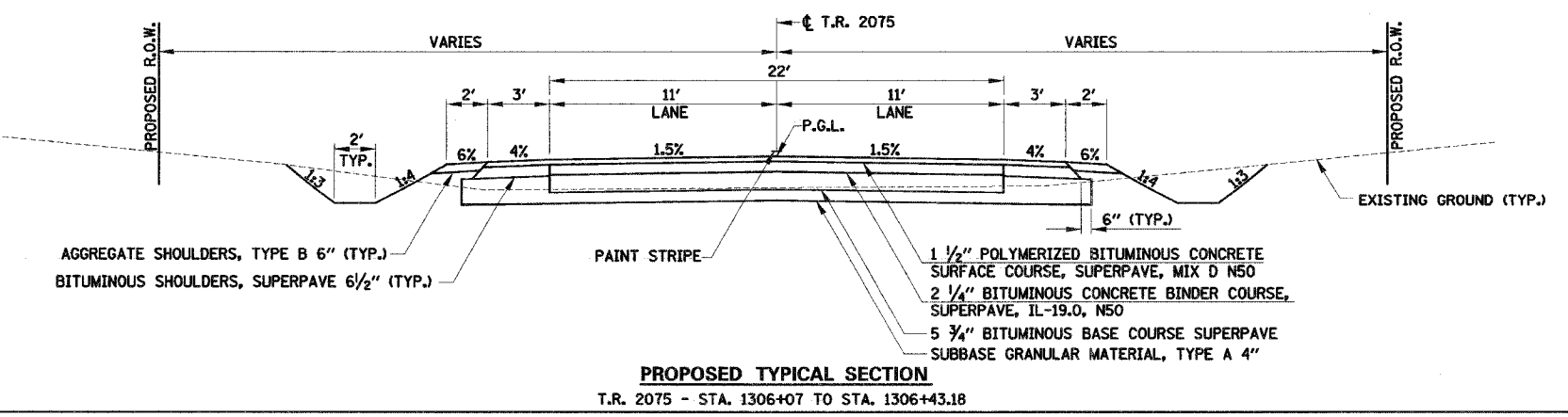


PROPOSED TYPICAL SECTION
T.R. 2075 - STA. 1301+95 TO STA. 1302+88



PROPOSED TYPICAL SECTION
T.R. 2075 - STA. 1302+88 TO STA. 1306+07

NOTE:
THE SUBBASE GRANULAR MATERIAL SHALL BE EXTENDED TO 6" BEYOND THE OUTSIDE EDGE OF THE BITUMINOUS SHOULDER AS SHOWN. THE ADDITIONAL THICKNESS OF SUBBASE GRANULAR MATERIAL BENEATH THE BITUMINOUS SHOULDER SHALL NOT BE MEASURED FOR PAYMENT.



PROPOSED TYPICAL SECTION
T.R. 2075 - STA. 1306+07 TO STA. 1306+43.18

ILLINOIS DEPARTMENT OF TRANSPORTATION
F.A.S. 1517 (U.S. ROUTE 150)
PROPOSED TYPICAL SECTIONS

REVISED
7-17-06
SHEET

SCALE: VERT. _____
HORIZ. _____
DATE _____ DRAWN BY _____
CHECKED BY _____

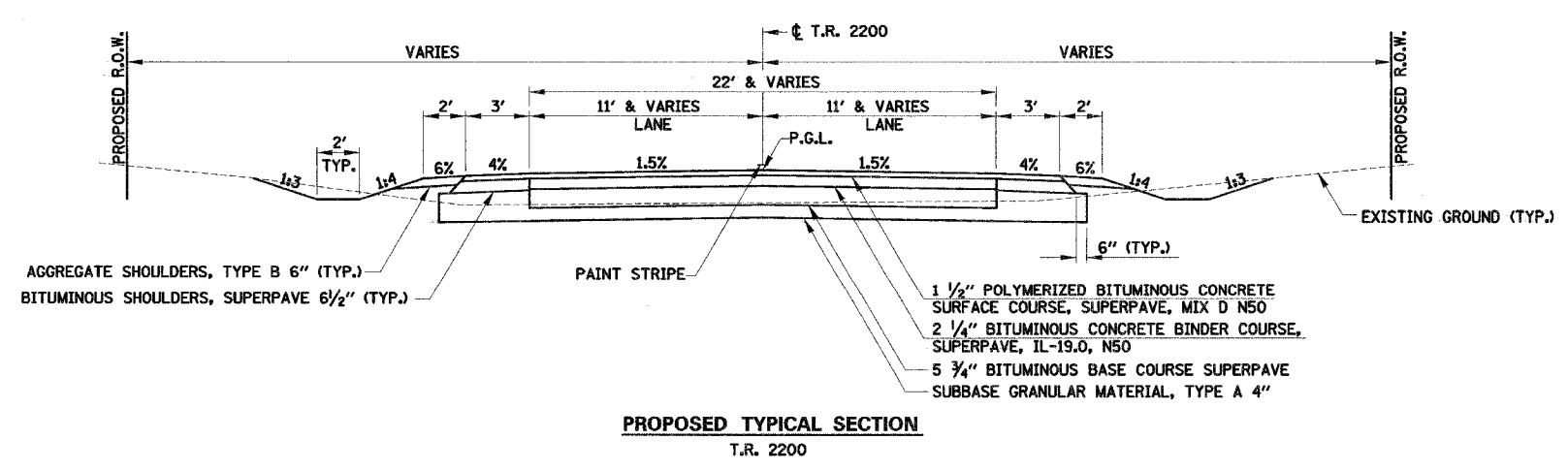
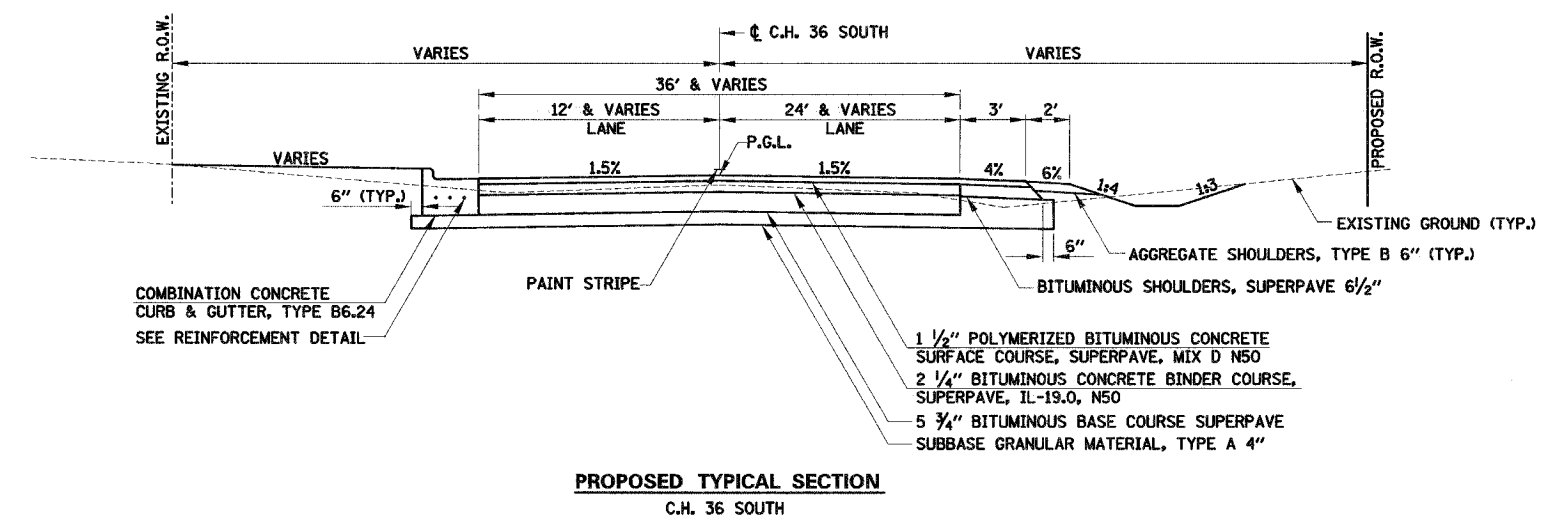
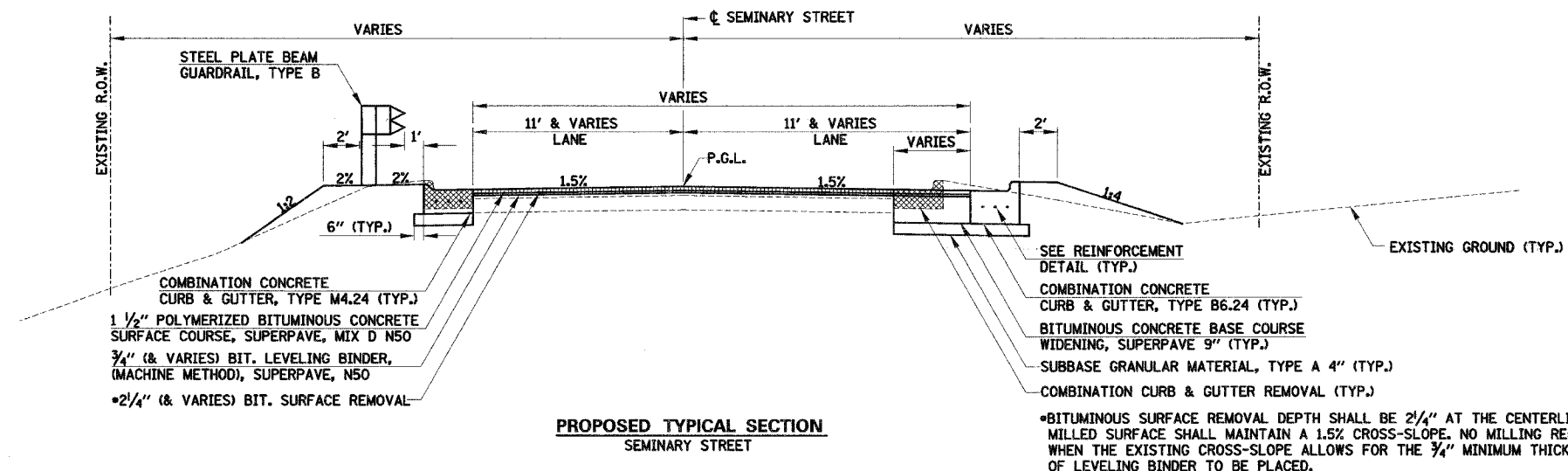
PLAN	BY	DATE
SURVEYED		
NOTE BOOK		
ALIGNED		
CHECKED		
BY P.W.A. CHECKED		
NO.		

PROFILE	BY	DATE
SURVEYED		
GRADES CHECKED		
BY J.M. NOTED		
NO.		
STRUCTURE NOTATIONS CHECKED		

COMPANY NAME: SEC. INC.
PROJECT CONTACT: TONY SIMMONS
CLIENT: IADT
7/12/2006 4:53:32 PM
F:\Users\SMITH\2005\06024\06024.dwg (11/11/06) 2:46:59 PM

F.A.S. RTE.	SECTION	COUNTY	TOTAL SHEETS	SHEET NO.
1517	(2)RS-3 (3)RS-4	MCLEAN	223	11
STA.	TO STA.			
FED. ROAD DIST. NO. ILLINOIS FED. AID PROJECT				

66383



NOTE:
THE SUBBASE GRANULAR MATERIAL SHALL BE EXTENDED TO 6" BEYOND THE OUTSIDE EDGE OF THE BITUMINOUS SHOULDER AS SHOWN. THE ADDITIONAL THICKNESS OF SUBBASE GRANULAR MATERIAL BENEATH THE BITUMINOUS SHOULDER SHALL NOT BE MEASURED FOR PAYMENT.

ILLINOIS DEPARTMENT OF TRANSPORTATION
F.A.S. 1517 (U.S. ROUTE 150)
PROPOSED TYPICAL SECTIONS

SCALE: VERT. _____
HORIZ. _____
DATE _____

DRAWN BY _____
CHECKED BY _____

REVISED
1-17-06
SHEETS

PLAN	SURVEYED	DATE
NOTE BOOK	ALIGNED	
NO.	CHECKED	
	BY	
	DATE	

PROFILE	SURVEYED	DATE
NOTE BOOK	GRADES CHECKED	
NO.	BY	
	DATE	
	BY	
	DATE	

COMPANY NAME: SEC, INC.
PROJECT CONTACT: TONY SIMMONS
CLIENT: IDOT
7/12/2006 10:42 AM
F:\9808\SMITH\2200\00024\cck\tr-enc\24-typ6.dgn

F.A.S. RTE.	SECTION	COUNTY	TOTAL SHEETS	SHEET NO.
1517	(2)RS-3 (3)RS-4	MCLEAN	223	24
STA.	TO STA.			
FED. ROAD DIST. NO.	ILLINOIS	FED. AID PROJECT		

66383

LOCATION	SUBBASE * GRANULAR MAT. TYPE A, 4" (SQ YD)	AGGREGATE BASE COURSE TYPE B, 8" (SQ YD)	AGGREGATE SURFACE COURSE TYPE B (TON)	AGGREGATE FOR TEMPORARY ACCESS (TON)	BITUMINOUS MATERIALS (PRIME COAT) (GAL)	AGGREGATE (PRIME COAT) (TON)	BITUMINOUS SURFACE REM. (VAR. DEPTH) (SQ YD)	BITUMINOUS SURFACE REM. BUTT JOINT (SQ YD)	TEMPORARY RAMP (SQ YD)	PCC DRIVEWAY PAVEMENT 6" (SQ YD)	PCC DRIVEWAY PAVEMENT 8" (SQ YD)	INCIDENTAL BITUMINOUS SURFACING (TON)	PAVEMENT REMOVAL (SQ YD)	DRIVEWAY PAVEMENT REMOVAL (SQ YD)
U.S. ROUTE 150														
408+02.77 TO 419+83.00	1543				231	5.8	1179	147	29					
419+83.00 TO 438+84.82	2159				372	9.3	3606							
438+84.82 TO 449+81.00					215	5.4	2680							
449+81.00 TO 471+70.00					429	10.8	5351							
471+70.00 TO 483+42.00					230	5.8	2865							
483+42.00 TO 489+48.00					119	3.0	1482							
489+48.00 TO 498+23.00					172	4.3	2139							
498+23.00 TO 502+75.00					89	2.3	1105							
502+75.00 TO 513+33.00					207	5.2	2587							
513+33.00 TO 523+63.00					202	5.1	2518							
523+63.00 TO 535+41.00					231	5.8	2880							
535+41.00 TO 618+52.00					1626	40.7	20316							
618+52.00 TO 630+10.00					227	5.7	2831							
630+10.00 TO 638+81.00					171	4.3	2130							
638+81.00 TO 647+69.00					174	4.4	2171							
647+69.00 TO 678+04.00					594	14.9	7419							
678+04.00 TO 689+51.00					225	5.7	2804							
689+51.00 TO 705+84.00					320	8.0	3992							
705+84.00 TO 717+82.00					235	5.9	2929							
717+82.00 TO 736+20.00					360	9.0	4493							
736+20.00 TO 746+08.00					194	4.9	2416							
746+08.00 TO 754+51.18					165	4.2	2062	147	25					
SUBTOTAL	3702	0	0	0	6788	170.5	81955	294	54	0	0	0	0	0
SEMINARY STREET														
1100+00.00 TO 1101+31.14	49				47	1.2	576							
DOOLEY AVENUE		348			131	0.7						35.6	418	
OAK STREET													283	
C.H. 36 NORTH														
1203+00.00 TO 1210+00.00	1715				798	4.3		123	13				1610	
T.R. 2075														
1300+20.00 TO 1306+43.18	1357				734	3.9	428		18				500	
C.H. 36 SOUTH														
1500+00.00 TO 1502+56.21	1205				417	2.3							733	
T.R. 2200														
1601+00.00 TO 1602+98.36	886				285	1.6							571	
T.R. 2325														
1700+00.00 TO 1702+50.00	576				34	0.9		89	9					
T.R. 2375														
1800+50.00 TO 1802+39.72	355				34	0.9		116	9					
T.R. 2400														
1900+00.00 TO 1901+50.00	282				31	0.8		106	11					
T.R. 2450														
2400+50.00 TO 2402+32.08	756				239	1.3							70	
SUBTOTAL - SIDEROADS	7181	348	0	0	2750	17.9	1004	434	60	0	0	35.6	4185	0
DRIVEWAYS														
SUBTOTAL**	0	1699	1989.0	2905.7	618	0	0	0	0	588	210	182.1	0	1780
TOTAL	10883	2047	1989.0	2905.7	10156	188.4	82959	726	114	588	210	217.7	4185	1780

* PAVEMENT PATCHING AND ASSOCIATED SUBBASE GRANULAR MATERIAL TYPE A, 4" NOT INCLUDED. SEE PATCHING SCHEDULE FOR QUANTITIES AND LOCATIONS.
 ** SEE DRIVEWAY SCHEDULE FOR INDIVIDUAL DRIVEWAY QUANTITIES.

PLAN
 SURVEYED
 ALIGNED
 CHECKED
 BY: _____
 DATE: _____
 NO. _____

PROFILE
 SURVEYED
 GRADES
 CHECKED
 BY: _____
 DATE: _____
 NO. _____

COMPANY NAME: SEC, INC.
 PROJECT CONTACT: TONY SIMMONS
 CLIENT: DOT
 7/14/2006 9:55:00 AM
 F:\Jobs\Smith\2006\0002\01\cadd\11-dwg\11-dwg\24-pave.dgn

ILLINOIS DEPARTMENT OF TRANSPORTATION
F.A.S. 1517 (U.S. ROUTE 150)
PAVEMENT SCHEDULE
(SHEET 1 OF 2)

SCALE: VERT. _____
 HORIZ. _____
 DATE _____

DRAWN BY _____
 CHECKED BY _____

REVISED
 7-17-06
 SHEETS

F.A.S. RTE.	SECTION	COUNTY	TOTAL SHEETS	SHEET NO.
1517	2)RS-3 (3)RS-4	MCLEAN	223	25
STA.		TO STA.		
FED. ROAD DIST. NO.		ILLINOIS FED. AID PROJECT		

66383

LOCATION	COMBINATION CONCRETE CURB AND GUTTER REMOVAL (FOOT)		BITUMINOUS SHOULDER REMOVAL (SQ YD)		AGGREGATE SHOULDERS TYPE B (TON)		BITUMINOUS SHOULDERS SUPERPAVE 6 1/2" (SQ YD)		COMBINATION CONCRETE CURB AND GUTTER TYPE B6.24 (FOOT)		COMBINATION CONCRETE CURB AND GUTTER TYPE M4.24 (FOOT)		BITUMINOUS CONCRETE BASE COURSE WIDENING SUPERPAVE 9" (SQ YD)		BITUMINOUS BASE COURSE SUPERPAVE 5 3/4" (SQ YD)	BITUMINOUS CONCRETE SURFACE COURSE SUPERPAVE MIX "C", N50 (TON)	BITUMINOUS CONCRETE BINDER COURSE SUPERPAVE IL-19.0, N50 (TON)	LEVELING BINDER (MACH. METHOD) SUPERPAVE N50 (TON)
	LEFT	RIGHT	LEFT	RIGHT	LEFT	RIGHT	LEFT	RIGHT	LEFT	RIGHT	LEFT	RIGHT	LEFT	RIGHT				
U.S. ROUTE 150																		
408+02.77 TO 419+83.00	1060	1185	858	700			143	25	1062	1108	26	128	263	263		300.6		1800.6
419+83.00 TO 438+84.82			419	95					2194	2144			435	434		461.6		625.4
438+84.82 TO 449+81.00			183	183	201.7	135.3	357	382								287.0		281.7
449+81.00 TO 471+70.00			365	365	406.3	406.0	730	730								572.1		261.4
471+70.00 TO 483+42.00			196	196	214.3	212.2	393	390								306.3		185.8
483+42.00 TO 489+48.00			101	101	115.1	115.1	202	202								158.4		66.0
489+48.00 TO 498+23.00			146	146	156.5	166.6	292	293								228.7		157.9
498+23.00 TO 502+75.00			76	76	85.8	79.5	151	151								118.2		55.2
502+75.00 TO 513+33.00			177	177	192.8	142.8	355	372								282.6		172.1
513+33.00 TO 523+63.00			172	172	195.6	195.6	344	344								269.2		111.9
523+63.00 TO 535+41.00			197	197	222.2	217.5	391	395								307.9		220.5
535+41.00 TO 618+52.00			1386	1386	1476.8	1523.5	2771	2772								2178.0		1265.7
618+52.00 TO 630+10.00			193	193	211.7	175.3	386	409								308.7		282.7
630+10.00 TO 638+81.00			146	146	165.4	165.4	291	291								227.7		110.6
638+81.00 TO 647+69.00			148	148	123.9	64.1	319	632		550						263.8		216.6
647+69.00 TO 678+04.00			506	506	565.2	554.2	1013	1013								793.2		457.0
678+04.00 TO 689+51.00			192	192	207.9	173.2	382	405								305.8		246.8
689+51.00 TO 705+84.00			273	273	275.9	293.9	545	545								426.8		179.8
705+84.00 TO 717+82.00			200	200	219.5	226.2	402	398								313.1		180.9
717+82.00 TO 736+20.00			307	307	349.0	330.4	613	613								480.4		205.2
736+20.00 TO 746+08.00			165	165	176.2	189.7	327	333								258.2		212.1
746+08.00 TO 754+51.18			141	141	150.9	150.6	282	282								220.4		94.9
SUBTOTAL	1060	1185	6547	6065	5712.7	5517.1	10689	10977	3256	3802	26	128	698	697	0	9068.7	0	7390.8
SEMINARY STREET																		
1100+00.00 TO 1101+31.14																69	54.2	52.0
DOOLEY AVENUE																		
OAK STREET																		
C.H. 36 NORTH																		
1203+00.00 TO 1210+00.00					139.3	139.5							16	6	1525	179.1	192.2	136.2
T.R. 2075																		
1300+20.00 TO 1306+43.18					43.6	45.1	192	197					34	28	1000	160.7	126.0	80.2
C.H. 36 SOUTH																		
1500+00.00 TO 1502+56.21						13.9		61							1052	93.5	132.6	
T.R. 2200																		
1601+00.00 TO 1602+98.36					15.4	13.6	67	58							732	67.6	92.3	
T.R. 2325																		
1700+00.00 TO 1702+50.00					17.5	15.6	75	82					263	104		75.0		323.8
T.R. 2375																		
1800+50.00 TO 1802+39.72					14.7	13.9	63	59					63	133		57.4		192.9
T.R. 2400																		
1900+00.00 TO 1901+50.00					6.8	11.6	45	50					100	55		46.9		97.8
T.R. 2450																		
2400+50.00 TO 2402+32.08					14.0	13.0	60	55							612	56.9	77.2	
SUBTOTAL - SIDEROADS	0	0	0	0	251.3	266.2	502	562	0	0	0	0	476	395	4921	793.3	620.3	882.9
DRIVEWAYS																		
SUBTOTAL**	0	0	0	0		22.9	0	0	0	0	0	0	0	0	0	0	0	0
TOTAL	2245		12612		11770.2		22730		7058		154		2266		4921	9862.0	620.3	8273.7

* PAVEMENT PATCHING AND ASSOCIATED SUBBASE GRANULAR MATERIAL TYPE A, 4" NOT INCLUDED. SEE PATCHING SCHEDULE FOR QUANTITIES AND LOCATIONS.
 ** SEE DRIVEWAY SCHEDULE FOR INDIVIDUAL DRIVEWAY QUANTITIES.

PLAN
 SURVEYED BY: _____ DATE: _____
 CHECKED BY: _____
 ALIGNED BY: _____
 ADJUSTED BY: _____
 PLOTTED BY: _____
 FILE NAME: _____

PROFILE
 SURVEYED BY: _____ DATE: _____
 CHECKED BY: _____
 GRADES CHECKED BY: _____
 STRUCTURE NOTATIONS CHECKED BY: _____

COMPANY NAME: SEC. INC.
 PROJECT CONTACT: TONY SIMMONS
 CLIENT: DOT
 7/14/2006 9:55:03 AM
 F:\roads\smitty\2006\0024\sheet\1517-06\24_shev02.dgn

ILLINOIS DEPARTMENT OF TRANSPORTATION
F.A.S. 1517 (U.S. ROUTE 150)
PAVEMENT SCHEDULE
(SHEET 2 OF 2)

SCALE: VERT. _____
 HORIZ. _____
 DATE _____

DRAWN BY _____
 CHECKED BY _____

REVISED
 7-17-06
 SHEETS

PLAN
 SURVEYED BY: _____ DATE: _____
 NOTE BOOK NO. _____
 ALLOTTMENT CHECKED BY: _____
 ROAD FILE NAME: _____

PROFILE
 SURVEYED BY: _____ DATE: _____
 GRADES CHECKED BY: _____
 NOTE BOOK NO. _____
 PROFILE NUMBER: _____

COMPANY NAME: SEC. INC.
 PROJECT CONTACT: TONY SIMMONS
 CLIENT: IDOT
 7/14/2005 8:22:41 AM
 T:\Jobs\SMITH\2005\00224\cadd\111-cre\3.241.pct.ctb:cp1

LOCATION	DESCRIPTION	SUBBASE GRANULAR MAT. TYPE A, 4" (SQ YD)		CLASS D PATCHES, 10 INCH							
		LEFT	RIGHT	TYPE II (SQ YD)		TYPE III (SQ YD)		TYPE IV (SQ YD)			
				LEFT	RIGHT	LEFT	RIGHT	LEFT	RIGHT		
U.S. ROUTE 150											
410+50.00	STORM SEWER	24.7	24.7			24.7	24.7				
412+77.97	PATCH				8.7						
413+00.00	STORM SEWER	24.5	24.5			24.5	24.5				
413+30.77	PATCH				8.7						
414+36.37	PATCH				8.7						
415+50.00	STORM SEWER	24.5	24.5			24.5	24.5				
416+47.57	PATCH			8.7							
418+00.00	STORM SEWER	24.5	24.5			24.5	24.5				
419+11.57	PATCH			8.7							
421+22.77	PATCH				8.7						
421+75.57	PATCH			8.7							
423+00.00	STORM SEWER	24	24			24.0	24.0				
424+30.00	CULVERT REM.	30.8	30.8					30.8	30.8		
425+00.00	STORM SEWER	26.4	26.4					26.4	26.4		
426+50.77	PATCH			8.7							
427+00.00	STORM SEWER	25.2	25.2					25.2	25.2		
429+00.00	STORM SEWER	25	25					25.0	25.0		
429+67.57	PATCH			8.7							
431+00.00	STORM SEWER	24.5	24.5			24.5	24.5				
431+78.77	PATCH				8.7						
433+00.00	STORM SEWER	24.5	24.5			24.5	24.5				
434+42.77	PATCH				8.7						
435+00.00	STORM SEWER	25.2	25.2					25.2	25.2		
437+00.00	STORM SEWER	25.8	25.8					25.8	25.8		
437+59.57	PATCH			8.7							
442+60.00	CULVERT REM. & REPL.	68.7	52.8					68.7	52.8		
443+40.37	PATCH			8.7							
448+68.37	PATCH			8.7							
452+37.97	PATCH			11.6							
460+82.77	PATCH				8.7						
461+35.57	PATCH				8.7						
462+41.17	PATCH				8.7						
469+27.57	PATCH			8.7							
469+80.37	PATCH			8.7							
472+44.37	PATCH				8.7						
475+61.17	PATCH			8.7							
476+00.00	CULVERT REM. & REPL.	33.3	33.3					33.3	33.3		
481+41.97	PATCH				8.7						
484+58.77	PATCH				8.7						
492+50.77	PATCH				8.7						
501+04.00	CULVERT REM. & REPL.	31	31					31.0	31.0		
515+21.17	PATCH				8.7						
516+79.57	PATCH			11.6							
523+65.97	PATCH				14.4						
527+88.37	PATCH			10.1							
531+57.97	PATCH			11.6							
532+69.00	CULVERT REM. & REPL.	39.6	39.6					39.6	39.6		
534+74.77	PATCH				8.7						
535+80.37	PATCH				8.7						
537+38.77	PATCH				8.7						
547+94.77	PATCH				8.7						
553+22.77	PATCH				11.6						
558+50.77	PATCH				14.4						
560+42.00	CULVERT REM. & REPL.	28	28					28.0	28.0		
566+42.77	PATCH				11.6						
567+48.37	PATCH				11.6						
585+43.57	PATCH			8.7							
587+54.77	PATCH				8.7						
592+00.00	CULVERT REM. & REPL.	39.6	39.6					39.6	39.6		
595+99.57	PATCH					21.7					
603+38.77	PATCH				8.7						
611+30.77	PATCH			8.7							
613+34.00	FIELD TILE	30.6	30.6					30.6	30.6		

LOCATION	DESCRIPTION	SUBBASE GRANULAR MAT. TYPE A, 4" (SQ YD)		CLASS D PATCHES, 10 INCH							
		LEFT	RIGHT	TYPE II (SQ YD)		TYPE III (SQ YD)		TYPE IV (SQ YD)			
				LEFT	RIGHT	LEFT	RIGHT	LEFT	RIGHT		
613+94.77	PATCH										
623+97.97	PATCH									21.7	28.9
627+93.00	CULVERT REM. & REPL.	30.5	30.5							30.5	30.5
629+25.97	PATCH				8.7						
635+06.77	PATCH				11.6						
635+59.57	PATCH			11.6							
656+18.77	PATCH				8.7						
656+71.57	PATCH				11.6						
662+34.00	CULVERT REM. & REPL.	32.1	32.1							32.1	32.1
664+01.77	PATCH				8.7						
664+63.57	PATCH				8.7						
665+16.37	PATCH				8.7						
667+27.57	PATCH				8.7						
668+33.17	PATCH				8.7						
671+49.97	PATCH					11.6					
672+02.77	PATCH					11.6					
674+66.77	PATCH				8.7						
675+72.37	PATCH				11.6						
677+83.57	PATCH				11.6						
680+47.57	PATCH				8.7						
685+75.57	PATCH									28.9	
691+03.57	PATCH				8.7						
692+61.97	PATCH					14.4					
695+78.77	PATCH					8.7					
696+31.57	PATCH					8.7					
698+95.57	PATCH				8.7						
702+12.37	PATCH				8.7						
706+34.00	CULVERT REM. & REPL.	45.5	39.4							45.5	39.4
708+98.77	PATCH					11.6					
711+62.77	PATCH					8.7					
714+26.77	PATCH					8.7					
715+32.37	PATCH					8.7					
715+85.17	PATCH					11.6					
719+01.97	PATCH					8.7					
720+07.57	PATCH				8.7						
724+29.97	PATCH					8.7					
724+82.77	PATCH					8.7					
725+35.57	PATCH					8.7					
725+68.00	CULVERT REM. & REPL.	42.3	42.3							42.3	42.3
727+46.77	PATCH					8.7					
727+99.57	PATCH					8.7					
728+52.37	PATCH					8.7					
729+05.17	PATCH					8.7					
731+16.37	PATCH					8.7					
732+74.77	PATCH					11.6					
733+27.57	PATCH					8.7					
733+80.37	PATCH					8.7					
735+38.77	PATCH					8.7					
735+91.57	PATCH					8.7					
736+97.17	PATCH					8.7					
738+02.77	PATCH					11.6					
740+66.77	PATCH					14.4					
743+30.77	PATCH					8.7					
743+83.57	PATCH					8.7					
744+36.37	PATCH					11.6					
745+41.97	PATCH					11.6					
745+94.77	PATCH					8.7					
746+47.57	PATCH					11.6					
747+53.17	PATCH					11.6					
748+58.77	PATCH					11.6					
751+75.57	PATCH					8.7					
753+86.77	PATCH					8.7					
TOTAL						1479.6		978.3		385.8	1195.0

ILLINOIS DEPARTMENT OF TRANSPORTATION
 F.A.S. 1517 (U.S. ROUTE 150)
 PATCHING SCHEDULE

SCALE: VERT. _____
 HORIZ. _____
 DATE _____

DRAWN BY _____
 CHECKED BY _____

REVISED
 7-17-06
 SHEETS

F.A.S. RTE.	SECTION	COUNTY	TOTAL SHEETS	SHEET NO.
1517	21RS-3 (3)RS-4	MCLEAN	223	27
STA.		TO STA.		
FED. ROAD DIST. NO.		ILLINOIS FED. AID PROJECT		

66383

DRIVEWAY LOCATION	PE/CE	EXISTING SURFACE TYPE	DRIVEWAY PAVEMENT REMOVAL (SQ YD)	PCC DRIVEWAY PAVEMENT 6" (SQ YD)	PCC DRIVEWAY PAVEMENT 8" (SQ YD)	INCIDENTAL BITUMINOUS SURFACING (TON)	BITUMINOUS MATERIALS (PRIME COAT) (GAL)	AGGREGATE BASE COURSE TYPE B, 8" (SQ YD)	AGGREGATE SURFACE COURSE TYPE B (TON)	AGGREGATE FOR TEMPORARY ACCESS (TON)	AGGREGATE SHOULDERS TYPE B (TON)	
											LEFT	RIGHT
U.S. ROUTE 150												
419+96 LT	PE	AGG.		28					18.2	31.0		
421+86 LT	CE	BIT.	93		80					36.5		
422+18 RT - MC	PE	BIT.	34	61						14.2		
422+97 LT - MC	CE	BIT.	190	40	80					36.5		
428+04 LT	FE	AGG.							53.3	53.3		
428+05 RT	FE	AGG.							22.8	22.8		
432+67 RT - MC	CE	AGG.		30	50					22.8		
433+84 RT - MC	PE	AGG.		75						20.5		
438+44 LT	FE	AGG.							53.7	53.7		
441+87 RT	CE	BIT.	451			59.5	200	531		241.7	11.0	11.9
445+86 RT	FE	AGG.							67.4	67.4		
446+59 RT - M	PE	BIT. APRON	52			4.3	15	45	19.2	30.5		
448+06 RT	FE	AGG.							61.5	61.5		
458+28 LT	FE	AGG.							55.6	55.6		
458+42 RT	FE	AGG.							57.8	57.8		
472+78 LT	FE	BIT.	84						55.6	55.6		
473+30 RT	FE	AGG.							61.5	61.5		
493+70 LT	FE	AGG.							49.2	49.2		
502+66 RT	FE	AGG.							55.1	55.1		
503+10 RT - M	PE	BIT. APRON	76			4.5	15	46	18.7	18.7		
507+99 LT	FE	AGG.							55.6	55.6		
508+94 RT	PE	AGG.				3.1	11	27	25.1	37.4		
533+07 RT - M	PE	BIT. APRON	45			4.4	15	45	21.0	32.8		
537+26 LT	FE	AGG.							61.5	61.5		
539+92 RT	FE	AGG.							55.1	55.1		
554+00 LT	FE	AGG.							61.5	61.5		
564+44 LT	FE	AGG.							43.3	43.3		
564+56 RT	FE	AGG.							43.3	43.3		
567+84 LT - M	PE	BIT. APRON	48			5.2	18	51	16.9	32.4		
585+20 LT	FE	AGG.							55.1	55.1		
585+87 RT	FE	AGG.							66.9	66.9		
588+28 RT - M	PE	BIT. APRON	9			4.4	15	45	16.9	28.7		
603+85 RT - M	PE	BIT. APRON	35			4.6	16	47	17.8	29.6		
604+96 RT	FE	AGG.							56.0	56.0		
610+86 LT - M	PE	BIT. APRON	31			4.3	15	44	16.0	27.4		
620+09 LT - M	PE	BIT.	80			9.5	32	90		32.8		
640+40 RT	FE	GRASS							14.2	14.2		
642+74 RT - MC	PE	BIT. APRON	39	54						11.0		
653+78 LT - M	PE	AGG.				5.9	20	61	18.3	30.5		
658+21 LT - M	PE	AGG.				6.0	20	62	19.2	31.9		
672+30 RT - M	PE	BIT. APRON	33			4.5	15	46	16.4	27.8		
679+50 LT	FE	AGG.							55.6	55.6		
695+52 LT - M	PE	AGG.				6.4	22	66	24.2	38.7		
698+53 LT	FE	AGG.							55.1	55.1		
698+53 RT	FE	AGG.							55.1	55.1		
700+64 LT	FE	AGG.							55.1	55.1		
702+43 LT	FE	AGG.							55.1	55.1		
714+49 LT	FE	AGG.							55.1	55.1		
722+64 RT	FE	AGG.							55.1	55.1		
727+31 RT	FE	AGG.							55.1	55.1		
741+14 LT	FE	AGG.							55.6	55.6		
747+16 LT	FE	AGG.							55.6	55.6		
751+79 RT	CE	BIT.	223			12.7	43	113		51.5		
SUBTOTAL - U.S. ROUTE 150			1503	288	210	139.3	472	1319	1906.4	2523.4	11.0	11.9
T.R. 2075												
1300+73 RT - M	PE	PCC	57	55		1.2	4	10		25.1		
1302+36 RT - M	PE	PCC	76	99		1.3	5	11		45.1		
1303+06.5 RT	CE	AGG.				8.1	21	54		24.6		
1303+69 RT	CE	AGG.				16.5	56	147		66.9		
1304+79 RT	CE	N/A				15.0	51	134		61.0		
C.H. 36 SOUTH												
1500+00.50 LT	PE	PCC	26	32						14.6		
1500+09.00 RT	PE	AGG.				2.7	9	24		11.0		
1500+86.50 LT	PE	BIT.	18	25						11.4		
1501+15.70 RT	PE	PCC	100	89						40.6		
T.R. 2325												
1700+92 RT	FE	AGGREGATE							46.5	46.5		
T.R. 2400												
1901+17 LT	FE	AGGREGATE							35.5	35.5		
SUBTOTAL - SIDE ROADS			277	300		42.8	146	380	82.0	382.3		
TOTAL			1780	588	210	182.1	618	1699	1988.4	2905.7	11.0	11.9

- NOTES:
1. EXISTING AGGREGATE ENTRANCE REMOVAL SHALL BE INCLUDED IN THE CONTRACT UNIT PRICE PER CUBIC YARD FOR EARTH EXCAVATION.
2. "M" DENOTES QUANTITIES INCLUDE INCIDENTAL BITUMINOUS SURFACING AND AGGREGATE BASE COURSE TYPE B, 8" REQUIRED FOR MAILBOX TURNOUT.

REVISED
7-17-06
SHEETS

ILLINOIS DEPARTMENT OF TRANSPORTATION
F.A.S. 1517 (U.S. ROUTE 150)
DRIVEWAY SCHEDULE

SCALE: VERT.
HORIZ.
DATE

DRAWN BY
CHECKED BY

PLAN	DATE
SURVEYED	BY
ALIGNED	DATE
CHECKED	
BY	
DATE	
NO.	

PROFILE	DATE
SURVEYED	BY
GRADES CHECKED	DATE
BLK. NOTED	
STRUCTURE NOTATIONS	
NO.	

COMPANY NAME: SEC. INC.
PROJECT CONTACT: TONY SIMMONS
DATE: 7/17/2006 10:30:33 PM
FILE: J:\SMTM\2006\1517\1517.dgn

COMPANY NAME: SEC, INC.
 PROJECT CONTACT: TONY SWINGS
 CLIENT: IDOT
 7/14/2008 10:46:35 AM
 F:\Jobs\SMITH\2008\0606\A\csc\fr-cv-241.dwg

PROFILE SURVEYED
 GRADES CHECKED
 NOTE BOOK
 NO. _____
 STRUCTURE NO. (THIS OFFICE)
 DATE _____

PLAN SURVEYED
 NOTE BOOK
 NO. _____
 DATE _____

LOCATION	TRENCH BACKFILL (CU YD)	POROUS GRAN. EMB. (CU YD)	REMOVE EXISTING CULVERTS (EACH)	REMOVING CATCH BASINS (EACH)	REMOVING INLETS (EACH)	STORM SEWERS CLASS A TYPE 1				MANHOLES TYPE A		TYPE A		TYPE B	
						12" (FT)	15" (FT)	18" (FT)	24" (FT)	TYPE 1 F & G (EACH)	SPECIAL F & G (EACH)	TYPE 3 F & G (EACH)	TYPE 8 GRATE (EACH)	SPECIAL F & G (EACH)	TYPE 8 GRATE (EACH)
U.S. ROUTE 150															
409+85 TO 410+00 RT								36							
410+00 TO 410+50 RT	16.9							47		1					
410+50 TO 410+50 LTRT	7.8						26								
410+50 TO 410+50 RT	2.1						6								
410+50 TO 410+59 LT	2.0						6								
410+50 TO 410+59 RT	2.0						6								
410+50 TO 413+00 RT	64.8						260			1					
413+00 TO 413+00 LTRT	7.8						26								
413+00 TO 413+00 RT	3.8						6								
413+00 TO 415+50 RT	99.5						260			1					
415+50 TO 415+50 LTRT	7.8						26								
415+50 TO 415+50 RT	5.6						6								
415+50 TO 418+00 RT	92.0						241			1					
418+00 TO 418+00 LTRT	7.8						26								
418+00 TO 418+00 RT	1.8						6								
421+90 TO 422+45 RT			1												
423+35 TO 423+35 LTRT	7.5						27								
423+35 TO 424+20 LTRT	33.7						88			1					
424+20 TO 424+20 LT									22						
424+20 TO 424+20 RT									77						
425+00 TO 425+00 LTRT	29.5						49								
425+00 TO 425+00 RT	18.8						15								
425+00 TO 425+15 LT									7						
427+00 TO 427+00 LTRT	8.9						26								
427+00 TO 428+38 LTRT			1												
428+00 RT			1												
429+00 TO 429+00 LT	8.4						13								
429+00 TO 429+00 LTRT							26								
431+00 TO 431+00 LT							11								
431+00 TO 431+00 LTRT	7.3						26								
432+67 RT			1												
433+00 TO 433+00 LT							12								
433+00 TO 433+00 LTRT	7.8						26								
433+84 RT			1												
435+00 TO 435+00 LT	8.9						15								
435+00 TO 435+00 LTRT							26								
437+00 TO 437+00 LT							11								
437+00 TO 437+00 LTRT	8.4						28								
437+00 TO 437+00 RT							4								
437+00 TO 437+31.88 RT							30								
437+84 RT			1												
438+15 TO 438+73 LT			1												
441+38 TO 442+48 RT	23.0														
442+60 LTRT		247.0													
445+68 RT			1												
448+30 TO 448+87 RT			1												
447+71 TO 448+40 RT			1												
448+10 LT			1												
457+97 TO 458+59 LT			1												
458+15 TO 458+72 RT			1												
472+47 TO 473+25 LT			1												
475+75 TO 473+60 RT			1												
476+00 TO 476+00 LTRT		122.1													
483+41 TO 484+00 LT			1												
507+04 TO 507+04 LTRT	38.3														
502+34 TO 503+37 RT			1												
507+66 TO 508+32 LT			1												
508+57 TO 509+25 RT			1												
508+57 TO 510+36 RT	26.6														
532+68 TO 532+68 LTRT		205.2													
532+88 TO 533+42 RT			1												
538+95 TO 537+56 LT			1												
539+65 TO 540+20 RT			1												
553+71 TO 554+29 LT			1												
560+42 TO 560+42 LTRT	8.7														
564+20 TO 564+68 LT			1												
564+32 TO 564+80 RT			1												
567+80 TO 568+07 LT			1												
564+96 TO 565+44 LT			1												
565+57 TO 566+25 RT			1												
568+08 TO 568+54 RT			1												
562+00 TO 562+00 LTRT		148.2													
595+00 TO 595+36 LT	20.1														
603+64 TO 604+08 RT			1												
604+68 TO 605+24 RT			1												
610+64 TO 611+06 LT			1												
613+34 LT TO 613+34 RT	7.8														
619+82 TO 620+33 LT			1												
629+82 TO 627+83 RT	20.0														
627+93 TO 627+93 LTRT	20.7														
639+30 TO 645+20 RT	103.4														
640+82 TO 641+78 LT	14.4														
653+85 TO 654+00 LT			1												
653+85 TO 655+47 LT		102.6													
662+34 TO 662+34 LTRT			1												
670+54 RT			1												
672+08 TO 672+58 RT			1												
679+25 TO 679+75 LT			1												
679+65 TO 680+90 RT			1												
695+24 TO 695+77 LT	24.6														
698+24 TO 698+82 LT			1												
698+27 TO 698+80 RT			1												
700+33 TO 700+95 LT			1												
702+12 TO 702+73 LT			1												
708+25.5 TO 708+44 LTRT	82.8														
714+16 TO 714+81 LT			1												
722+38 TO 722+90 RT			1												
725+68 TO 725+68	188.1														
727+05 TO 727+57 RT			1												
740+84 TO 741+45 LT			1												
748+65 TO 747+48 LT			1												
751+50 TO 752+06 RT			1												
SUBTOTAL	831.3	1014.2	60	2	0	771	500	698	106	7	6	0	2	2	10
SEMINARY STREET															
1100+75.66 TO 1100+77.30 RT/LT															
C.H. 36 NORTH															
1205+38 TO 1205+38 LTRT	15.4		1												
T.R. 207E															
1300+50 TO 1301+11 RT	5.2														
1301+86 TO 1302+66 RT	7.8														
1302+80 TO 1303+23 RT	3.0														
1303+46 TO 1303+92 RT	7.1		1												
1304+40 TO 1305+10 RT	12.5		1												
C.H. 36 SOUTH															
1501+15.7 LT	9.4														
T.R. 232E															
1700+82 RT			1												
TOTAL	881.7	1014.2	64	2	2	771	500	698	106	7	6	0	2	2	10

NOTES:
 1. ARCH SIZES INDICATE EQUIVALENT ROUND-SIZE.
 2. GRATING FOR ALL BOX CULVERT END SECTIONS SHALL BE INSTALLED IN ACCORDANCE WITH THE DETAILS IN THE PLANS.
 THIS WORK SHALL NOT BE PAID FOR SEPARATELY, BUT SHALL BE INCLUDED IN THE CONTRACT UNIT PRICE PER FOOT FOR PRECAST CONCRETE BOX CULVERTS OF THE SIZE SPECIFIED.
 3. CAST-IN-PLACE END SECTIONS FOR BOX CULVERT NO. 1 SHALL BE PAID FOR AT THE CONTRACT UNIT PRICE PER CUBIC YARD FOR CONCRETE BOX CULVERTS.

F.A.S. RTE.	SECTION	COUNTY	TOTAL SHEETS	SHEET NO.
1517	(2)RS-3 (3)RS-4	MCLEAN	223	28
STA.	TO STA.			
FED. ROAD DIST. NO.	ILLINOIS	FED. AID PROJECT		

66383

ILLINOIS DEPARTMENT OF TRANSPORTATION
 F.A.S. 1517 (U.S. ROUTE 150)
 STORM SEWER AND CULVERT SCHEDULE
 (SHEET 1 OF 3)

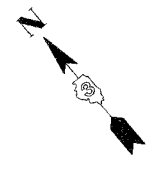
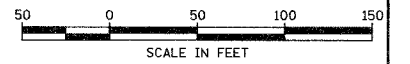
SCALE: VERT. _____
 HORIZ. _____
 DATE _____

DRAWN BY _____
 CHECKED BY _____

REVISED
 7-17-06
 SHEETS

F.A.S. RTE.	SECTION	COUNTY	TOTAL SHEETS	SHEET NO.
1517	(2)RS-3 (3)RS-4	MCLEAN	223	41
STA. _____ TO STA. _____		ILLINOIS FED. AID PROJECT		

66383



LEGEND

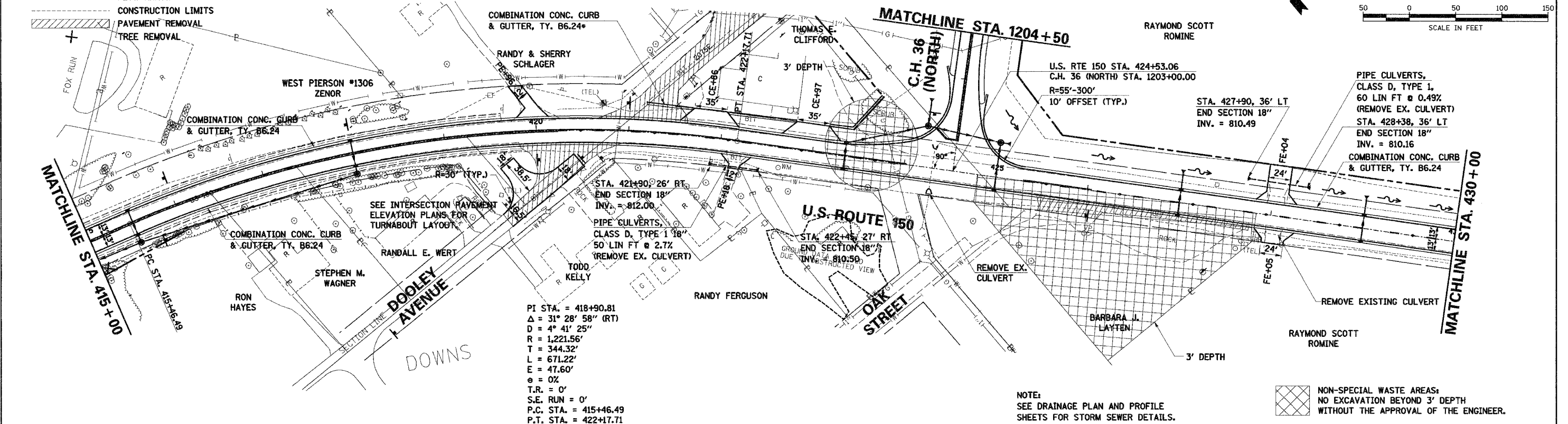
- EXISTING R.O.W.
- - - PROPOSED R.O.W.
- ||||| TEMPORARY EASEMENT
- FLOW ARROW
- - - CONSTRUCTION LIMITS
- ▨ PAVEMENT REMOVAL
- ⊕ TREE REMOVAL

• 200' OF CURB AND GUTTER PROVIDED TO PREVENT VEHICLE ENCRoACHMENT ONTO U.S. ROUTE 150.

DATE	BY	REVISION

DATE	BY	REVISION

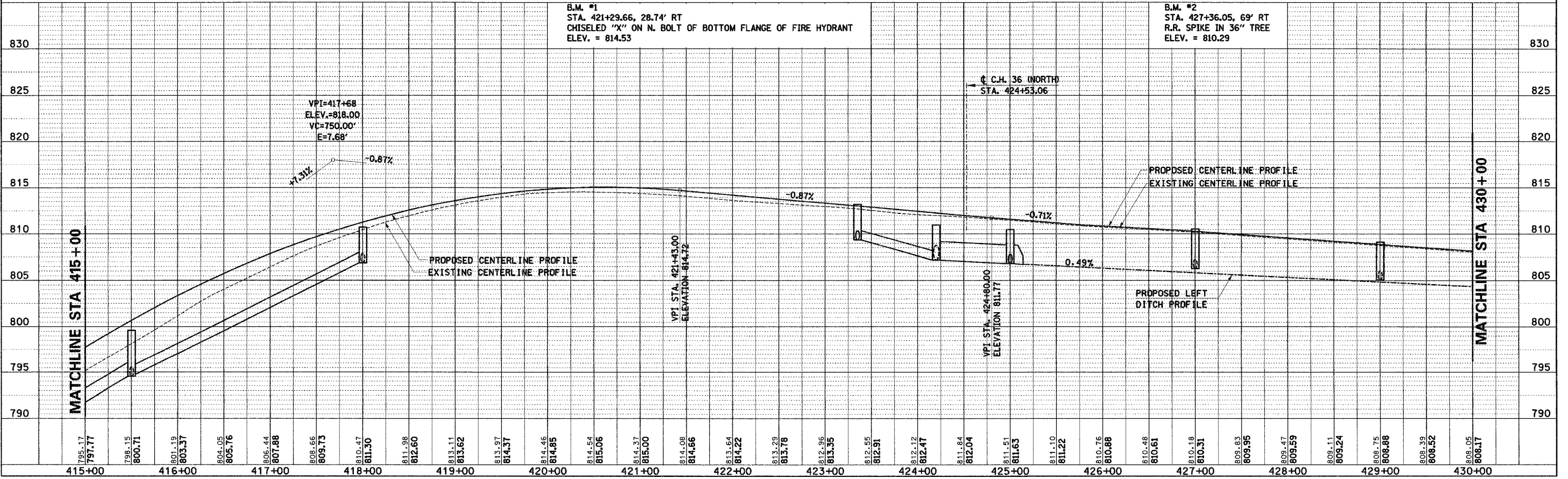
COMPANY NAME: SEC. INC.
 PROJECT CONTACT: TONY SIMMONS
 CLIENT: IDOT
 7/14/2005 12:23:11 PM
 T:\0303\Smith\2005\06024\cadd\plan\env\241-pln-150p02.dgn



PI STA. = 418+90.81
 $\Delta = 31^\circ 28' 58''$ (RT)
 D = 4' 41' 25"
 R = 1,221.56'
 T = 344.32'
 L = 671.22'
 E = 47.60'
 $\theta = 0\%$
 T.R. = 0'
 S.E. RUN = 0'
 P.C. STA. = 415+46.49
 P.T. STA. = 422+17.71

NOTE:
 SEE DRAINAGE PLAN AND PROFILE SHEETS FOR STORM SEWER DETAILS.

NON-SPECIAL WASTE AREAS:
 NO EXCAVATION BEYOND 3' DEPTH WITHOUT THE APPROVAL OF THE ENGINEER.

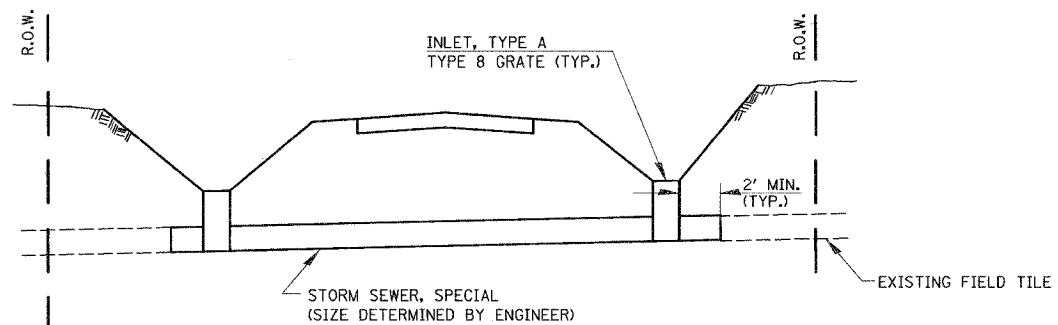


U.S. ROUTE 150 STA. 415+00 TO STA. 430+00 - PLAN AND PROFILE

REVISED
 7-17-06
 SHEETS

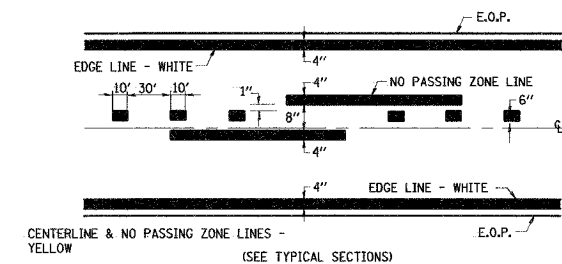
F.A.S. RTE.	SECTION	COUNTY	TOTAL SHEETS	SHEET NO.
1517 (2)RS-3 (3)RS-4		MCLEAN	223	107
STA.	TO STA.			
FED. ROAD DIST. NO.	ILLINOIS	FED. AID PROJECT		

66383

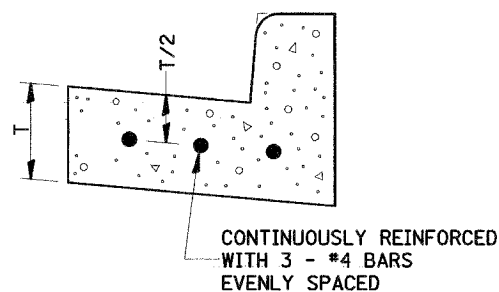


- NOTES:
1. EXACT LOCATION FOR FIELD TILE REPLACEMENT TO BE DETERMINED BY THE ENGINEER.
 2. EXISTING CATCH BASINS SHALL BE REMOVED.
 3. REMOVAL OF EXISTING FIELD TILE SHALL BE INCLUDED IN THE CONTRACT UNIT PRICE FOR STORM SEWER SPECIAL.

FIELD TILE REPLACEMENT (STA. 613 + 34)

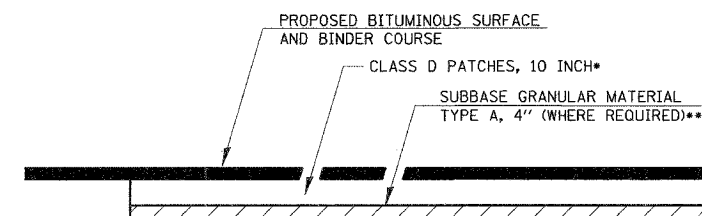


PAVEMENT MARKING



REINFORCEMENT SHALL NOT BE PAID FOR SEPARATELY BUT WILL BE INCLUDED IN THE CONTRACT UNIT PRICE FOR CC&G.

REINFORCEMENT DETAIL FOR COMBINATION CONCRETE CURB AND GUTTER TYPE B-6.24



- * SEE PATCHING SCHEDULE FOR LOCATIONS AND QUANTITIES.
- ** SUBBASE GRANULAR MATERIAL ONLY REQUIRED AT STORM SEWER, CULVERT, AND FIELD TILE LOCATIONS.

NOTE:
AT STORM SEWER, CULVERT, AND FIELD TILE LOCATIONS, THE PATCH SHALL EXTEND 5' BEYOND THE EDGE OF THE TRENCH ON EACH SIDE.

PAVEMENT PATCHING DETAIL

PLAN	DATE
SURVEYED	BY
ALIGNED	CHECKED
NOTE BOOK	NO.
CLASS FILE NAME	

PROFILE	DATE
SURVEYED	BY
GRADES CHECKED	CHECKED
NOTE BOOK	NO.
STRUCTURE NOTATIONS	CP/CS

COMPANY NAME: SEC, INC.
PROJECT CONTACT: TONY SIMONS
CLIENT: IDOT
7/1/2006 6:06:09 PM
T:\Jobs\Smith\2006\0602\4\cch\11r-crd\241.dwg

REVISED
7-17-06
SHEETS

ILLINOIS DEPARTMENT OF TRANSPORTATION
F.A.S. 1517 (U.S. ROUTE 150)
MISCELLANEOUS DETAILS

SCALE: VERT.
HORIZ.
DATE

DRAWN BY
CHECKED BY