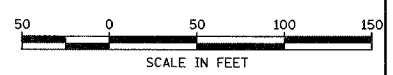


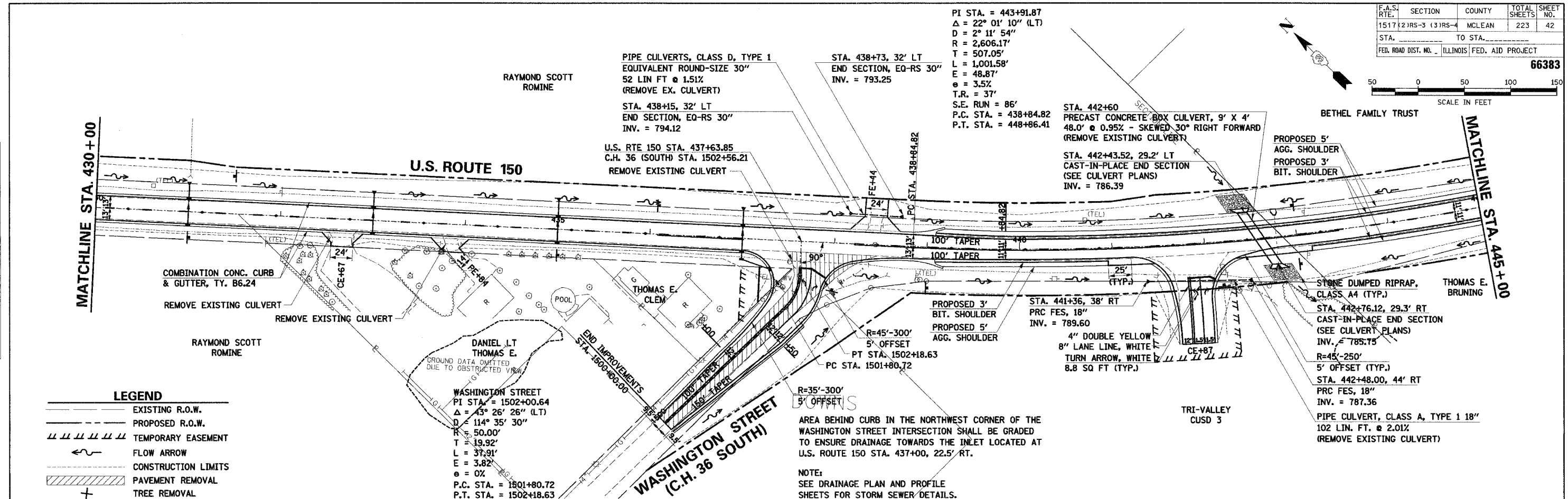
F.A.S. SECTION COUNTY TOTAL SHEETS SHEET NO.	1517 (2)RS-3 (3)RS-4 MCLEAN 223 42
STA. TO STA.	
FED. ROAD DIST. NO. - ILLINOIS FED. AID PROJECT	66383



DATE	
BY	
REVISIONS	
NO.	
DATE	
BY	
REVISIONS	
NO.	
DATE	
BY	
REVISIONS	
NO.	

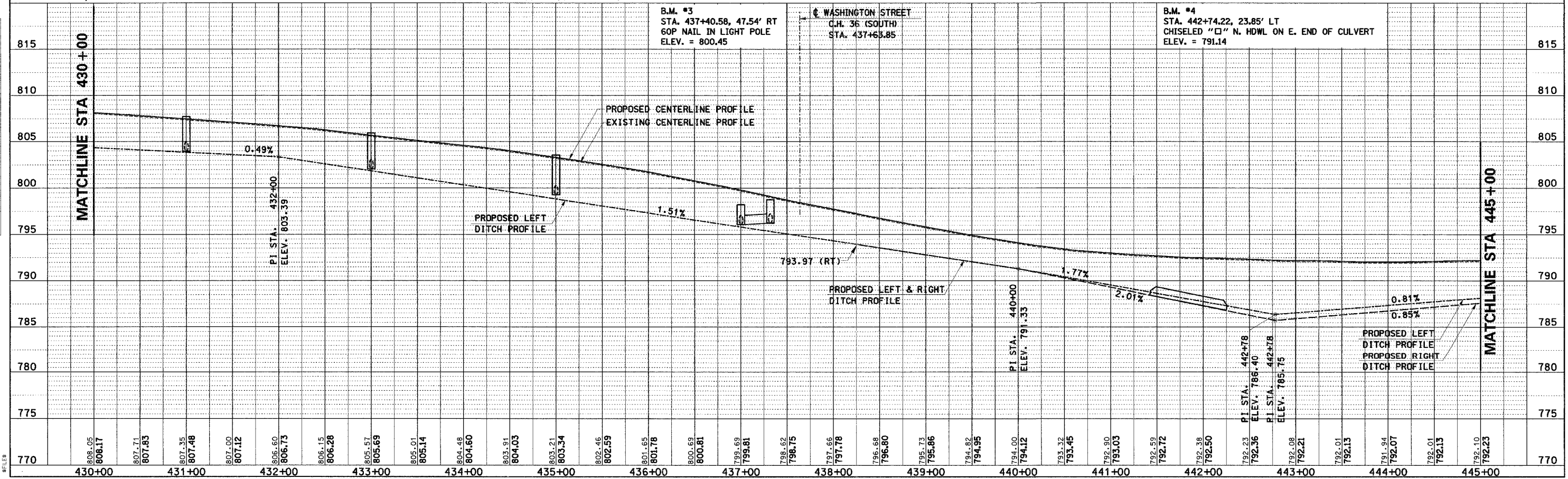
DATE	
BY	
REVISIONS	
NO.	
DATE	
BY	
REVISIONS	
NO.	

COMPANY NAME: #COMPANY NAME#
 PROJECT CONTACT: #PROJECT CONTACT#
 CLIENT: #CLIENT#
 DATE: #DATE#
 SHEET: #SHEET#



LEGEND

- EXISTING R.O.W.
- PROPOSED R.O.W.
- TEMPORARY EASEMENT
- FLOW ARROW
- CONSTRUCTION LIMITS
- PAVEMENT REMOVAL
- TREE REMOVAL



U.S. ROUTE 150 STA. 430+00 TO STA. 445+00 - PLAN AND PROFILE