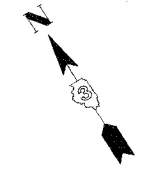
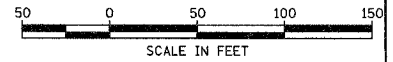


F.A.S. RTE.	SECTION	COUNTY	TOTAL SHEETS	SHEET NO.
1517 (2)RS-3 (3)RS-4	MCLEAN	223	51	
STA.	TO STA.			
FED. ROAD DIST. NO.		ILLINOIS FED. AID PROJECT		

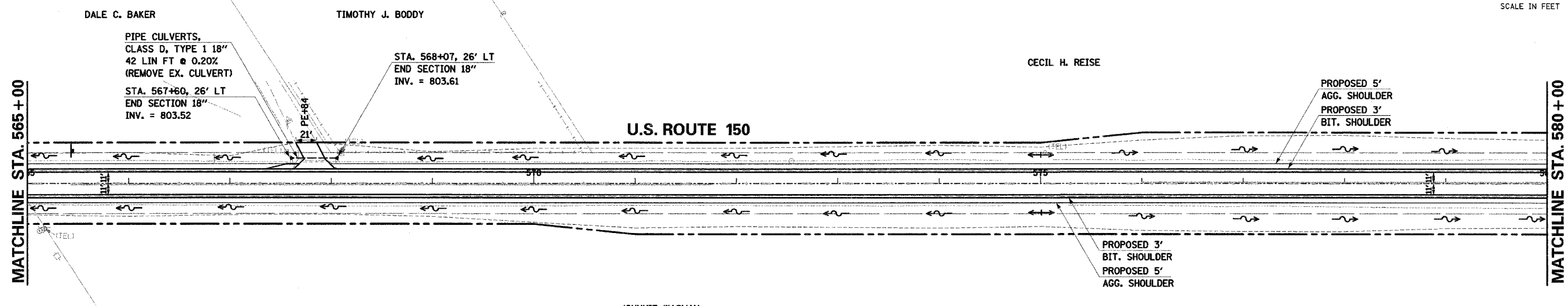
66383



DATE	BY
DATE	BY

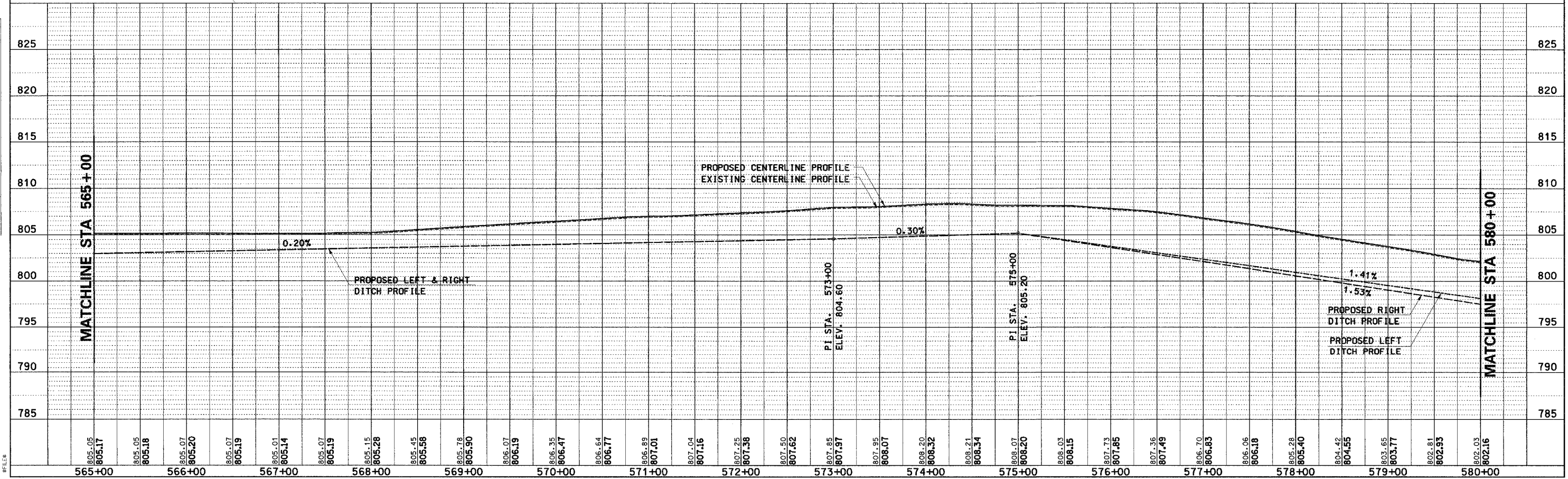
DATE	BY
DATE	BY

COMPANY NAME: #COMPANY NAME#
 PROJECT CONTACT: #PROJECT CONTACT#
 CLIENT: #CLIENT#
 DATE: #DATE#
 TIME: #TIME#



LEGEND

	EXISTING R.O.W.
	PROPOSED R.O.W.
	TEMPORARY EASEMENT
	FLOW ARROW
	CONSTRUCTION LIMITS
	PAVEMENT REMOVAL
	TREE REMOVAL



U.S. ROUTE 150 STA. 565+00 TO STA. 580+00 - PLAN AND PROFILE