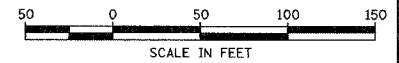


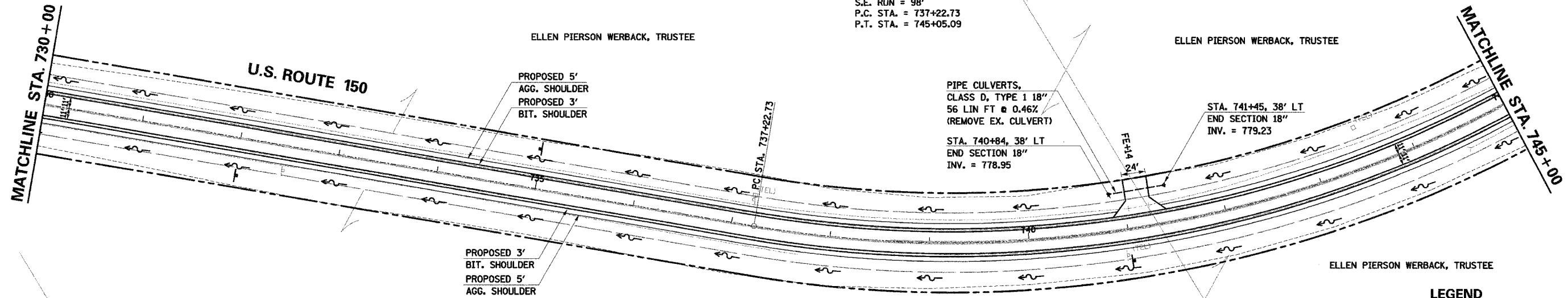
F.A.S. RTE.	SECTION	COUNTY	TOTAL SHEETS	SHEET NO.
1517 (2)RS-3 (3)RS-4		MCLEAN	223	62
STA. _____ TO STA. _____				
FED. ROAD DIST. NO. _____ ILLINOIS FED. AID PROJECT				

66383



PI STA. = 741+28.96
 $\Delta = 38^\circ 03' 57''$ (LT)
 $D = 4^\circ 51' 56''$
 $R = 1,177.59'$
 $T = 406.23'$
 $L = 782.36'$
 $E = 68.10'$
 $\theta = 4.0\%$
 $T.R. = 37'$
 $S.E. RUN = 98'$
 $P.C. STA. = 737+22.73$
 $P.T. STA. = 745+05.09$

PLAN	BY	DATE
SURVEYED		
NOTE BOOK		
ALIGNED		
CHECKED		
DATE		
BY		

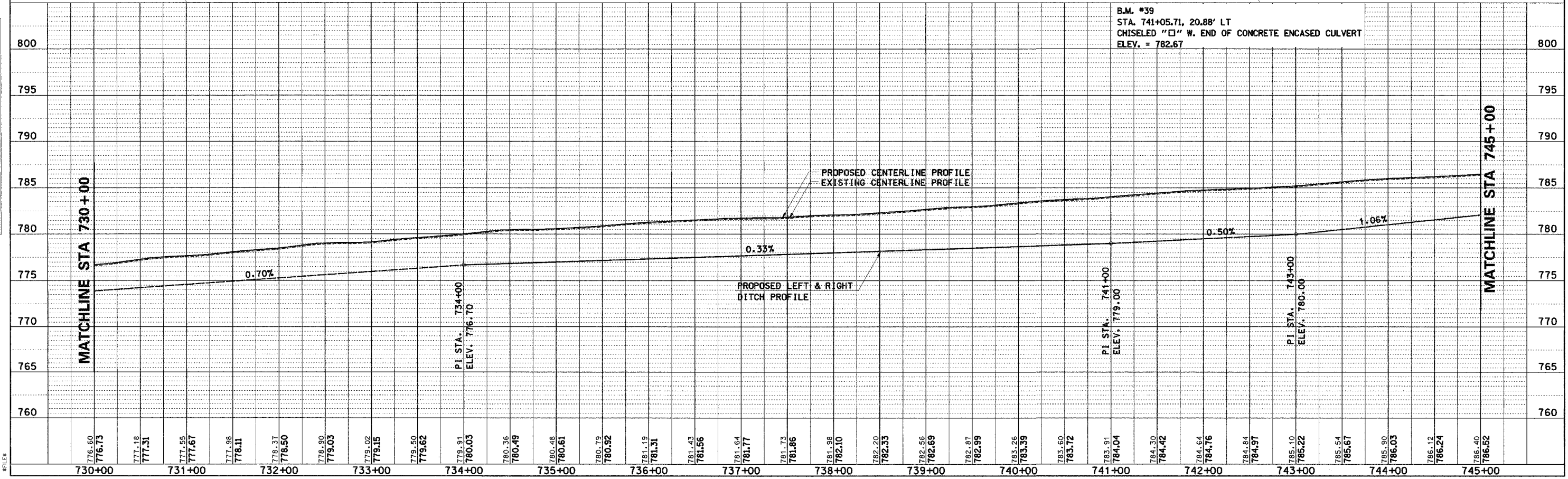


ELLEN PIERSON WERBACK, TRUSTEE

LEGEND

- EXISTING R.O.W.
- PROPOSED R.O.W.
- TEMPORARY EASEMENT
- FLOW ARROW
- CONSTRUCTION LIMITS
- PAVEMENT REMOVAL
- TREE REMOVAL

PROFILE	BY	DATE
SURVEYED		
GRADES CHECKED		
DATE		
BY		



COMPANY NAME: #COMPANY NAME#
 PROJECT CONTACT: #PROJECT CONTACT#
 CLIENT: #CLIENT#
 DATE: #DATE#
 SHEET: #SHEET#

U.S. ROUTE 150 STA. 730+00 TO STA. 745+00 - PLAN AND PROFILE