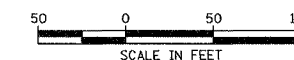


F.A.S. RTE.	SECTION	COUNTY	TOTAL SHEETS	SHEET NO.
1517 (2)RS-3 (3)RS-4		MCLEAN	223	69
STA.	TO STA.			
FED. ROAD DIST. NO.	ILLINOIS	FED. AID PROJECT		

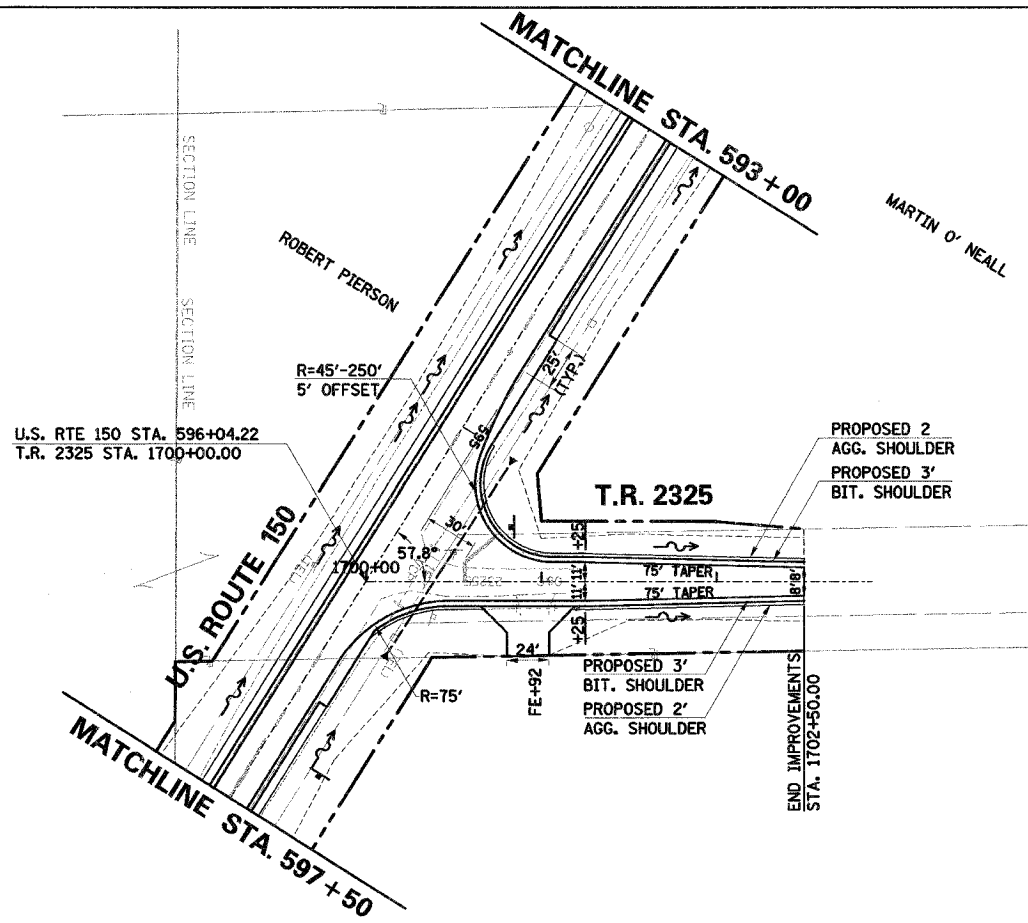
66383



DATE	BY
DATE	BY

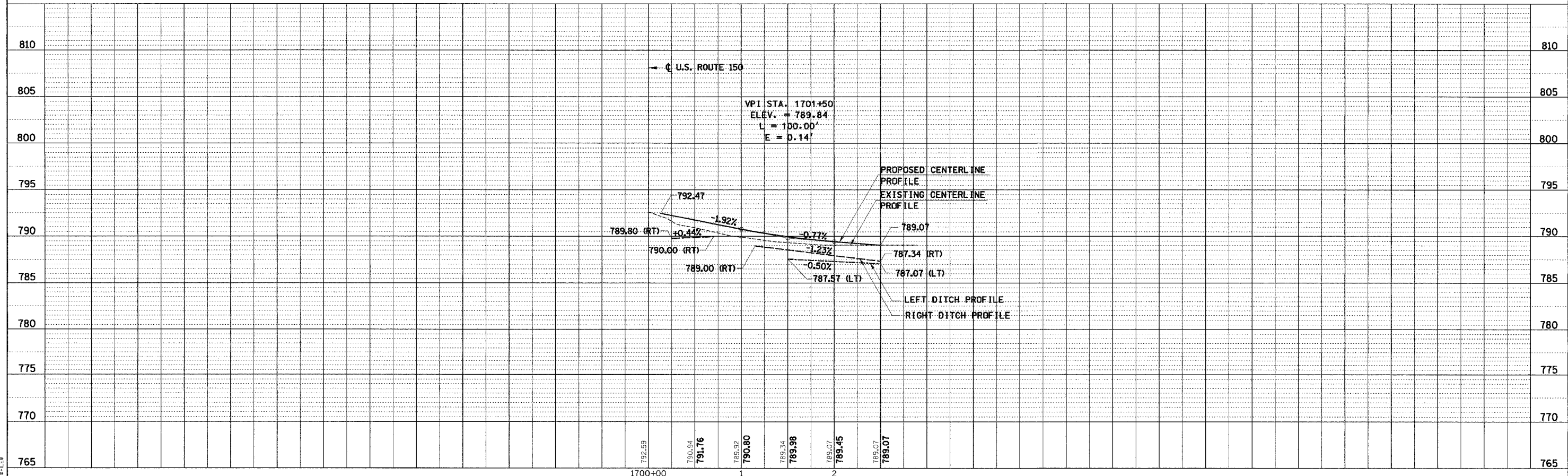
DATE	BY
DATE	BY

COMPANY NAME # COMPANY NAME #
 PROJECT CONTACT # PROJECT CONTACT #
 CLIENT # CLIENT #
 DATE # TIME #
 SHEET #



LEGEND

	EXISTING R.O.W.
	PROPOSED R.O.W.
	TEMPORARY EASEMENT
	FLOW ARROW
	CONSTRUCTION LIMITS
	PAVEMENT REMOVAL
	TREE REMOVAL



T.R. 2325 STA. 1700+00 TO STA. 1702+50 - PLAN AND PROFILE