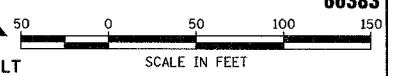


F.A.S. RTE.	SECTION	COUNTY	TOTAL SHEETS	SHEET NO.
1517 (2)RS-3 (3)RS-4		MCLEAN	223	74
STA.	TO STA.			
FED. ROAD DIST. NO.	ILLINOIS FED. AID PROJECT			

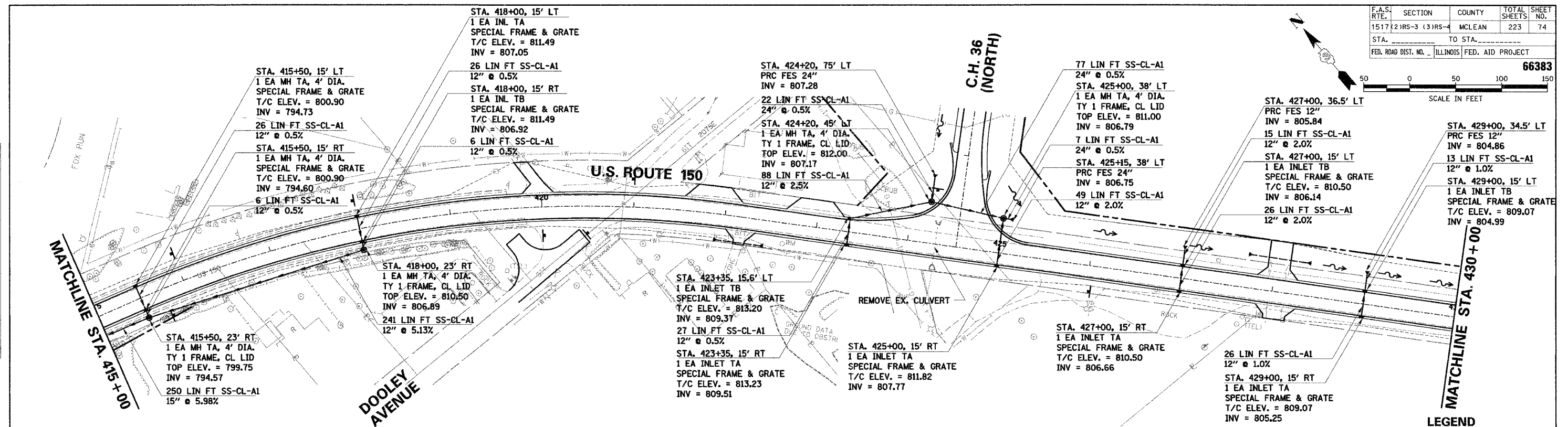
66383



DATE	BY
DATE	BY

DATE	BY
DATE	BY

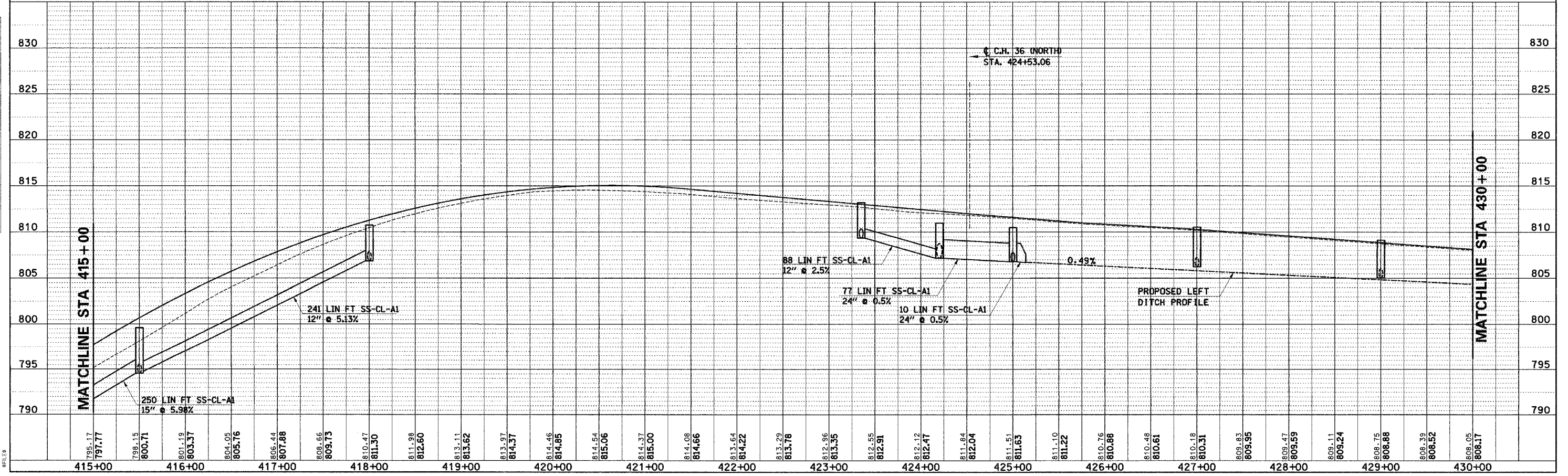
COMPANY NAME: #COMPANY NAME#
 PROJECT CONTACT: #PROJECT CONTACT#
 CLIENT: #CLIENT#
 DATES: #DATES#
 FILES: #FILES#



NOTE:
SPECIAL FRAME AND GRATE SHALL BE A NEENAH R-3222-LA OR EQUIVALENT.

LEGEND

- EXISTING R.O.W.
- PROPOSED R.O.W.
- TEMPORARY EASEMENT
- FLOW ARROW
- CONSTRUCTION LIMITS



U.S. ROUTE 150 STA. 415+00 TO STA. 430+00 - DRAINAGE PLAN AND PROFILE