

NW. 1/4 OF SECTION 20,
T. 22 N., R. 4 E., OF THE 3RD PM.

NE. 1/4 OF SECTION 20,
T. 22 N., R. 4 E., OF THE 3RD PM.

NORTH 1/4 CORNER
SEC. 20, T 22 N, R 4 E, 3 PM
FOUND PIPE / STONE
MON. REC. DOC. 2001R27467



LOT 1
SUB. OF SECTION 20

AREA REMAINING THIS SIDE = 100.736 ACRES ±

PARCEL NO. 3PX0057

ELLEN PIERSON WERBACK, TRUSTEE
FOR AREAS SEE SHEET 23

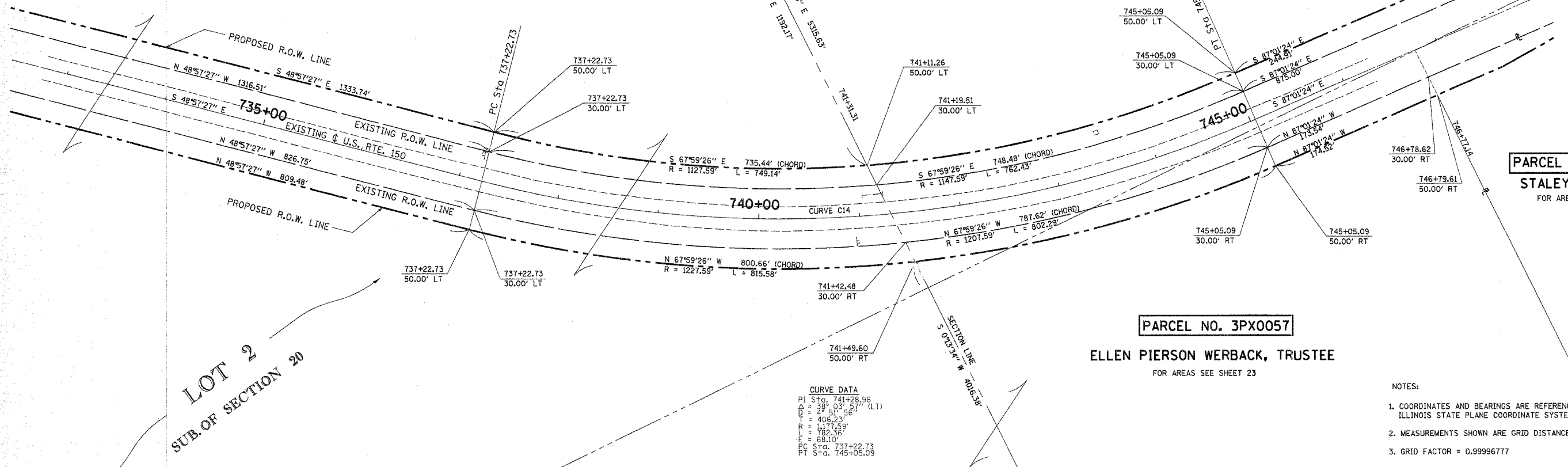
PARCEL NO. 3PX0058

STALEY GRAIN, INC.
FOR AREAS SEE SHEET 25

PARCEL NO. 3PX0057

ELLEN PIERSON WERBACK, TRUSTEE
FOR AREAS SEE SHEET 23

PREPARED BY	DATE
CHECKED BY	DATE
APPROVED BY	DATE



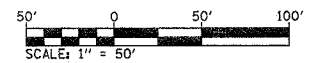
LOT 2
SUB. OF SECTION 20

AREA REMAINING THIS SIDE = 28.716 ACRES ±

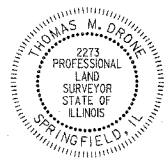
CURVE DATA

PI Sta.	741+28.96
Δ	88°03'57" (L.T.)
CD	406.23'
PC Sta.	737+22.73
PT Sta.	741+49.60
PC	1127.59'
PT	1127.59'
PI	741+28.96

- NOTES:
- COORDINATES AND BEARINGS ARE REFERENCED TO THE ILLINOIS STATE PLANE COORDINATE SYSTEM, EAST ZONE (NAD 83).
 - MEASUREMENTS SHOWN ARE GRID DISTANCE
 - GRID FACTOR = 0.99996777



I, THOMAS M. DRONE, HEREBY CERTIFY THAT I AM A PROFESSIONAL LAND SURVEYOR OF THE STATE OF ILLINOIS, THAT THE SURVEY OF F.A.S. 1517 WAS MADE BY HURST-ROSCHKE ENGINEERS, INC., UNDER MY DIRECTION, AND THAT THE SURVEY IS TRUE AND COMPLETE AS SHOWN TO THE BEST OF MY KNOWLEDGE AND BELIEF, THAT ALL MONUMENTS AND MARKS ARE OF THE CHARACTER AND OCCUPY THE POSITION SHOWN HEREON, AND ARE SUFFICIENT TO ENABLE THE SURVEY TO BE RETRACED. THIS PROFESSIONAL SERVICE CONFORMS TO THE CURRENT ILLINOIS MINIMUM STANDARDS FOR A BOUNDARY SURVEY.



8-25-05
DATE
ILLINOIS PROFESSIONAL LAND SURVEYOR NO. 35-002273
LICENSE EXPIRES: 11-30-06

SOUTH 1/4 CORNER
SEC. 20, T 22 N, R 4 E, 3 PM
SET IRON PIN
MON. REC. DOC. 2001R27467

RIGHT OF WAY PLANS	
ROUTE	F.A.S. 1517 (US 150)
SECTION	(2) RS-3, (3) RS-4
PROJECT	
COUNTY	MCLEAN
JOB NUMBER	R-93-022-00
STATION	733+00 TO 746+00
SCALE	1" = 50' SHEET 24 OF 25