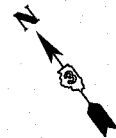
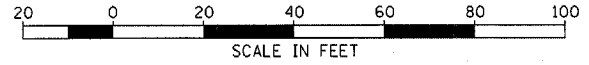


PLAN	SURVEYED	DATE
	PLOTTED	BY
	CHECKED	BY
	RT. OF WAY CHECKED	BY
	ROAD FILE NAME	NO.

PROFILE	SURVEYED	DATE
	PLOTTED	BY
	CHECKED	BY
	STRUCTURE NOTATIONS CHECKED	BY
	NO.	

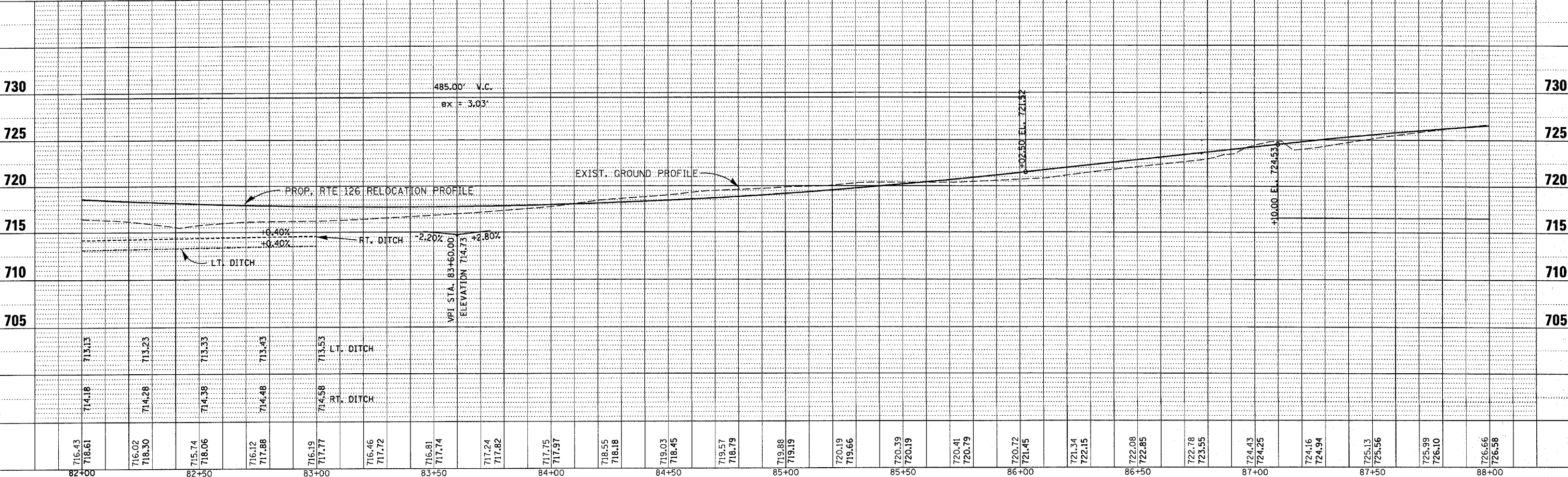
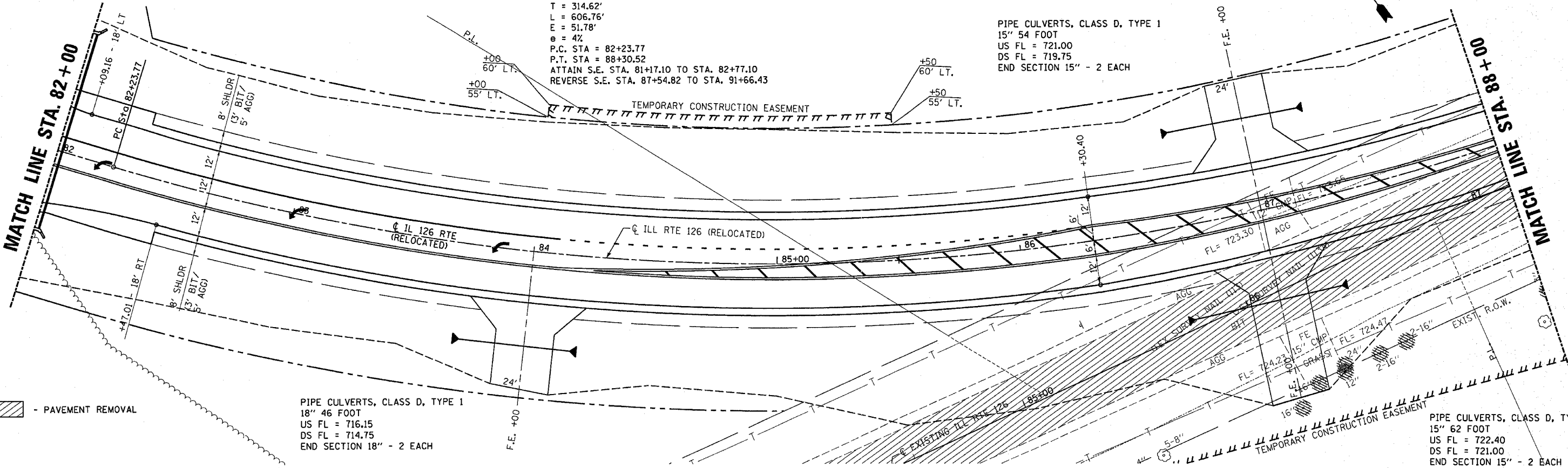
3/30/2006
c:\projects\ep02804\consult\pp-126-60-66.dwg

F.A.P. RTE.	SECTION	COUNTY	TOTAL SHEETS	SHEET NO.
311	I N & TS	KENDALL	174	39
STA. 82+00		TO STA. 88+00		
FED. ROAD DIST. NO. 7 ILLINOIS FED. AID PROJECT				



PROP. CURVE
 PI STA. = 85+38.39
 $\Delta = 37^\circ 22' 53''$ (LT)
 $D = 6^\circ 09' 39''$
 $R = 930.00'$
 $T = 314.62'$
 $L = 606.76'$
 $E = 51.78'$
 $e = 4\%$
 P.C. STA = 82+23.77
 P.T. STA = 88+30.52
 ATTAIN S.E. STA. 81+17.10 TO STA. 82+77.10
 REVERSE S.E. STA. 87+54.82 TO STA. 91+66.43

PIPE CULVERTS, CLASS D, TYPE 1
 15" 54 FOOT
 US FL = 721.00
 DS FL = 719.75
 END SECTION 15" - 2 EACH



**FAS 2312 (IL 126) RELOCATED
 STA.82+00 to STA.88+00**