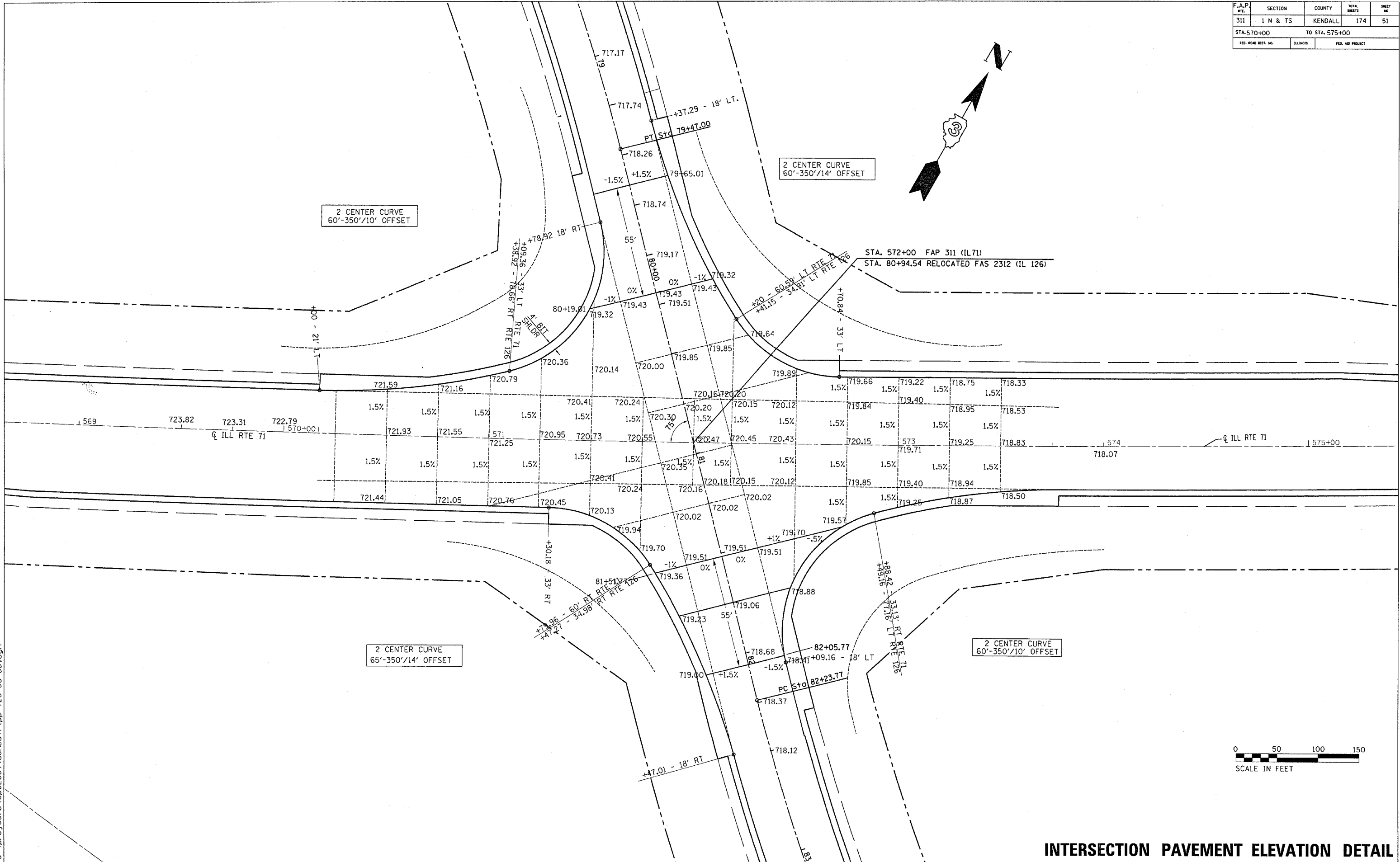


F.A.P. RTE.	SECTION	COUNTY	TOTAL SHEETS	SHEET NO.
311	1 N & TS	KENDALL	174	51
STA-570+00		TO STA. 575+00		
FED. ROAD DIST. NO.	ILLINOIS	FED. AID PROJECT		



2/22/2006 c:\projects\ep02804\consul\pp-126-60-66.dgn

INTERSECTION PAVEMENT ELEVATION DETAIL
STA. 570 + 00 TO STA. 575 + 00