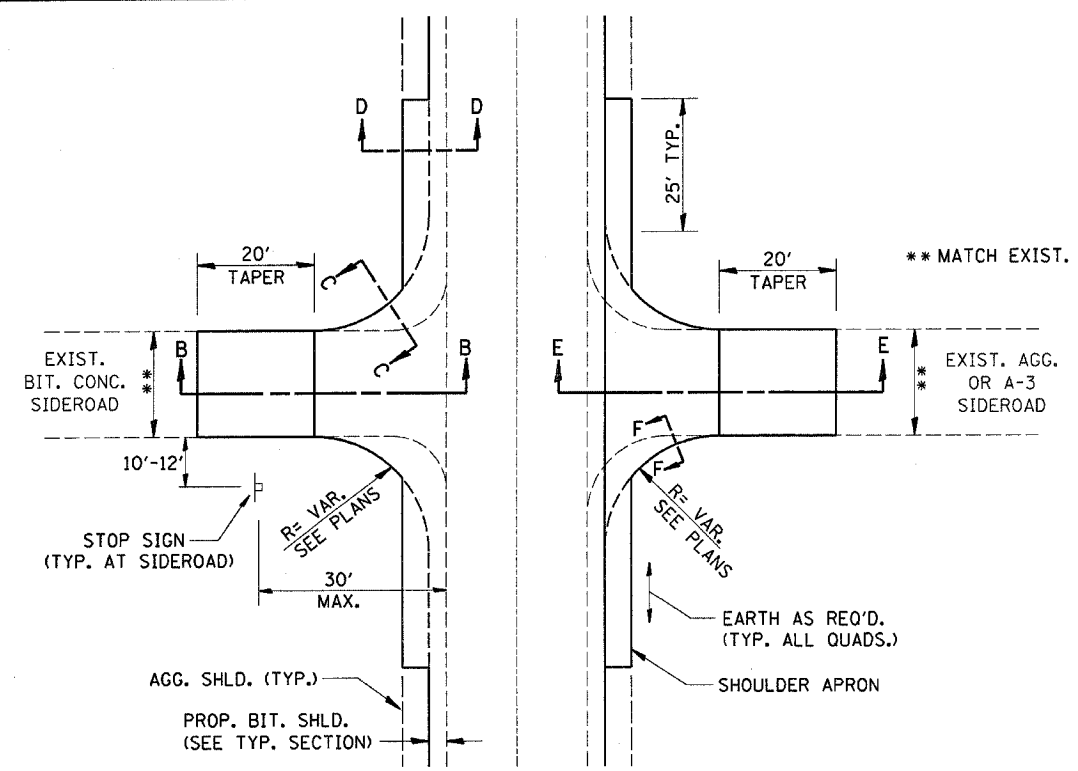
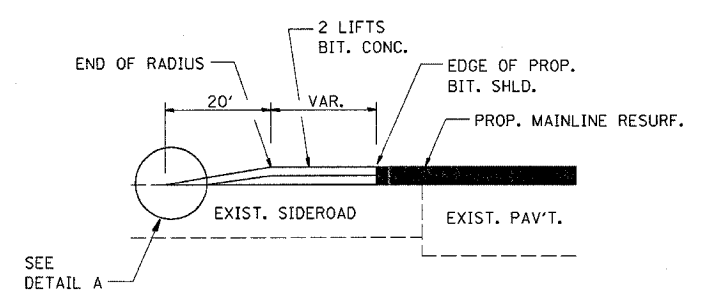


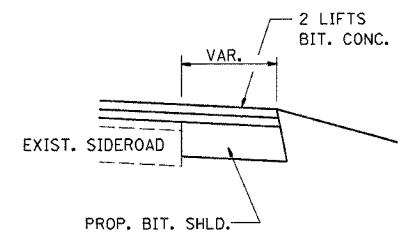
F.A. RTE.	SECTION	COUNTY	TOTAL SHEETS	SHEET NO.
311	IN & TS	KENDALL	174	80
STA.		TO STA.		
FED. ROAD DIST. NO.		ILLINOIS FED. AID PROJECT		



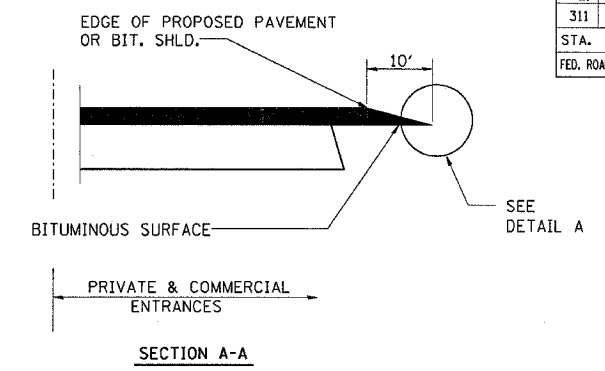
SIDEROAD DETAIL



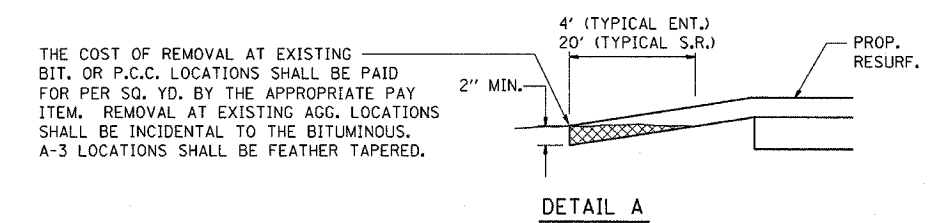
SECTION B-B



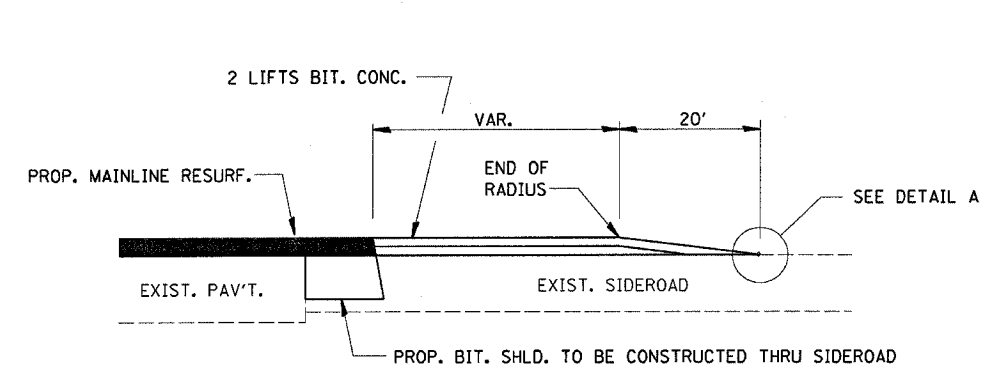
SECTION C-C



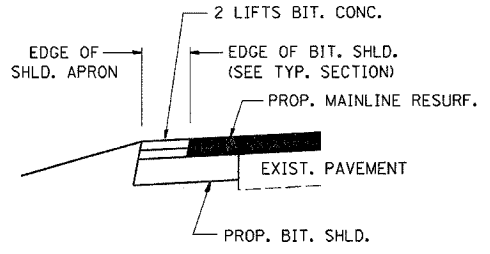
DETAILS AT ENTRANCES



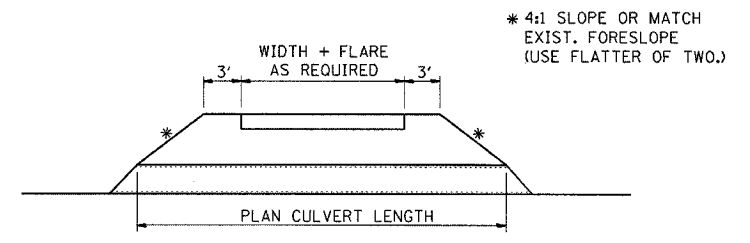
DETAIL A



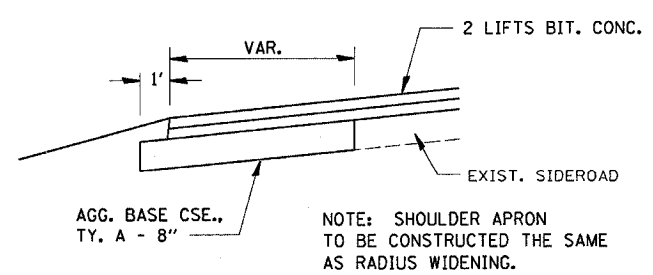
SECTION E-E



SECTION D-D

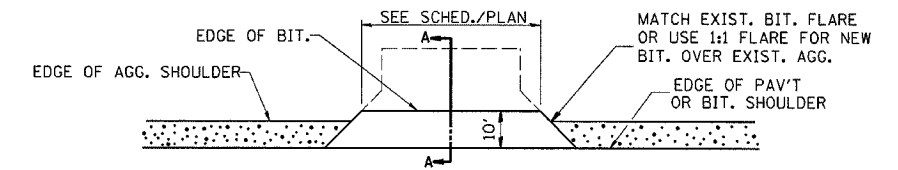


PLAN AT PRIVATE & COMMERCIAL ENTRANCES (DO NOT RESURFACE FIELD ENTRANCES)



SECTION F-F

NOTE: SHOULDER APRON TO BE CONSTRUCTED THE SAME AS RADIUS WIDENING.



REVISIONS	
NAME	DATE

ILLINOIS DEPARTMENT OF TRANSPORTATION

DETAILS

SCALE: VERT. DATE

DRAWN BY CHECKED BY

OCT. 1995
IDETALLS1 400499.DGN
406-3
2/21/2006
c:\proj\sect\1\map2804.dwg