

FAP RTE.	SECTION	COUNTY	TOTAL SHEETS	SHEET NO.
317	(25B-1)I	LIVINGSTON	21	8
STA. 472+94.25		TO STA. 474+79.75		

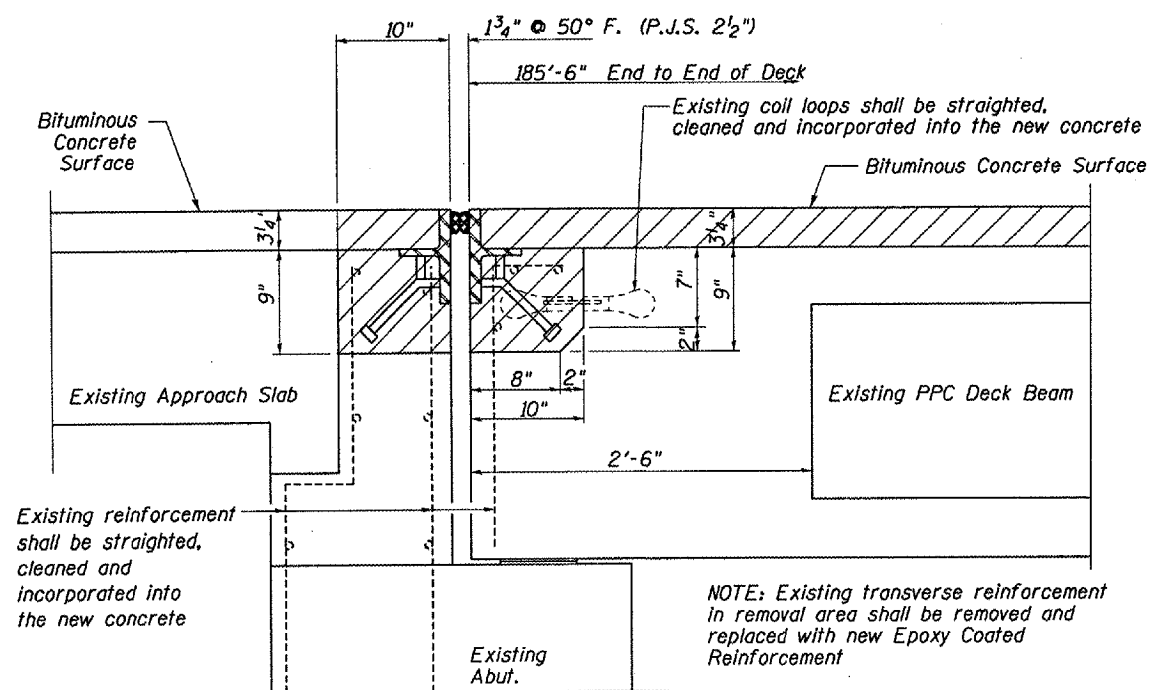
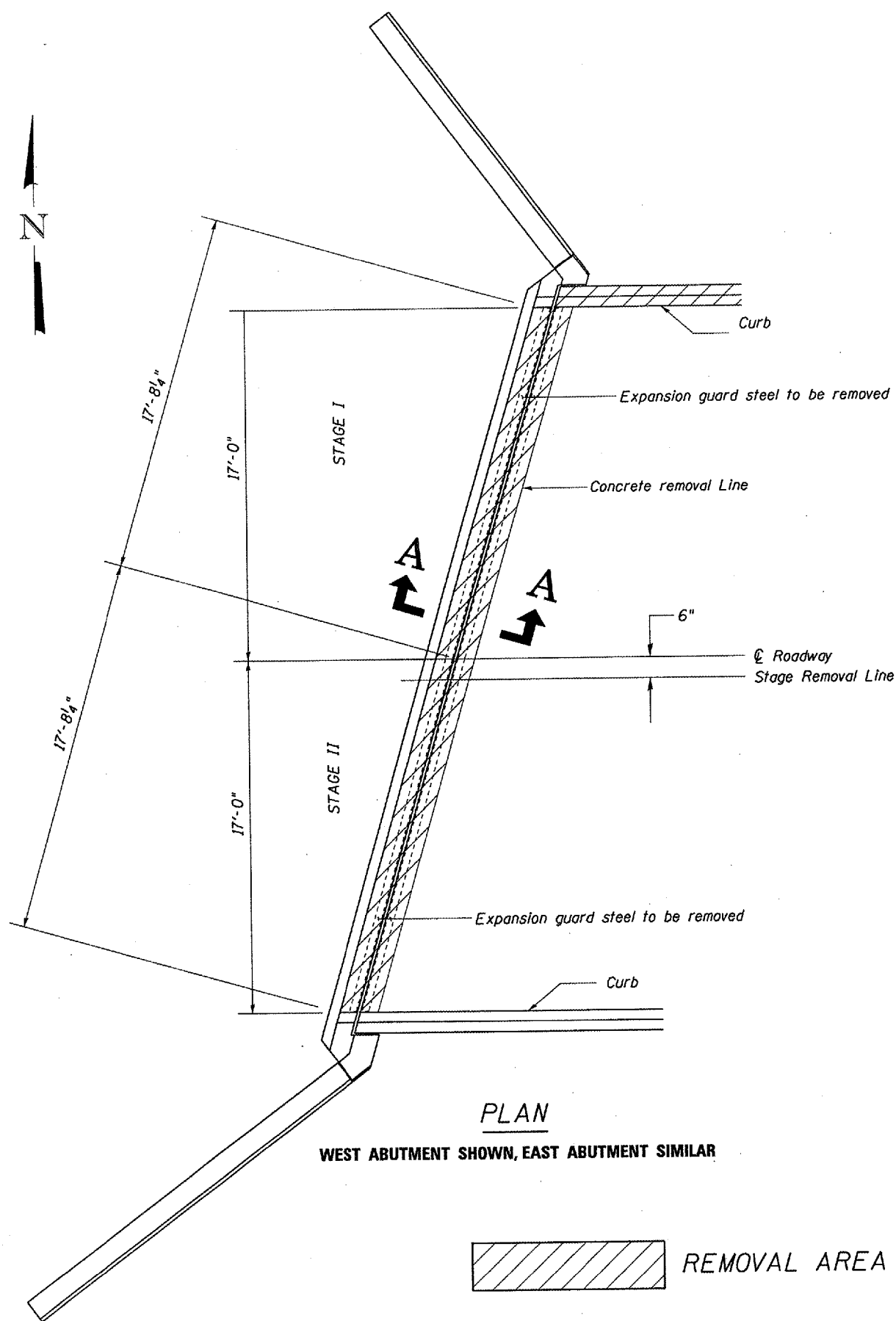
NOTES:

Plan dimensions and details relative to existing structure have been taken from existing plans and are subject to nominal construction variations. It shall be the Contractor's responsibility to verify such dimensions and details in the field and make necessary approved adjustments prior to construction or ordering of materials. Such variations shall not be cause for additional compensation for a change in the scope of the work, however, the Contractor will be paid for the quantity actually furnished at the unit price bid for the work.

Expansion joint plates and attached bars shall be removed and become the property of the contractor. Cost shall be included with "Concrete Removal"

Existing reinforcement extending into removal area, that are specified to remain in place shall be cleaned, straightened and incorporated into the new concrete. Reinforcement bars that are to remain in place, which are damaged during concrete removal operations shall be replaced using approved bar splicer or anchorage system. Cost shall be included with Concrete Removal

Existing coil loops shall remain in place. If the coil loops are damaged during removal operations, they shall be repaired or replaced as directed by the Engineer.



REVISIONS	
NAME	DATE

ILLINOIS DEPARTMENT OF TRANSPORTATION
EXISTING ABUTMENT DETAILS
 FAP ROUTE 317 SECTION (25B-1)I
 LIVINGSTON COUNTY
 STA. 473+87
 DATE 09/21/2005 DRAWN BY RW

DATE: 06/21/2005
FILE: c:\projects\cm87\cm301\deta\ls.dgn