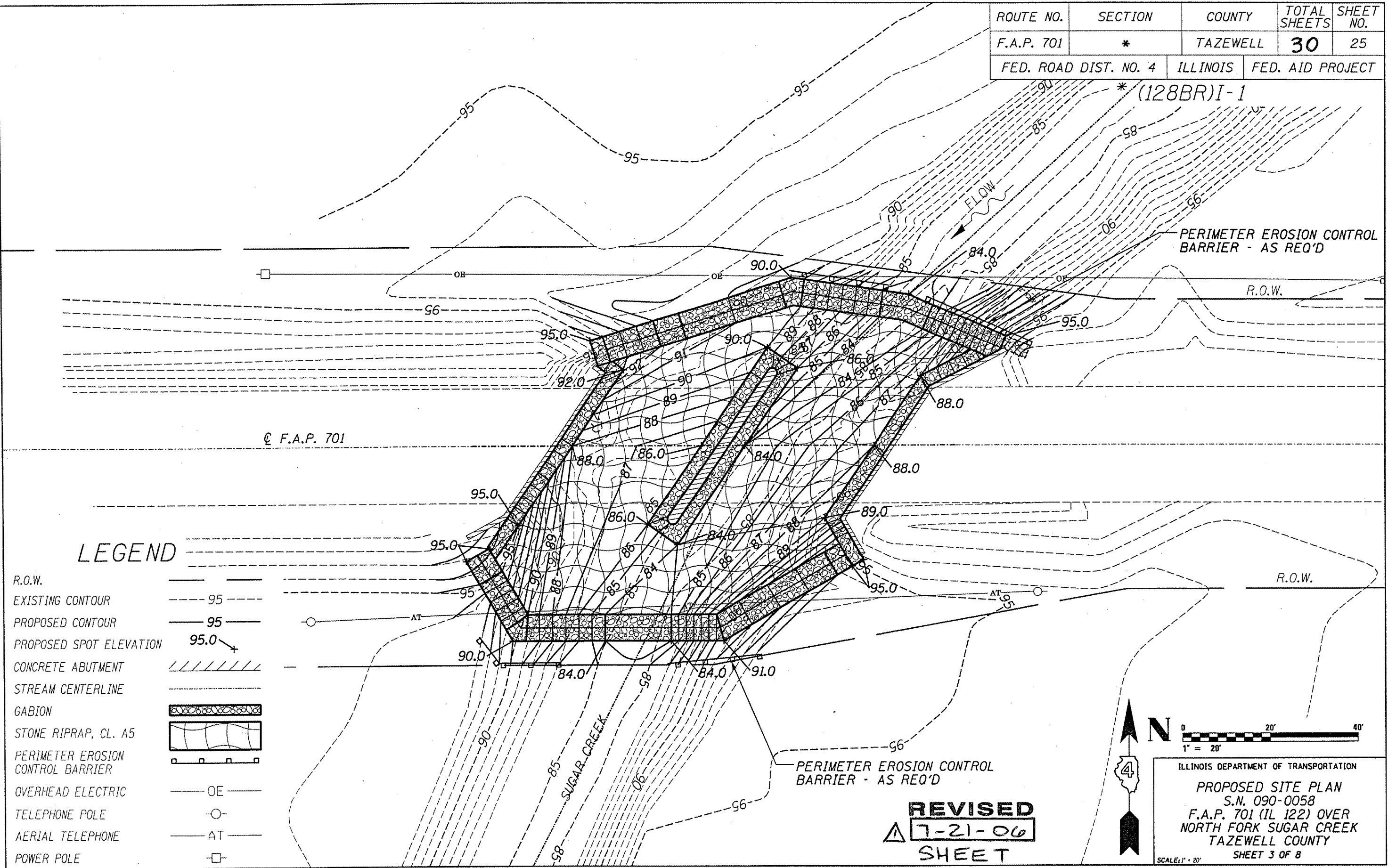


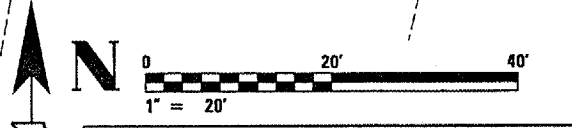
ROUTE NO.	SECTION	COUNTY	TOTAL SHEETS	SHEET NO.
F.A.P. 701	*	TAZEWELL	30	25
FED. ROAD DIST. NO. 4		ILLINOIS	FED. AID PROJECT	

(128BR)I-1



LEGEND

- R.O.W. —————
- EXISTING CONTOUR - - - - 95
- PROPOSED CONTOUR ——— 95
- PROPOSED SPOT ELEVATION 95.0 ↘
- CONCRETE ABUTMENT // / / / /
- STREAM CENTERLINE - - - - -
- GABION [Cross-hatch pattern]
- STONE RIPRAP, CL. A5 [Wavy pattern]
- PERIMETER EROSION CONTROL BARRIER [Square symbols]
- OVERHEAD ELECTRIC ——— OE ———
- TELEPHONE POLE ——— O ———
- AERIAL TELEPHONE ——— AT ———
- POWER POLE ——— □ ———



ILLINOIS DEPARTMENT OF TRANSPORTATION
PROPOSED SITE PLAN
 S.N. 090-0058
 F.A.P. 701 (IL 122) OVER
 NORTH FORK SUGAR CREEK
 TAZEWELL COUNTY
 SHEET 3 OF 8

REVISED
 7-21-06
SHEET