

F.A. RTE.	SECTION	COUNTY	TOTAL SHEETS	SHEET NO.
*	**	***	310	63

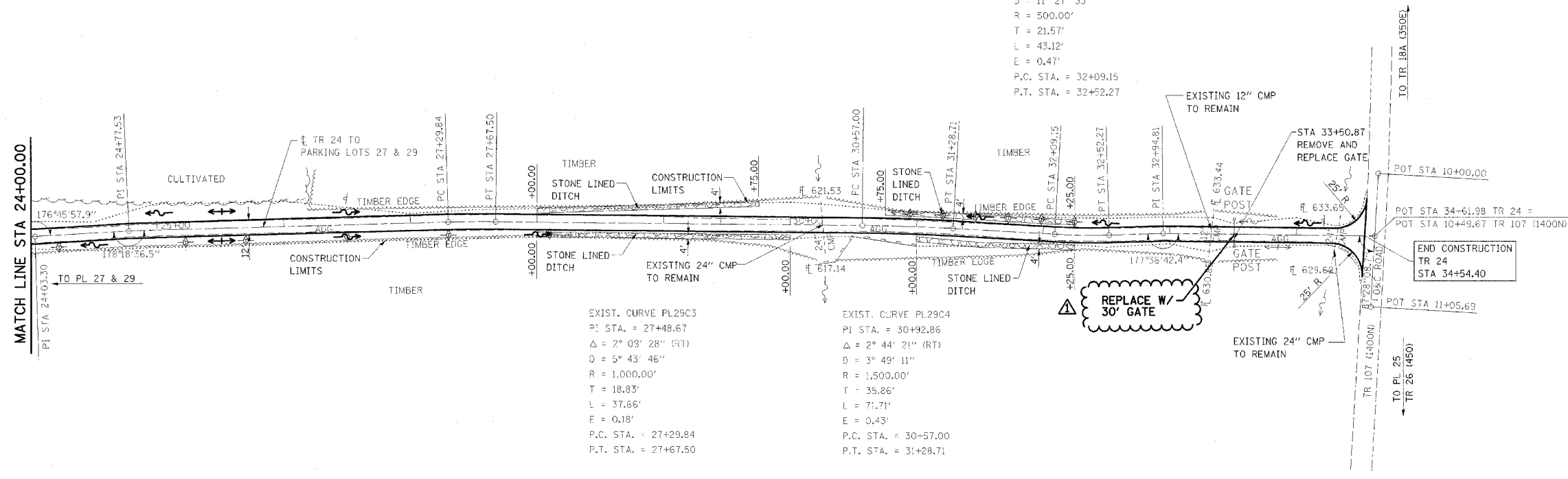
CONTRACT NO. 74155

- * PARK ROADS
- ** SFWA PARK ROADS 2003-1
- *** MOULTRIE AND SHELBY

EXIST. CURVE PL2905
 P.I. STA. = 32+30.72
 $\Delta = 4^\circ 56' 27''$ (LT)
 $D = 11^\circ 27' 33''$
 $R = 500.00'$
 $T = 21.57'$
 $L = 43.12'$
 $E = 0.47'$
 P.C. STA. = 32+09.15
 P.T. STA. = 32+52.27

EXIST. CURVE PL2903
 P.I. STA. = 27+48.67
 $\Delta = 2^\circ 09' 28''$ (RT)
 $D = 5^\circ 43' 46''$
 $R = 1,000.00'$
 $T = 18.83'$
 $L = 37.66'$
 $E = 0.18'$
 P.C. STA. = 27+29.84
 P.T. STA. = 27+67.50

EXIST. CURVE PL2904
 P.I. STA. = 30+92.86
 $\Delta = 2^\circ 44' 21''$ (RT)
 $D = 3^\circ 49' 11''$
 $R = 1,500.00'$
 $T = 35.26'$
 $L = 71.71'$
 $E = 0.43'$
 P.C. STA. = 30+57.00
 P.T. STA. = 31+28.71



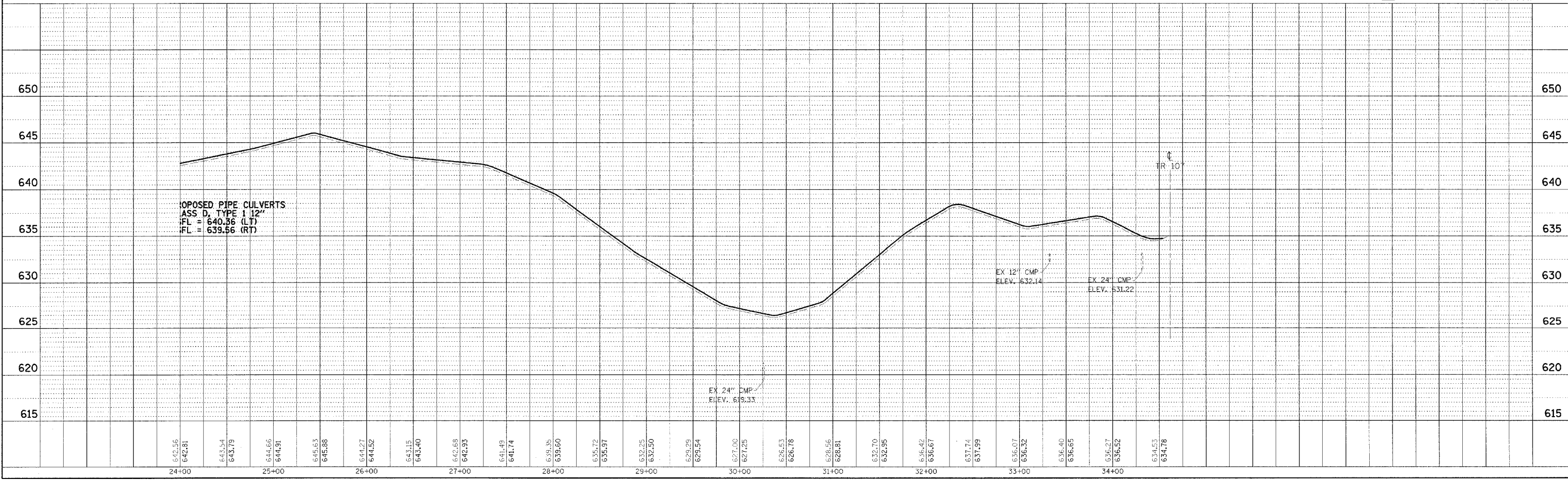
NOTE:
 TR 24
 STA 1+00.34 TO STA 34+54.40
 SURFACE IMPROVEMENTS,
 ADD 3" AGGREGATE



△ - REVISED BY FGI 11/23/2005

PLAN	DATE
SURVEYED	
ALIGNED	
CHECKED	
BY	
DATE	
NOTE BOOK NO.	
ADD FILE NAME	

PROFILE	DATE
SURVEYED	
ALIGNED	
CHECKED	
BY	
DATE	
NOTE BOOK NO.	
ADD FILE NAME	



WEST OKAW FISH & WILDLIFE UNIT PLAN AND PROFILE, TR 24 TO PARKING LOTS 27 & 29