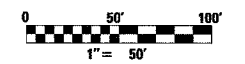


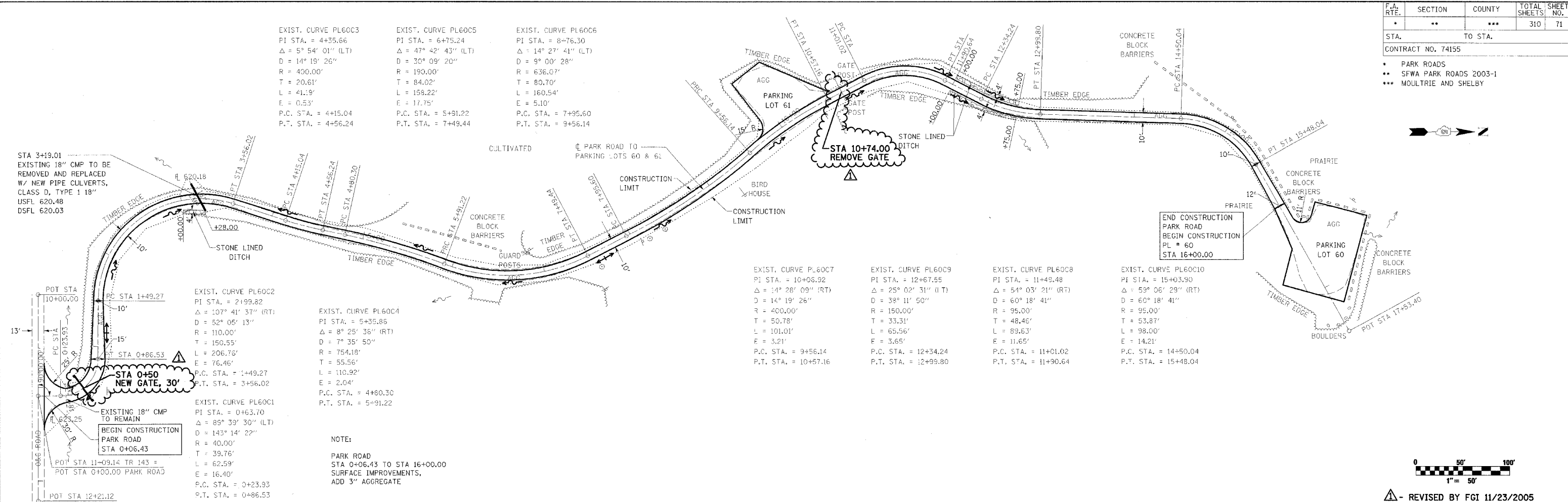
F.A. RTE.	SECTION	COUNTY	TOTAL SHEETS	SHEET NO.
..	310	71

CONTRACT NO. 74155

• PARK ROADS
 •• SFWA PARK ROADS 2003-1
 ••• MOULTRIE AND SHELBY



▲ - REVISED BY FGI 11/23/2005



STA 3+19.01
 EXISTING 18" CMP TO BE
 REMOVED AND REPLACED
 W/ NEW PIPE CULVERTS,
 CLASS D, TYPE 1 18"
 USFL 620.48
 DSFL 620.03

POT STA 11+09.14 TR 143 =
 POT STA 0+00.00 PARK ROAD

POT STA 12+12.12

EXIST. CURVE PL60C2
 PI STA. = 2+199.82
 Δ = 107° 41' 37" (RT)
 D = 52° 05' 13"
 R = 110.00'
 T = 150.55'
 L = 206.76'
 E = 76.46'
 P.C. STA. = 1+49.27
 P.T. STA. = 3+56.02

EXIST. CURVE PL60C1
 PI STA. = 0+63.70
 Δ = 89° 39' 30" (LT)
 D = 143° 14' 22"
 R = 40.00'
 T = 39.76'
 L = 62.59'
 E = 16.40'
 P.C. STA. = 0+23.93
 P.T. STA. = 0+86.53

EXIST. CURVE PL60C4
 PI STA. = 5+35.86
 Δ = 8° 25' 35" (RT)
 D = 7° 35' 50"
 R = 754.18'
 T = 55.56'
 L = 110.92'
 E = 2.04'
 P.C. STA. = 4+80.30
 P.T. STA. = 5+91.22

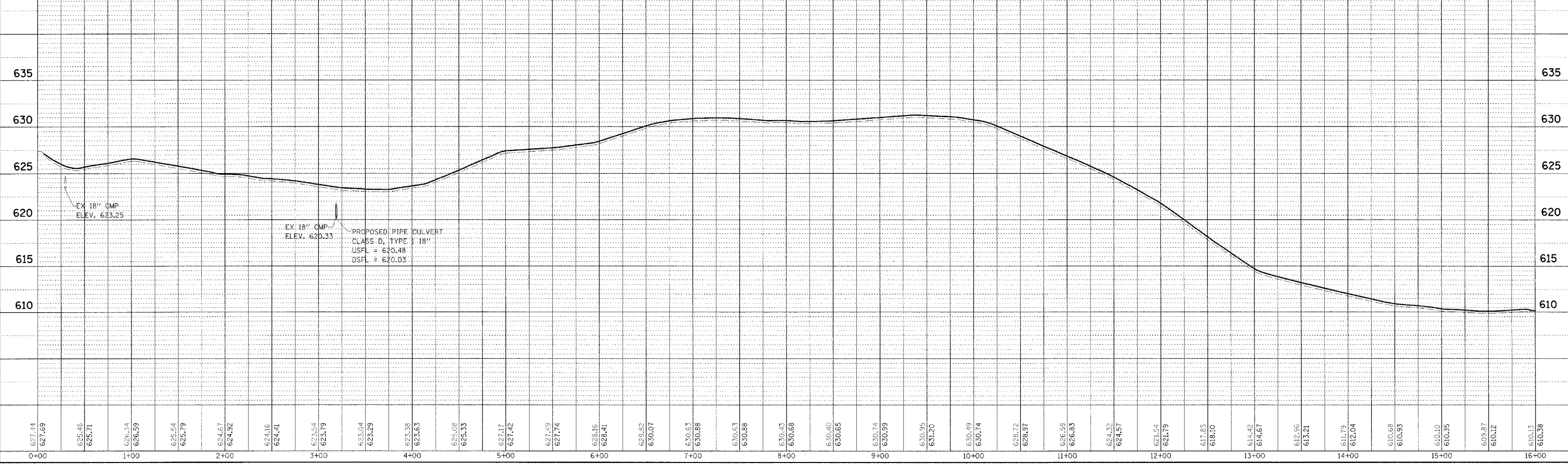
NOTE:
 PARK ROAD
 STA 0+06.43 TO STA 16+00.00
 SURFACE IMPROVEMENTS,
 ADD 3" AGGREGATE

EXIST. CURVE PL60C7
 PI STA. = 10+06.92
 Δ = 14° 28' 09" (RT)
 D = 14° 19' 26"
 R = 400.00'
 T = 50.78'
 L = 101.01'
 E = 3.21'
 P.C. STA. = 9+56.14
 P.T. STA. = 10+57.16

EXIST. CURVE PL60C9
 PI STA. = 12+67.55
 Δ = 25° 02' 31" (LT)
 D = 38° 11' 50"
 R = 150.00'
 T = 33.31'
 L = 65.56'
 E = 3.65'
 P.C. STA. = 12+34.24
 P.T. STA. = 12+99.80

EXIST. CURVE PL60C8
 PI STA. = 11+49.48
 Δ = 54° 03' 21" (RT)
 D = 60° 18' 41"
 R = 95.00'
 T = 48.46'
 L = 89.63'
 E = 11.65'
 P.C. STA. = 11+01.02
 P.T. STA. = 11+90.64

EXIST. CURVE PL60C10
 PI STA. = 15+03.90
 Δ = 59° 06' 29" (RT)
 D = 60° 18' 41"
 R = 95.00'
 T = 53.87'
 L = 98.00'
 E = 14.21'
 P.C. STA. = 14+50.04
 P.T. STA. = 15+48.04



635

630

625

620

615

610

627.44
627.69
625.46
625.71
626.34
626.59
625.54
625.79
624.67
624.92
624.16
624.41
624.54
624.79
623.04
623.29
623.38
623.63
625.08
625.33
627.17
627.42
627.49
627.74
628.16
628.41
629.82
630.07
630.63
630.88
630.63
630.88
630.43
630.68
630.40
630.65
630.74
630.99
630.95
631.20
630.49
630.74
628.72
628.97
626.58
626.83
624.32
624.57
621.54
621.79
617.85
618.10
614.42
614.67
612.96
613.21
611.79
612.04
610.68
610.93
610.10
610.35
609.87
610.12
610.13
610.38

0+00 1+00 2+00 3+00 4+00 5+00 6+00 7+00 8+00 9+00 10+00 11+00 12+00 13+00 14+00 15+00 16+00