

F.A. RTE.	SECTION	COUNTY	TOTAL SHEETS	SHEET NO.
*	**	***	310	74

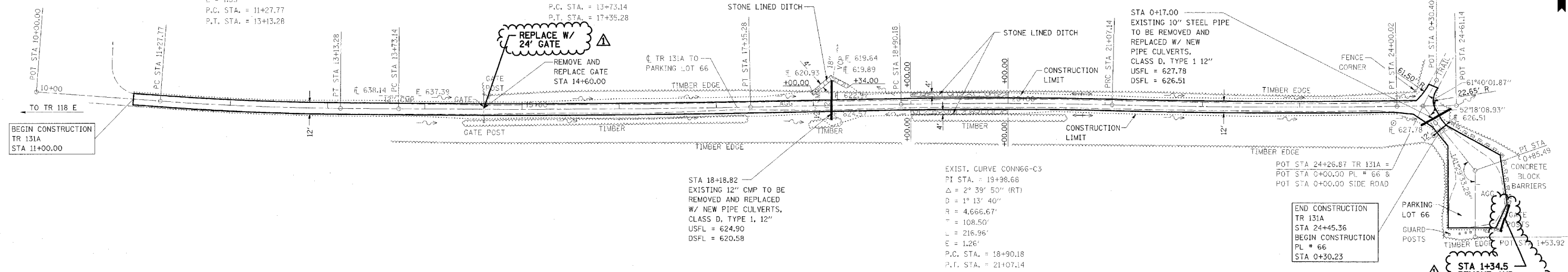
STA. TO STA.
CONTRACT NO. 74155

- PARK ROADS
- SFWA PARK ROADS 2003-1
- MOUTRIE AND SHELBY

EXIST. CURVE CONN66-C1
 PI STA. = 12+20.56
 $\Delta = 3^\circ 56' 12''$ (LT)
 $D = 2^\circ 07' 19''$
 $R = 2,700.00'$
 $T = 92.79'$
 $L = 185.51'$
 $E = 1.59'$
 P.C. STA. = 11+27.77
 P.T. STA. = 13+13.28

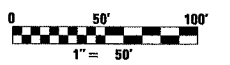
EXIST. CURVE CONN66-C2
 PI STA. = 15+54.22
 $\Delta = 1^\circ 35' 46''$ (LT)
 $D = 0^\circ 26' 27''$
 $R = 13,000.00'$
 $T = 181.08'$
 $L = 362.14'$
 $E = 1.26'$
 P.C. STA. = 13+73.14
 P.T. STA. = 17+35.28

EXIST. CURVE CONN66-C4
 PI STA. = 22+53.60
 $\Delta = 2^\circ 31' 28''$ (LT)
 $D = 0^\circ 51' 43''$
 $R = 6,646.97'$
 $T = 146.46'$
 $L = 292.87'$
 $E = 1.61'$
 P.C. STA. = 21+07.14
 P.T. STA. = 24+00.02

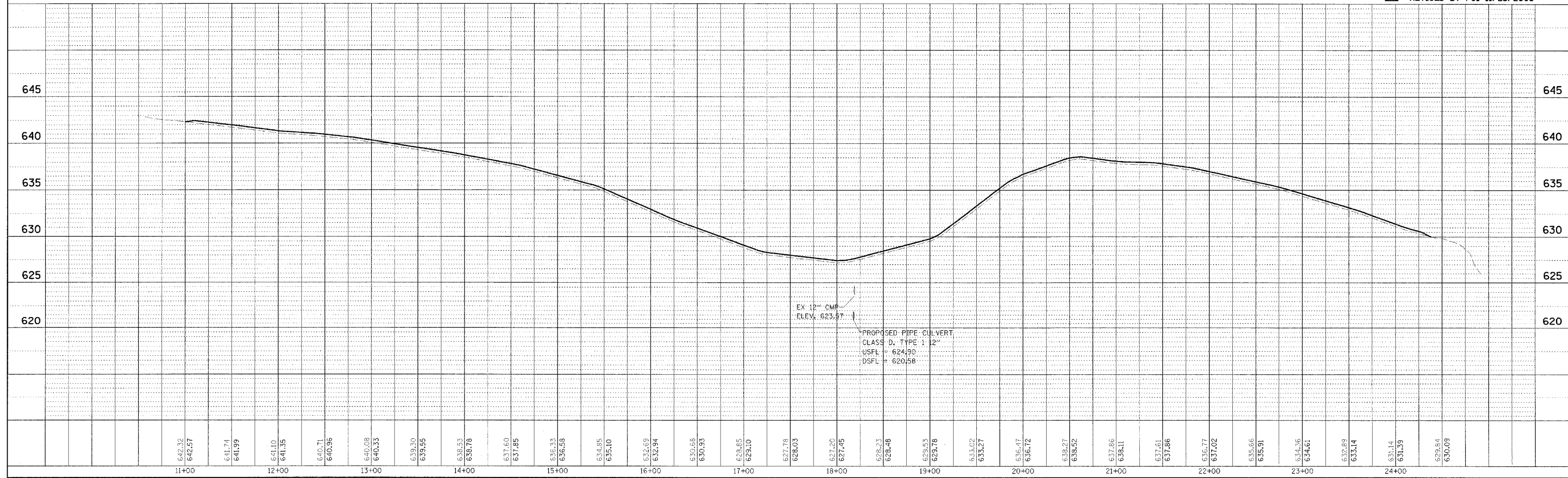


NOTE:
 TR 131A
 STA 11+00.00 TO STA 24+45.36
 SURFACE IMPROVEMENTS,
 ADD 3" AGGREGATE

END CONSTRUCTION
 TR 131A
 STA 24+45.36
 BEGIN CONSTRUCTION
 PL # 66
 STA 0+30.23



▲ - REVISED BY FGI 11/23/2005



KASKASKIA FISH & WILDLIFE UNIT PLAN AND PROFILE, TR 131A TO PARKING LOT 66

DATE	BY	REVISION

DATE	BY	REVISION