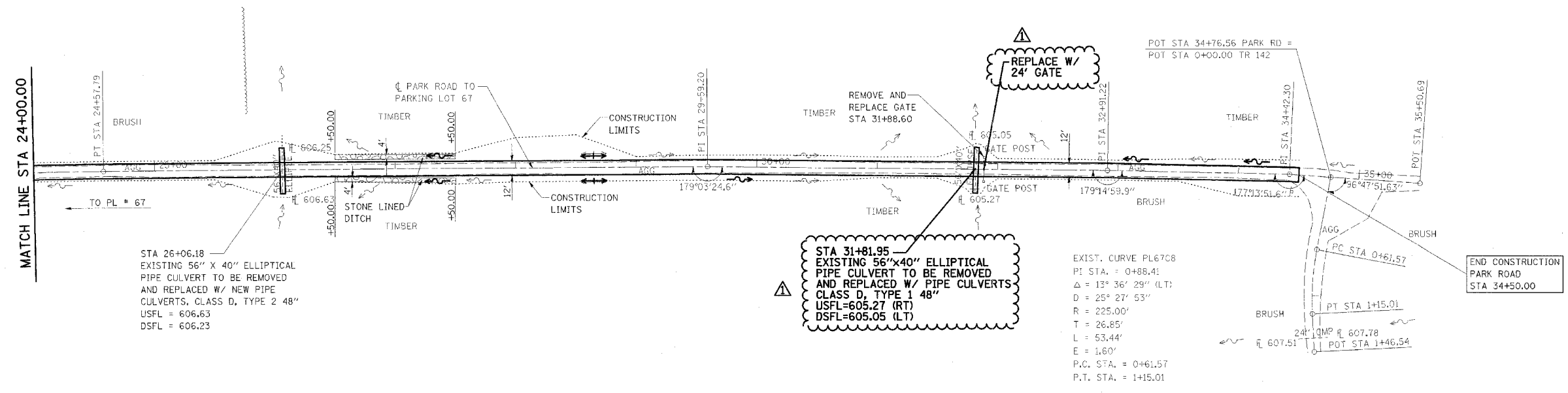


F.A. RTE.	SECTION	COUNTY	TOTAL SHEETS	SHEET NO.
*	**	***	310	77
STA. TO STA.			CONTRACT NO. 74155	
<ul style="list-style-type: none"> <li>* PARK ROADS</li> <li>** SFWA PARK ROADS 2003-1</li> <li>*** MOULTRIE AND SHELBY</li> </ul>				

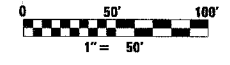


STA 26+06.18  
EXISTING 56" X 40" ELLIPTICAL  
PIPE CULVERT TO BE REMOVED  
AND REPLACED W/ NEW PIPE  
CULVERTS, CLASS D, TYPE 2 48"  
USFL = 606.63  
DSFL = 606.23

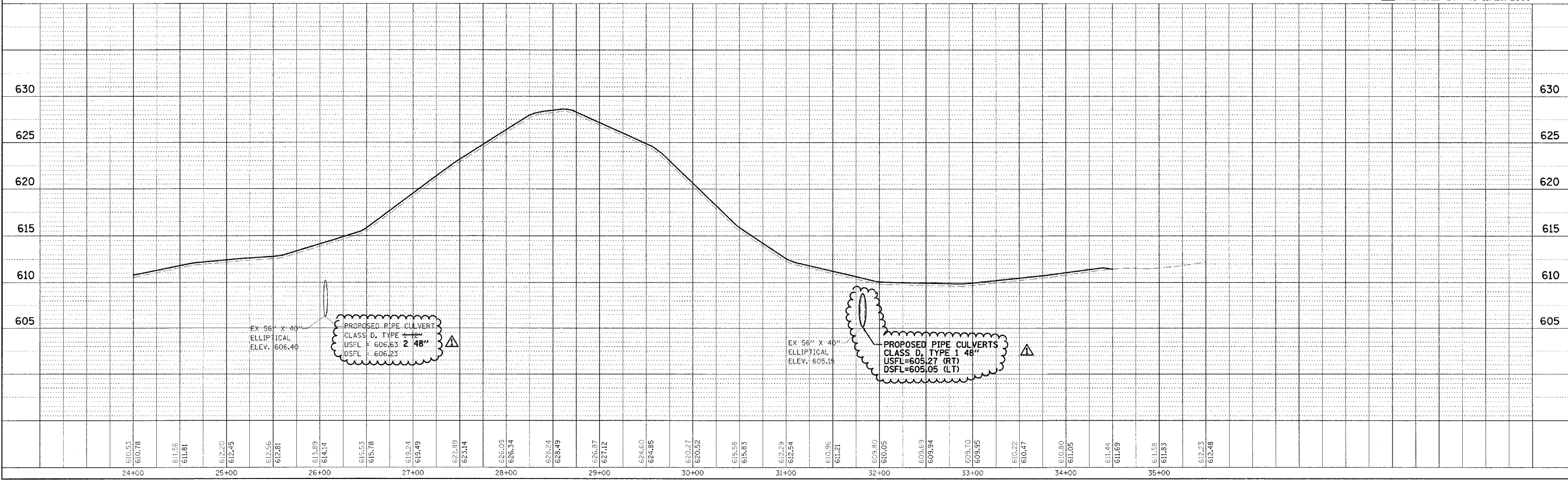
STA 31+81.95  
EXISTING 56" X 40" ELLIPTICAL  
PIPE CULVERT TO BE REMOVED  
AND REPLACED W/ PIPE CULVERTS  
CLASS D, TYPE 1 48"  
USFL=605.27 (RT)  
DSFL=605.05 (LT)

EXIST. CURVE PL67C8  
PI STA. = 0+88.41  
 $\Delta = 13^\circ 36' 29"$  (LT)  
D = 25° 27' 53"  
R = 225.00'  
T = 26.85'  
L = 53.44'  
E = 1.60'  
P.C. STA. = 0+61.57  
P.T. STA. = 1+15.01

NOTE:  
PARK ROAD  
STA 2+24.95 TO STA 34+50.00  
SURFACE IMPROVEMENTS,  
ADD 3" AGGREGATE



REVISOR'S MARK:  $\Delta$  - REVISED BY FGI 11/23/2005



EX 56" X 40" ELLIPTICAL ELEV. 606.40  
PROPOSED PIPE CULVERT CLASS D, TYPE 2 48" USFL = 606.63 DSFL = 606.23

EX 56" X 40" ELLIPTICAL ELEV. 605.15  
PROPOSED PIPE CULVERTS CLASS D, TYPE 1 48" USFL=605.27 (RT) DSFL=605.05 (LT)

PLAN	DATE
DESIGNED	
CHECKED	
IN CHARGE	
DATE	

PROFILE	DATE
DESIGNED	
CHECKED	
IN CHARGE	
DATE	