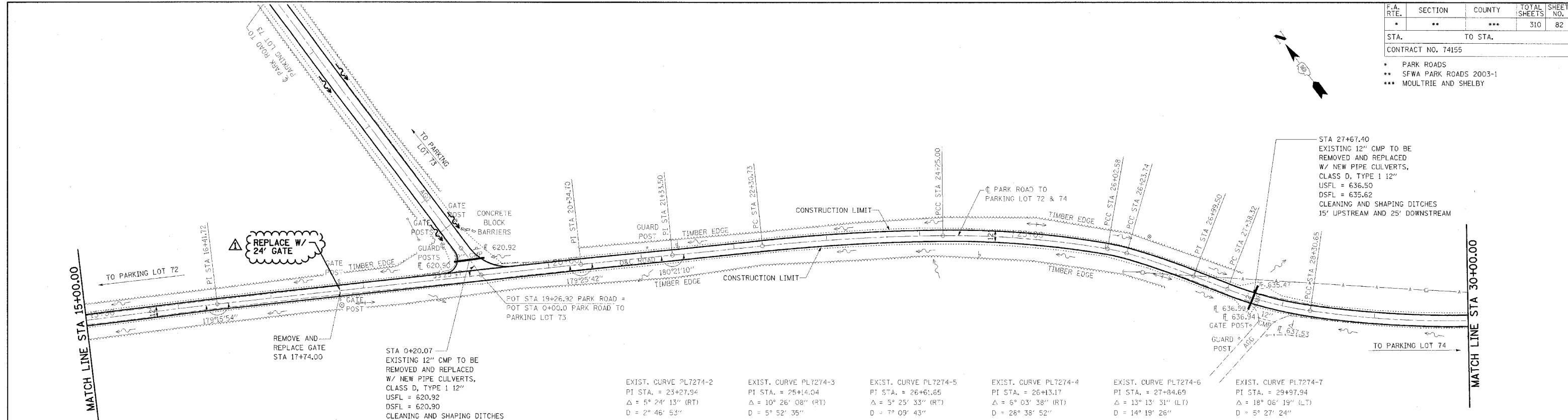


F.A. RTE.	SECTION	COUNTY	TOTAL SHEETS	SHEET NO.
*	**	***	310	82
STA. TO STA.			CONTRACT NO. 74155	
* PARK ROADS ** SFWA PARK ROADS 2003-1 *** MOULTRIE AND SHELBY				



NOTE:

PARK ROAD
STA 0+00.00 TO STA 41+68.57
SCARIFY ROAD AND PARKING
LOT 72, ADD 3" AGGREGATE
AND ADD A-2 TREATMENT

STA 0+20.07
EXISTING 12" CMP TO BE
REMOVED AND REPLACED
W/ NEW PIPE CULVERTS,
CLASS D, TYPE 1 12"
USFL = 620.92
DSFL = 620.90
CLEANING AND SHAPING DITCHES
25' UPSTREAM AND DOWNSTREAM

EXIST. CURVE PL7274-2
PI STA. = 23+27.94
Δ = 5° 24' 13" (RT)
D = 2° 46' 53"
R = 2,060.00'
T = 97.21'
L = 194.28'
E = 2.29'
P.C. STA. = 22+30.73
P.T. STA. = 24+25.00

EXIST. CURVE PL7274-3
PI STA. = 25+14.04
Δ = 10° 26' 08" (RT)
D = 5° 52' 35"
R = 975.00'
T = 89.04'
L = 177.58'
E = 4.06'
P.C. STA. = 24+25.00
P.T. STA. = 26+02.58

EXIST. CURVE PL7274-5
PI STA. = 26+61.65
Δ = 5° 25' 33" (RT)
D = 7° 09' 43"
R = 800.00'
T = 37.91'
L = 75.76'
E = 0.90'
P.C. STA. = 26+23.74
P.T. STA. = 26+99.50

EXIST. CURVE PL7274-4
PI STA. = 26+13.17
Δ = 6° 03' 38" (RT)
D = 28° 38' 52"
R = 200.00'
T = 10.59'
L = 21.16'
E = 0.28'
P.C. STA. = 26+02.58
P.T. STA. = 26+23.74

EXIST. CURVE PL7274-6
PI STA. = 27+84.69
Δ = 13° 13' 31" (LT)
D = 14° 19' 26"
R = 400.00'
T = 46.37'
L = 92.33'
E = 2.68'
P.C. STA. = 27+38.32
P.T. STA. = 28+30.65

EXIST. CURVE PL7274-7
PI STA. = 29+97.94
Δ = 18° 06' 19" (LT)
D = 5° 27' 24"
R = 1,050.00'
T = 167.29'
L = 331.80'
E = 13.24'
P.C. STA. = 28+30.65
P.T. STA. = 31+62.45



▲ - REVISED BY FGI 11/23/2005

