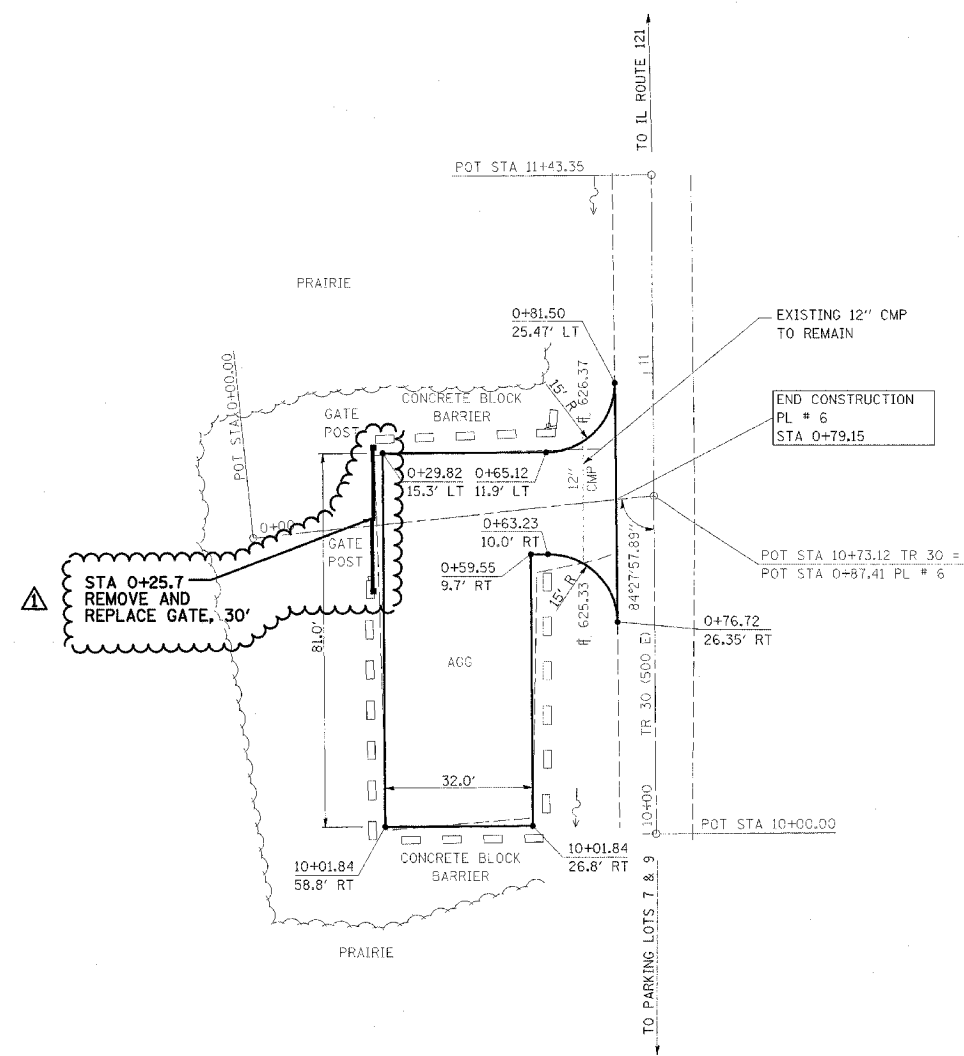


F.A. RTE.	SECTION	COUNTY	TOTAL SHEETS	SHEET NO.
*	**	***	310	90

STA. TO STA.

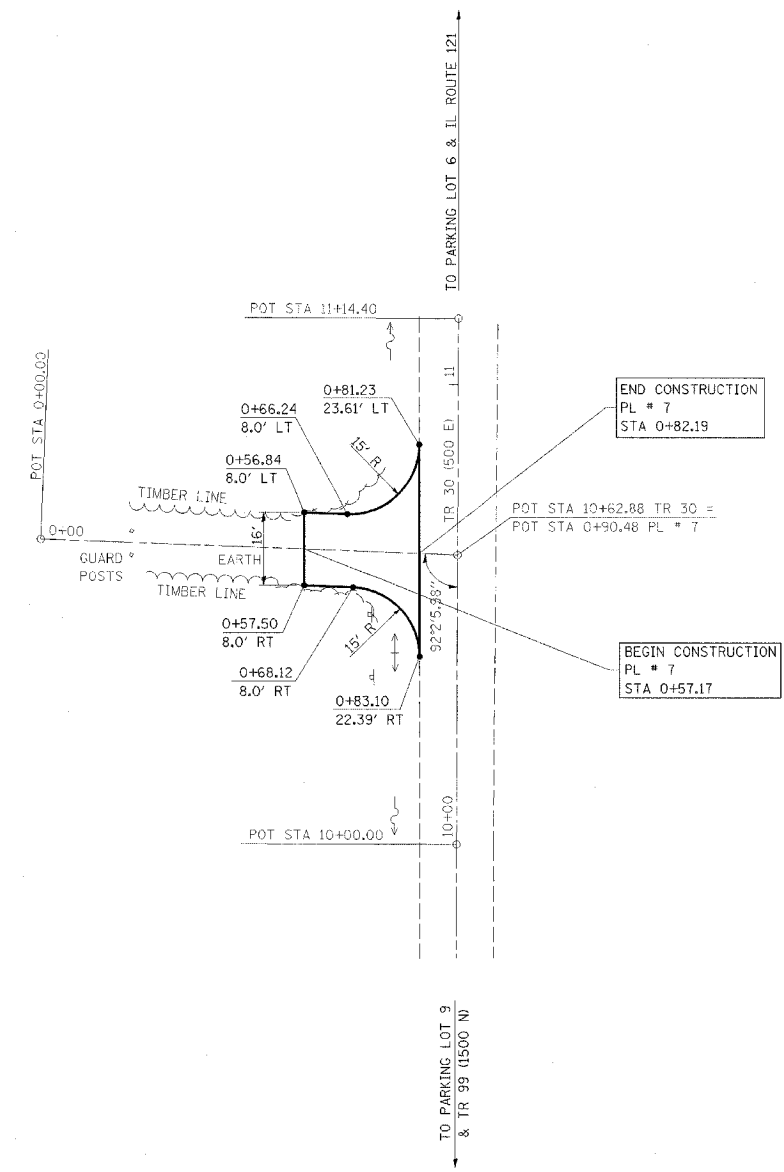
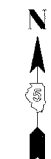
CONTRACT NO. 74155

- PARK ROADS
- SFWA PARK ROADS 2003-1
- MOULTRIE AND SHELBY



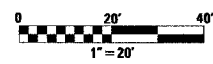
PARKING LOT 6

NOTE:
PARKING LOT 6
END STA 0+79.15
SURFACE IMPROVEMENTS,
ADD 3" AGGREGATE



PARKING LOT 7

NOTE:
PARKING LOT 7
STA 0+57.37 TO STA 0+82.19
SURFACE IMPROVEMENTS,
ADD 3" AGGREGATE



REVISIONS	
NAME	DATE
FGI	11/23/2005

ILLINOIS DEPARTMENT OF TRANSPORTATION
WEST OKAW FISH & WILDLIFE UNIT
PARKING LOT PLAN
PL 6 & PL 7

SCALE: _____
DATE _____

DRAWN BY BANDY
CHECKED BY STEUART