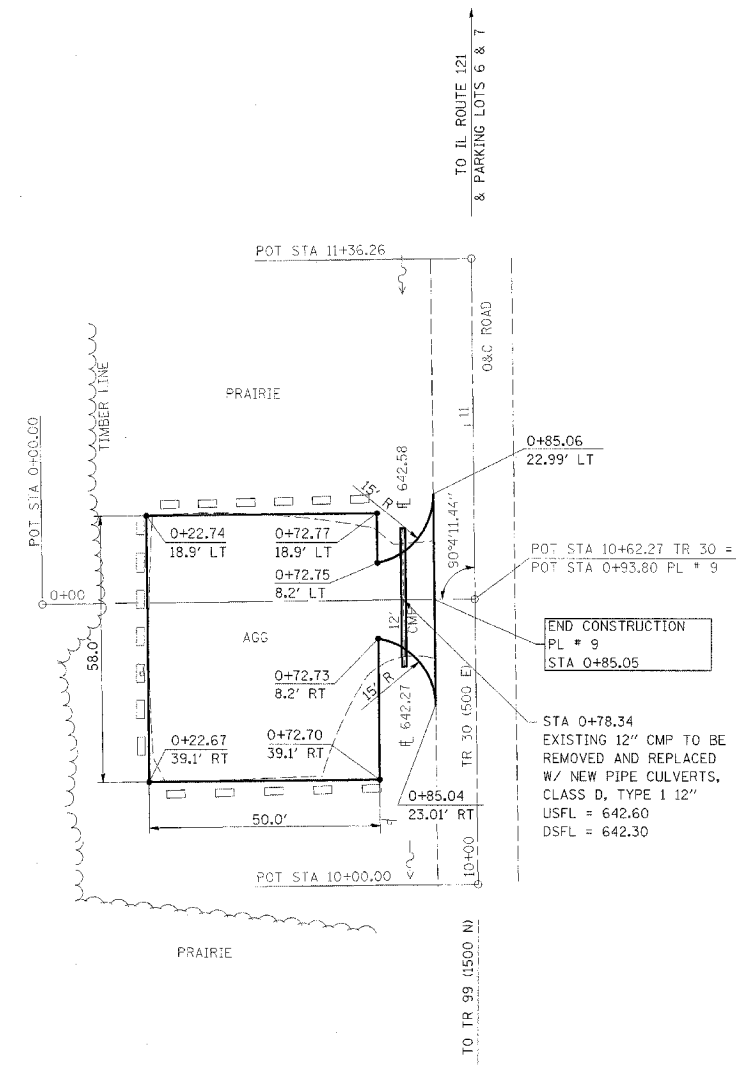


F.A. RTE.	SECTION	COUNTY	TOTAL SHEETS	SHEET NO.
*	**	***	310	91

STA. TO STA.

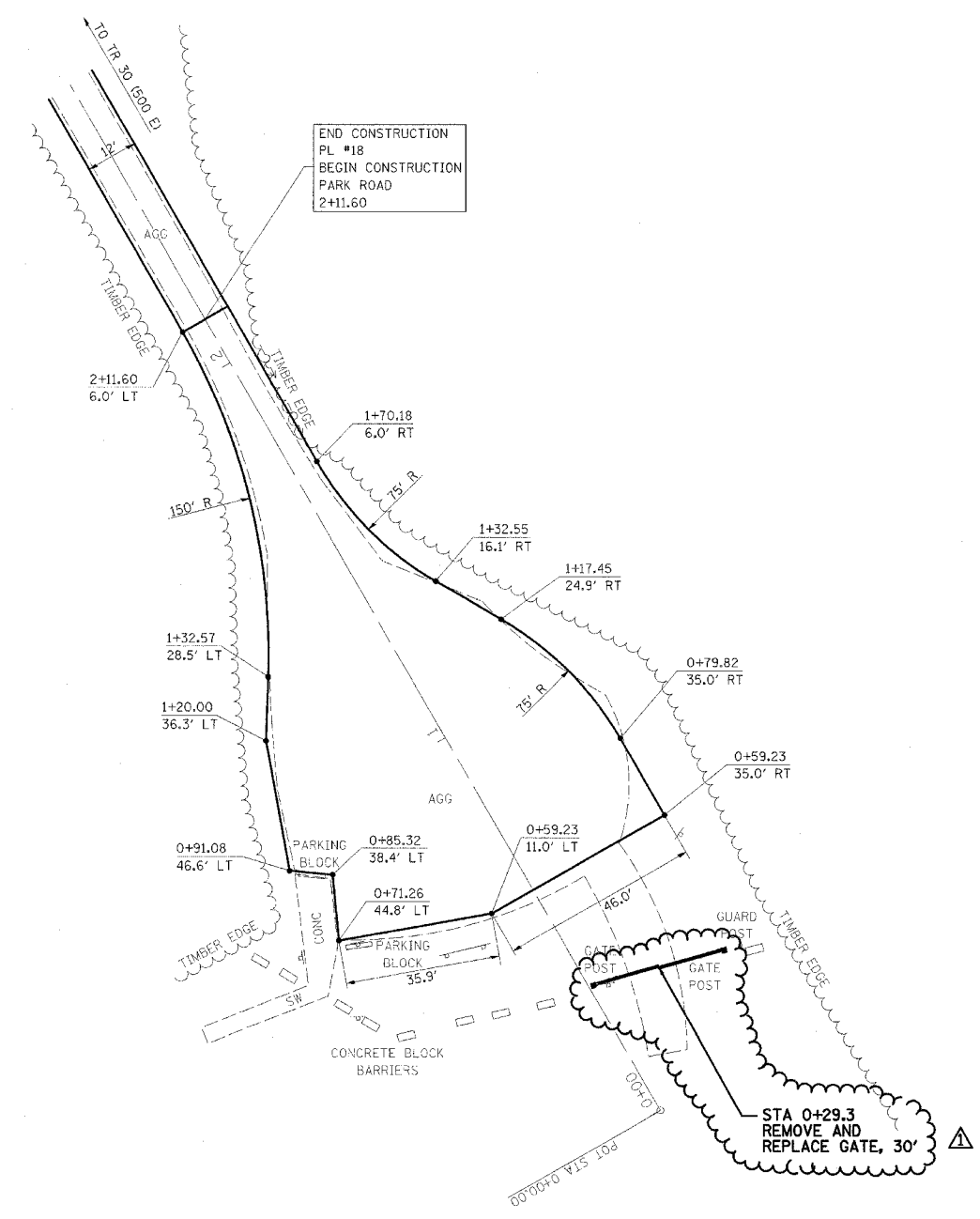
CONTRACT NO. 74155

- \* PARK ROADS
- \*\* SFWA PARK ROADS 2003-1
- \*\*\* MOULTRIE AND SHELBY



**PARKING LOT 9**

NOTE:  
 PARKING LOT 8  
 END STA 0+85.05  
 SURFACE IMPROVEMENTS,  
 ADD 3" AGGREGATE



**PARKING LOT 18  
 MAC MCGEE  
 WATERFOWL AREA**

NOTE:  
 PARKING LOT 18  
 MAC MCGEE WATERFOWL AREA  
 END STA 2+11.60  
 SURFACE IMPROVEMENTS,  
 ADD 3" AGGREGATE



REVISIONS	
NAME	DATE
FGI	11/23/2005

ILLINOIS DEPARTMENT OF TRANSPORTATION  
**WEST OKAW FISH & WILDLIFE UNIT**  
**PARKING LOT PLAN**  
**PL 9 & PL 18**

SCALE: \_\_\_\_\_  
 DATE \_\_\_\_\_

DRAWN BY BANDY  
 CHECKED BY STEUART