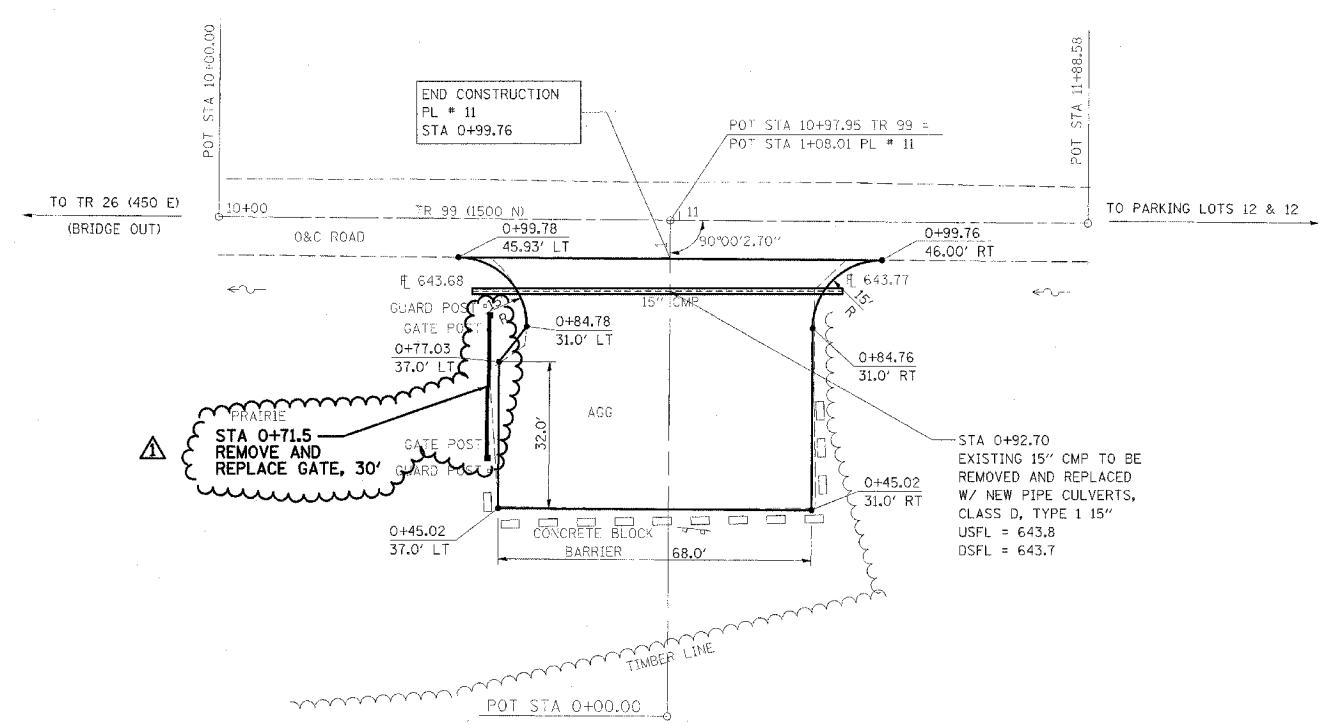


F.A. RTE.	SECTION	COUNTY	TOTAL SHEETS	SHEET NO.
*	**	***	310	93

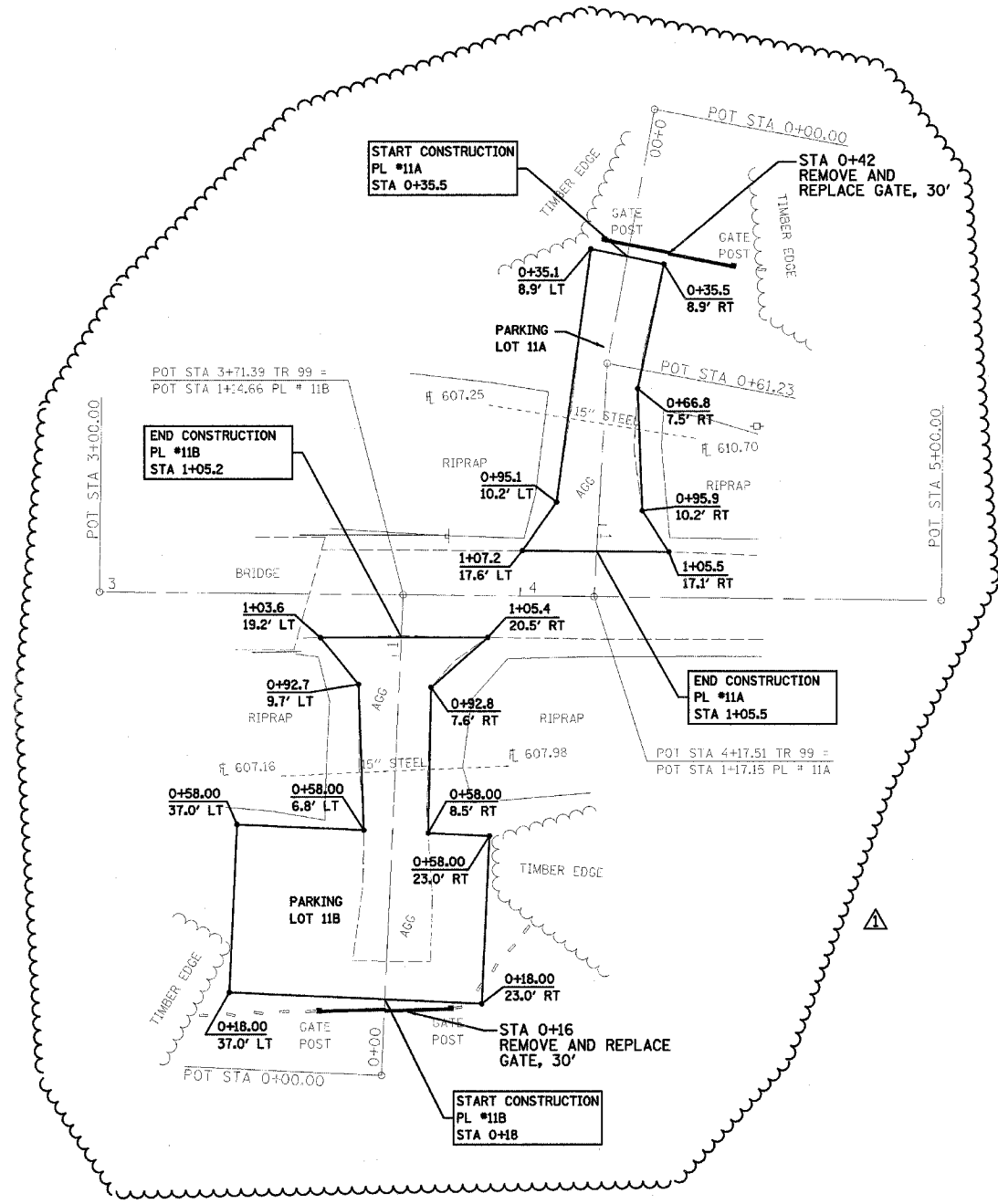
CONTRACT NO. 74155

- * PARK ROADS
- ** SFWA PARK ROADS 2003-1
- *** MOULTRIE AND SHELBY



PARKING LOT 11

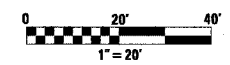
NOTE:
PARKING LOT 11
END STA 0+99.76
SURFACE IMPROVEMENTS,
ADD 3" AGGREGATE



PARKING LOT 11A & LOT 11B

NOTE:
PARKING LOT 11A
STA 0+35.5 TO STA 1+05.5
SURFACE IMPROVEMENTS,
ADD 3" AGGREGATE

PARKING LOT 11B
STA 0+18 TO STA 1+05.2
SURFACE IMPROVEMENTS,
ADD 3" AGGREGATE TO AREAS
WITH EXISTING AGGREGATE
SURFACE. EXCAVATE 5", ADD
8" AGGREGATE TO AREAS WITH
EXISTING EARTH SURFACE



REVISIONS	
NAME	DATE
FGI	11/23/2005

ILLINOIS DEPARTMENT OF TRANSPORTATION
WEST OKAW FISH & WILDLIFE UNIT
PARKING LOT PLAN
PL 11, PL 11A, PL 11 B

SCALE: _____ DRAWN BY BANDY
DATE _____ CHECKED BY STEUART