

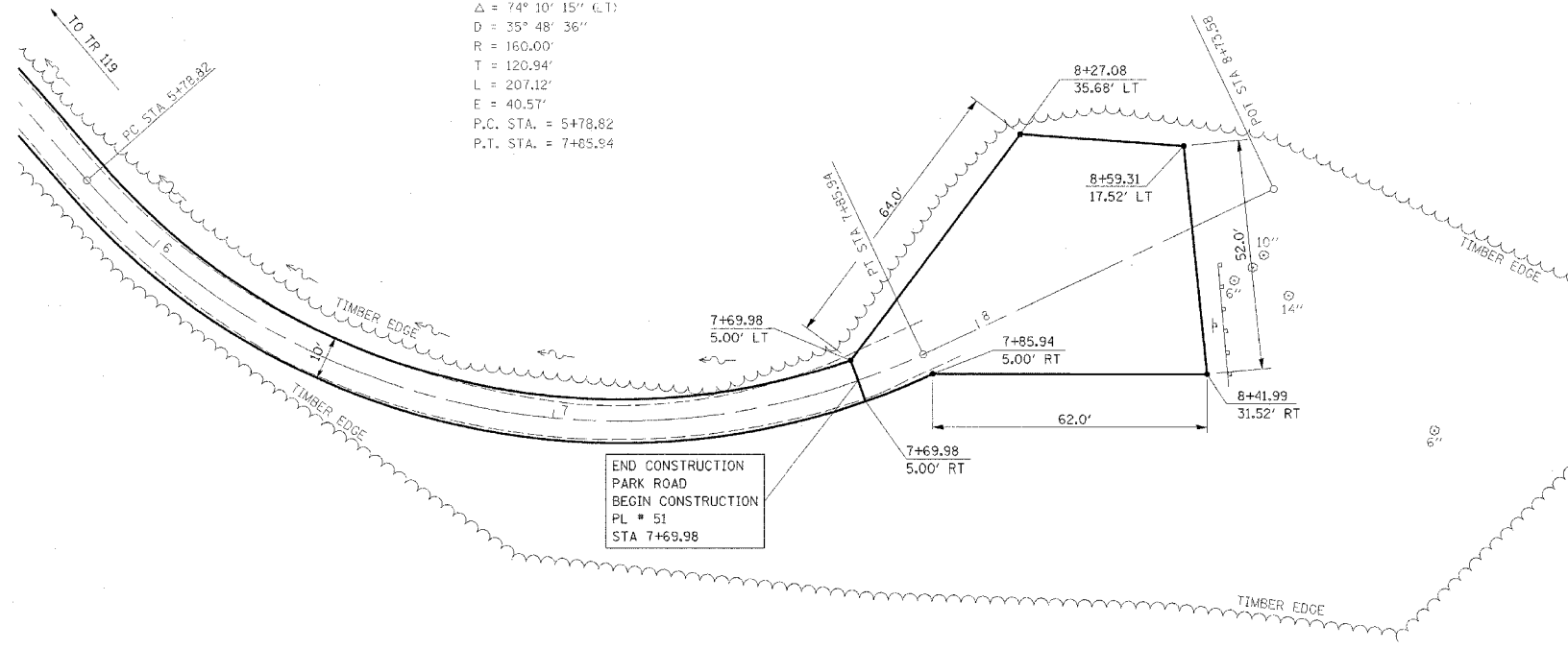
F.A. RTE.	SECTION	COUNTY	TOTAL SHEETS	SHEET NO.
*	**	***	310	103

CONTRACT NO. 74155

- PARK ROADS
- SFWA PARK ROADS 2003-1
- MOULTRIE AND SHELBY

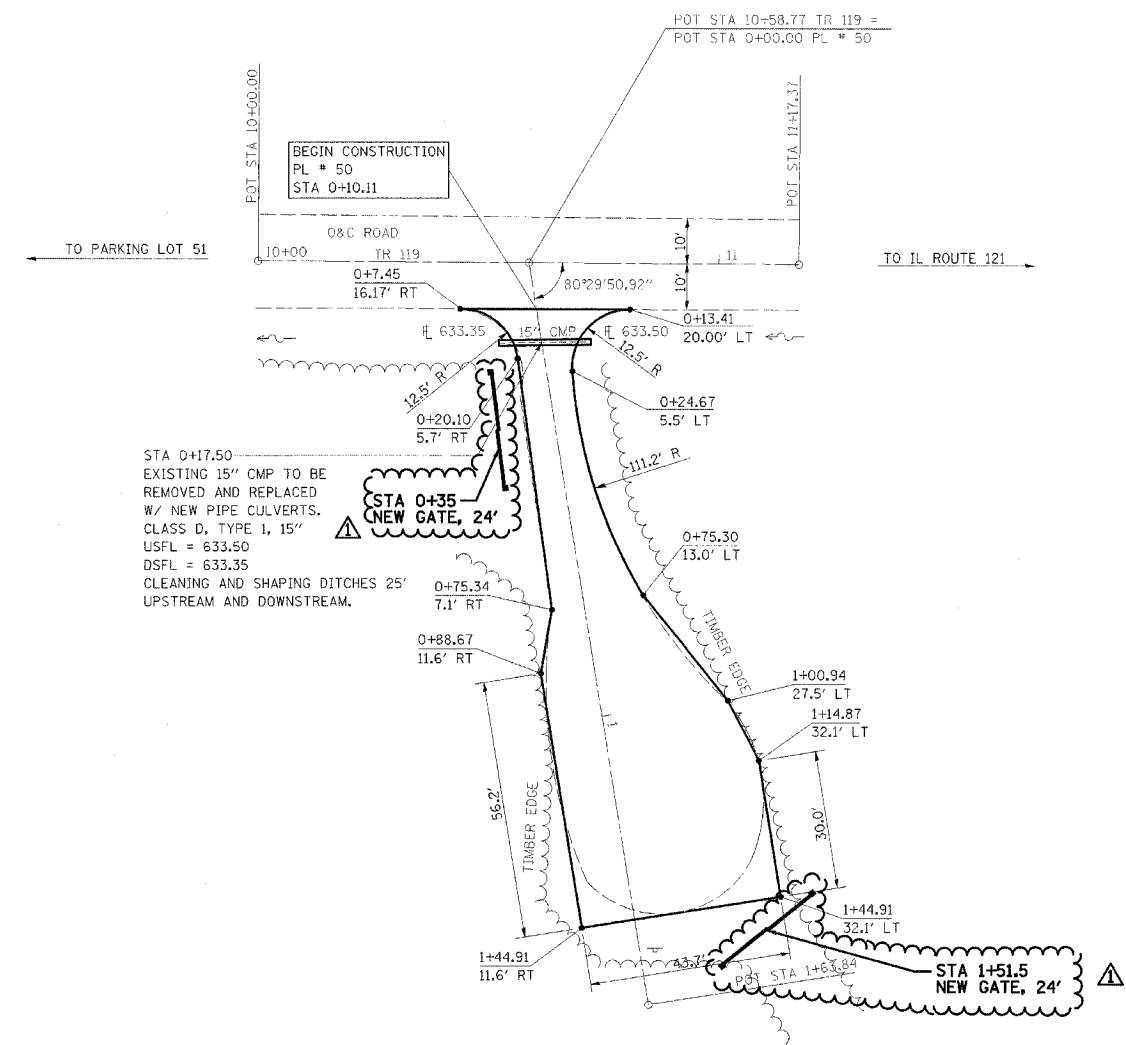


EXIST. CURVE PL51-C4  
 PI STA. = 6+99.76  
 $\Delta = 74^\circ 10' 15''$  (C.T.)  
 $D = 35^\circ 48' 36''$   
 $R = 160.00'$   
 $T = 120.94'$   
 $L = 207.12'$   
 $E = 40.57'$   
 P.C. STA. = 5+78.82  
 P.T. STA. = 7+65.94



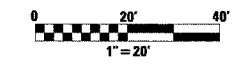
**PARKING LOT 51**

NOTE:  
 PARKING LOT 51  
 BEGIN STA 7+69.98  
 SURFACE IMPROVEMENTS,  
 ADD 3" AGGREGATE



**PARKING LOT 50**

NOTE:  
 PARKING LOT 50  
 BEGIN STA 0+10.11  
 SURFACE IMPROVEMENTS,  
 ADD 3" AGGREGATE



REVISIONS	
NAME	DATE
FGI	11/23/2005

ILLINOIS DEPARTMENT OF TRANSPORTATION  
**KASKASKIA FISH & WILDLIFE UNIT**  
**PARKING LOT PLAN**  
**PARKING LOT 50 & 51**

SCALE: \_\_\_\_\_  
 DATE \_\_\_\_\_  
 DRAWN BY BANDY  
 CHECKED BY STEUART