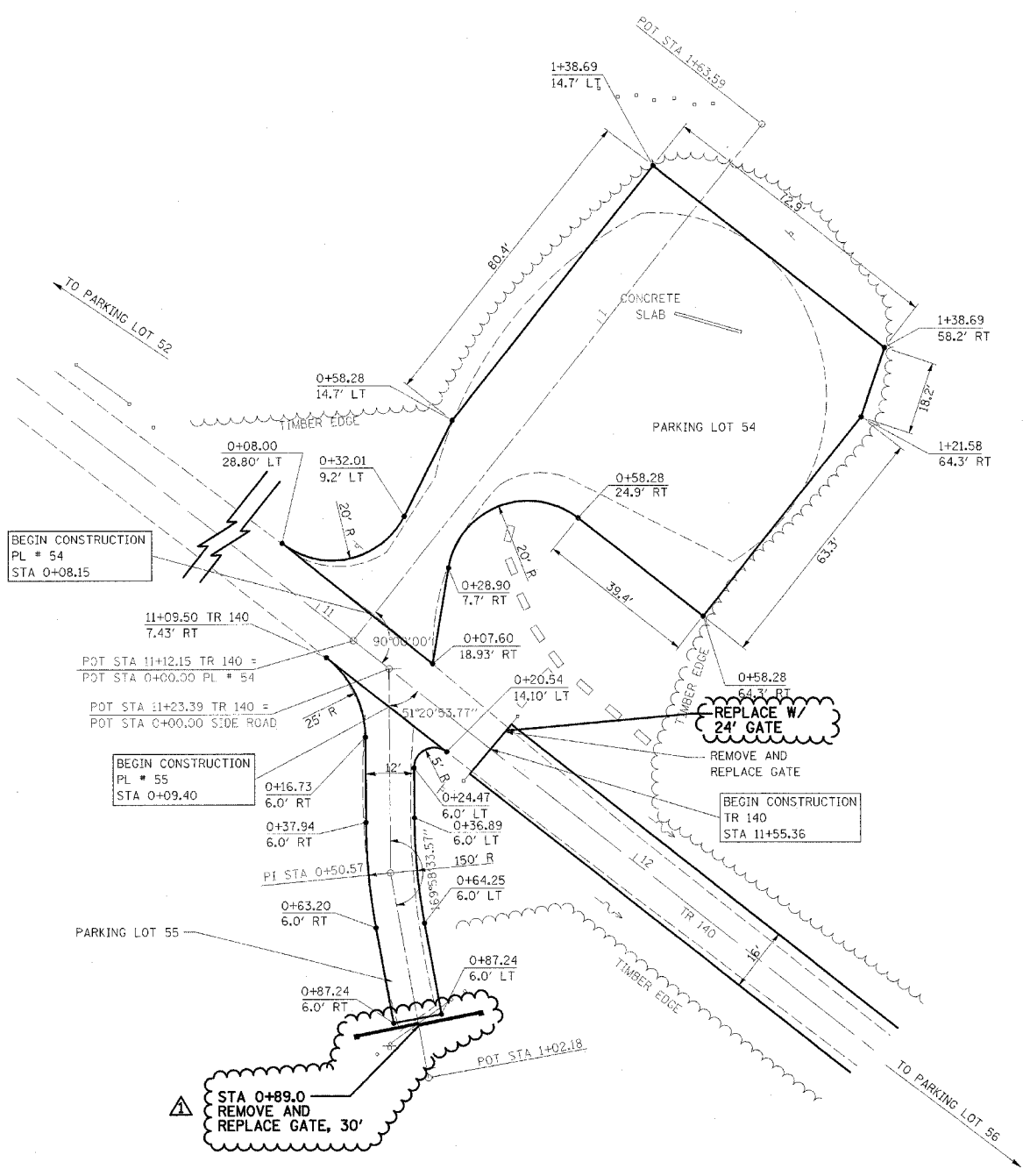


F.A. RTE.	SECTION	COUNTY	TOTAL SHEETS	SHEET NO.
*	**	***	310	105
STA. TO STA.			CONTRACT NO. 74155	
<ul style="list-style-type: none"> * PARK ROADS ** SFWA PARK ROADS 2003-1 *** MOULTRIE AND SHELBY 				

EXIST. CURVE CR142C5
 PI STA. = 25+77.43
 $\Delta = 39^\circ 23' 00''$ (RT)
 $D = 28^\circ 38' 52''$
 $R = 200.00'$
 $T = 71.58'$
 $L = 137.47'$
 $E = 12.42'$
 P.C. STA. = 25+05.85
 P.T. STA. = 26+43.33

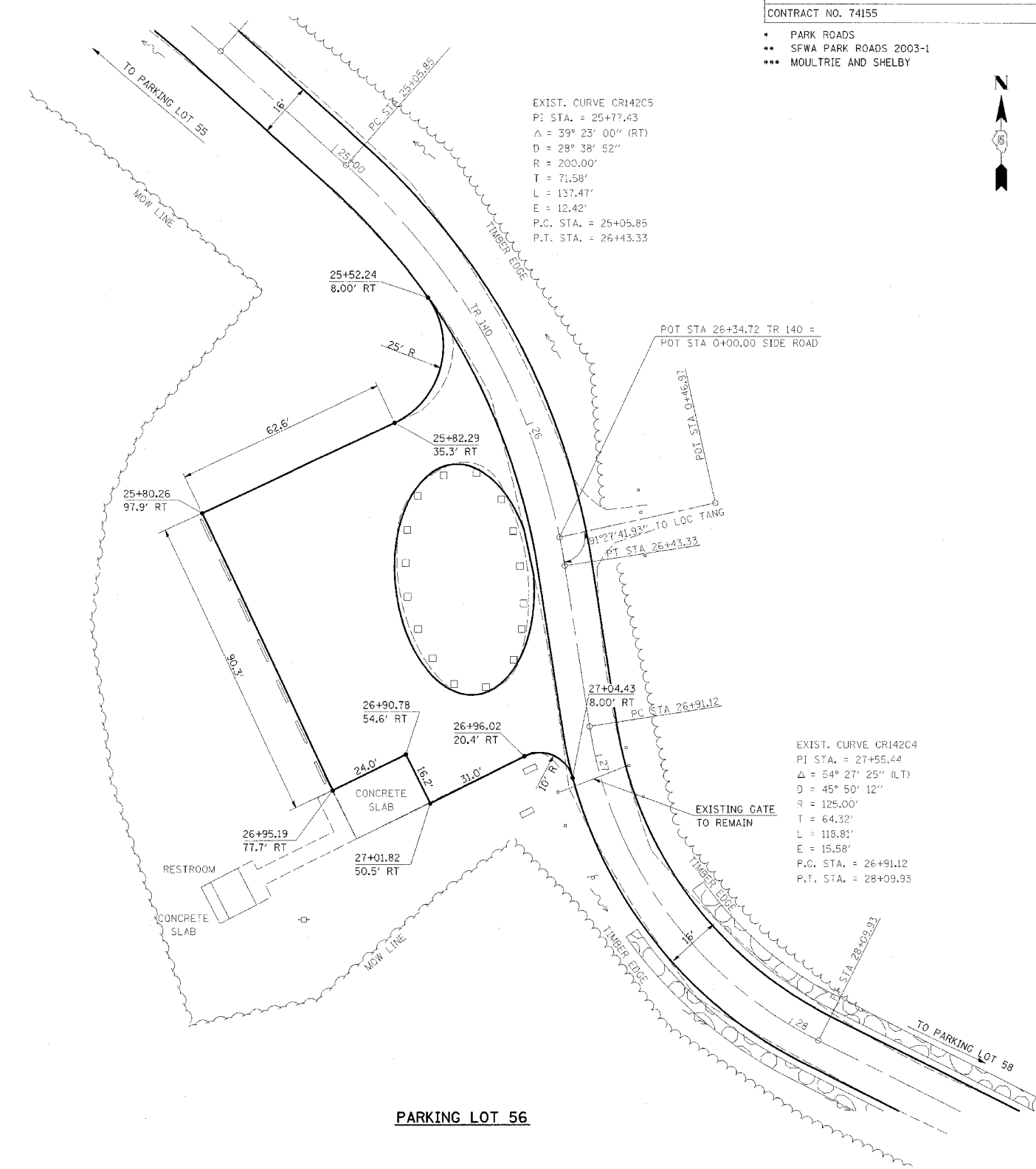
EXIST. CURVE CR142C4
 PI STA. = 27+55.44
 $\Delta = 54^\circ 27' 25''$ (LT)
 $D = 45^\circ 50' 12''$
 $R = 125.00'$
 $T = 64.32'$
 $L = 118.81'$
 $E = 15.58'$
 P.C. STA. = 26+91.12
 P.T. STA. = 28+09.93



NOTE: PARKING LOT 54
 BEGIN STA 0+08.15
 SURFACE IMPROVEMENTS,
 ADD 3" AGGREGATE

NOTE: PARKING LOT 55
 BEGIN STA 0+09.40
 SURFACE IMPROVEMENTS,
 ADD 3" AGGREGATE

PARKING LOTS 54 & 55



NOTE: PARKING LOT 56
 SURFACE IMPROVEMENTS,
 ADD 3" AGGREGATE



REVISIONS	
NAME	DATE
FGI	11/23/2005

ILLINOIS DEPARTMENT OF TRANSPORTATION
KASKASKIA FISH & WILDLIFE UNIT
PARKING LOT PLAN
PARKING LOT 54, 55 & 56

SCALE: _____
 DATE _____

DRAWN BY BANDY
 CHECKED BY STEUART

KASKASKIA FISH & WILDLIFE UNIT PARKING LOT PLAN, PARKING LOT 54, 55 & 56