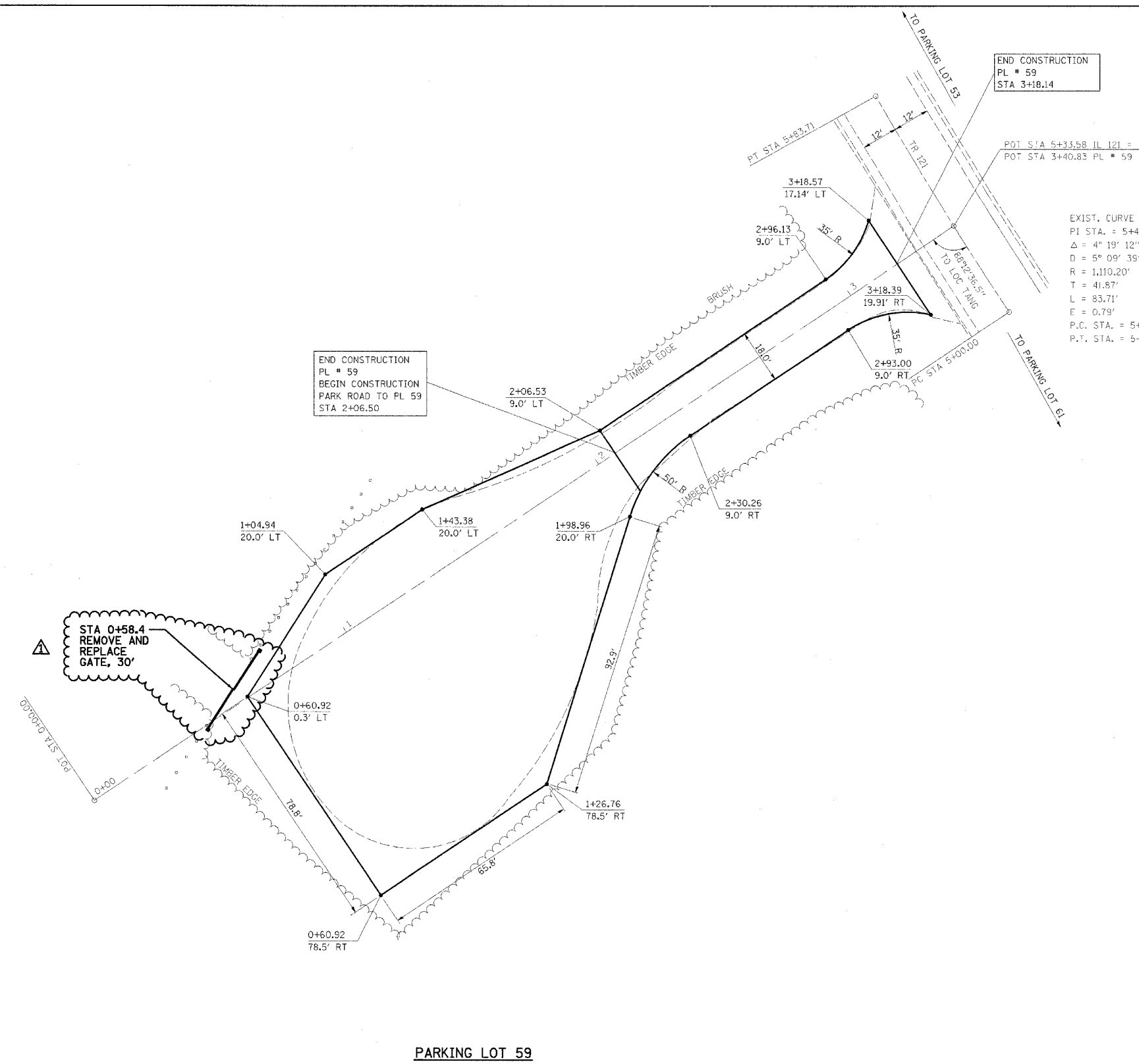


F.A. RTE.	SECTION	COUNTY	TOTAL SHEETS	SHEET NO.
*	**	***	310	108

STA. TO STA.

CONTRACT NO. 74155

- * PARK ROADS
- ** SFWA PARK ROADS 2003-1
- *** MOULTRIE AND SHELBY



PARKING LOT 59

NOTE:
 PARKING LOT 59
 END STA 2+06.50
 SURFACE IMPROVEMENTS,
 ADD 3" AGGREGATE



REVISIONS	
NAME	DATE
FGI	11/23/2005

ILLINOIS DEPARTMENT OF TRANSPORTATION
 KASKASKIA FISH & WILDLIFE UNIT
 PARKING LOT PLAN
 PARKING LOT 59

SCALE: _____
 DATE _____
 DRAWN BY BANDY
 CHECKED BY STEUART