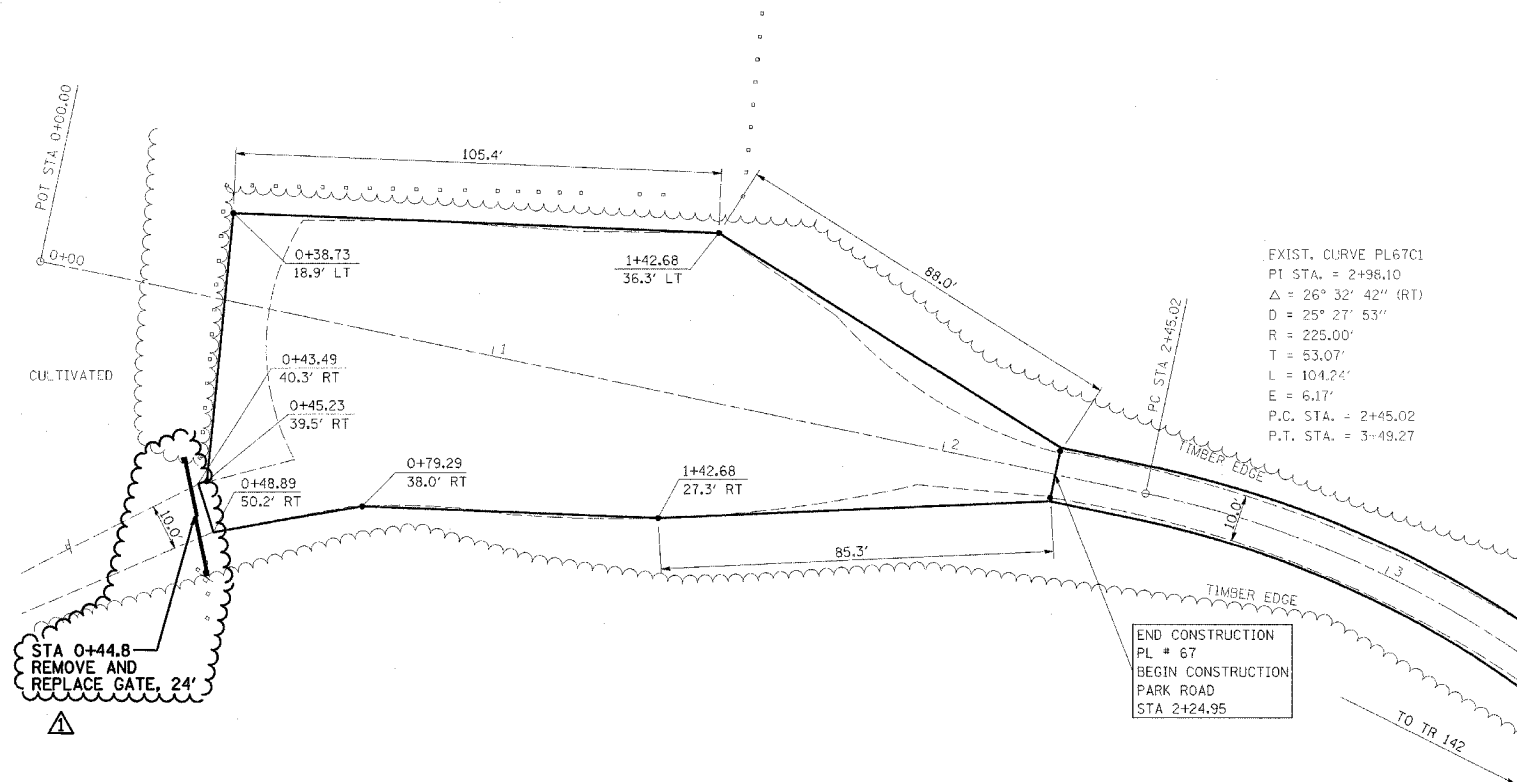
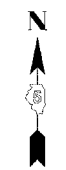


F.A. RTE.	SECTION	COUNTY	TOTAL SHEETS	SHEET NO.
*	**	***	310	113

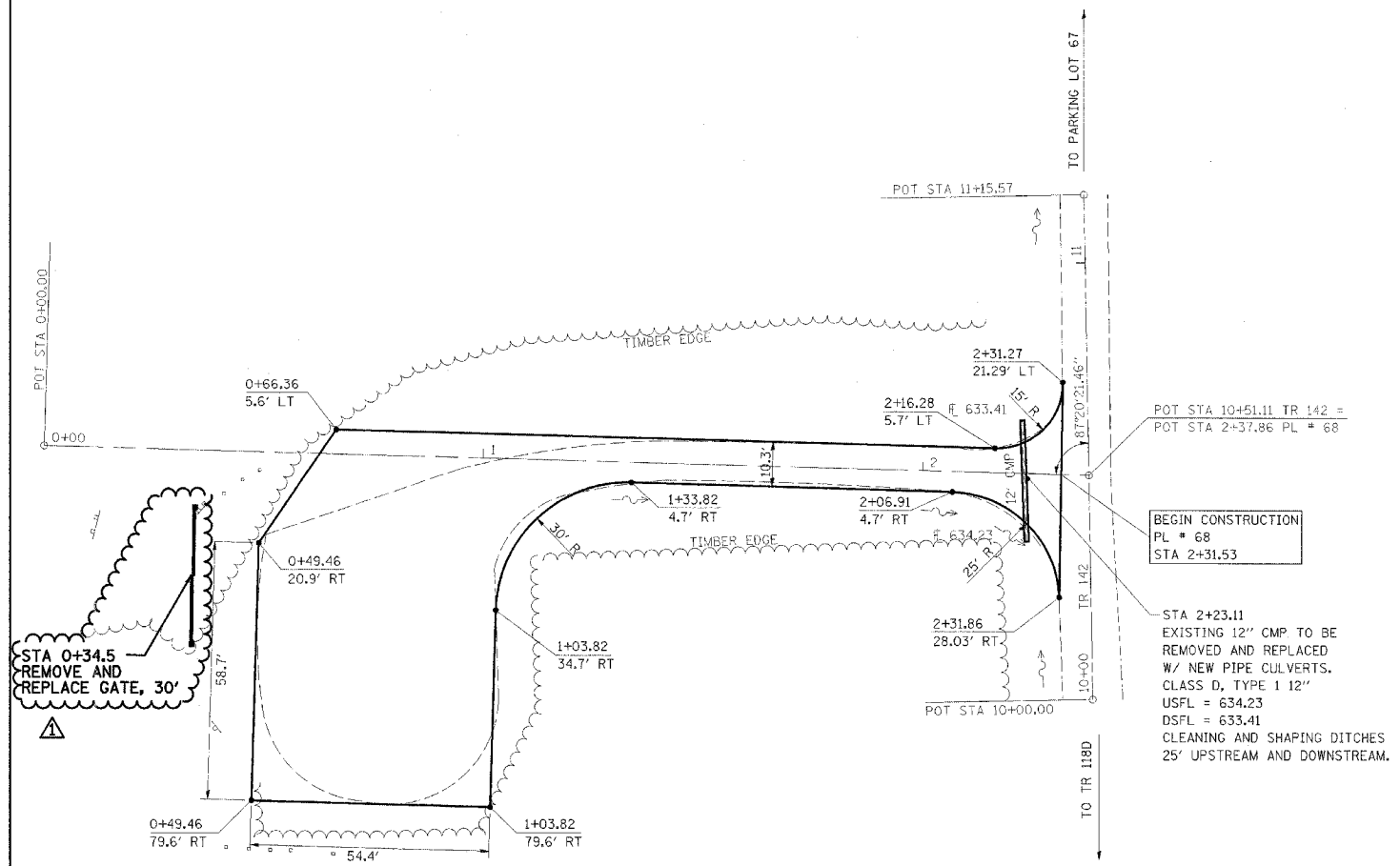
CONTRACT NO. 74155

- * PARK ROADS
- ** SFWA PARK ROADS 2003-1
- *** MOULTRIE AND SHELBY



PARKING LOT 67

NOTE:
 PARKING LOT 67
 END STA 2+24.95
 SURFACE IMPROVEMENTS,
 ADD 3" AGGREGATE



PARKING LOT 68

NOTE:
 PARKING LOT 68
 BEGIN STA 2+31.53
 SURFACE IMPROVEMENTS,
 ADD 3" AGGREGATE



REVISIONS	
NAME	DATE
FGI	11/23/2005

ILLINOIS DEPARTMENT OF TRANSPORTATION
 KASKASKIA FISH & WILDLIFE UNIT
 PARKING LOT PLAN
 PARKING LOT 67, & 68

SCALE: _____
 DATE _____
 DRAWN BY BANDY
 CHECKED BY STEUART