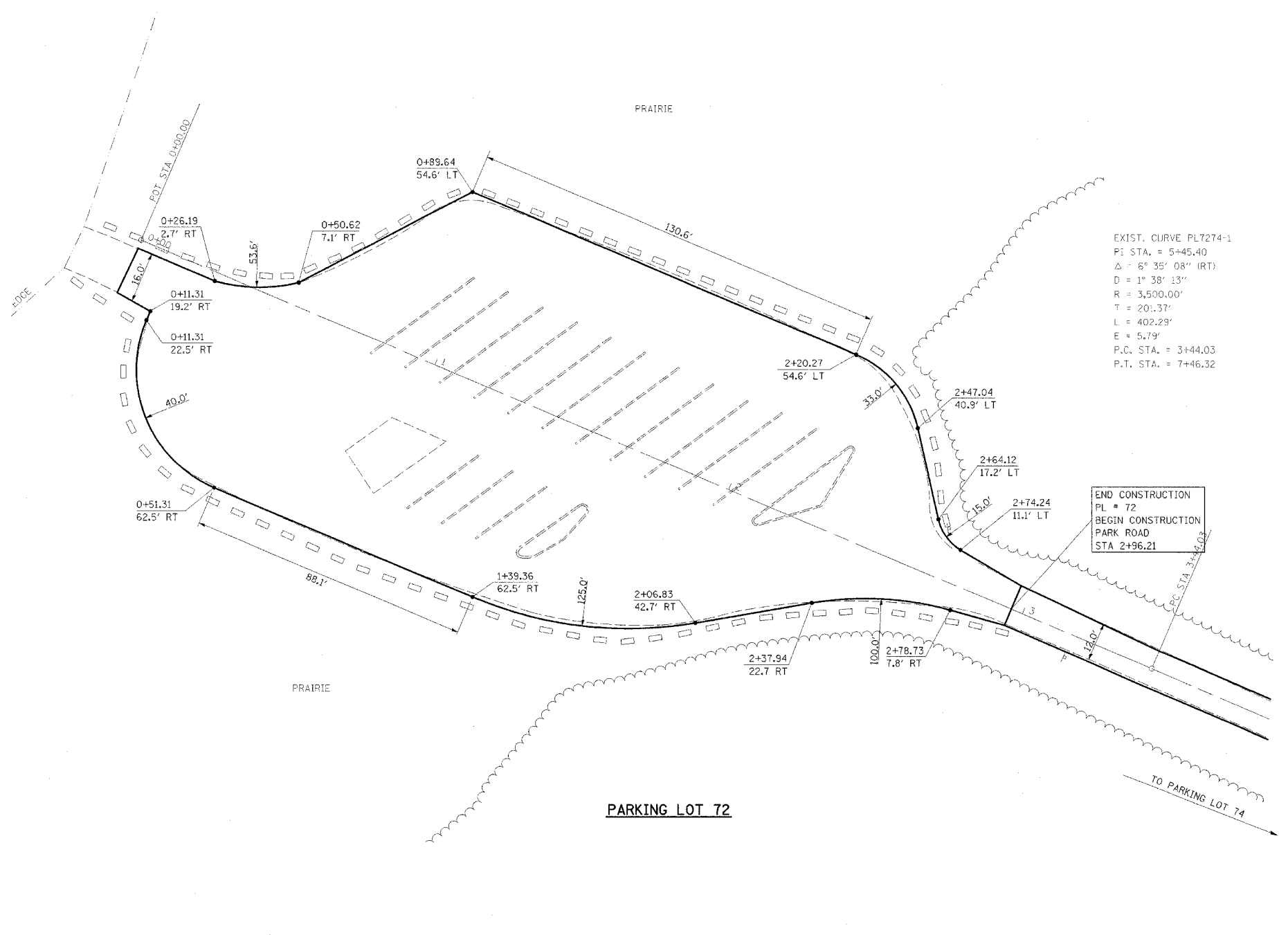
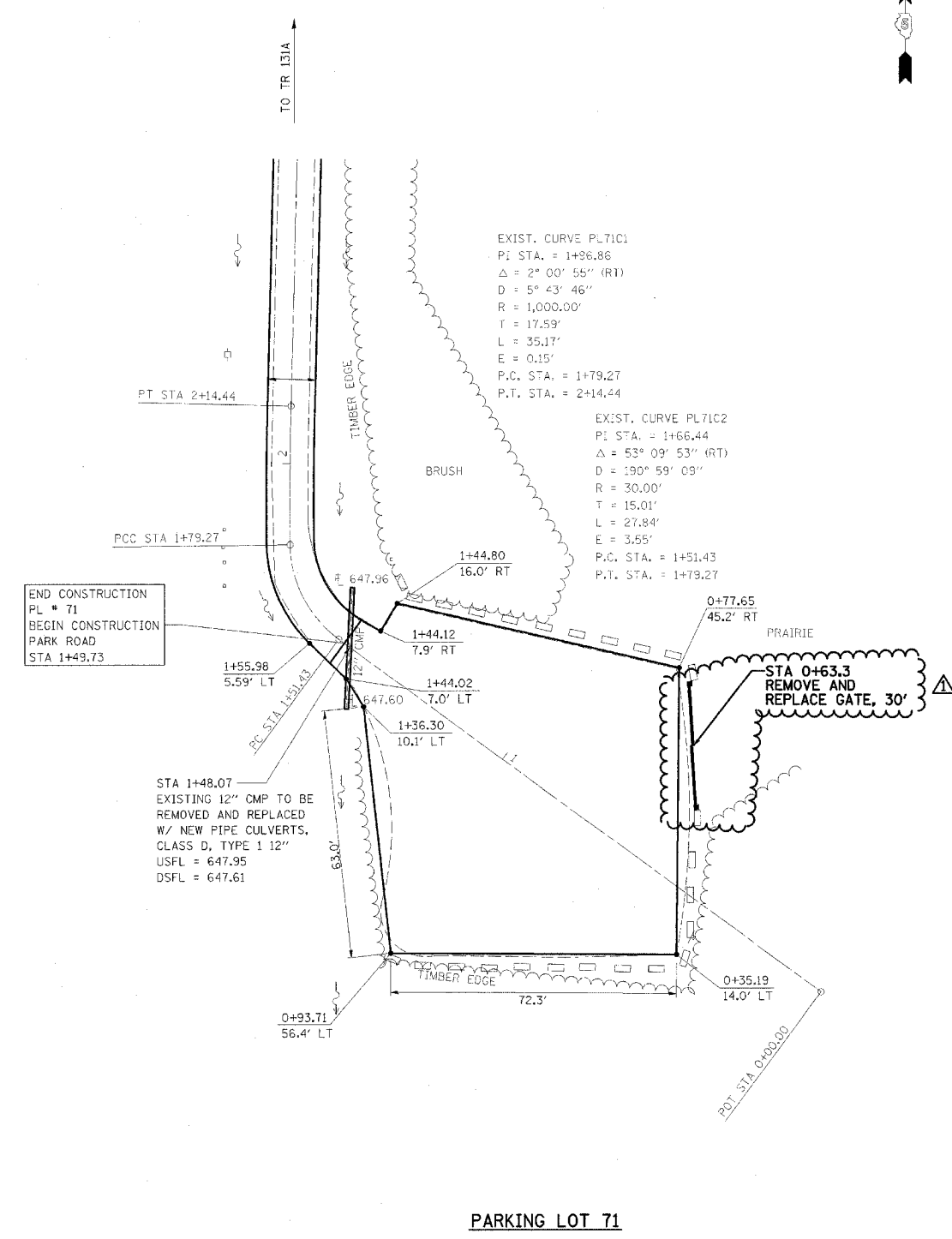


F.A. RTE.	SECTION	COUNTY	TOTAL SHEETS	SHEET NO.
*	**	***	310	115

STA. TO STA.

CONTRACT NO. 74155

- \* PARK ROADS
- \*\* SFWA PARK ROADS 2003-1
- \*\*\* MOULTRIE AND SHELBY



NOTE:  
 PARKING LOT 72  
 END STA 2+96.21  
 SCARIFY ROAD AND PARKING LOT, ADD 3" AGGREGATE AND ADD A-2 TREATMENT



REVISIONS	
NAME	DATE
FGI	11/23/2005

ILLINOIS DEPARTMENT OF TRANSPORTATION  
**KASKASKIA FISH & WILDLIFE UNIT**  
**PARKING LOT PLAN**  
**PARKING LOT 71 & 72**

SCALE: \_\_\_\_\_  
 DATE \_\_\_\_\_

DRAWN BY BANDY  
 CHECKED BY STEUART