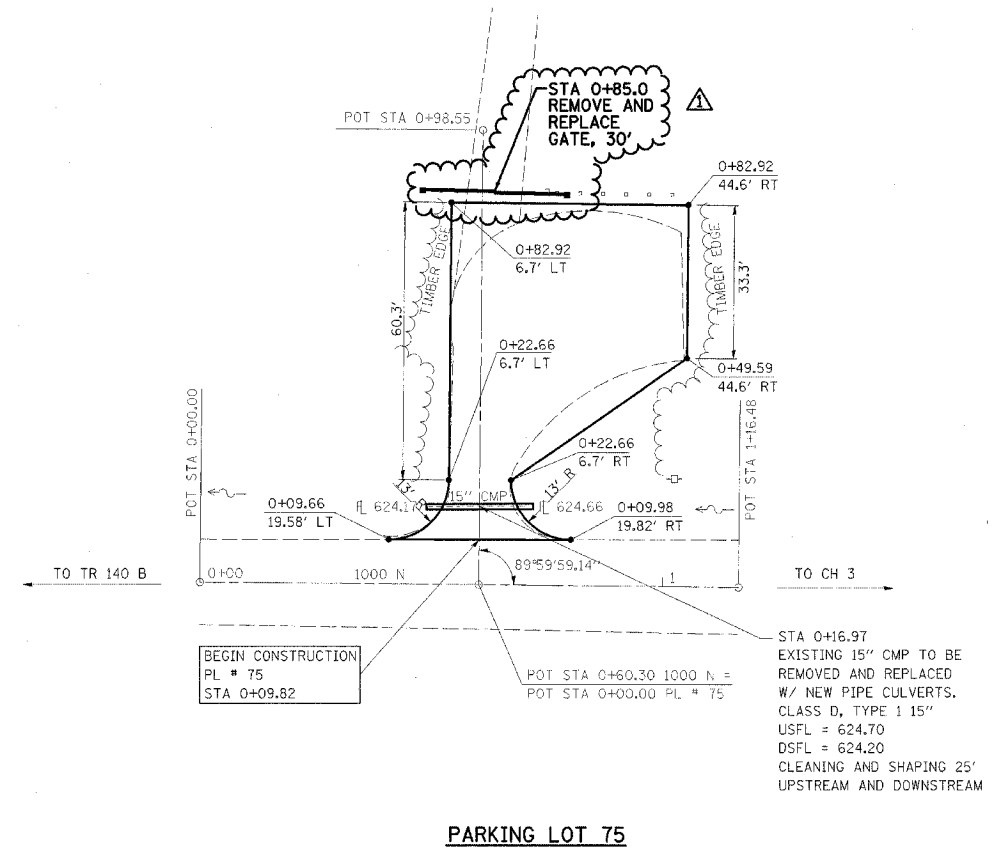
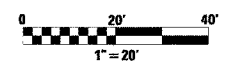


F.A. RTE.	SECTION	COUNTY	TOTAL SHEETS	SHEET NO.
*	**	***	310	117
STA. TO STA.				
CONTRACT NO. 74155				
<ul style="list-style-type: none"> * PARK ROADS ** SFWA PARK ROADS 2003-1 *** MOULTRIE AND SHELBY 				



NOTE:
 PARKING LOT 75
 BEGIN STA 0+09+82
 SURFACE IMPROVEMENTS,
 ADD 3" AGGREGATE



REVISIONS	
NAME	DATE
FGI	11/23/2005

ILLINOIS DEPARTMENT OF TRANSPORTATION
KASKASKIA FISH & WILDLIFE UNIT
PARKING LOT PLAN
PARKING LOT 75

SCALE: _____ DRAWN BY BANDY
 DATE _____ CHECKED BY STEUART