

F.A. RTE.	SECTION	COUNTY	TOTAL SHEETS	SHEET NO.
*	**	***	310	133

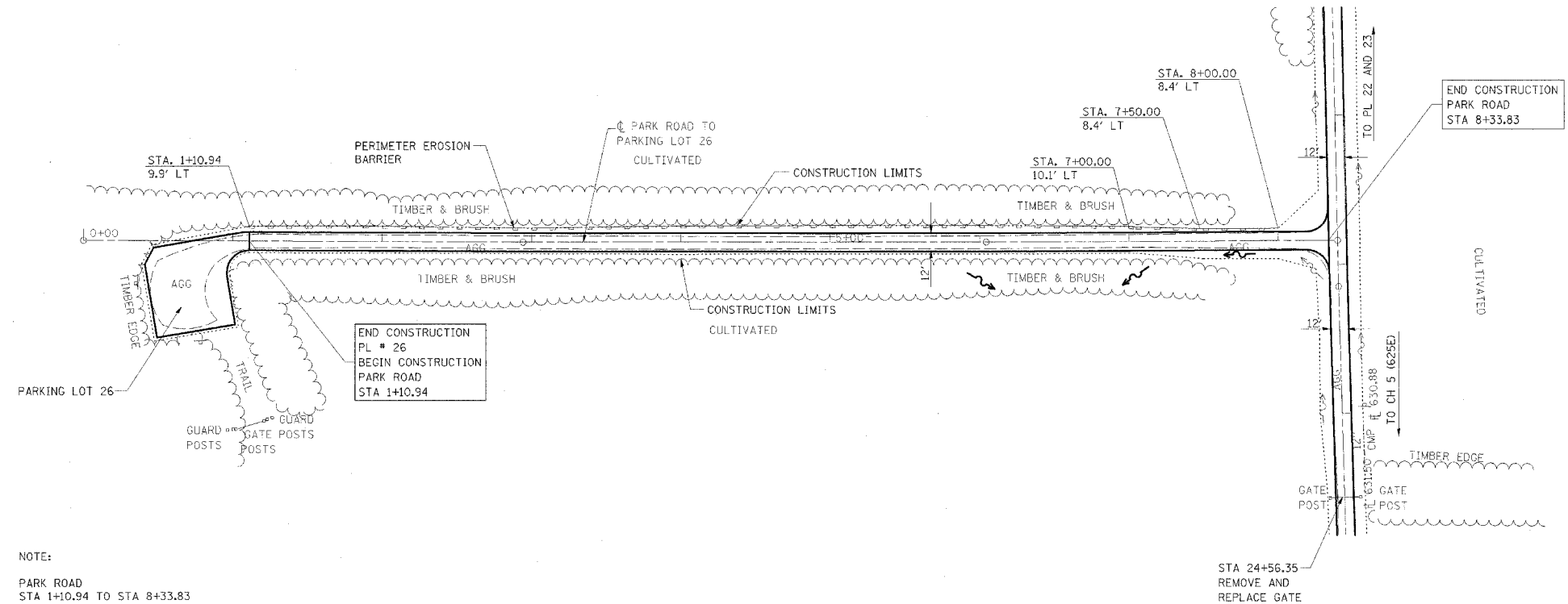
CONTRACT NO. 74155

- * PARK ROADS
- ** SFWA PARK ROADS 2003-1
- *** MOULTRIE AND SHELBY

DATE	BY

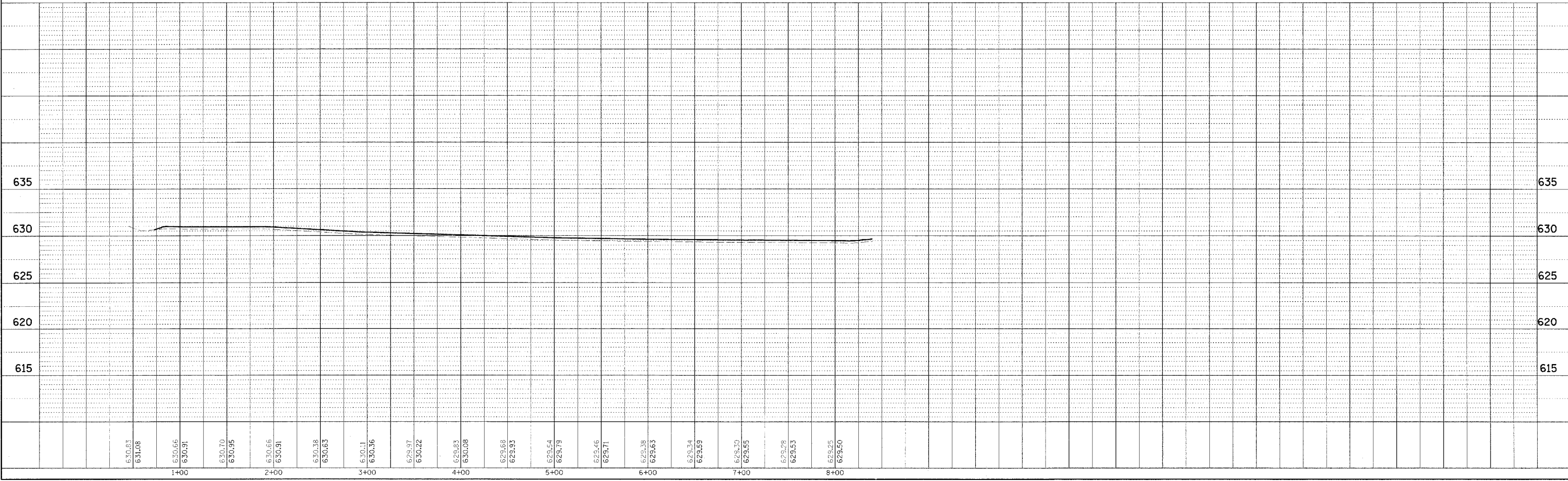
DATE	BY

DATE	BY



NOTE:
 PARK ROAD
 STA 1+10.94 TO STA 8+33.83
 SURFACE IMPROVEMENTS,
 ADD 3" AGGREGATE

REVISIONS TO PARK ROADS AND PARKING LOTS SHOWN ON PREVIOUS PLAN SHEETS THAT DO NOT IMPACT EROSION CONTROL ARE NOT BALLOONED OR NOTED AS REVISIONS TO ELIMINATE CLUTTER AND CROWDING ON THE EROSION CONTROL SHEETS



WEST OKAW FISH & WILDLIFE UNIT EROSION CONTROL PLAN AND PROFILE, PARK ROAD TO PARKING LOT 26