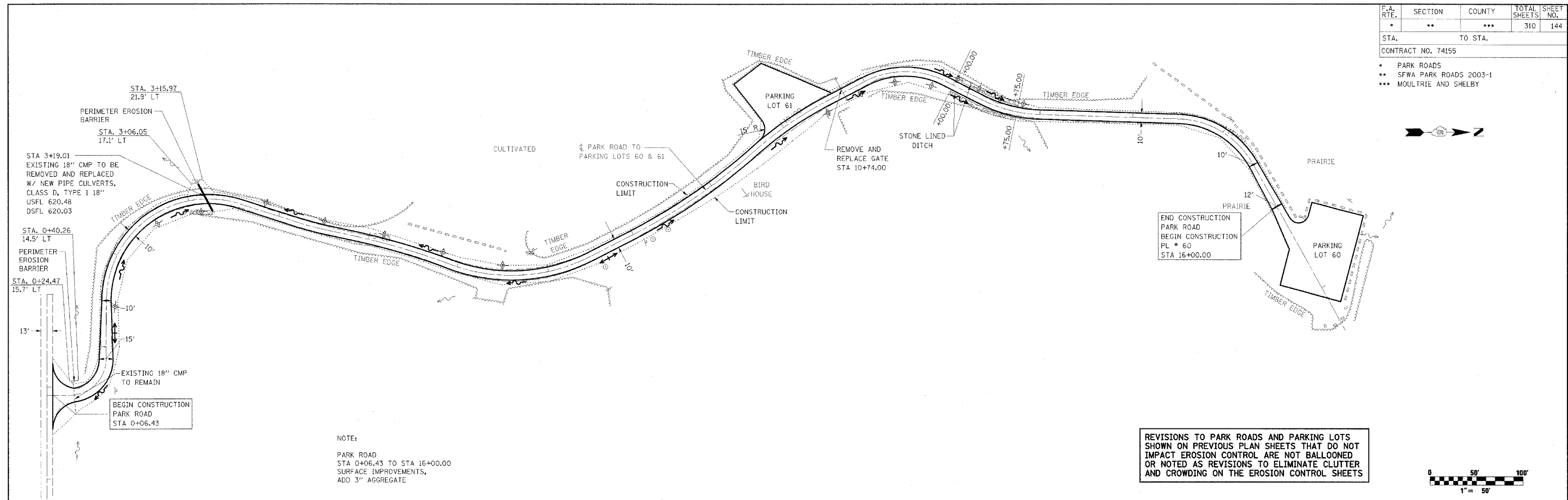


F.A. RTE.	SECTION	COUNTY	TOTAL SHEETS	SHEET NO.
*	**	***	310	144
STA. TO STA.				

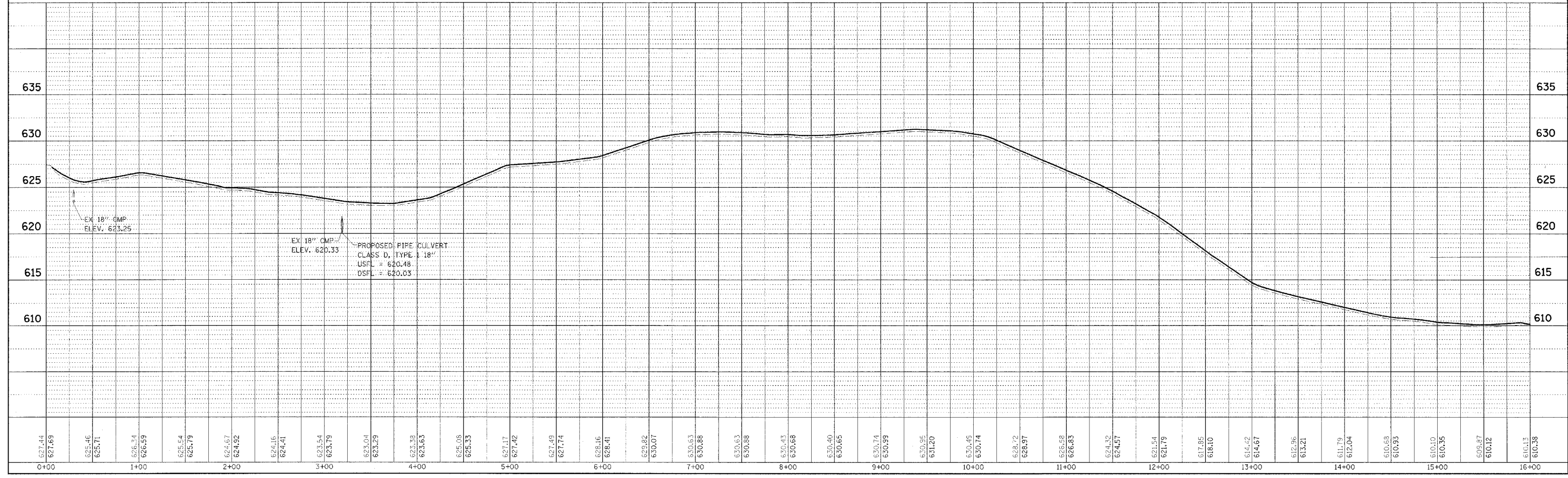
CONTRACT NO. 74155

- PARK ROADS
- SFWA PARK ROADS 2003-1
- MOULTRIE AND SHELBY



NOTE:
 PARK ROAD
 STA 0+06.43 TO STA 16+00.00
 SURFACE IMPROVEMENTS,
 ADD 3\"/>

REVISIONS TO PARK ROADS AND PARKING LOTS SHOWN ON PREVIOUS PLAN SHEETS THAT DO NOT IMPACT EROSION CONTROL ARE NOT BALLOONED OR NOTED AS REVISIONS TO ELIMINATE CLUTTER AND CROWDING ON THE EROSION CONTROL SHEETS



KASKASKIA FISH & WILDLIFE UNIT EROSION CONTROL PLAN AND PROFILE, PARK ROAD TO PARKING LOTS 60 & 61

DATE	BY

DATE	BY