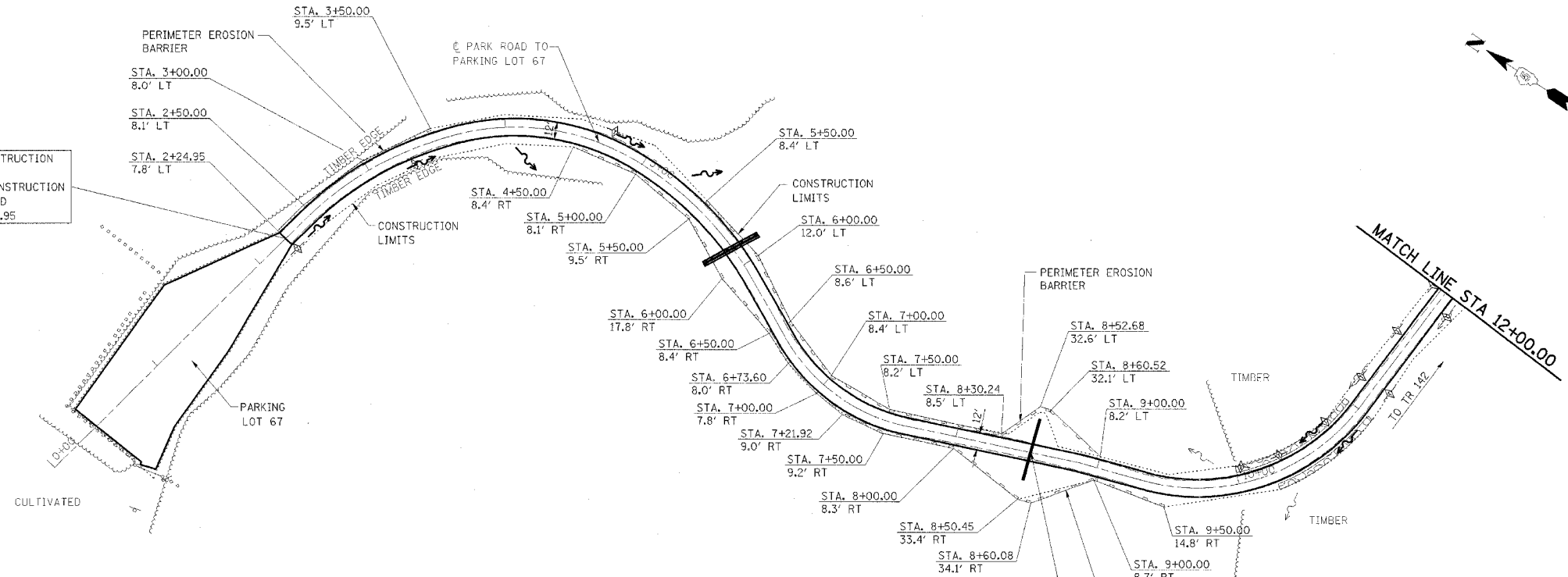


F.A. RTE.	SECTION	COUNTY	TOTAL SHEETS	SHEET NO.
*	**	***	310	148
STA. TO STA.				
CONTRACT NO. 74155				
* PARK ROADS				
** SFWA PARK ROADS 2003-1				
*** MOULTRIE AND SHELBY				

DATE	BY	REVISION

DATE	BY	REVISION

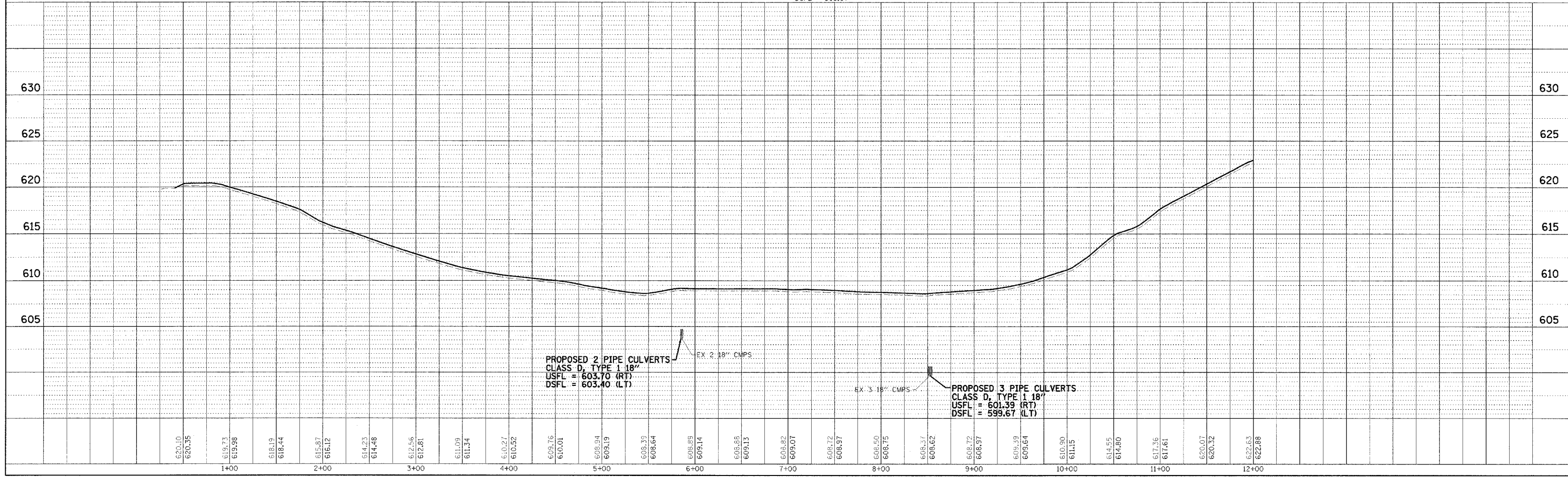
END CONSTRUCTION  
PL # 67  
BEGIN CONSTRUCTION  
PARK ROAD  
STA 2+24.95



NOTE:  
PARK ROAD  
STA 2+24.95 TO STA 34+50.00  
SURFACE IMPROVEMENTS,  
ADD 3" AGGREGATE

STA 8+52.68  
EXISTING 12" CMP TO BE  
REMOVED AND REPLACED  
W/ NEW PIPE CULVERTS,  
CLASS D, TYPE 1 12"  
USFL = 601.39  
DSFL = 599.67

REVISIONS TO PARK ROADS AND PARKING LOTS  
SHOWN ON PREVIOUS PLAN SHEETS THAT DO NOT  
IMPACT EROSION CONTROL ARE NOT BALLOONED  
OR NOTED AS REVISIONS TO ELIMINATE CLUTTER  
AND CROWDING ON THE EROSION CONTROL SHEETS



PROPOSED 2 PIPE CULVERTS  
CLASS D, TYPE 1 18"  
USFL = 603.70 (RT)  
DSFL = 603.40 (LT)

PROPOSED 3 PIPE CULVERTS  
CLASS D, TYPE 1 18"  
USFL = 601.39 (RT)  
DSFL = 599.67 (LT)