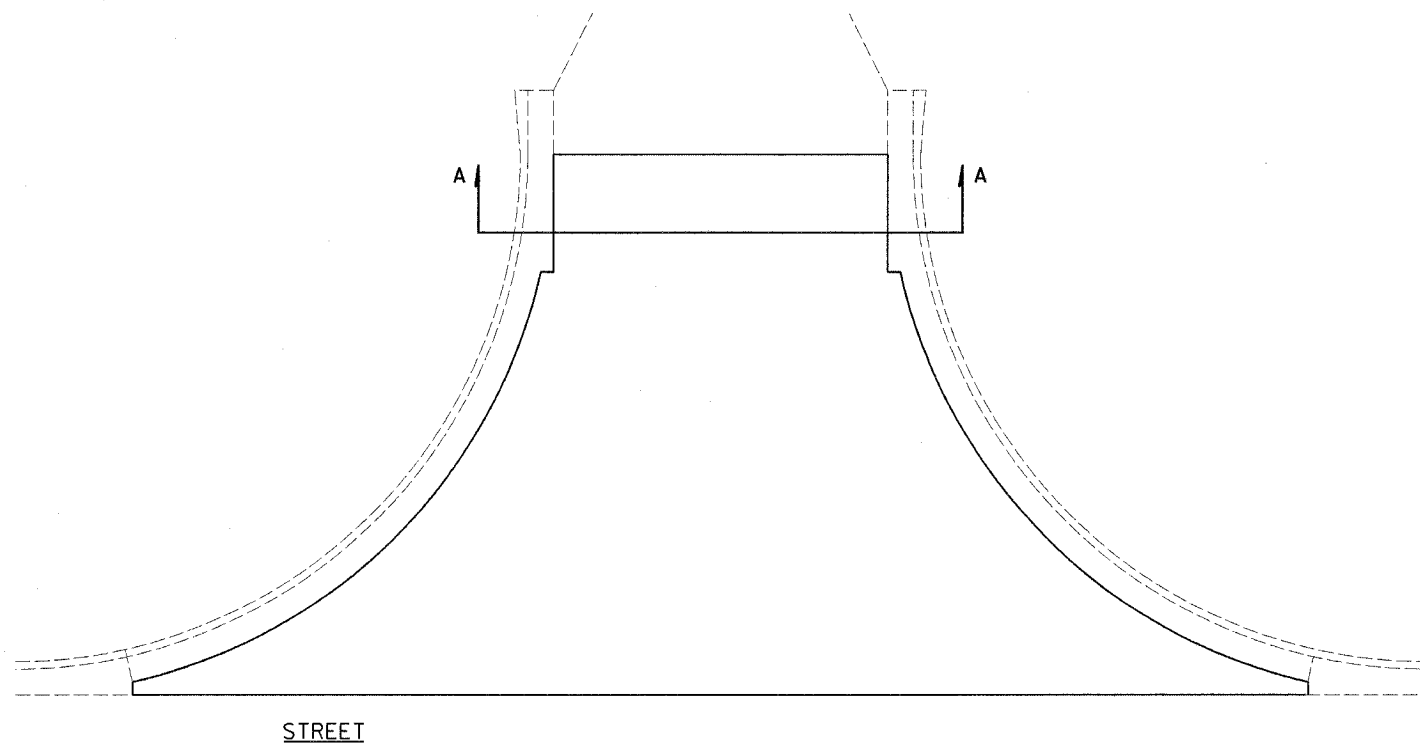


5/19/2006
 c:\projects\74161\d\03406pa.dgn

CONTRACT NO. 74161

F.A.P. RTE.	SECTION	COUNTY	TOTAL SHEETS	SHEET NO.
116	*	RICHLAND	43	9
STA.		TO STA.		
FED. ROAD DIST. NO.		ILLINOIS	FED. AID PROJECT	
* (123Z, 124Z)TS-2,RS-3				

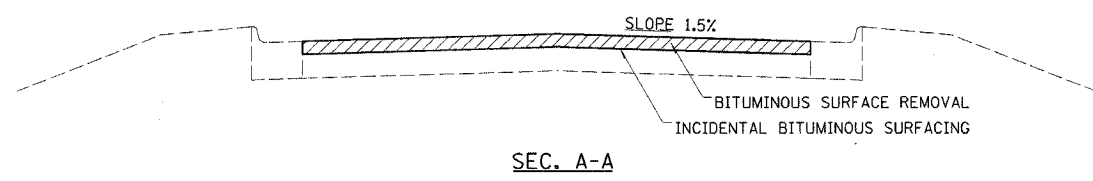
TYPICAL ENTRANCE SCHEDULE



SIDE	STATION	TYPE	INCIDENTAL BITUMINOUS SURFACING	BITUMINOUS SURFACE REMOVAL, 1/2"
			TON	SQ YD
LT	995+14	PRA	9.49	112.94
LT	1002+53	PRA	9.77	116.37
RT	1002+53	PRA	8.06	95.96
LT	1006+16	PRA	19.64	222.88
RT	1005+89	PRA	18.72	233.87
LT	1008+76	PRA	6.91	82.31
RT	1009+30	PRA	18.23	216.99
RT	1012+68	PRA	147.07	1750.89
LT	1012+70	PRA	149.17	1775.80
LT	1015+72	PRA	10.77	128.16
RT	1015+72	PRA	9.53	113.42
LT	7+09	PRA	5.34	63.53
RT	7+09	PRA	8.45	100.55
RT	11+09	PRA	8.23	97.95
RT	14+95	PRA	9.36	111.42
TOTAL			439	5223.0

FE - FIELD ENTRANCE PRA - PUBLIC ROAD APPROACH
 PE - PRIVATE ENTRANCE MBT - MAILBOX TURNOUT
 CE - COMMERCIAL ENTRANCE

*BITUMINOUS MATERIALS AND AGGREGATE (PRIME COAT) FOR ENTRANCES AND PUBLIC ROAD APPROACHES SHALL BE CONSIDERED INCIDENTAL TO INCIDENTAL BITUMINOUS SURFACING AS NOTED IN THE SPECIAL PROVISIONS



REVISIONS	
NAME	DATE

ILLINOIS DEPARTMENT OF TRANSPORTATION

ENTRANCE SCHEDULE

SCALE: VERT. DRAWN BY
 HORIZ. CHECKED BY
 DATE

PLOT DATE = 5/19/2006
 FILE NAME = #FILE#
 PLOT SCALE = #SCALE#
 USER NAME = #USER#