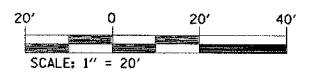
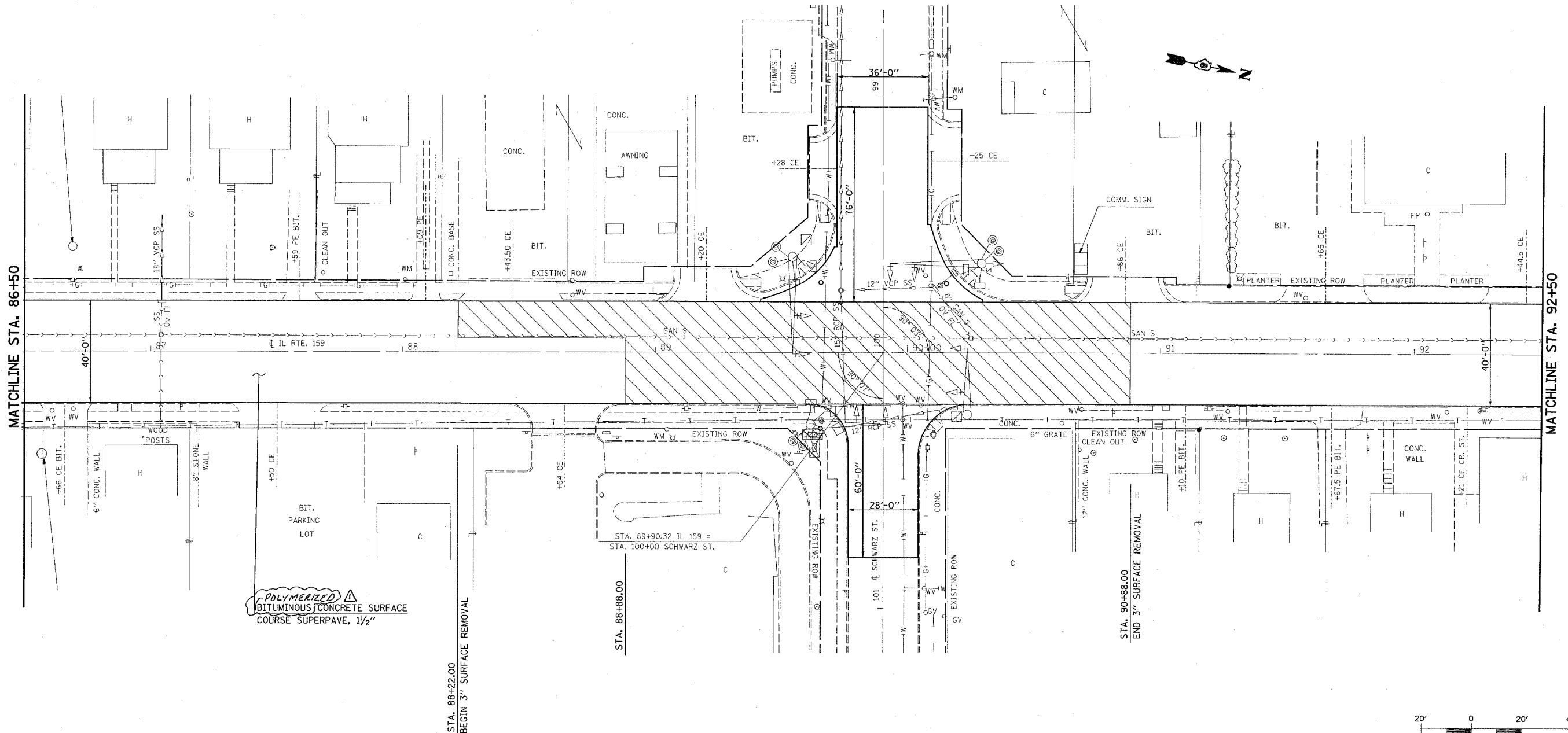


F.A.P. RTE.	SECTION	COUNTY	TOTAL SHEETS	SHEET NO.
600	34RS-2	ST. CLAIR	39	19
STA. 86+50.00		TO STA. 92+50.00		
FED. ROAD DIST. NO. 1		ILLINOIS FED. AID PROJECT		



MATCHLINE STA. 86+50

MATCHLINE STA. 92+50

**POLYMERIZED**  
 BITUMINOUS/CONCRETE SURFACE  
 COURSE SUPERPAVE, 1/2"

STA. 88+22.00  
 BEGIN 3" SURFACE REMOVAL

STA. 88+88.00

STA. 90+88.00  
 END 3" SURFACE REMOVAL

STA. 89+90.32 IL 159 =  
 STA. 100+00 SCHWARZ ST.

Rev. 7-18-06

PLOT DATE = 5/15/2006  
 FILE NAME = c:\projects\ad7100\plan\plan09.psdgn  
 PLOT SCALE = 28.0000 / 1"  
 USER NAME = gmdamerjg

DATE

ILLINOIS DEPARTMENT OF TRANSPORTATION  
**PLAN VIEW**  
 FAP ROUTE 600  
 SECTION 34RS-2  
 MADISON COUNTY

SCALE: VERT.  
 HORIZ.  
 DATE

DRAWN BY  
 CHECKED BY