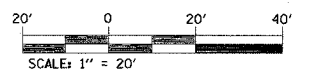
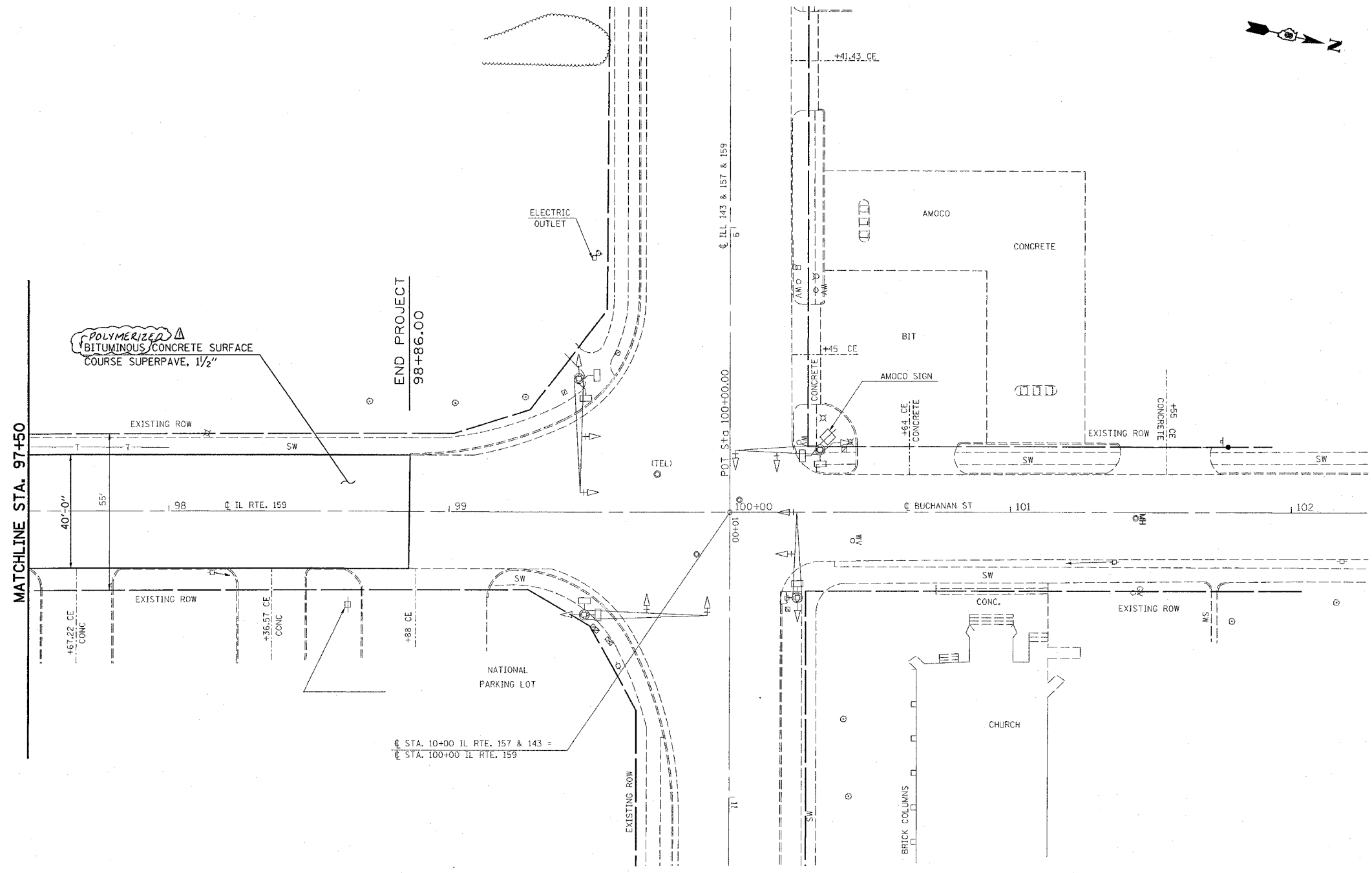


F.A.P. RTE.	SECTION	COUNTY	TOTAL SHEETS	SHEET NO.
600	34RS-2	ST. CLAIR	39	21
STA. 97+50.00		TO STA. 98+86.00		
FED. ROAD DIST. NO. 1		ILLINOIS		FED. AID PROJECT



PLOT DATE = 5/15/2006  
 PLOT SCALE = 20,000 / 1" =  
 USER NAME = dmselmanj

Rev. 7-18-06

ILLINOIS DEPARTMENT OF TRANSPORTATION	
<b>PLAN VIEW</b>	
FAP ROUTE 600 SECTION 34RS-2 MADISON COUNTY	
SCALE: VERT. HORIZ. DATE	DRAWN BY CHECKED BY