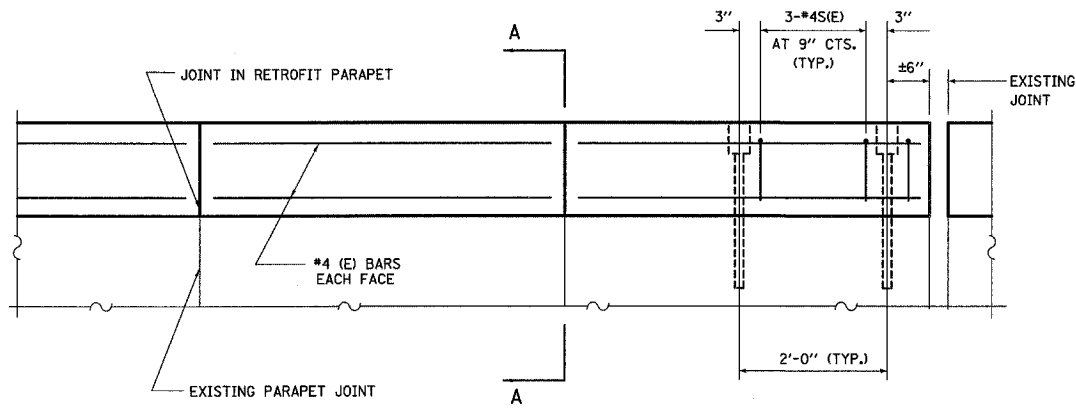


STATE OF ILLINOIS  
DEPARTMENT OF TRANSPORTATION

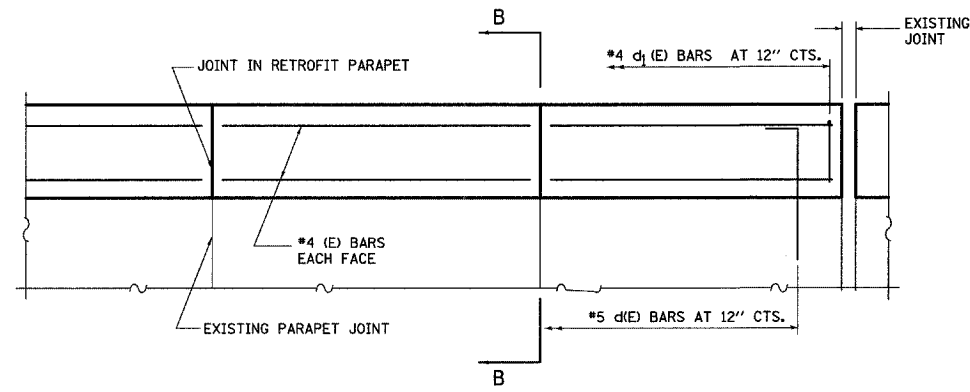
ROUTE NO.	SECTION	COUNTY	TOTAL SHEETS	SHEET NO.
-	-	-	63	41
FED. ROAD DIST. NO. 7		ILLINOIS	FED. AID PROJECT	

SHEET NO. 1  
39 SHEETS

Contract #76899



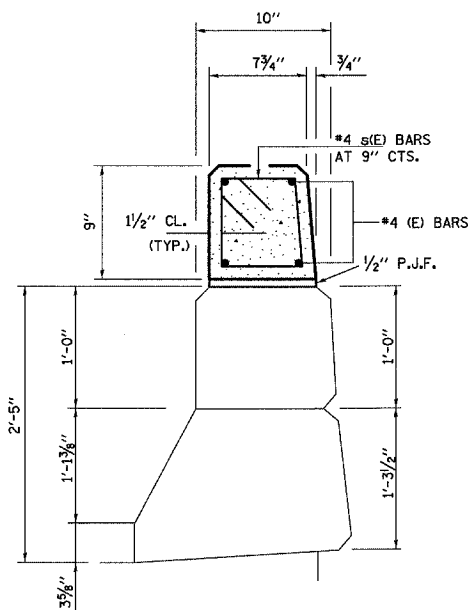
**INSIDE ELEVATION OF PARAPET**  
(PRECAST ALTERNATE)  
(SPANS 1-3 AND AT EAST APPROACH SLAB.)



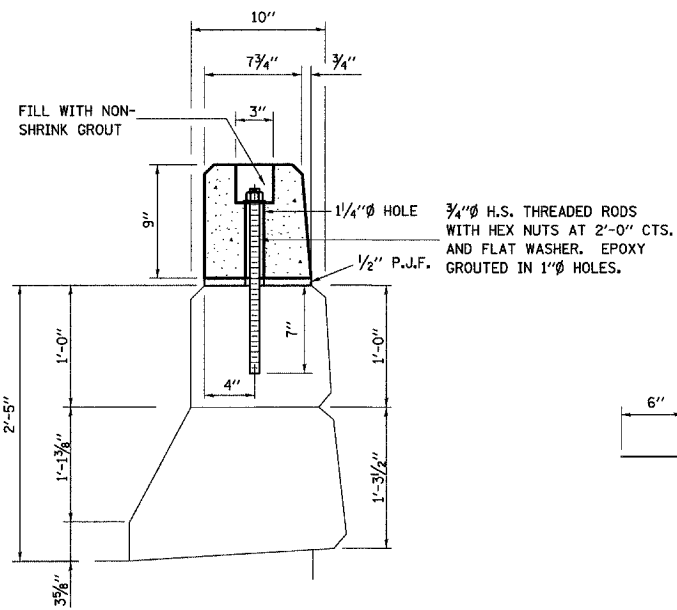
**INSIDE ELEVATION OF PARAPET**  
(CAST-IN-PLACE ALTERNATE)  
(Spans 1-3 and at East Approach Slab.)

**GENERAL NOTES**

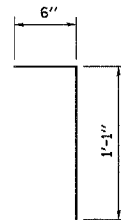
- CLASS SI CONCRETE SHALL BE USED THROUGHOUT FOR CAST-IN-PLACE OPTION.
- CLASS PC CONCRETE SHALL BE USED THROUGHOUT FOR PRECAST OPTION.
- ALL EXPOSED EDGES SHALL BE CHAMFERED 3/4".
- CLASS SI OR PC CONCRETE; REINFORCEMENT BARS, EPOXY COATED; THREADED ANCHOR RODS; 1/2" P.J.F. AND ALL OTHER ACCESSORIES NEEDED FOR INSTALLATION AND ERECTION SHALL BE INCLUDED IN THE COST OF "RETROFIT CONCRETE PARAPET".
- THE CONTRACTOR SHALL USE THE CAPSULE OR THE ADHESIVE CARTRIDGE TYPE ANCHOR RODS THAT HAVE BEEN PREVIOUSLY TESTED AND GIVEN A PRIOR APPROVAL BY THE DEPARTMENT. THE CONTRACTOR SHALL INSTALL THESE ANCHOR RODS IN PRE-DRILLED HOLES ACCORDING TO THE MANUFACTURER'S RECOMMENDATIONS AND PROCEDURES.
- THE CAPSULE OR THE ADHESIVE CARTRIDGE SHALL BE SEALED GLASS CAPSULE OR A SEALED GLASS ADHESIVE CARTRIDGE CONTAINING PREMEASURED AMOUNT OF ADHESIVE CHEMICAL. THE THREADED ROD STUD WITH NUT & WASHERS SHALL CONFORM TO ASTM A307.
- HOLES FOR THE DOWEL RODS SHALL MISS EXISTING PARAPET JOINTS.
- THE PRECAST SECTIONS MAY BE CAST IN UNITS OF 3', 5', 7',..... ETC. LENGTH AS DESIRED. WHERE THEY OVERLAP THE JOINTS IN THE PARAPET, THE PRECAST UNITS SHALL BE SAW CUT TO LINE UP WITH THE JOINTS IN THE PARAPET. THE SAWCUT FACES OF THE UNITS SHALL BE GIVEN A COAT OF BOILED LINSEED OIL MIXTURE (PROTECTIVE COAT). THE COST OF THE PROTECTIVE COAT SHALL BE INCLUDED IN THE COST FOR "RETROFIT CONCRETE PARAPET".
- THE CONCRETE PARAPET RETROFIT WILL BE MEASURED FOR PAYMENT IN FOOT (FT) ALONG THE TOP OF PARAPET END TO END. THIS WORK WILL BE PAID FOR AT THE CONTRACT UNIT PRICE PER FOOT (FT) OF "RETROFIT CONCRETE PARAPET".
- EPOXY GROUT (#E) BARS IN 3/8" Ø X 6" (MIN.) DRILLED HOLES. THE GROUT AND THE METHOD OF APPLICATION SHALL BE APPROVED BY THE DEPARTMENT. (SEE SECTION 584 OF THE STANDARD SPECIFICATIONS.) COST INCLUDED WITH RETROFIT CONCRETE PARAPET.
- RETROFIT CONCRETE PARAPET SHALL BE USED ON THE EXISTING PARAPETS IN SPANS 1-3 AND AT THE EXISTING PARAPETS AT THE EAST APPROACH SLAB.



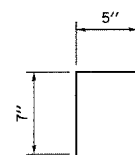
**PRECAST ALTERNATE**  
(SHOWING REINFORCEMENT)



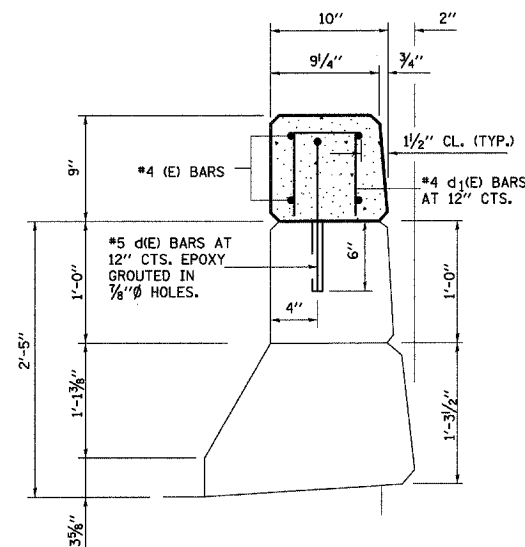
**PRECAST ALTERNATE**  
(SHOWING ATTACHMENT)



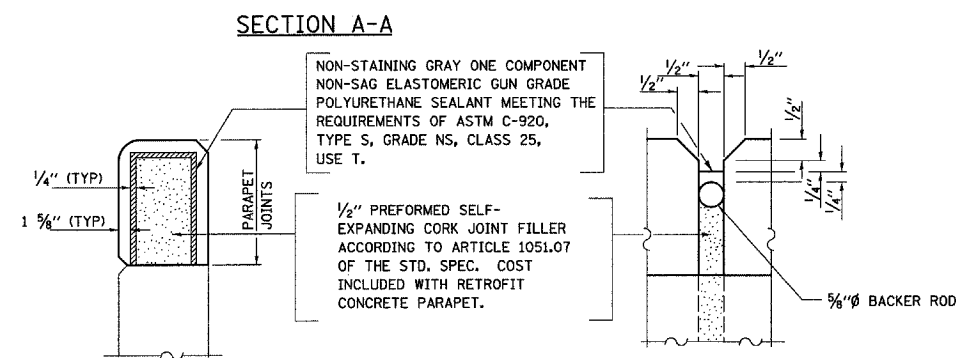
BAR d(E)



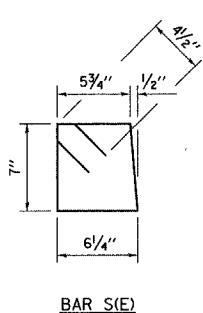
BAR d1(E)



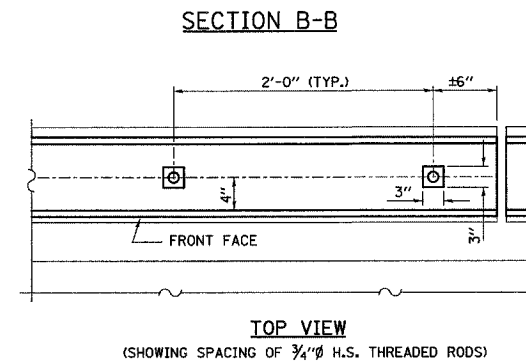
**CAST-IN-PLACE ALTERNATE**



**JOINT DETAIL**



BAR s(E)



**TOP VIEW**  
(SHOWING SPACING OF 3/4" H.S. THREADED RODS)

**BILL OF MATERIAL**

PAY ITEM	UNIT	QUANTITY
RETROFIT CONCRETE PARAPET	FOOT	450

**SUPERSTRUCTURE DETAILS**  
**OLD U.S. ROUTE 50 OVER**  
**SHOAL CREEK**  
**F.A.S. ROUTE 1780 - SECTION 24-BR-**  
**CLINTON COUNTY**  
**STA. 102+51.47**  
**STRUCTURE NO. 014-0062**

PLOT DATE = 05/15/2006  
FILE NAME = h:\p\25004\technical\production\structural\sn\_014-0062\final.plans\0062-17-sadst15.dgn  
PLOT SCALE = 0:1.0000' / 1" / IN.  
USER NAME = #USER#