

Contract #76899

STATE OF ILLINOIS
DEPARTMENT OF TRANSPORTATION

| Joint Size | "C" at 50°F | "D" at 50°F |
|------------|-------------|-------------|
| 2" | 2" | 1 1/2" Min. |
| 2 1/2" | 2 1/2" | 1 3/4" Min. |
| 4" | 3" | 2 1/2" Min. |

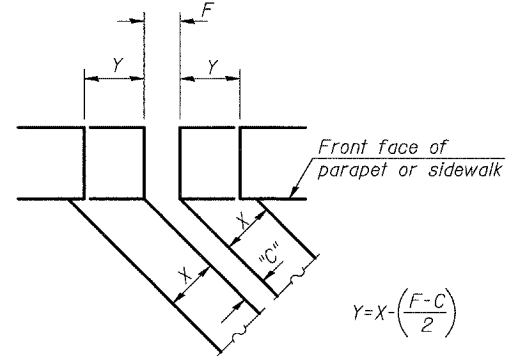
INSTALLATION NOTES

- Install continuous seal in roadway, parapet, curb, and sidewalk.
- Install anchor blocks as indicated.

Note A:
Maximum spacing of anchor bolts shall be 12" centers.

SKEW LIMITATIONS

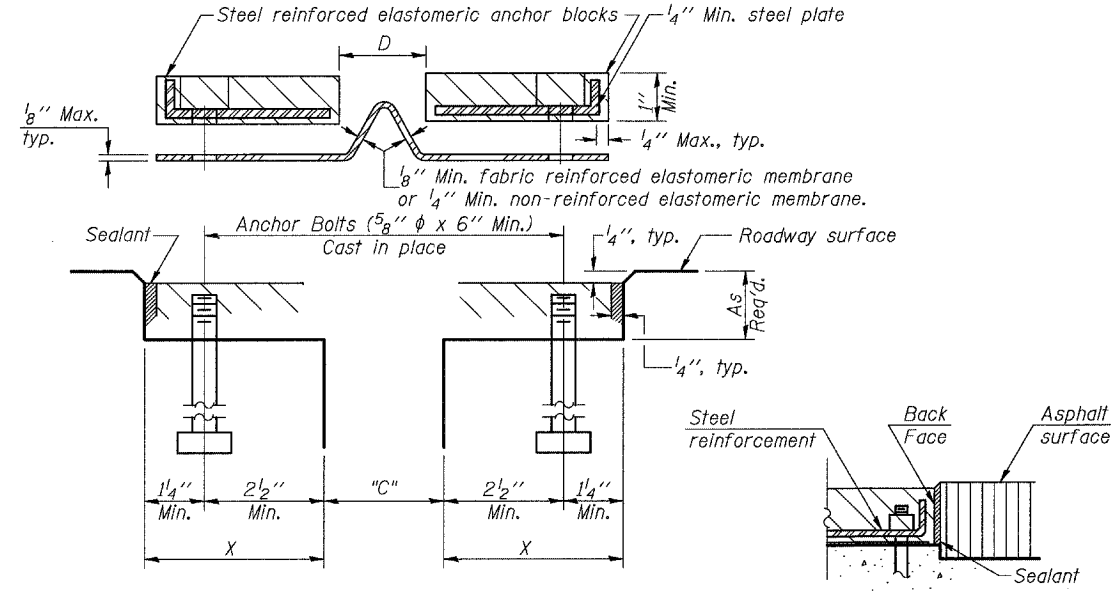
The details of the anchor blocks and the elastomeric membrane in the parapet, as shown, are for up to 50° skews. For skews greater than 50°, the anchor blocks and the elastomeric membrane, installed according to dimension "D", might require modifications to insure a minimum clearance of 1 1/2" from centerline of anchor studs to edge of parapet opening. The anchor blocks and the elastomeric membrane shall also be installed to the top of the parapet with the anchor studs spaced at ±12" cts.



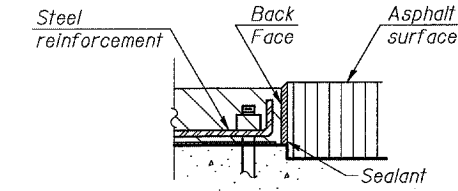
$$Y = X - \left(\frac{F - C}{2} \right)$$

For dimension "F" see sheet 18 of 37.

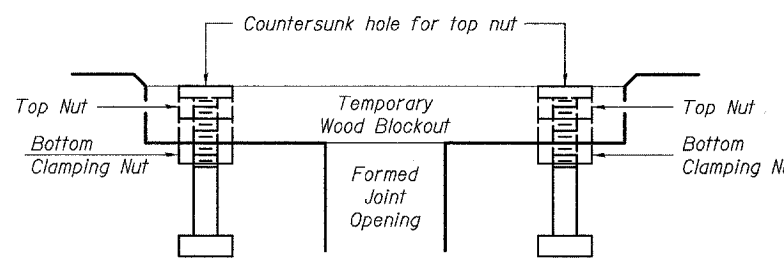
FORMING BLOCKOUT SKETCH



CROSS SECTION



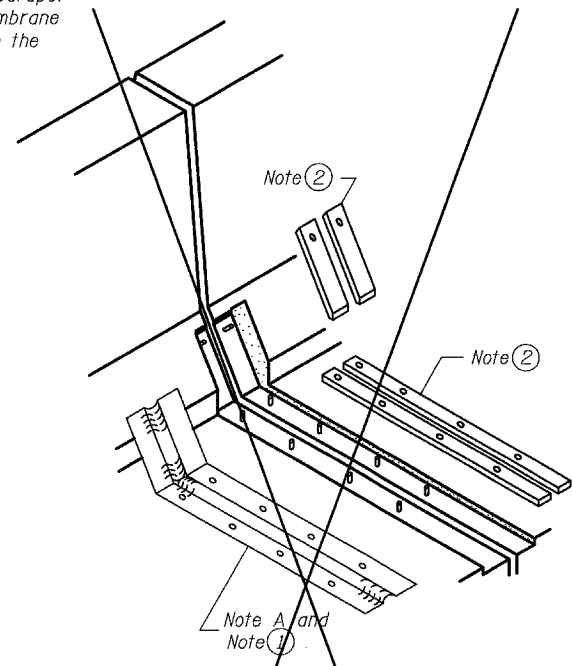
ANCHOR BLOCK WITH ASPHALT SURFACE



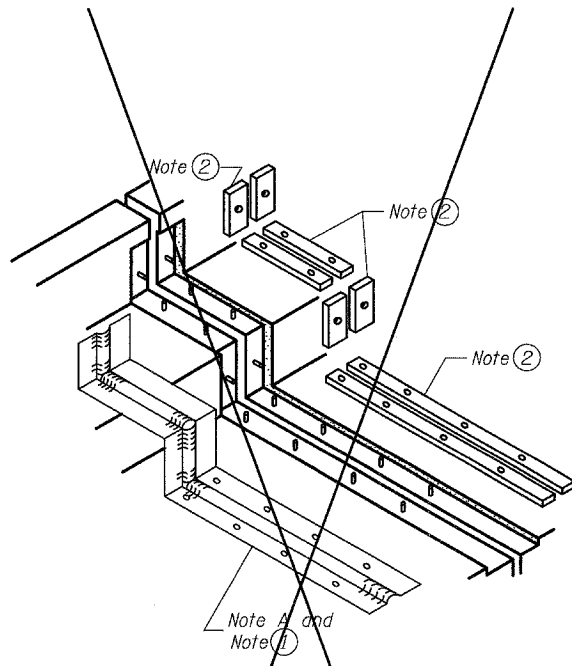
Note:
Stud needs to be threaded lower to allow for use of clamping nut.

Anchor studs should be stainless

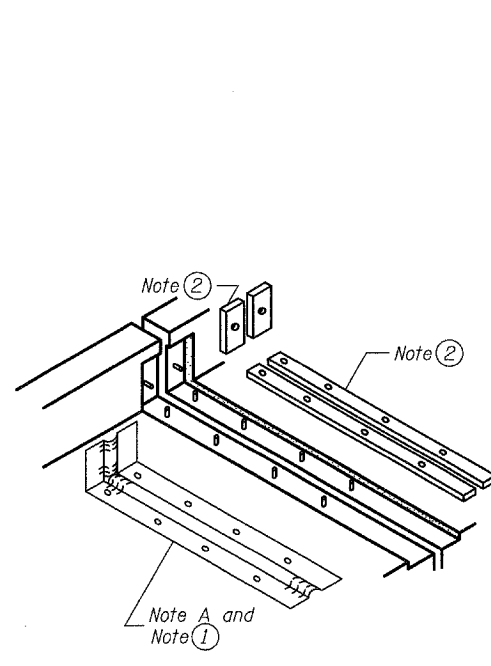
RECOMMENDED BLOCKOUT DETAIL



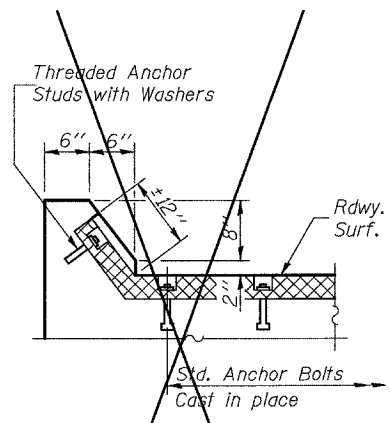
AT PARAPET



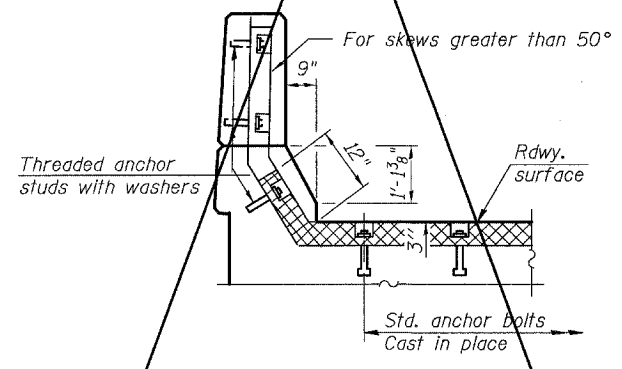
AT SIDEWALK OR MEDIAN



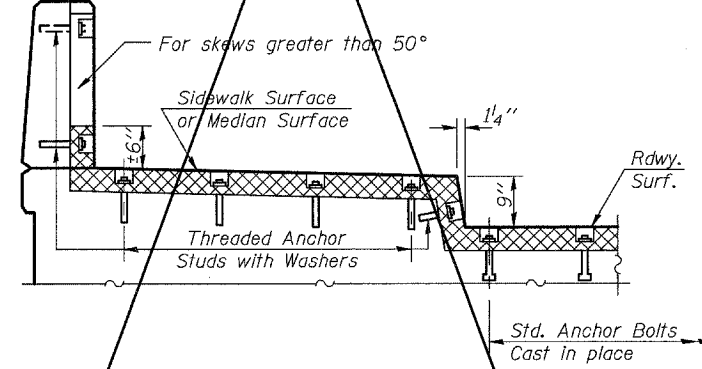
AT WALL



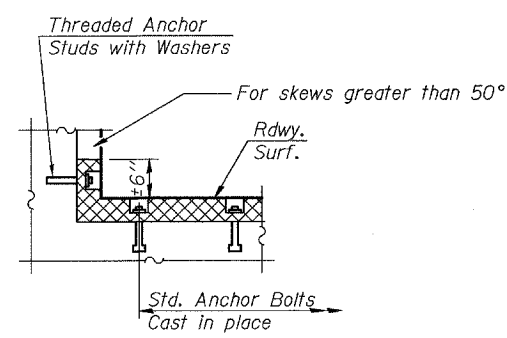
AT CURB



AT PARAPET



AT SIDEWALK OR MEDIAN TYPICAL END TREATMENTS



AT WALL

**CONTINUOUS SEAL TYPE
NEOPRENE EXPANSION JOINTS
OLD U.S. ROUTE 50 OVER
SHOAL CREEK
F.A.S. ROUTE 1780 - SECTION 24-BR-
CLINTON COUNTY
STA. 102+51.47
STRUCTURE NO. 014-0062**

PLOT DATE = 05/15/2006
FILE NAME = h:\p\25004\technical\production\structural\sn_014-0062\final\plans\0052-19-neopexj\sheet1.dgn
PLOT SCALE = 0:1,000:0
USER NAME = USER\$